



# briefing notes - road safety issues

## Waimakariri District

New Zealand Transport Agency has prepared this road safety issues report. It is based on reported crash data and trends for the 2004–2008 period.

The intent of the report is to highlight the key road safety issues and be a resource to identify possible ways to reduce the number of road deaths and injuries in Waimakariri District.

In each new report one year's data is added to a five year block and the oldest dropped so it is unlikely that the core issues would change radically from report to report.

The issues chosen for this report are drawn from either the most common crash types, those that appear over-represented when Waimakariri District is compared to similar local bodies or those with high social cost (high numbers of fatal and serious crashes mainly).

We have included a brief overview of crashes in the district.

We encourage Waimakariri District to use its free access to the Ministry of Transport's Crash Analysis System (CAS) to delve deeper into the highlighted issues and other road safety issues in the district. Also the NZTA Christchurch Performance Information team is available to provide further information if required. All data and maps in this note are from CAS.

### Major road safety issues

#### Waimakariri District

Straight road - loss of control or head-on

Intersections

Young drivers

### 2008 road trauma

#### Casualties

#### Waimakariri District

Deaths	4
Serious casualties	17
Minor casualties	88

### Nationally

Speed

Alcohol

Failure to give way

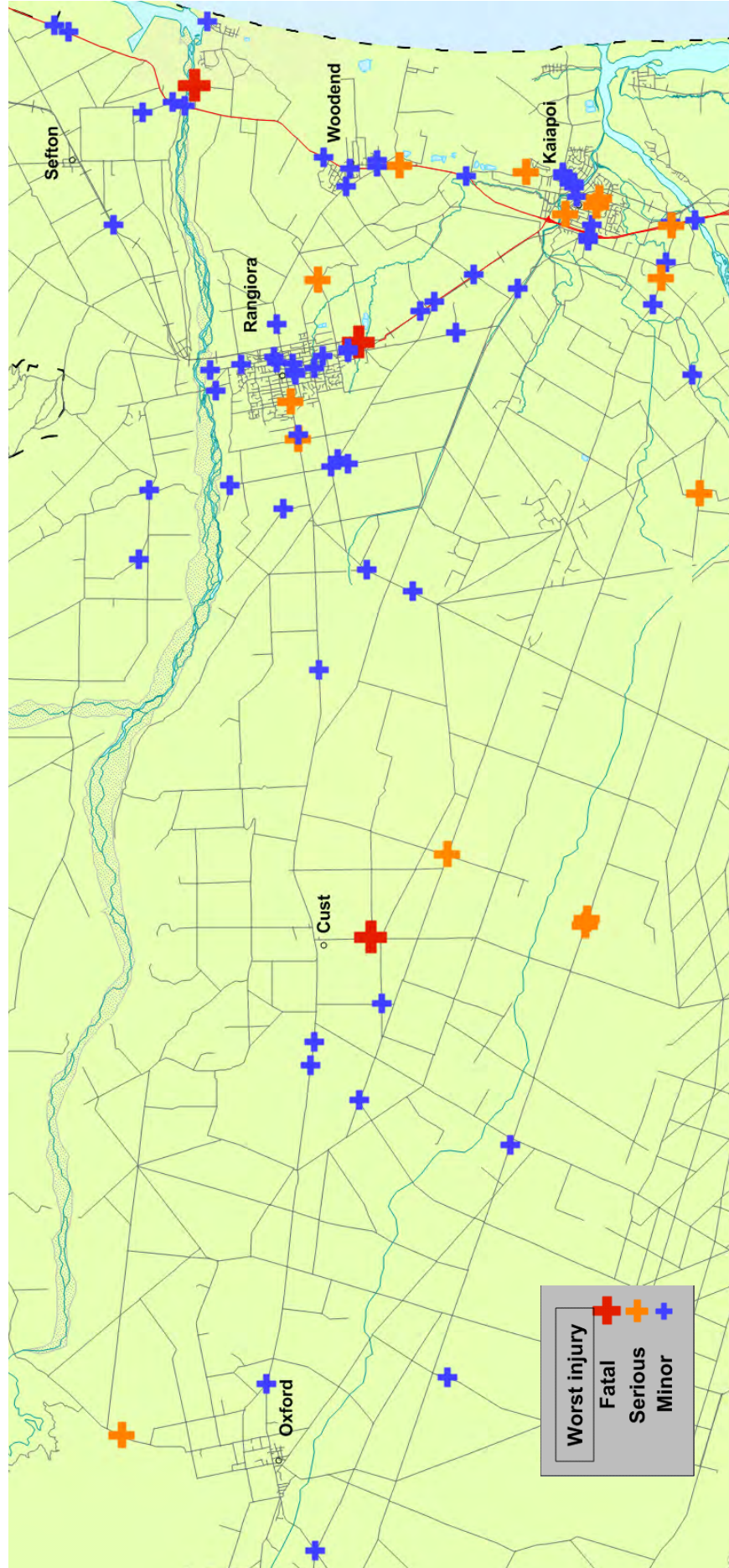
Restraints

### Crashes

#### Waimakariri District

Fatal crashes	3
Serious injury crashes	15
Minor injury crashes	63
Non-injury crashes	164

Fatal and injury crashes  
Waimakariri District  
2008



## Overview

In 2008 on local roads in Waimakariri District there were 67 injury crashes and 135 non-injury crashes. In addition there were 14 injury crashes and 29 non-injury crashes on State Highways both as reported by the New Zealand Police.

The table below shows the number of injuries resulting from the 81 injury crashes by rural or urban areas for local roads (rural is defined as an area with a speed limit of 80km/h or more).

### Casualties by urban / rural 2008

	Fatalities	Serious injuries	Minor injuries	Total
Rural	3	13	55	71
Urban	1	4	33	38
Total	4	17	88	109

In 2008, 65 percent of casualties in the district were in rural areas. For fatal and serious casualties only, over three quarters were in rural areas.

Over the last ten years, the total number of reported injury crashes rose to a high of 93 in 2005, and has reduced slightly since then. This is mainly due to a reduction the number of reported minor injury crashes.

### Crash trends in Waimakariri District

Year	Fatal Crashes	Serious Crashes	Minor Crashes	Total Crashes
1999	7	22	37	66
2000	3	29	32	64
2001	3	21	44	68
2002	4	11	48	63
2003	4	20	64	88
2004	7	15	63	85
2005	2	21	70	93
2006	1	19	61	81
2007	3	18	64	85
2008	3	15	63	81

### Injury crashes 2004 to 2008

Crash type or contributory cause 2004 to 2008	Local road Percentage injury crashes	State Highway Percentage of injury crashes
Alcohol	16	11
Too fast	19	10
At bends	23	18
At intersections	36	30
Road factors	10	7

### Vulnerable road users - casualties

Road user type	Local road Percentage of all casualties	State Highway Percentage of all casualties
Pedestrians	5	1
Cyclists	4	2
Motorcycles	7	7
<b>Total vulnerable</b>	16	10

Further information about 2004 to 2008 injury crashes on local roads in Waimakariri District :

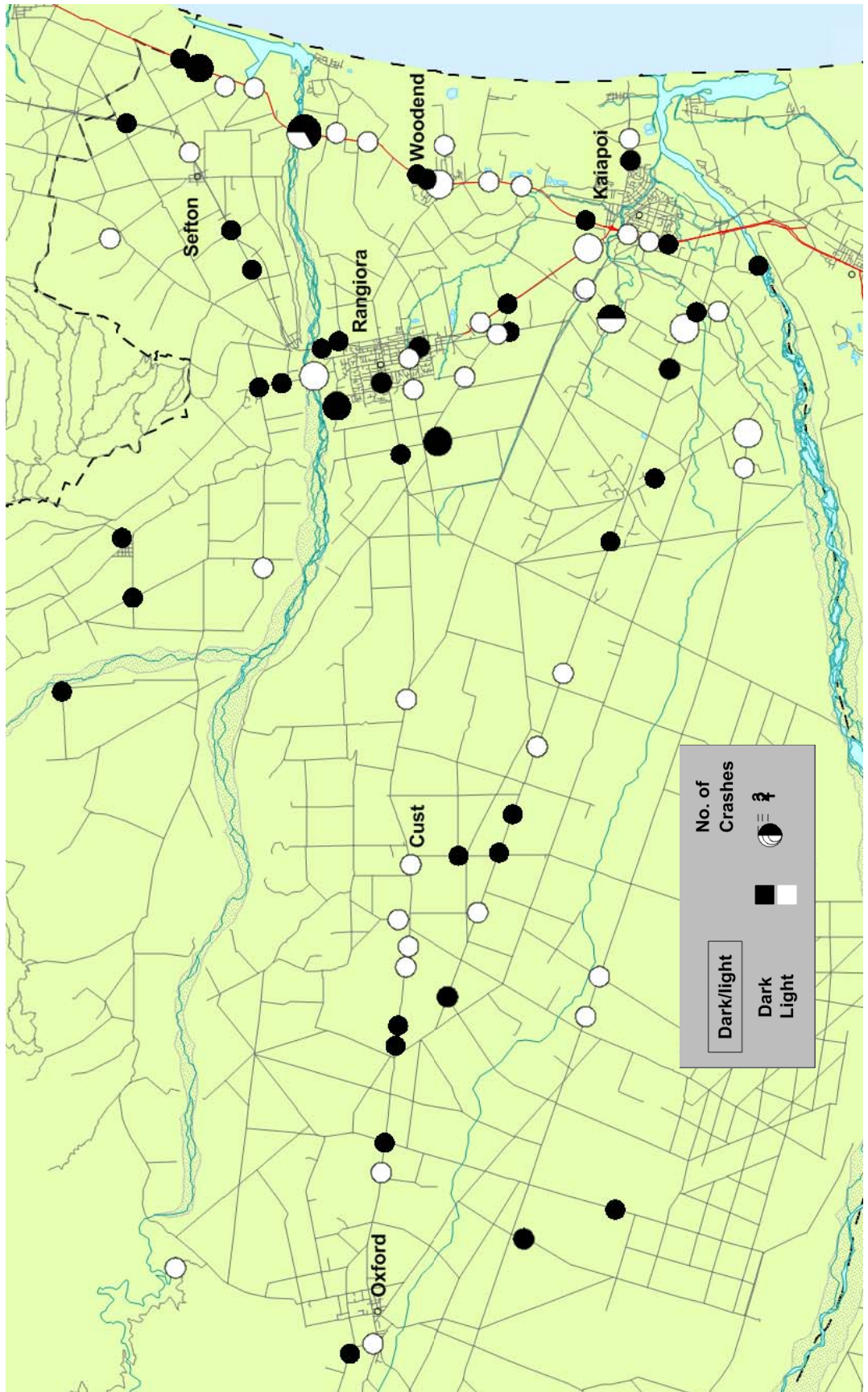
- Worst month February, March, June
- Worst day Friday
- 23 percent on wet or icy roads
- 36 percent at night
- 36 percent at intersections
- 214 roadside objects struck
- Social cost of crashes in 2008 \$26.4 m

Further information about 2004 to 2008 injury crashes on State Highways in Waimakariri District :

- Worst month January
- Worst day Friday, Saturday
- 20 percent on wet or icy roads
- 36 percent at night
- 30 percent at intersections
- 39 roadside objects struck
- Social cost of crashes in 2008 \$2.6 m



Injury straight road - loss of control or head on crashes  
Waimakariri District  
2004 - 2008



## Straight road –loss of control or head on

Between 2004 and 2008 twenty two percent of all injury crashes in Waimakariri District involved loss of control or head on crashes on straight roads.

These 94 crashes resulted in 2 fatalities, 29 serious injuries and 89 minor injuries.

### Straight road - Loss of control or head on injury crashes 2004 to 2008

Crash year	Fatal crashes	Serious crashes	Minor crashes
2004	0	6	15
2005	1	6	13
2006	0	7	15
2007	1	3	14
2008	0	1	12
Total	2	23	69

Most of these crashes occurred when a driver loses control of their vehicle and either runs off the road or collides with another vehicle. After drivers lose control their vehicles often crash into roadside hazards such as ditches, banks, poles or trees. Hitting these objects can result in a relatively minor off-road event turning into something far more serious.

The most common roadside hazards struck in injury crashes in Waimakariri District were ditches (20), fences (20), tree (14) and post or pole (12) from a total of 86 objects struck.

### Main characteristics of injury loss of control crashes— straight roads 2004 to 2008

Crash characteristic	Percentage of crashes
Single vehicle	81
Alcohol	18
Excessive speed for the conditions	18
Road factors	18
Poor handling	31
Rural road	89
Wet or icy road	22
Night time	48

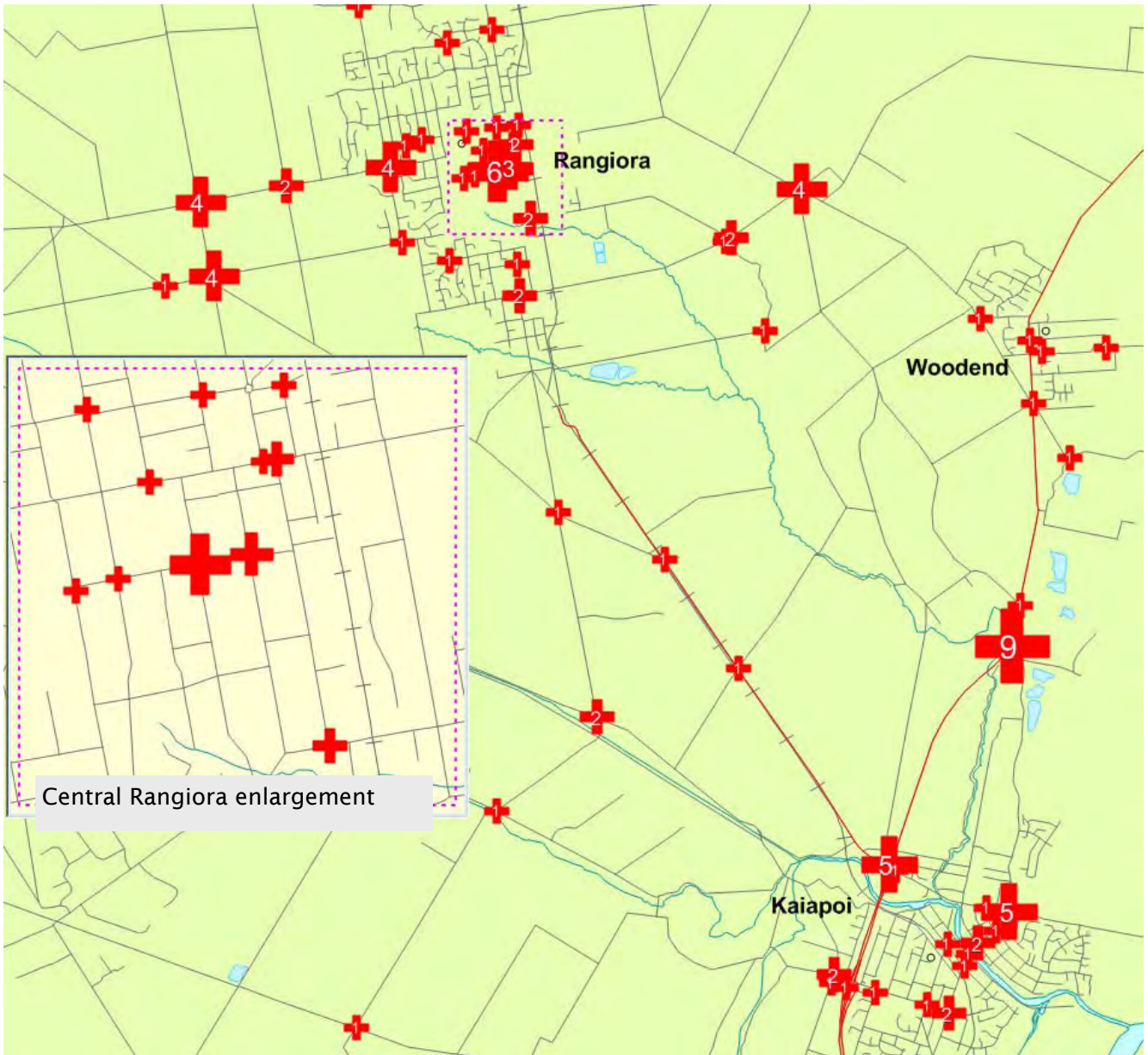
Further information about the 72 injury straight road - loss of control or head on crashes (2008 to 2008) on local roads in Waimakariri District:

- 1 death, 20 serious injuries and 69 minor injuries
- 53 percent of at fault drivers were male
- Most common crash type “off road to left”
- Most common at fault driver age group 15 to 19 years
- 17 percent of crashes involved alcohol
- 22 percent of crashes involved speed too fast for conditions
- 21 percent involved “road factors”
- 14 percent involved fatigue
- 50 percent involved fences or ditches as a struck object
- 25 percent in wet or icy conditions
- 49 percent at night
- Worst month June
- Worst day of week Thursday
- Worst time period 6 pm to 9 pm

Further information about the 22 injury straight road - loss of control or head on crashes (2004 to 2008) on State Highways in Waimakariri District:

- 1 death, 9 serious injuries and 20 minor injuries
- 52 percent of at fault drivers were male
- Most common crash type “off road to left”
- Most common at fault driver age group 15 to 19 years
- 23 percent of crashes involved alcohol
- 5 percent of crashes involved speed too fast for conditions
- 9 percent involved “road factors”
- 41 percent involved fatigue
- 18 percent involved trees as a struck object
- 14 percent in wet or icy conditions
- 45 percent at night
- Worst month November
- Worst day of week Friday
- Worst time period 6 am to 9 am

Injury crashes at Intersections  
Rangiora and Kaiapoi area  
2004 - 2008





## Intersections

During the five year period 2004 to 2008 within Waimakariri District there were a total of 443 crashes at intersections, 147 of these were injury crashes and 296 non-injury.

53 percent of these were in urban areas and 4 people were killed, 35 received serious injuries and 174 received minor injuries.

Crashes at Intersections					
	2004	2005	2006	2007	2008
Injury crash	26	37	26	26	32
Non-injury crash	46	56	51	76	67
Total	72	93	77	102	99

### Locations with the most injury crashes 2004 to 2008

Intersection name (Within a radius of 50m)	Injury crashes 2004 - 2008	total Injury crashes 2008
Main North Road / Williams Street	9	1
Percival Street / Queen Street	6	1
Lineside Road / Motorway off ramp	5	0
Williams Street / Beach road	5	2

These intersections are listed regardless of any work that may have been done in recent years.

There has been an increase in the number of reported non-injury crashes at intersection over the last five years, although there were fewer in 2008 than in 2007.

### Junction control Injury and non-injury crashes (2004 - 2008)

Junction control	Traffic signals	Nil	Give Way	Stop
Number of crashes	0	54	205	180

The most common crash type at intersections is when two drivers proceeding straight through at right angles to each other collide.

The main causes contributing to crashes described in Police reports were:

- Poor observation
- Failure to give way or stop

### Junction type Injury and Non-injury crashes

Junction Type	Rural	Urban
Roundabout	0	28
Tee	147	111
Cross (X)	54	90
Multi road	7	1
Other (includes driveways)	2	3

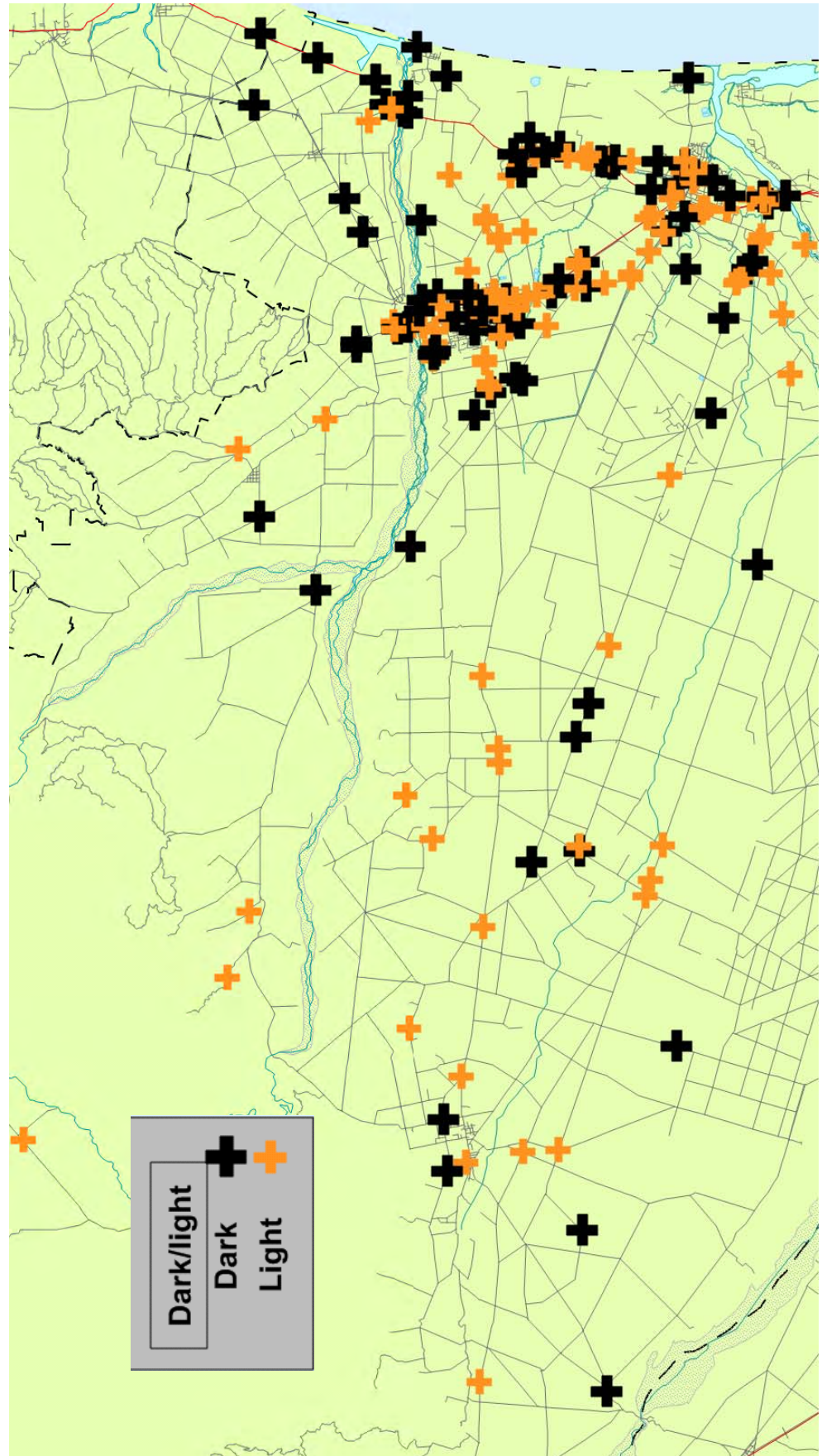
Further information about the 121 injury crashes at intersections on local roads in Waimakariri District 2004 to 2008:

- 3 deaths, 29 serious injuries and 144 minor injuries
- 21 percent wet or icy roads
- 21 percent night time
- Worst month February, November
- Worst day of week Monday, Thursday
- Worst time 3 pm till 6 pm

Further information about the 26 injury crashes at intersections on State Highways in Waimakariri District 2004 to 2008:

- 1 death, 6 serious injuries and 30 minor injuries
- 23 percent wet or icy roads
- 27 percent night time
- Worst month February, May, December
- Worst day of week Thursday
- Worst time 9 am - midday

Injury crashes involving young drivers  
Waimakariri District  
2004 - 2008





## Young drivers

Young drivers are those aged less than 25 years.

This analysis is based on injury crashes only as driver age is not recorded in non-injury crashes.

In Waimakariri District between 2004 and 2008, 45 percent of injury crashes involved young drivers. These crashes resulted in 7 fatalities, 48 serious injuries and 219 minor injuries.

There no trends apparent in the numbers of injury crashes involving young drivers.

Injury crashes involving young drivers				
	Fatal	Serious	Minor	Total
2004	3	7	26	36
2005	1	9	33	43
2006	0	7	30	37
2007	1	6	36	43
2008	1	5	26	32
Total	6	34	151	191

Just over half of the 199 young drivers in these crashes had a learner or restricted licence. Nearly two thirds of them were males and 61 percent were 15-19 year olds. Four were under 15 years old.

Most of the young drivers were local residents, but almost one quarter were from surrounding authorities.

Young drivers in injury crashes			
Licence type	Female	Male	Total
Full	25	52	77
Learner	10	15	25
Restricted	23	52	75
Overseas	2	1	3
Never licensed	5	6	11
Disqualified	0	1	1
Other (unknown, wrong class)	3	4	7
Total	68	131	199

## Injury crashes involving young drivers

Crash type or contributory cause	% of injury crashes
Alcohol	19
Speed	26
Failed to stop/Give way	19
Poor handling	19
Poor observation	40
Lost control - straight	25
Lost control - bend	28
Rear end / obstruction	18
Crossing / turning	24

Further information about the 155 injury crashes involving young drivers on local roads in Waimakariri District 2004 to 2008:

- 52 percent were single vehicle crashes
- 35 percent were on urban roads
- 37 percent at intersections
- 42 percent at night
- 28 percent in wet or icy conditions
- Worst month April
- Worst day of week Saturday
- Worst time 3 pm - 6 pm

Further information about the 36 injury crashes involving young drivers on State highways in Waimakariri District 2004 to 2008:

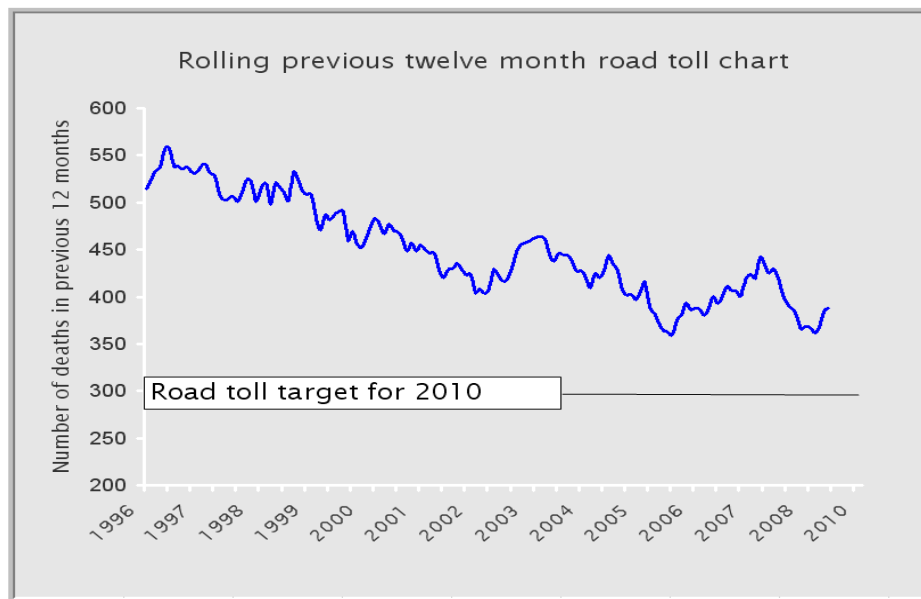
- 31 percent were single vehicle crashes
- 11 percent were on urban roads
- 31 percent at intersections
- 39 percent at night
- 22 percent in wet or icy conditions
- Worst month July
- Worst day of week Saturday
- Worst time 6 am - 9 am, 3 pm - 6 pm

## The next ten years—moving beyond Road Safety 2010

In August this year the Ministry of Transport (MoT) will embark on a nationwide road safety consultation programme as it moves to formulate priorities for the next ten years.

The chart on the right illustrates the progress made during the life of the Road Safety 2010 strategy and while progress has been made it would seem unlikely that the target of 300 or fewer fatalities will be met.

Information will be published on the Ministry of Transport web site and we would encourage any person or group with an interest in road safety to watch the site carefully for developments.



Follow this link: <http://www.transport.govt.nz/ourwork/Land/landsafety/SaferJourneys-RoadSafetyStrategyto2020/>

### Restraints

The Ministry of Transport conducts surveys of restraint use. Results are available for front, rear and child restraints although not all at a local authority level. The results of these surveys are available at the MoT website: <http://www.transport.govt.nz/research/safetybeltstatistics/>

## Contacts

### New Zealand Transport Agency

Performance Information Manager (Southern)  
Geoff Holland  
PO Box 13364  
Christchurch  
03 964 2845

Regional Communications Advisor  
Bob Nettleton  
PO Box 9058  
Dunedin  
03 951 3005

[www.nzta.govt.nz](http://www.nzta.govt.nz)

### New Zealand Police

Road Policing Manager  
New Zealand Police  
PO Box 2109  
Christchurch  
Phone 03 363 7417

[www.police.govt.nz](http://www.police.govt.nz)

### Local Authority

Road Safety Co-ordinator  
Chris Neason

Roading Manager  
Ken Stevenson

Waimakariri District Council  
Private Bag 1005  
Rangiora 7444  
Phone 03 313 6136

[www.waimakariri.govt.nz](http://www.waimakariri.govt.nz)