

road safety issues

South Waikato/Taupo Area

Land Transport New Zealand has prepared this road safety issues report. It is based on reported crash data and trends for the 2000–2004 period. The intent of the report is to highlight the key road safety issues and provide partners with an indication of the area's road safety performance.

'The data relative to your area in this report will assist you in measuring how effective your road safety strategy has been. It will also help you in your planning to ensure you apply the most appropriate intervention or mix of interventions from enforcement, education and engineering efforts to the high risk stretches of road in each area.

Land Transport New Zealand is committed to ensuring that safety will be considered as an integral part of its business.

I hope this copy of *Road Safety Issues 2005* assists you in identifying ways of achieving improved safety outcomes in your area.'

Rosalie Orr
Partnership Manager Midlands

Major road safety issues

South Waikato/Taupo Area

Poor observation

Speed

Drink-driving

Restraints and helmets

Nationally

Speed

Drink-driving

Failure to give way

Restraints



2004 road trauma for South Waikato/Taupo Area



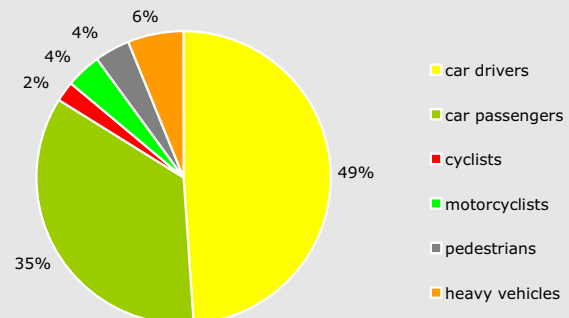
Deaths	26
Serious casualties	67
Minor casualties	194



Fatal crashes	21
Serious injury crashes	37
Minor injury crashes	122
Non-injury crashes	328

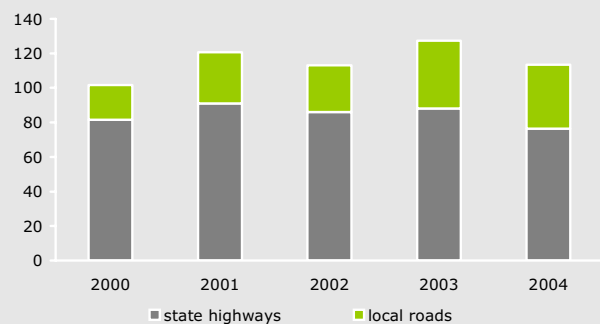
Road casualties 2000–2004

User type 2000–2004



Estimated social cost of crashes*

Social cost (\$ million)

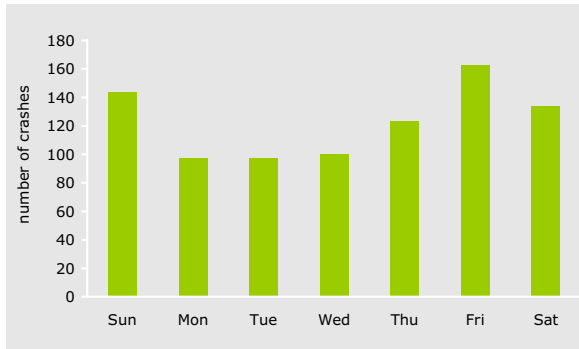


*The estimated social cost includes loss of life or life quality (estimated by the amount New Zealanders are prepared to pay to reduce their risk of fatal or non-fatal injury), loss of output due to injuries, medical and rehabilitation costs, legal and court costs, and property damage. These costs are expressed at June 2004 prices.

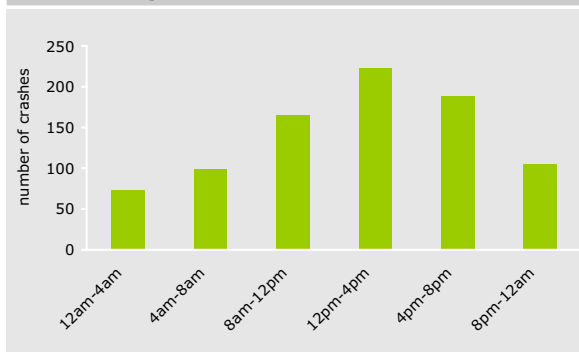
When crashes occurred

Crashes resulting in injury can occur at any time but in the South Waikato/Taupo Area from 2000 to 2004, Fridays and noon to 4 pm were the worst periods.

Day of week for crashes 2000–2004



Time of day for crashes 2000–2004



Where crashes occurred

During the 2000–2004 period, approximately 92 percent of fatal crashes (where one or more people were killed) and 73 percent of injury crashes occurred on rural roads. In rural areas there is a greater chance of a fatal crash occurring than in an urban area, due to the higher speed limits.

Location of crashes 2000–2004



Who was involved

From 2000 to 2004, 1,458 people were injured on South Waikato/Taupo Area roads.

Road user groups involved in crashes

Road user groups	Casualties urban	Casualties rural
Drivers	47%	49%
Passengers	23%	39%
Heavy vehicle occupants	4%	7%
Motorcyclists	5%	3%
Cyclists	7%	1%
Pedestrians	14%	1%

Age groups of those involved in crashes

Age groups in years	Crashes—males	Crashes—females	Population in South Waikato/Taupo Area
<5	3%	2%	8%
5–9	4%	4%	8%
10–14	5%	5%	8%
15–19	16%	16%	7%
20–24	12%	14%	7%
25–29	12%	7%	8%
30–34	9%	10%	8%
35–39	9%	6%	8%
40–44	7%	9%	7%
45–49	7%	6%	6%
50–54	5%	4%	5%
55–59	3%	5%	5%
60–64	4%	4%	4%
65–69	1%	3%	4%
70–74	1%	1%	3%
75–79	1%	2%	2%
80+	1%	2%	2%

Gender of those involved in crashes

Gender	Urban crashes	Rural crashes
Male	177	690
Female	133	450

Poor observation

Poor observation includes:

- inattention or failing to notice, eg failing to notice traffic lights while driving home on 'autopilot' and thinking about what to cook for tea
- attention being diverted, eg being distracted by children in the back seat
- not seeing or looking for another road user until too late, eg not checking behind when changing lanes or experiencing near misses at intersections.

Nationally, not seeing or looking for other parties until too late was the third highest contributing factor in injury crashes in 2004 and resulted in a total social cost of \$605 million.

Failure to see or look for another road user until too late caused 2,255 crashes in 2004 – a greater number of crashes than either speeding or drink-driving, but with a lower social cost and a lower rate of severity.

In the South Waikato/Taupo Area, poor observation was a factor in 31 percent of injury crashes in 2004, an increase from 2003, and increasing in line with the national trend.

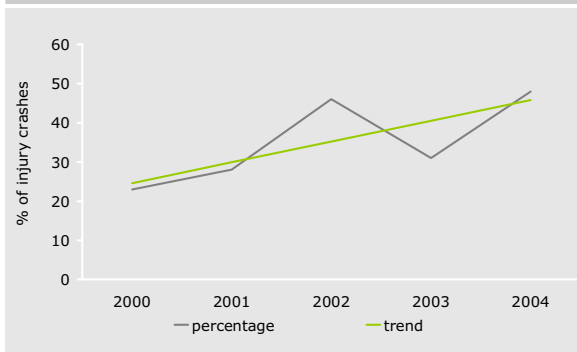
There were 221 injury crashes relating to poor observation reported in the last five years.

Poor observation was predominantly an urban issue in the South Waikato/Taupo Area in 2004 and was a factor in 48 percent of the injury crashes occurring on roads with a speed limit lower than 70 km/h.

Poor observation has increased as a factor on urban roads over the last five years, with the number of injury crashes rising from 16 in 2003 to 25 in 2004.

In the South Waikato/Taupo Area, 47 percent of poor observation crashes occurred at intersections.

Urban poor observation crashes 2000–2004



Poor observation is a challenging issue for all road safety groups to address. In particular, thought needs to be given on how to address:

- complacency of drivers
- looking but not seeing
- roading networks that contain surprises for the inattentive driver.

Key locations

The South Waikato/Taupo Area is made up of two territorial local authorities (TLAs). The following provides a breakdown of the key locations at which poor observation crashes occurred during the 2000–2004 period.

South Waikato District

SH 1 and SH 5 intersection (Tirau)

SH 1, 300 m north of Rollett Rd

SH 1 and Balmoral Dr intersection

SH 5, 750 m west of Tapapa Rd

Taupo District

SH 1 and SH 5 intersection (Wairakei)

SH 1 and Pohihipi Rd intersection

Tauhara Rd and Taharepa Rd intersection

SH 1 and Arahori St intersection

Paora Hapi St and Titirapunga St intersection

Territorial local authority performance

The following table provides the percentage of poor observation-related crashes that occurred for each TLA and their peer group during the period 2000–2004.

	TLA	Peer group*
South Waikato District	24%	30%
Taupo District	26%	30%

*Peer groups consist of TLAs which have similar geographical, population and traffic volume profiles.

Speed

Speed includes not only exceeding the speed limit, but also driving too fast for the condition of the road. No matter how good drivers think they are, speeding significantly increases the chances of crashing, resulting in serious injury or death.

- A child struck in a suburban street by a car travelling at 10 km over the speed limit will be killed.
- Driving at 100 km/h in light rain requires the same stopping distance as driving at 120 km/h on a sunny day.
- Driving at 50 km/h in dry conditions requires 37 metres stopping distance. Driving at 100 km/h in dry conditions requires 111 metres stopping distance.

Nationally, speed is one of the major contributing factors to road crashes. For the 12 months to the end of December 2004, excessive speed contributed to around 36 percent of fatal crashes and 16 percent of injury crashes.

During 2004, there were 1,769 crashes where the driver was travelling too fast for the conditions, resulting in a total social cost of \$954 million.

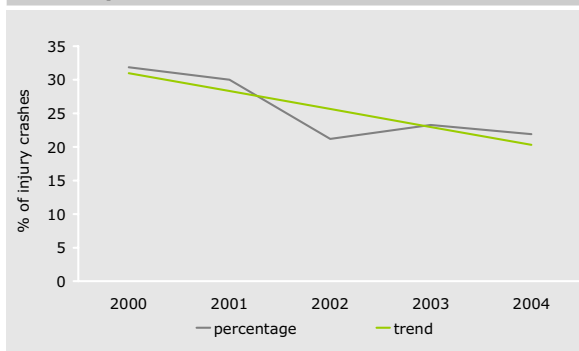
In the South Waikato/Taupo Area, excessive speed was a factor in 21 percent of injury crashes in 2004. This was an increase from 2003 and an increase against the national trend.

There were 198 speed-related injury crashes reported in the last five years.

Speeding was predominantly a rural issue in the South Waikato/Taupo Area in 2004 and was a factor in 22 percent of the injury crashes occurring on roads with a speed limit greater than 70 km/h. Most roads in the Waikato were built for 80 km/h speeds and cannot be driven safely at the open road maximum of 100 km/h.

Speed has decreased as a factor on rural roads over the last five years, with the number of injury crashes falling from 35 in 2003 to 28 in 2004.

Rural speed-related crashes 2000–2004



2004 public attitudes survey

Responses from the Waikato Region indicated:

- 29 percent of drivers said that they enjoyed driving fast on the open road
- 18 percent of drivers agreed that there was little chance of a crash when speeding if they were careful
- 25 percent of drivers thought that the risk of being caught speeding was small
- 75 percent thought that enforcing the speed limit helped to lower the number of road deaths.

Territorial local authority performance

The South Waikato/Taupo Area is made up of two territorial local authorities (TLAs). The following table provides the percentage of speed-related crashes that occurred for each TLA and their peer group during the period 2000–2004.

	TLA	Peer group*
South Waikato District	22%	21%
Taupo District	23%	21%

*Peer groups consist of TLAs which have similar geographical, population and traffic volume profiles.

Drink-driving

Alcohol affects the way people drive. Studies repeatedly show that the risk of crashing increases as a driver's blood alcohol level increases. Contrary to popular opinion, people with a high blood alcohol level are more likely to be injured or killed in a crash than those who have not consumed alcohol. If injured, they are also more likely to encounter complications in their recovery.

For every 100 drink-drivers or riders killed in road crashes, 59 of their passengers and 36 other road users die with them.

Nationally, alcohol was the second highest contributing factor in road crashes during 2004 and resulted in a total social cost of \$758 million.

For the 12 months to December 2004, alcohol-affected drivers contributed to 30 percent of all fatal crashes and 12 percent of all injury crashes.

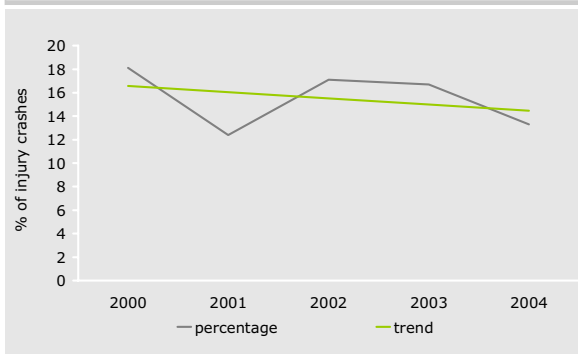
In the South Waikato/Taupo Area, alcohol was a factor in 14 percent of injury crashes in 2004, a decrease from 2003, and decreasing in line with the national trend.

There were 140 alcohol-related injury crashes reported in the last five years.

Drink-driving was predominantly a rural issue in the South Waikato/Taupo Area in 2004 and was a factor in 13 percent of the injury crashes occurring on roads with a speed limit greater than 70 km/h.

Drink-driving has decreased as a factor on rural roads over the last five years, with the number of injury crashes falling from 25 in 2003 to 17 in 2004.

Rural alcohol-related crashes 2000–2004



A small group of regular high-risk drink-drivers make up only one percent of all drivers on the road at night and weekends, but are responsible for nearly half the crash deaths at that time.

Last drink surveys are completed by New Zealand Police officers at the time of processing drink-drivers. The information from these surveys is used in a number of ways and includes assisting:

- liquor licensing assessment groups to identify at-risk premises
- the New Zealand Police to target their activities to drink-driving
- health authorities to target their activities and to monitor the impacts of any legislation changes.

2004 public attitudes survey

Responses from the Waikato Region indicated:

- five percent of drivers agreed that there was not much chance of a crash when driving after drinking if they were careful
- 33 percent of drivers believed that the overall risk of being caught drinking and driving was small
- 70 percent believed compulsory breath testing helped to lower the number of road deaths.

Key locations

The South Waikato/Taupo Area is made up of two territorial local authorities (TLAs). The following table provides a breakdown of the key locations at which drink-driving crashes occurred during the 2000–2004 period.

South Waikato District

- Waotu Road, 240 m south of Arapuni Rd
- SH 1 and Balmoral Dr intersection
- SH 1, 200 m north of Ongaroto Rd

Taupo District

- SH 1, 800 m west of SH 5
- Poihipi Rd, 1,250 m south of Tukairangi Rd
- SH 5, 1,700 m east of Palmer Mill Rd

Territorial local authority performance

The South Waikato/Taupo Area is made up of two territorial local authorities (TLAs). The following table provides the percentage of alcohol-related crashes that occurred for each TLA and their peer group during the period 2000–2004.

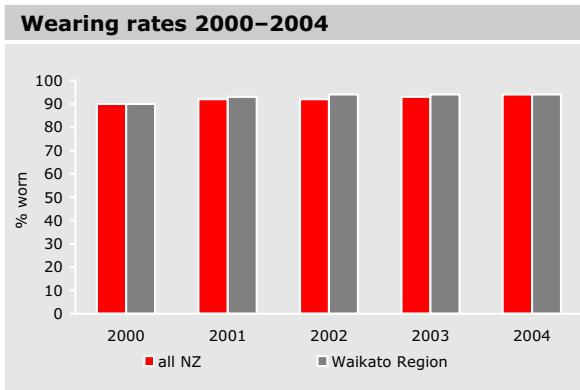
	TLA	Peer group*
South Waikato District	16%	16%
Taupo District	16%	16%

*Peer groups consist of TLAs which have similar geographical, population and traffic volume profiles.

Restraints and helmets

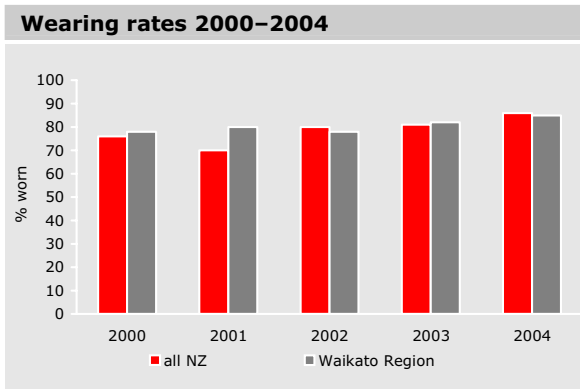
In the 12 months to March 2005, 85 people who were killed on the roads were not wearing safety belts. According to police officers, at least 20 of those lives (four were children) would have been saved had they used the restraints available to them.

Front seat safety belt use – adult



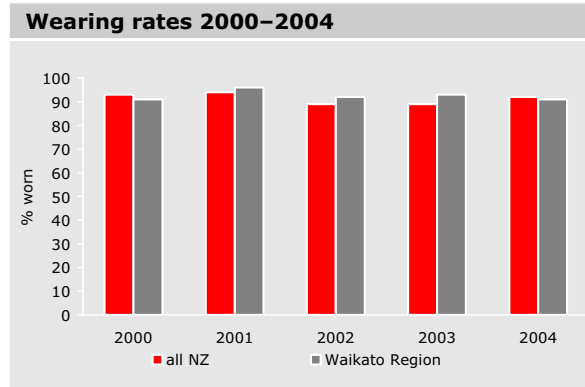
Responses from the Waikato Region to the 2004 public attitudes survey indicated that 37 percent of those surveyed thought that the chance of an adult being caught not wearing a safety belt when driving was very or fairly likely.

Rear seat safety belt use – adult



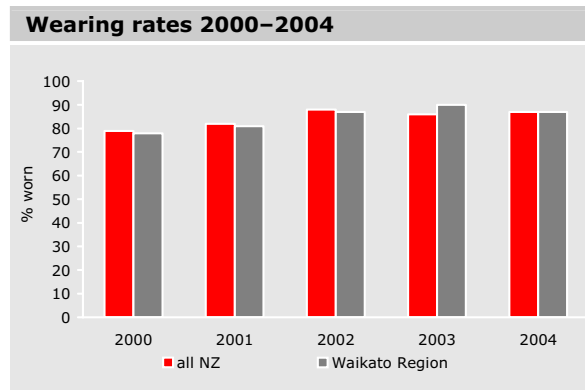
Responses from the Waikato Region to the 2004 public attitudes survey indicated that 17 percent of those surveyed thought that the chance of an adult being caught not wearing a safety belt as a rear seat passenger was very or fairly likely.

Cycle helmets



Since becoming compulsory in 1994, cycle helmet use has increased substantially. The wearing rate in the Waikato Region has fluctuated over the past three years but continues to be below the national figure.

Child restraints



Responses from the Waikato Region to the 2004 public attitudes survey indicated that 30 percent of those surveyed thought that the chance of being caught if a child under five in a back seat was not in a child restraint was very or fairly likely.

New Zealand Transport Strategy

The *New Zealand Transport Strategy* (NZTS) defines the government's vision for transport – 'By 2010, New Zealand will have an affordable, integrated, safe, responsive and sustainable transport system.'

The strategy has five main objectives:

- to assist economic development
- to assist safety and personal security
- to improve access and mobility
- to protect and promote public health
- to ensure environmental sustainability.

All modes of transport (road, rail, sea and air) will be looked at in an integrated and long-term way.

Implementation will occur through policy development, rules and legislation (such as the Land Transport Management Act), the *Road Safety to 2010* strategy, work on emissions control, measures to improve maritime and aviation security, and rail safety.

The NZTS is also a reference point for those who wish to contribute to government transport policy and planning. All future projects that seek funding from the National Land Transport Fund will have to actively take into account the strategies' objectives.

Land Transport New Zealand

The 2004 amendment to the Land Transport Management Act (LTMA) provided for the establishment of Land Transport New Zealand (Land Transport NZ), a Crown agency that assumed the responsibilities of the Land Transport Safety Authority and Transfund New Zealand from 1 December 2004.

Land Transport NZ was proposed as an outcome of the 2004 Transport Sector Review. The review sought to re-engineer the government transport sector to better enable it to deliver on the objectives of the NZTS.

Land Transport NZ's objective is to contribute to an integrated, safe, responsive and sustainable land transport system, working in partnership with central, regional and local government and many other stakeholders to help develop land transport solutions.

Land Transport NZ will focus on optimal use and development of New Zealand's land transport system, taking a long-term view.

Although there will no longer be an agency focused solely on land transport safety, safety will be maintained and improved.

Network safety co-ordination

Managing the safety of the roading network is an important task that road safety partners have been working on at both a national and regional level for many years.

The Ministry of Transport has established a Network Safety Co-ordination Group which will report to the National Road Safety Committee. This group hosted a workshop that renewed focus on the co-ordination of safety activities across the three E's approach – engineering, education and enforcement.

The workshop was to develop a model for how this co-ordinated approach could be used consistently in all regions. A commitment was made at this workshop for the co-ordinated approach to be used on the 'worst' state highway corridors in each region.

Road policing

'During 2004 the Bay of Plenty Police District saw a significant drop in the number of both fatal crashes and fatalities.

Our focus for 2005 through 2006 has not changed. The key risk behaviours on our roads remain. That is, speeding, drinking and driving and failure to wear seatbelts.

For the second year running we have analysed the drivers who were at fault from fatal vehicle crashes in the district. Some interesting patterns have emerged. The number of disqualified at-fault drivers has halved from 12 in 2003 to six in 2004. The district-wide enforcement focus on disqualified drivers has seen in excess of a 100 percent increase in apprehensions during 2004 compared with 2003. There appears to be a direct reflection of this in the fatality figures.

In making the district roads safer the aim is to be in the right place at the right time – that is, day of the week and time of day, delivering the enforcement service that best reduces road trauma.

Our goal for 2005 is to see no more than 42 people die on Bay of Plenty Police District roads, this reducing to no more than 25 by 2008.'

Inspector Kevin Taylor

Road Policing Manager – Bay of Plenty

Partnerships

Land Transport New Zealand works closely with many road safety partners at national, regional and local levels. These include government departments, enforcement agencies, territorial local authorities, health authorities and local service providers.

Some of the key road safety partners in the South Waikato/Taupo Area include:

New Zealand Police

Bay of Plenty District Road Policing Manager
Kevin Taylor
PO Box 741, Rotorua
Phone 07 349 9554

Road Safety Co-ordinators

Waikato Region
Road Safety Promotions and Marketing
Barnaby Bates
PO Box 4010, Hamilton East
Phone 07 856 7184

South Waikato District

Robert Cathie
Private Bag 7, Tokoroa
Phone 07 886 9814

Taupo District

Christine Hutchison
Private Bag 2005, Taupo
Phone 07 376 0720

Local Authority Engineers

South Waikato District Council
Alex Shaw
Private Bag 7, Tokoroa
Phone 07 886 1710

Taupo District Council

Bob Hopkins
Private Bag 2005, Taupo
Phone 07 377 9839

TNZ Area Manager

Alan Burkett
PO Box 973, Hamilton
Phone 07 957 1610

Accident Compensation Corporation

ACC Injury Prevention Consultants
Waikato/King Country area
Lisa Taylor
PO Box 952, Hamilton
Phone 07 957 5826

Rotorua and Taupo area

Louise Kirk
PO Box 649, Rotorua
Phone 07 350 0315

Assistance from Land Transport New Zealand

The Midland Regional Office is able to assist partners in activities such as:

- implementation of safety management systems
- crash reduction studies
- safety audits
- crash data provision and analysis
- general road engineering advice
- general road safety advice
- community development
- community programmes
- long-term council community plans
- land use planning
- land transport programme development.

The Land Transport New Zealand website also contains road safety information, including electronic copies of this report and all of the others that have been produced for the country. We encourage you to visit this site: www.landtransport.govt.nz

Contacts

Partnership Manager Midlands

Rosalie Orr
Phone 07 958 7840

Education

Laura Reedy
Phone 07 958 7843

Engineering

Simon James
Phone 07 958 7865

Funding

Cambell Snook
Phone 07 853 6919

Planning

Maree Faid
Phone 09 529 9936



Midland Regional Office
183 Collingwood Street
Private Bag 3081
Hamilton

Phone 07 958 7840
Fax 07 958 7866

www.landtransport.govt.nz