



briefing notes - road safety issues

The recurring themes Auckland and Northland

Land Transport New Zealand Auckland has been preparing road safety issues reports (now part of the briefing note series) for nine years using data from the Ministry of Transport's Crash Analysis System (CAS). CAS holds records of over 810,000 crashes dating back to 1980.

This document is a brief summary of all those reports and illustrates which issues were topical for each local body in the Auckland Land Transport NZ area, from Far North District in the north to Franklin District in the south.

Land Transport NZ has also written these reports in the past for the two regional council areas, two Transit New Zealand Regions and a separate Auckland Motorways report.

From 1 July 2008 Land Transport New Zealand and Transit New Zealand are being merged to form the New Zealand Transport Agency (NZTA). For this reason Transit Region One has been renamed in this document "Northland State Highways" and Transit Region Two renamed as "Auckland State Highways".

We have included a one page summary of the road safety issues for the last reporting period which uses crash data from 2003 to 2007 and maps of 2007 crashes in both regions, for clarity only fatal and serious crashes are included for the Auckland region map.

There will be road safety issues of significance beyond the scope of the main topics covered in the Road Safety Issues briefing notes and Land Transport NZ encourages local bodies, Regional Councils and the New Zealand Police to use their free access to the Crash Analysis System to identify and examine these.

Summary of the most recent Road Safety Issues Briefing Note covering crash data for the period 2003 to 2007

Road Safety Issues in the Northland Region

Local body	Bends	Road factors	Speed	Alcohol	Lost control – straight road
Northland Region	✓	✓		✓	✓
Far North District	✓	✓	✓	✓	
Whangarei District	✓	✓		✓	✓
Kaipara District	✓			✓	✓

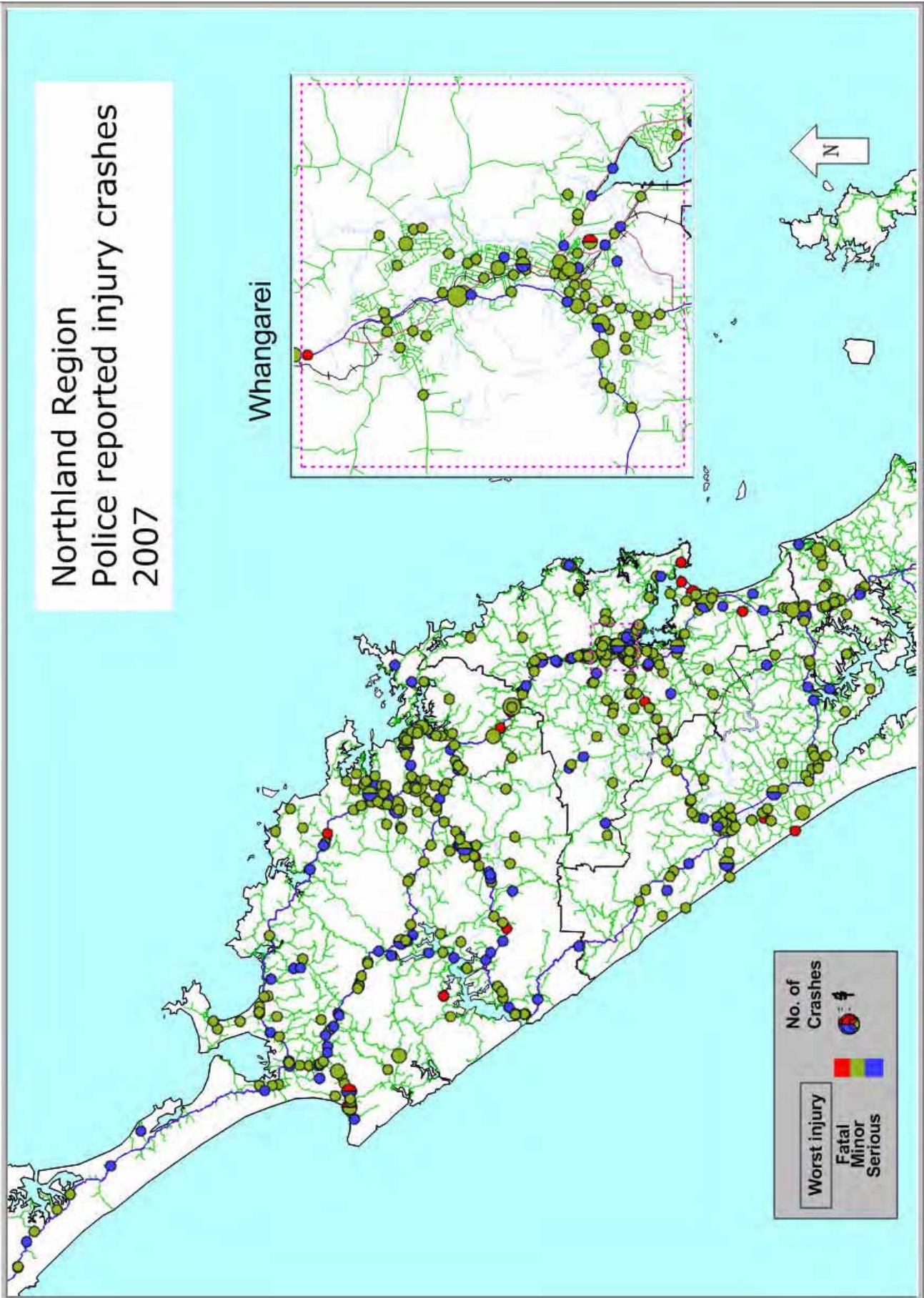
Road Safety Issues for the Auckland Region

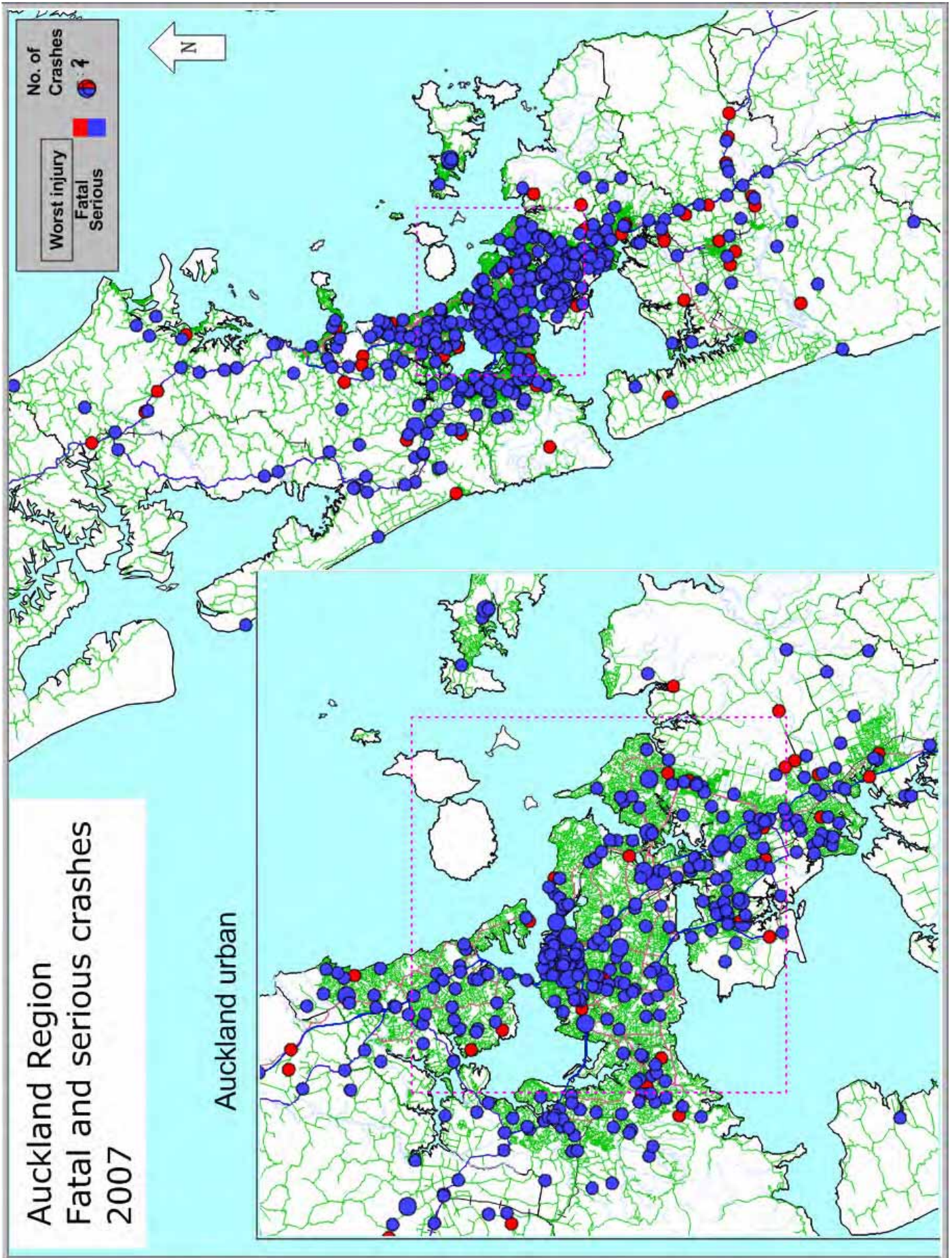
Local body	Bends	Roadside hazards	Vulnerable road users	Speed	Intersections	Alcohol	Night
Auckland Region		✓	✓		✓		✓
Rodney District	✓		✓	✓		✓	
North Shore City	✓		✓		✓		✓
Waitakere City	✓		✓		✓		✓
Auckland City	✓		✓		✓		✓
Manukau City	✓		✓		✓	✓	
Papakura District				✓	✓		✓
Franklin District	✓					✓	✓

Road Safety Issues for State Highways in Northland and Auckland

	Bends	Rear end	Speed	Alcohol	Road Factors	Night
Northland State Highways	✓		✓	✓	✓	
Auckland State Highways	✓		✓			✓
Auckland Motorways		✓		✓		✓

Northland Region
Police reported injury crashes
2007





Northland local body road safety issues — the reoccurring themes

(Year is last year in the 5 year crash data block used in reports)	Far North District	Kaipara District	Whangarei District
Speed	1999 2000 2001 2006 2007	1999 2000 2004 2005 2006	1999 2000 2001 2003 2004 2005 2006
Alcohol	Every year 1999 to 2007	2000 2001 2002 2003 2004 2005 2006 2007	1999 2000 2001 2002 2005 2006 2007
Bends (plus bend head on)	1999 2002 2003 2004 2005 2006 2007	1999 2001 2002 2003 2004 2005 2006 2007	2000 2002 2003 2004 2005 2006 2007
Vulnerable road users (could include pedestrians, cyclists and motorcyclists)	2005		2001 2002 2003 2004 2005 2006
Poor observation or failure to stop/GW Driver factors (merged with Intersection from 2006)		2005	1999
Intersection (crossing and turning)			1999 2000 2004 2005
Straights—Loss of control (plus head on)	1999 2000 2001	1999 2000 2007	1999 2000 2007
Road factor (and environmental)	1999 2000 2002 2003 2004 2005 2006 2007	1999 2000 2001 2002 2003 2004 2005	2002 2003 2007
Other	2001 passengers 2002 passengers 2003 passenger casualties 2004 passenger casualties 2005 passengers	2001 passengers 2002 crash reporting 2003 passengers	

Northland Regional Council and Northland State Highways road safety issues - the reoccurring themes

(Year is last year in the 5 year crash data block used in reports)	Northland State Highways	Northland Regional Council
Speed	1999 2000 2003 2004 2006 2007	1999 2000 2001 2002 2004 2005 2006
Alcohol	1999 2000 2001 2002 2003 2005 2006 2007	Every year 1999 to 2007
Bends (plus bend head on)	2001 2002 2004 2005 2006 2007	2001 2002 2006 2007
Straight road—loss of control		2007
Intersection (crossing & turning)	2002	2005
Loss of control (plus head on)	1999 2000 2003	1999 2000 2003 2004 2005
Roadside Hazards	2000	2002
Road factor (and environmental)	1999 2003 2004 2007	1999 2000 2001 2003 2004 2006 2007
Other	2001 Fatigue 2001 Passengers 2002 Pedestrians 2003 Pedestrians	2003 passenger casualties

Auckland local body road safety issues — the reoccurring themes

(Year is last year in the 5 year crash data block used in reports)	Rodney District	North Shore City	Waitakere City
Speed	Every year 1999 to 2007	2003	1999 2000 2001 2002
Alcohol	1999 2000 2001 2002 2003 2004 2005 2007		1999 2000 2001 2002 2003
Roadside Hazards	2002 2003 2004 2005 2006	2002 2003 2004 2005 2006	2002 2003 2004 2005 2006
Bends (plus bend head on)	Every year 1999 to 2007	1999 2000 2002 2003 2004 2005 2006 2007	1999 2001 2003 2004 2006 2007
Vulnerable road users (could include pedestrians, cyclists and motorcyclists)	2006 2007	Every year 1999 to 2007	1999 2000 2001 2003 2004 2005 2006 2007
Poor observation or failure to stop/GW Driver factors (merged with "Intersection" from 2006)		2001 2002 2003 2004 2005	2001 2002 2003 2004 2005
Intersection (crossing & turning)	1999 2000	1999 2000 2001 2006 2007	1999 2000 2001 2006 2007
Rear end		1999 2000	1999
Loss of control (plus head on)		2000	2000
Road factors (and environmental)	2000		
Night		2007	2007

Auckland local body road safety issues — the reoccurring themes

(Year is last year in the 5 year crash data block used in reports)	Auckland City	Manukau City	Papakura District	Franklin District
Speed	1999 2000 2001 2002 2003	1999 2000 2002 2003 2004 2005 2006	2007	1999 2000 2001 2002 2003 2004 2005 2006
Alcohol	1999 2006	Every year 1999 to 2007	1999 2000 2006	1999 2000 2002 2003 2006 2007
Bends (plus bend head on)	2007	2007	2001 2002	1999 2001 2002 2003 2006 2007
Roadside Hazards	2000 2001 2002 2003 2006	2000 2001	2001 2003	2001
Vulnerable road users (could include pedestrians, cyclists and motorcyclists)	Every year 1999 to 2007	Every year 1999 to 2007	1999	
Poor observation or failure to stop/GW Driver factors (merged with "Intersection" from 2006)	2005	2004		
Intersection (crossing and turning)	Every year 1999 to 2007	1999 2000 2001 2002 2003 2005 2006 2007	Every year 1999 to 2007	2002 2003 2004 2005
Wet road			2004 2005	2004 2005
Night time	2007		2004 2005 2006 2007	2004 2007
Rear End	2005			
Loss of control (plus head on)			2000 2002	1999 2000
Road factor (and environmental)			2000	1999
Other	2004 H MV 2005 Town Cntrs		2003 Rural	

Auckland Regional Council, Auckland State Highways and Auckland Motorways road safety issues - the reoccurring themes

(Year is last year in the 5 year crash data block used in reports)	Auckland Regional Council	Auckland State Highways (excluding motorways)	Auckland Motorways
Speed	1999 2001 2002	1999 2001 2003 2006 2007	1999 2000 2001
Alcohol	1999 2002	1999 2001 2002 2003 2006	2006 2007
Bends (plus bend head on)	2004 2005 2006	2001 2002 2003 2004 2005 2006 2007	2006
Intersection. (crossing turning)	1999 2000 2001 2006 2007	2003 2004 2005 2006	1999 2003
Roadside Hazards	2003 2004 2005 2006 2007		2003
Vulnerable road users (could include pedestrians, cyclists and motorcyclists)	Every year 1999 to 2007		
Poor observation or failure to stop/ Give way, driver factors (merged with "Intersection" from 2006)	2002 2003 2004 2005	2001 2002	2002 2005
Loss of control (plus head on)	1999 2000 2001 2002	1999	1999 2000 2001 2003
Rear end	2000	1999	Every year 1999 to 2007
Wet roads		2004 2005	2001
Night	2007	2007	2007
Other	2002 new drivers	Fatigue 2005	Peds 2002 Lane change 2005 Fatal and serious 2004, 2005 Friday crashes 2004

Contacts

Land Transport New Zealand

Partnership Manager (Northern)
Peter Kippenberger

Manager Performance Information (Northern)
Chris Hewitt

Managers Programmes
Brian McSwigan (Transit)
Geoffrey Mansell (ARTA)

Private Bag 106 602
Auckland

Phone 09 969 9800

Whangarei Office

Manager Programmes: John Garvitch
Phone 09 459 6315
Education Advisor: Paul Scott
Phone 09 459 6314

Level 2, ANZ Building
cnr Rathbone & Robert Streets
PO Box 1664
Whangarei
Fax 09 459 6318

www.landtransport.govt.nz

Road Safety Co-ordinator (Auckland Regional Transport Authority)

Andrew Bell
Private Bag 92012
Auckland

Phone 09 366 4422

www.roadsafeauckland.org.nz

Road Safety Co-ordinator (Far North)

Kiri Sloane
PO Box 200, Kaitaia
Phone 09 408 1380

Road Safety Co-ordinator (Whangarei/Kaipara)

Gillian Archer
PO Box 1124, Whangarei
Phone 0274 938703

New Zealand Police

Superintendent John Kelly
Road Policing Manager
New Zealand Police
Waitematā
Private Bag 33 1046
North Shore City

Phone DDI: (09) 488-9756

Inspector Clifford Paxton
Road Policing Manager
Private Bag 9016
Whangarei

Phone 09 430 4500

Transit New Zealand

Regional Manager
Peter Spies
PO Box 1459
Auckland

Transit New Zealand
Area Engineer Auckland North
Cyril Gunaratne
PO Box 1899, Whangarei
Phone 09 430 4355

Highways North
Incident reporting
0800 111 655