



# REGIONAL FUEL TAX FOURTH QUARTER REPORT

1 April – 30 June 2022

Waka Kotahi NZ Transport Agency

12 August 2022

v1.0

## **Copyright information**

Copyright ©. This copyright work is licensed under the Creative Commons Attribution 4.0 International licence. In essence, you are free to copy, distribute and adapt the work, as long as you attribute the work to Waka Kotahi NZ Transport Agency and abide by the other licence terms. To view a copy of this licence, visit <http://creativecommons.org/licenses/by/4.0/>.

## **Disclaimer**

Waka Kotahi has endeavoured to ensure material in this document is technically accurate and reflects legal requirements. However, the document does not override governing legislation. Waka Kotahi does not accept liability for any consequences arising from the use of this document. If the user of this document is unsure whether the material is correct, they should refer directly to the relevant legislation and contact Waka Kotahi.

## **More information**

Waka Kotahi NZ Transport Agency  
ISSN 2624-3725

If you have further queries, call our contact centre on 0800 699 000 or write to us:

Waka Kotahi NZ Transport Agency  
Private Bag 6995  
Wellington 6141

This document is available on Waka Kotahi NZ Transport Agency's website at [www.nzta.govt.nz](http://www.nzta.govt.nz)

## Contents

Introduction.....	4
Executive Summary.....	5
Fuel delivered inside the scheme area.....	6
Fuel delivered outside the scheme.....	8
Fuel prices inside and outside the scheme area.....	10
Compliance checks .....	14
Definitions .....	16

---

## Introduction

A regional fuel tax (RFT) scheme (the scheme) was implemented on 1 July 2018 for the Auckland region, excluding Great Barrier Island (the scheme area). The purpose of the RFT is to enable additional investment for transport projects in the Auckland region as set out in Auckland Council's RFT proposal approved by the Minister of Transport and the Minister of Finance.

RFT is charged at a rate of 10 cents per litre (plus GST) on petrol and diesel (including their bio-variants) when first delivered to locations such as service stations, commercial fuel storage tanks, machines, marinas and vehicles inside the Auckland region. Waka Kotahi NZ Transport Agency administers the collection of RFT directly from fuel distributors (also known as 'taxpayers') and forwards the tax collected to Auckland Council, less any rebates paid and service cost.

This report covers Waka Kotahi's quarterly reporting requirements under section 65Y(3) of the Land Transport Management Act 2003 (LTMA). Waka Kotahi is required to report to the Minister of Transport quarterly and publish this report online.

RFT quarterly reporting periods for 2021/22 financial year are:

- Q1 2021/22: 1 July – 30 September
- Q2 2021/22: 1 October – 31 December
- Q3 2021/22: 1 January – 31 March
- Q4 2021/22: 1 April – 30 June

This report relates to the fourth quarter (Q4). Please note, as mentioned in the report, fuel volume data for outside Auckland is reported one quarter in arrears.

### COVID-19

This reporting period includes the COVID-19 Protection Framework (known as the traffic light settings), which placed restrictions from 23 January 2022 under the red traffic light setting.

On the 13 April 2022, all of Aotearoa was placed into the orange traffic light setting, which remains in place.

### RECENT GOVERNMENT CHANGES TO FUEL TAX

Due to the global energy shock and a spike in the recent prices of fuel, on 14 March 2022 the government announced an immediate cut of 25c a litre off petrol excise duty and road user charges, in a cost-of-living relief package, which will be in effect until 31 January 2023.

This will mean reduced revenue for the National Land Transport Fund, which funds our investment in transport infrastructure and services. The Government will meet the cost of this through savings and reprioritisation from the COVID Response and Recovery Fund.

## Executive Summary

This section sets out a high-level summary of the findings in this report.

### Volume

- Within RFT scheme area this quarter:
  - the volume of *petrol* distributed within the scheme area increased against the previous quarter
  - the volume of *diesel* distributed within the scheme area decreased against the previous quarter.
- Outside RFT scheme area in Q3 2021/22 (*latest quarter where data is available*):
  - the volume of *petrol* distributed outside the scheme area increased against the previous quarter
  - the volume of *diesel* distributed outside the scheme area increased against the previous quarter.

### Price

- Median prices inside the scheme area for 91 octane petrol are 83 cents per litre higher this quarter compared to the Q4 2017/18 baseline. Compared to Q3 2021/22, prices have increased by 12 cents per litre.
- Median prices outside the scheme area for 91 octane petrol are 69 cents per litre higher this quarter compared to the Q4 2017/18 baseline. Compared to Q3 2021/22, prices have increased by 13 cents per litre.
- Fuel prices continue to differ across the country, this quarter:
  - Hawke's Bay recorded the lowest 91 octane petrol prices across the country at **274.9** cents per litre (compared to the lowest of 263.9 cents per litre last quarter recorded in Manawatu-Wanganui)
  - Auckland recorded the highest 91 octane petrol prices across the country at **290.9** cents per litre (compared to the highest of 278.9 cents per litre last quarter recorded in Auckland).

### Compliance and exemptions

- No complaints or concerns were raised to Waka Kotahi regarding bringing untaxed fuel into the region.
- No exempt sites were referred for onsite inspection.
- Ten exempt sites were assessed for renewal, eight renewed, one declined, and one withdrawn.
- No taxpayers have been penalised in this quarter.

## Fuel delivered inside the scheme area

The quarterly data for the volume of fuel delivered inside the scheme area is collected from regional fuel taxpayers' monthly returns, required under section 65V of the LTMA. Due to legislative requirements and internal processing timeframes, this data is available the month following the end of the quarter. The quarterly totals for petrol and diesel in Table 1 include all fuel delivered within the Auckland scheme area, whether or not it was liable for RFT (except for fuel exported to the Pacific Islands).

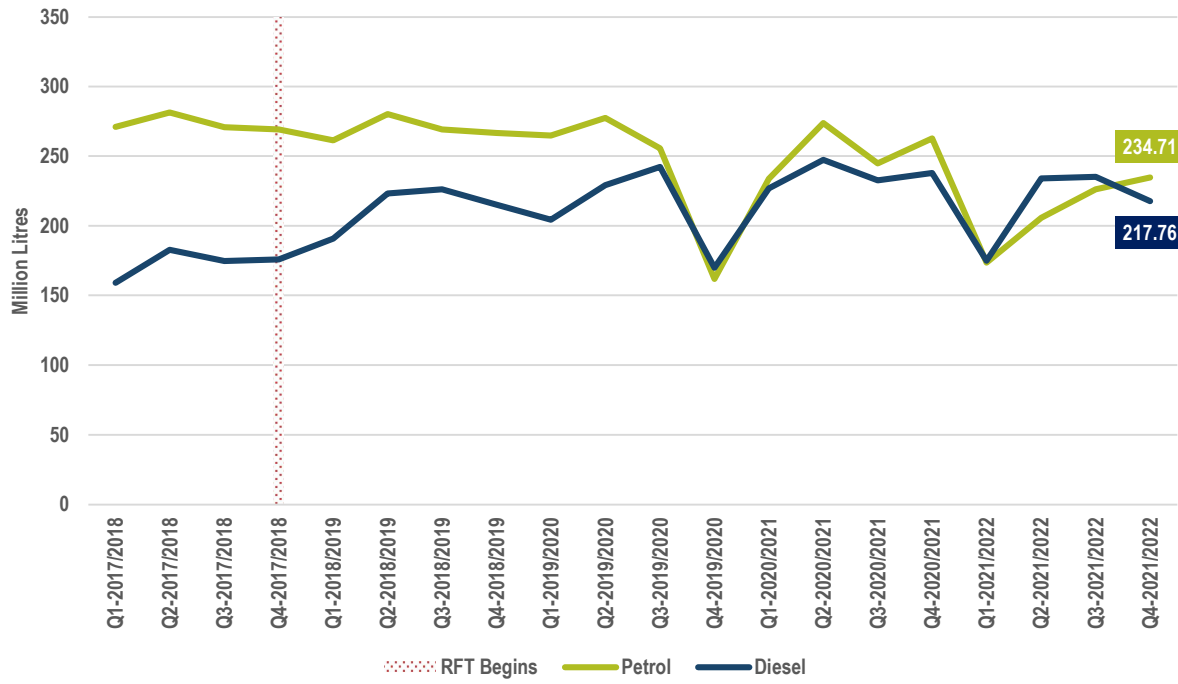
To accurately observe changes to fuel and diesel volumes before the RFT scheme took effect requires comparable baseline data. Historical baseline data was collected from Auckland Council's Local Authority Fuel Tax (LAFT) returns to calculate an approximate baseline for fuel and diesel volumes prior to the implementation of the RFT scheme. It should be noted that the Auckland LAFT geographical area differs to the geographical area covered by the RFT scheme area as LAFT returns for fuel sold within the Auckland region includes Great Barrier Island. Since the baseline data is not directly comparable, Figure 1 represents an approximate change in the volume of fuel delivered in the Auckland RFT scheme area against baseline.

**Table 1 – Fuel volumes delivered inside the scheme area**

	Total volume delivered inside the scheme area (million litres)	Total volume delivered inside the scheme area (million litres)	Total volume delivered inside the scheme area (million litres)
	<i>Petrol</i>	<i>Diesel</i>	<i>Petrol + Diesel</i>
Q4 2017/18: 1 Apr - 30 Jun (baseline before RFT implemented)	269.15	175.80	444.95
Q4 2018/19: 1 Apr - 30 Jun	266.57	215.16	481.73
Q1 2019/20: 1 Jul - 30 Sep	264.69	204.29	468.98
Q2 2019/20: 1 Oct - 31 Dec	277.34	229.24	506.58
Q3 2019/20: 1 Jan - 31 Mar	255.53	242.34	497.87
Q4 2019/20: 1 Apr - 30 Jun	161.82	169.79	331.61
Q1 2020/21: 1 Jul - 30 Sep	233.77	226.81	460.58
Q2 2020/21: 1 Oct - 31 Dec	273.71	247.51	521.23
Q3 2020/21: 1 Jan – 31 Mar	244.83	232.65	477.48
Q4 2020/21: 1 Apr – 30 Jun	262.78	237.83	500.61
Q1 2021/22: 1 Jul - 30 Sep	173.59	174.90	348.49
Q2 2021/22: 1 Oct - 31 Dec	205.80	234.09	439.89
Q3 2021/22: 1 Jan - 31 Mar	226.12	235.14	461.26
Q4 2021/22: 1 Apr - 30 Jun	234.71	217.76	452.47

Note: The data for the baseline (fuel sold) and this quarter (fuel delivered) is derived from different sources and therefore, particularly for diesel, may not reflect the total volume of fuel delivered inside the scheme area. The fuel volumes include both petrol and diesel (including bio-fuels and ethanol portions).

**Figure 1 – Fuel volume delivered inside the scheme area**



## Fuel delivered outside the scheme

The quarterly and baseline data for fuel volumes delivered outside the scheme area is collected by other government organisations for the whole of Aotearoa. To estimate the volume of petrol and diesel fuel distributed outside the scheme area, Waka Kotahi must subtract the scheme area volumes from the total volumes for the entire country. The reported volume includes fuel imports, refining volumes (not exported out of the country) and stock change. The baseline data is calculated similarly but subtracts the LAFT volume sold within the Auckland region (including Great Barrier Island), meaning the baseline is not directly comparable.

Due to the complexities of how this information is collected, there is a significant delay in obtaining data for quarterly reporting. Since the volume data is delayed and Waka Kotahi is committed to providing this report in a timely manner, fuel volume delivered outside the Auckland scheme area is reported one quarter in arrears.

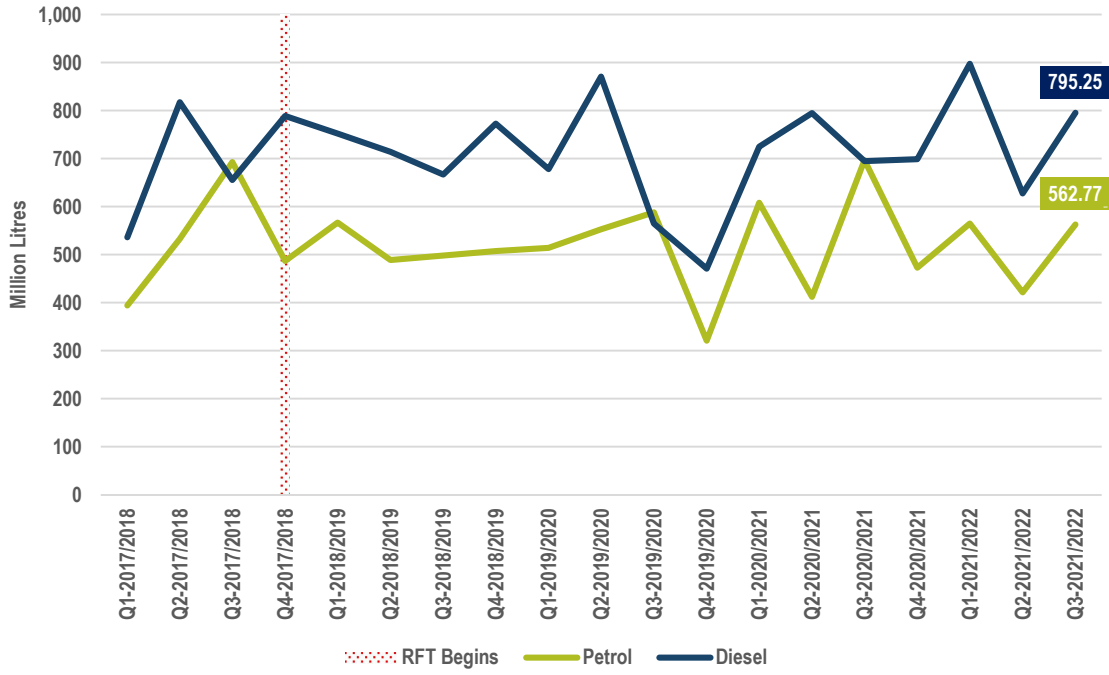
**Table 2 – Fuel volumes delivered outside the scheme area**

	Total volume delivered outside the scheme area (million litres)	Total volume delivered outside the scheme area (million litres)	Total volume delivered outside the scheme area (million litres)
	<i>Petrol</i>	<i>Diesel</i>	<i>Petrol + Diesel</i>
Q4 2017/18: 1 Apr - 30 Jun (baseline before RFT implemented)	486.64	788.84	1,275.48
Q3 2018/19: 1 Jan - 31 Mar	498.48	666.67	1,165.15
Q4 2018/19: 1 Apr - 30 Jun	507.69	777.62	1,285.31
Q1 2019/20: 1 Jul - 30 Sep	514.35	678.08	1,192.43
Q2 2019/20: 1 Oct - 31 Dec	552.56	870.95	1,423.51
Q3 2019/20: 1 Jan - 31 Mar	587.89	564.84	1,152.73
Q4 2019/20: 1 Apr - 30 Jun	321.50	470.93	792.43
Q1 2020/21: 1 Jul - 30 Sep	608.06	724.72	1,332.78
Q2 2020/21: 1 Oct - 31 Dec	412.16	794.48	1,206.64
Q3 2020/21: 1 Jan – 31 Mar	697.00	694.87	1,391.87
Q4 2020/21: 1 Apr - 30 Jun	472.70	698.75	1,171.45
Q1 2021/22: 1 Jul – 30 Sep	565.06	897.78	1,462.84
Q2 2021/22: 1 Oct – 31 Dec	421.40	627.77	1,049.17
Q3 2021/22: 1 Jan – 31 Mar	562.77	795.25	1,358.02

Note: This information is provided by other government and fuel distribution organisations and reported one quarter in arrears. The fuel volumes include both petrol and diesel (including bio-fuels and ethanol portions).



**Figure 2 – Fuel volume delivered outside the scheme area**



## Fuel prices inside and outside the scheme area

Under section 65Y(3)(b) of the LTMA, Waka Kotahi is required to report information on fuel prices inside and outside the scheme area. To meet this obligation, Waka Kotahi had to identify a source for fuel price reporting in Aotearoa. Waka Kotahi used standard procurement processes and Datamine, a third-party provider, was determined to be the most appropriate supplier of fuel price data for this report.

Datamine information is publicly sourced, cleansed and aggregated through robust statistical methodologies prior to being provided to Waka Kotahi. This means the final quality of the dataset cannot be independently verified by Waka Kotahi. The price observations are based on 'board prices' (including GST), which means discounts from individual service stations are included but customer promotions (eg discount vouchers and loyalty schemes) are excluded from the dataset.

**Table 3 – Median fuel prices by region (NZD cents per litre including GST)**

	Baseline (Q4 2017/18) (1 April – 30 June 2018)				Q4 2021/22 (1 April – 30 June 2022)			
	91	95	98	Diesel	91	95	98	Diesel
<b>Auckland</b>	207.90	222.90	226.90	138.90	290.90	294.90	295.90	267.70
<b>Median outside scheme area (for comparison with AKL)</b>	211.90	222.90	226.90	142.90	280.90	291.70	294.90	250.90
Bay of Plenty	206.70	220.90	222.70	135.90	283.90	293.90	293.70	249.70
Canterbury	219.90	226.90	236.90	152.90	278.90	287.30		248.90
Gisborne	208.00	221.90	227.90	136.90	284.10	291.00	282.70	251.70
Hawke's Bay	205.90	217.90	217.70	135.90	274.90	288.70	295.70	245.90
Manawatū-Whanganui	205.90	219.90	228.70	134.90	279.90	291.70	292.70	247.90
Marlborough	219.90	226.90	235.90	151.90	281.90	289.60	296.90	252.90
Nelson	221.90	230.90	238.90	157.90	282.90	291.90		252.80
Northland	212.70	221.90	217.70	141.90	289.70	293.50	296.70	260.70
Otago	219.90	224.90	234.90	152.90	281.50	293.90		249.90
Southland	213.90	219.90		143.90	278.00	288.60		249.90
Taranaki	201.90	214.90	218.70	132.50	275.70	289.90	293.90	251.90
Tasman	219.40	223.90	239.90	152.90	281.60	294.60		245.30
Waikato	207.90	221.00	224.70	136.90	281.70	292.70	293.90	256.70
Wellington	215.90	226.90	236.90	148.90	289.70	293.90	296.90	256.90
West Coast	223.90	228.90	251.90	155.90	290.60	292.90		252.90

Note: The fuel prices for 91, 95 and 98 octane petrol are recorded where available and blank cells indicate no prices were observed.

**Table 4 – Fuel price range by region for Q4 1 April – 30 June 2022 (NZD cents per litre including GST)**

	91			95			98			Diesel		
	Lowest	Median	Highest	Lowest	Median	Highest	Lowest	Median	Highest	Lowest	Median	Highest
Auckland	249.00	290.90	323.20	276.10	294.90	310.50	282.60	295.90	306.20	191.50	267.70	335.30
<b>Median outside scheme area (for comparison with AKL)</b>	231.60	280.90	325.80	252.60	291.70	322.20	272.10	294.90	312.30	179.00	250.90	323.80
Bay of Plenty	234.70	283.90	325.00	262.80	293.90	318.20	273.60	293.70	310.00	178.20	249.70	321.00
Canterbury	226.80	278.90	325.10	245.10	287.30	323.40				176.20	248.90	318.50
Gisborne	237.70	284.10	321.40	266.80	291.00	313.70	273.70	282.70	294.80	169.10	251.70	331.40
Hawke's Bay	232.00	274.90	318.20	252.90	288.70	317.10	277.90	295.70	308.20	178.10	245.90	312.90
Manawatū-Whanganui	234.00	279.90	323.10	254.70	291.70	319.60	272.60	292.70	309.10	178.90	247.90	321.70
Marlborough	237.00	281.90	322.70	255.20	289.60	320.50	296.90	296.90	296.90	187.80	252.90	318.50
Nelson	241.20	282.90	319.20	257.00	291.90	321.50				181.80	252.80	316.10
Northland	239.50	289.70	328.10	271.30	293.50	311.60	275.20	296.70	311.90	188.30	260.70	325.90
Otago	224.50	281.50	330.20	245.80	293.90	329.20				176.00	249.90	324.70
Southland	229.00	278.00	323.80	250.00	288.60	319.80				185.70	249.90	313.40
Taranaki	228.30	275.70	323.50	254.00	289.90	319.70	272.70	293.90	310.20	174.90	251.90	327.20
Tasman	241.00	281.60	320.50	258.80	294.60	324.00				174.10	245.30	326.60
Waikato	234.30	281.70	325.00	259.20	292.70	318.60	266.70	293.90	316.40	185.20	256.70	327.40
Wellington	237.30	289.70	328.00	261.40	293.90	318.30	277.70	296.90	311.00	180.40	256.90	331.20
West Coast	249.70	290.60	321.00	265.00	292.90	315.60				191.50	252.90	318.10

Note: The fuel prices for 91, 95 and 98 octane petrol are recorded where available and blank cells indicate no prices were observed.

Figure 3 shows the difference between scheme area fuel prices and the average fuel price nationally outside the scheme area. This report compares average prices inside and outside the scheme area after the RFT implementation.

**Figure 3 – Price difference between fuel inside and outside of the scheme area (raw figures)**

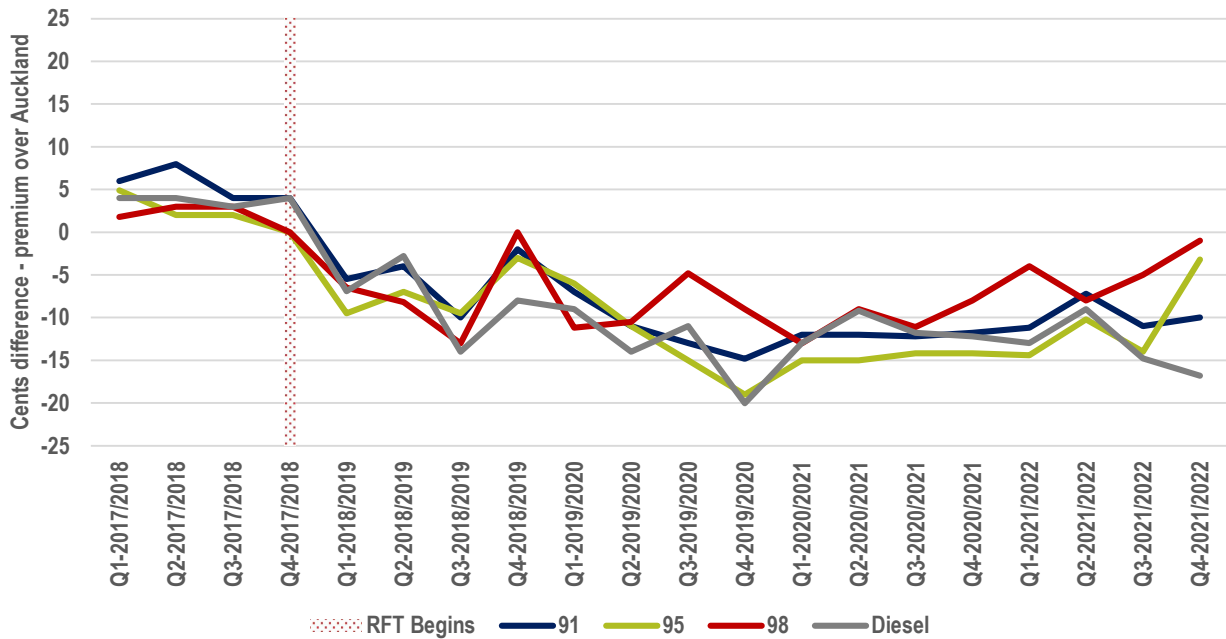
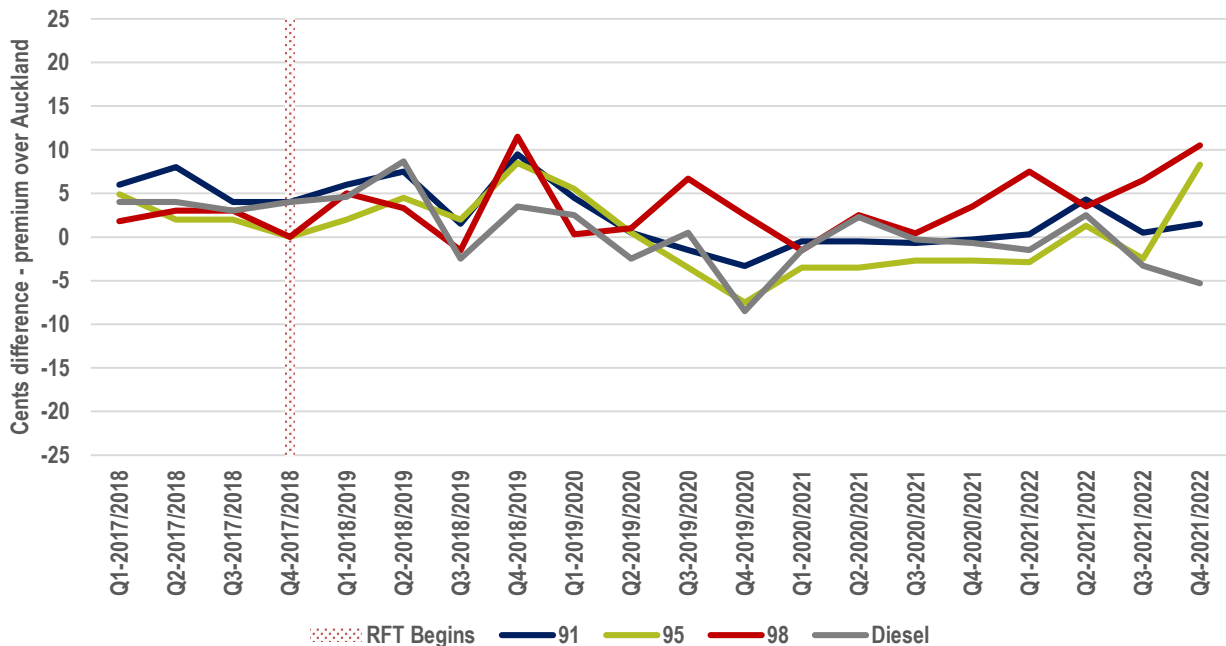


Figure 4 shows the difference between average fuel prices inside and outside the scheme for 91, 95, 98, and diesel fuels when adjusting out the expected 11.5c impact arising from introducing RFT.

**Figure 4 – Price difference between fuel inside and outside the scheme area (adjusted figures)**



Note in figures 3 and 4 there is a significant movement in the price difference of 95 octane from Q3 to Q4. It is assumed that the reasons for this is due to supply chain or other market issues.

Figure 5 illustrates the difference between 91 petrol fuel prices in the scheme area and other regions.

**Figure 5 – Price differences between the scheme area and other regions (raw figures)**

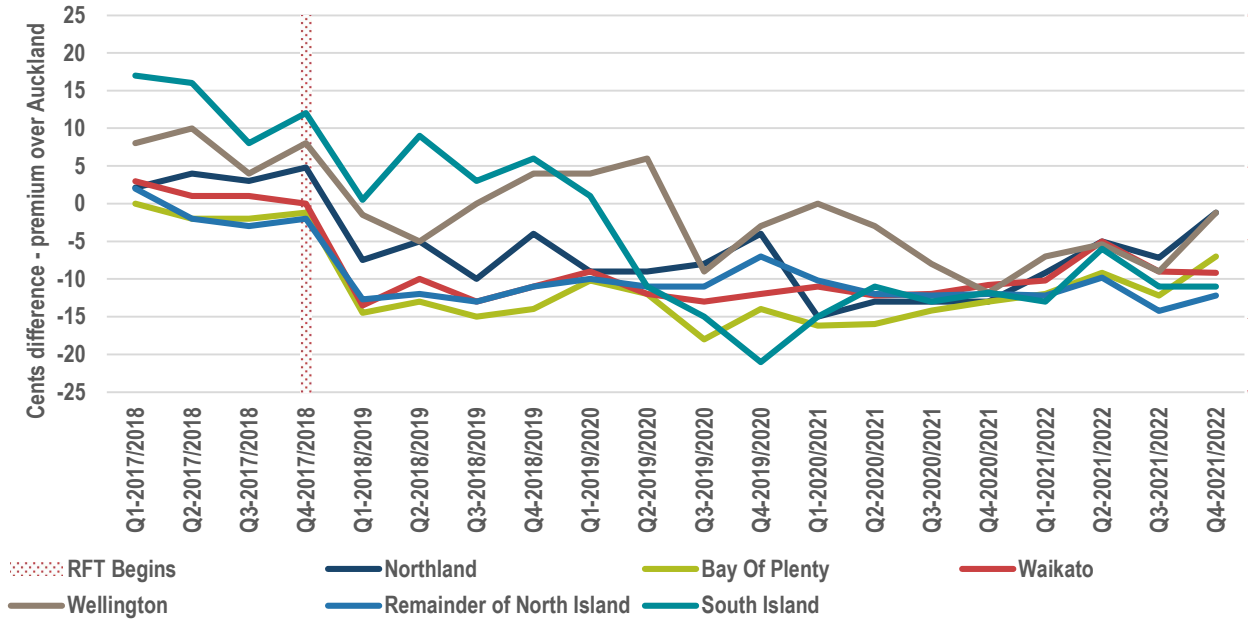
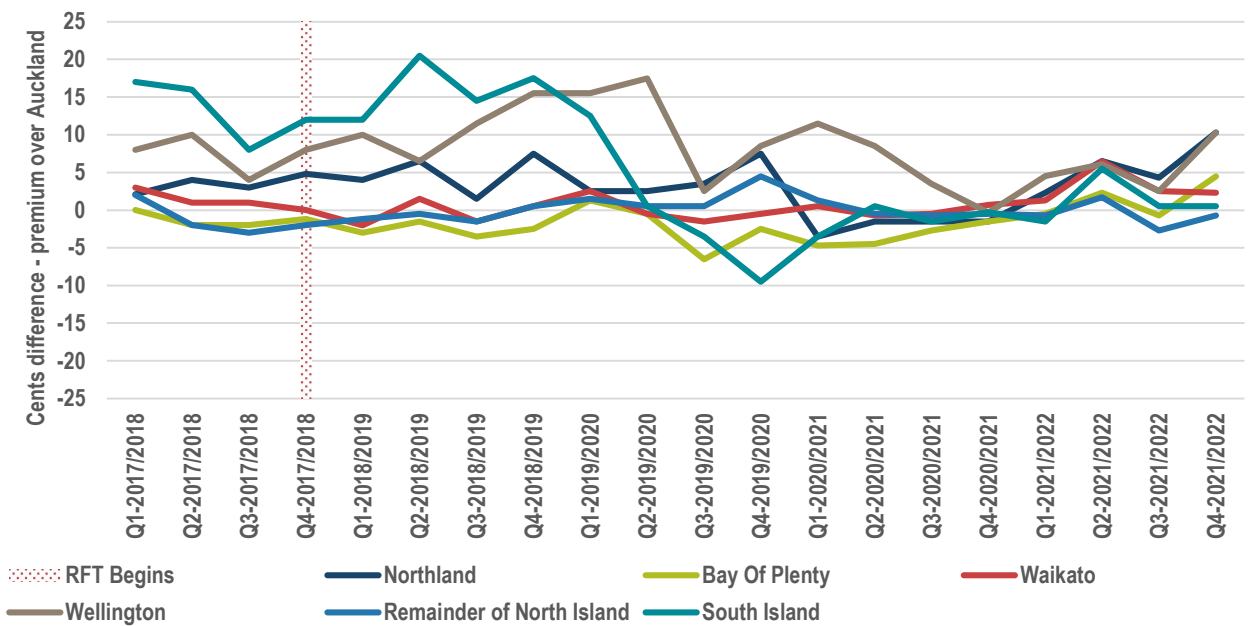


Figure 6 shows the difference between average fuel prices inside and outside of the scheme area for 91 octane petrol in various regions when adjusting out the expected 11.5c impact from the introduction of RFT.

**Figure 6 – Price differences between scheme area and other regions (adjusted figures)**



## Compliance checks

Under section 65Y3(c) and (d) of the LTMA, Waka Kotahi must report information on non-compliance with the RFT scheme and on avoidance of RFT.

Waka Kotahi is guided by Tū ake, tū māia (stand up, stand firm), its regulatory strategy underpinned by good regulatory practice: effective, firm and fair, and a 'real world' regulator.

As the first point of non-compliance checks, Waka Kotahi has developed assessment processes for RFT revenue collection and rebates.

Waka Kotahi is resourced to conduct RFT audits. These audit investigations are to identify avoidance of RFT and non-compliance within the Auckland RFT scheme.

Taxpayer audits are scheduled to review company procedures and fuel management systems (first component). The second component of each of these audits will include an analysis of fuel distribution data and a re-assessment of tax payable if required.

### **Site exemptions (sites exempt from paying RFT)**

This includes site inspections, reports and recommendations upon customer applications for a site exemption, and the renewal/amendment of an approved exempted site.

Audit frequency: As required (referred through RFT assessments or chosen at random).

### **Scheduled/unscheduled taxpayer (fuel distributor) audits**

This includes audits of all regional fuel taxpayers' record-keeping systems and their compliance in reporting and paying RFT.

Audit frequency: Taxpayer audits are completed according to an audit schedule, and as required (referred through RFT assessment processes).

### **Rebate claim audits**

This includes targeted and randomly targeted audits of rebate customers' RFT rebate claims.

Waka Kotahi has now collected sufficient data and evidence from rebate claimants to identify targeted audits.

Audit frequency: As required (referred through RFT assessment processes).

### **Bureau audits**

Bureaus are organisations that file rebate claims on behalf of another entity (customer) for a fee. Upon entering into a service agreement with Waka Kotahi, bureaus must undergo an audit of their internal processes and systems. Bureaus are also subject to ongoing regular audits to evaluate compliance and remediation of any issues identified. These include audits of rebate claims submitted.

Audit frequency: As required (referred through RFT assessment processes).

**Table 5 – Scheduled compliance activities**

Scheduled compliance activities
<p>Q4 2021/22</p> <hr/> <p>No exempt sites were referred for onsite inspection.</p> <p>Ten exempt sites were assessed for renewal, eight renewed, one declined, and one withdrawn.</p> <p>The bureau/rebate claimant which made a formal request, in regard to Kawau Island (Hauraki Gulf), to have either the RFT Auckland boundary moved so that the island is outside of the boundary, or for Kawau Island to become an RFT exempt site, was completed, and declined, in Q4 2021/22.</p> <p>A taxpayer audit, which was postponed due to COVID-19, is expected to be completed in Q1 2022/23.</p> <p>An audit of the taxpayer, referred to in Table 6 Q3 2021/22, for un-reported tax, has commenced and is expected to be completed in Q2 2022/23.</p>
<p>Q3 2021/22</p> <hr/> <p>No exempt sites were referred for onsite inspection.</p> <p>One exempt site was assessed and renewed.</p> <p>A bureau audit, commenced in Q3 2021/22, is expected to be completed in Q4 2021/22.</p> <p>A bureau/rebate claimant made a formal request, in regard to Kawau Island (Hauraki Gulf), to have either the RFT Auckland boundary moved so that the island is outside of the boundary, or for Kawau Island to become an RFT exempt site. An outcome is expected to be completed in Q4 2021/22.</p> <p>A taxpayer audit, which was postponed due to COVID-19, is expected to be completed in Q4 2021/22.</p> <p>An audit of the taxpayer, referred to in Table 6 for Q3 2021/22 for un-reported tax, has commenced and is expected to be completed in Q1 2022/23.</p>
<p>Q2 2021/22</p> <hr/> <p>No exempt sites were referred for onsite inspection.</p> <p>Three exempt sites were assessed and renewed.</p> <p>An assessment of one new bureau was conducted. The bureau has now been approved.</p> <p>A taxpayer audit, which was postponed due to COVID-19, is expected to be completed in Q3 2021/22.</p> <p>Another taxpayer audit which was commenced in Q1 2021/22, is expected to be completed in Q3 2021/22.</p>
<p>Q1 2021/22</p> <hr/> <p>One exempt site was referred for onsite inspection. This was conducted, and assessed, however the application was declined by Waka Kotahi.</p> <p>Six exempt sites were assessed for renewal, four renewed, one declined, and one withdrawn.</p> <p>A bureau audit, which was expected to be completed in Q1 2021/22, has been completed.</p> <p>An assessment of one new bureau was conducted. The bureau has now been approved.</p> <p>A taxpayer audit, which was postponed due to COVID-19, is expected to be completed in Q2 2021/22.</p> <p>Another taxpayer audit was commenced in Q1 2021/22.</p> <p>An audit advisory letter has been created for all new bureaus, so they fully understand the RFT audit requirements and processes.</p>

**Table 6 – Activity of non-compliance and tax avoidance**

	Non-compliance	Avoidance
Q4 2021/22	There were no instances of non-compliance and/or tax avoidance and therefore there were no penalties applied during this quarter.	No complaints or concerns were raised to Waka Kotahi regarding bringing untaxed fuel into the region.
Q3 2021/22	A taxpayer has been penalised for under-reporting tax and has since paid both the under-reported tax and the under-reporting penalty.	No complaints or concerns were raised to Waka Kotahi regarding bringing untaxed fuel into the region.
Q2 2021/22	A taxpayer has been penalised for under-reporting tax and has since paid both the under-reported tax and the under-reporting penalty.	No complaints or concerns were raised to Waka Kotahi regarding bringing untaxed fuel into the region.
Q1 2021/22	Two taxpayers have been penalised for under reporting tax and have since paid both the under-reported tax and the under-reporting penalty.	No complaints or concerns were raised to Waka Kotahi regarding bringing untaxed fuel into the region.

## Definitions

The following definitions are Waka Kotahi’s interpretation of non-compliance and avoidance when specifically referring to section 65Y3(c) and (d).

- **Non-compliance:** includes any act or omission by any person subject to obligations under an RFT scheme that results in the person failing to comply with any of their obligations under the RFT provisions of the LTMA and its regulations.
- **Avoidance:** includes any act or omission by any person subject to obligations under an RFT scheme that results in the person avoiding (or attempting to avoid) RFT, where Waka Kotahi considers on reasonable grounds that the act or omission was deliberate or fraudulent in nature.