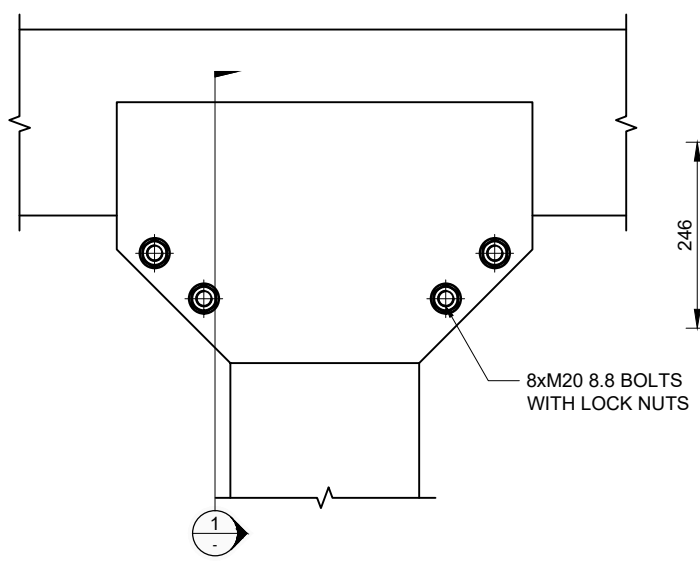
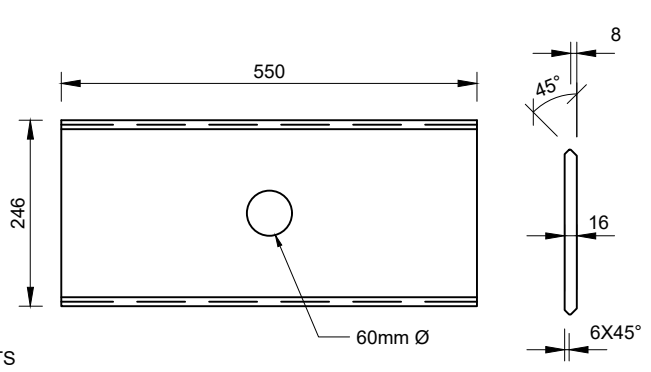


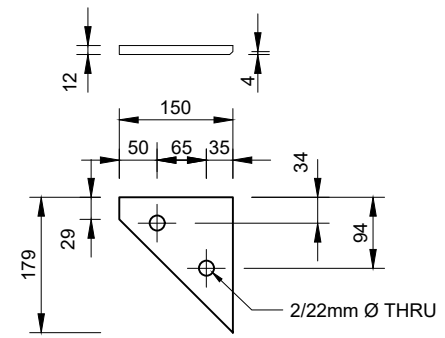
200 mm
100
50
10 mm
0



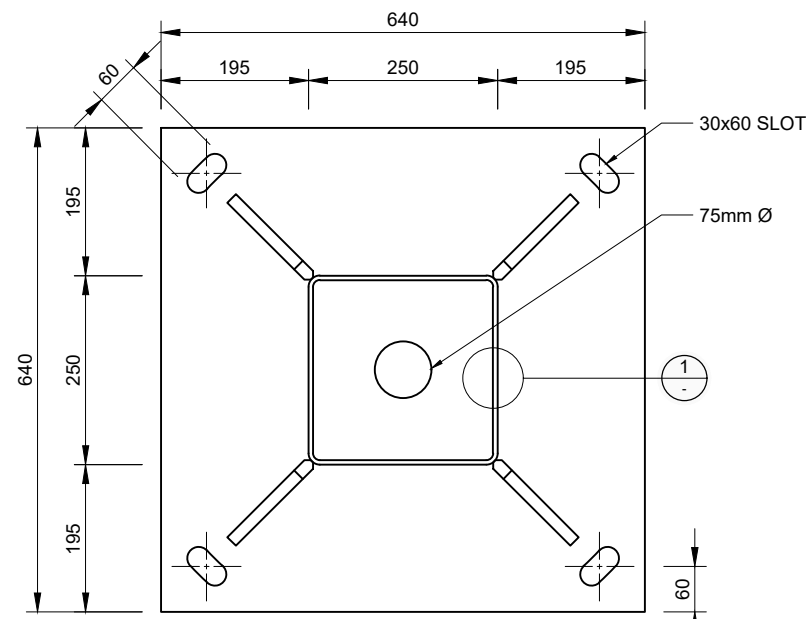
POST BRACKET DETAIL
SCALE: 1:10



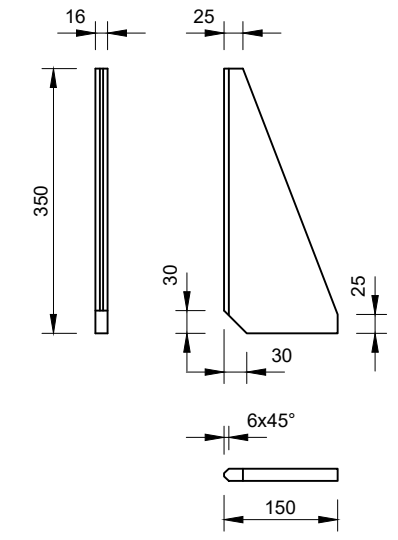
TOP PLATE (1 REQUIRED)
SCALE: 1:10



TOP PLATE GUSSETS (4 REQUIRED)
SCALE: 1:10



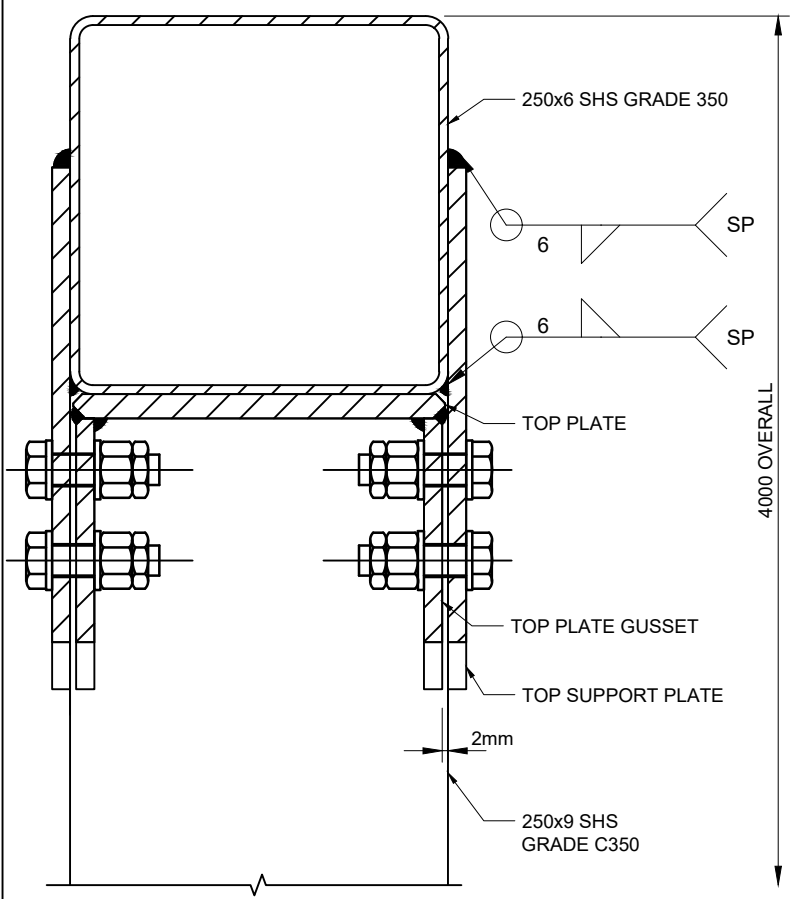
BASE PLATE DETAIL
SCALE: 1:10



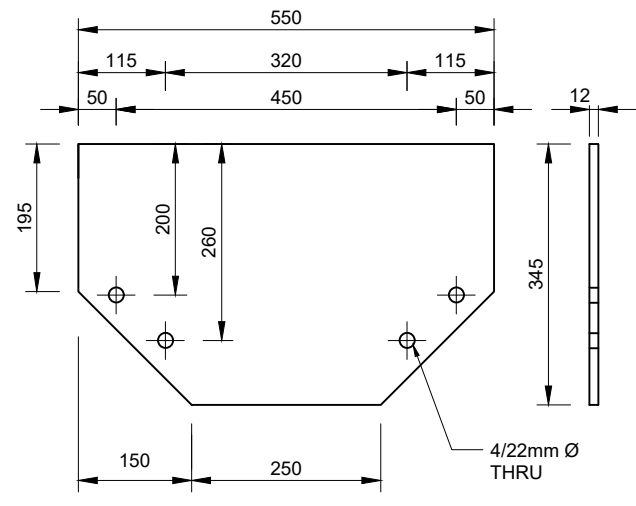
BASE PLATE GUSSET (4 REQUIRED)
SCALE: 1:10



A POST/BASE PLATE WELD DETAIL
SCALE: 1:10



1 SECTION 1
SCALE: 1:5



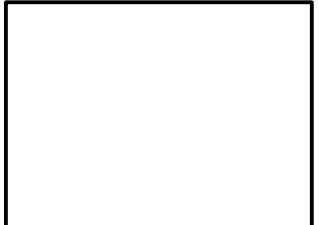
TOP SUPPORT PLATE (2 REQUIRED)
SCALE: 1:10

FABRICATION NOTES

1. FABRICATION SHALL BE IN ACCORDANCE WITH SECTION 14 OF NZS 3404: PART 1 AND SHALL BE UNDER COMPETENT SUPERVISION.
2. FABRICATOR SHALL VERIFY ALL DIMENSIONS PRIOR TO COMMENCING ANY CUTTING OR FABRICATION WORK.
3. ALL WELDING SHALL BE CARRIED OUT IN ACCORDANCE WITH THE REQUIREMENTS OF THE AS/NZS 1554: PART 1. THE BASEPLATE AND POST BRACKET DETAILS ARE TO BE WELD CATEGORY SP.
4. ALL BUTT WELDS SHALL BE FULL PENETRATION UNLESS NOTED OTHERWISE.
5. ALL FILLET WELDS SHALL BE 6MM CONTINUOUS UNLESS NOTED OTHERWISE.
6. ALL WELDED JOINTS SHALL BE FULLY SEALED TO PREVENT CREVIS CORROSION.
7. E48XX GR. ELECTRODES WITH NORMAL RECOVERY ARE TO BE USED IN THE MANUAL METAL ARC WELDING PROCESS.
8. ALL PLATE MATERIALS SHALL COMPLY WITH AS/NZS 3678. BASE PLATE GRADE 350, ALL OTHER PLATE, GRADE 250.
9. ALL STEEL SECTIONS SHALL COMPLY WITH AS/NZS 3679, GRADE 250, AND ROLLED HOLLOW SECTIONS TO AS 1163, GRADE 350 AND C450 AS SPECIFIED.
10. ALL PLATE SECTIONS SHALL BE PLASMA CUT, ALL HOLES DRILLED. REMOVE ALL SHARP EDGES.
11. ALL BOLTS, NUTS AND WASHERS SHALL COMPLY WITH AS 1252 GRADE 8.8.
12. ALL STEEL SURFACES AND COMPONENTS SHALL BE HOT DIP GALVANISED TO 75 MICRON F.F.T IN ACCORDANCE WITH AS/NZS 4680.
13. IF A PAINTED SYSTEM IS REQUIRED, THE PAINT SYSTEM SHALL BE SUITABLE FOR APPLICATION OVER GALVANISING AND SHALL BE IN ACCORDANCE WITH AS/NZS 2312.
14. ALL BOLT HOLES THRU HOLLOW SECTIONS TO BE SLEEVED. SEE TYPICAL SLEEVED HOLE DETAIL ON SHEET 83.

DISCLAIMER: SEE SHEET 000-0000-0-7104-00

NO.	REVISION	DATE	BY	CHECKED	DATE
DESIGN			AFR		03.14
DRAWN			AST	AFR	09.14
REC'D			T.L.HARRIS		11/06/18
APPROVED			P.ROONEY		06/18
R1	ADAPTED FROM 6/1277/41/7604/68 R3	11/06/18	TLH		
	AMENDMENT		APP'D	DATE	



TITLE NZ TRANSPORT AGENCY VARIABLE MESSAGE SIGNS VMS SUPPORT STRUCTURE-STANDARD DESIGN-RURAL					
RURAL VMS TYPE A & B SINGLE POST SUPPORT TOP & BASE PLATE DETAILS					
STATUS	STANDARD	FILE	000-000-0-7104-82-R1		
SCALE	AS SHOWN @ A3	PLOT DATE	15/06/18 @ 10:15	FEATURE IDENTIFIER	1/1061/370
		CODE	7104	SHEET	82
		REVISION			R1

14/06/2018 12:31