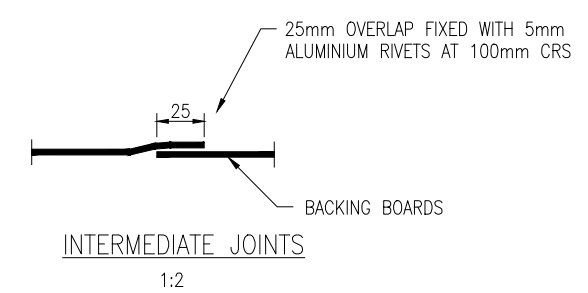
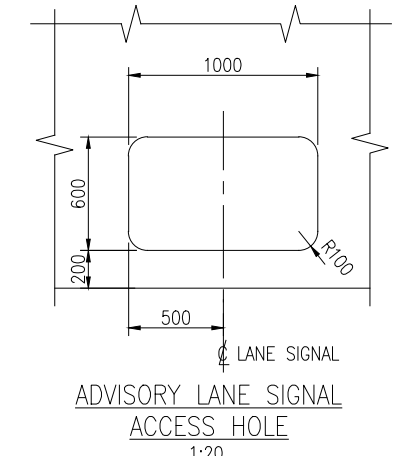
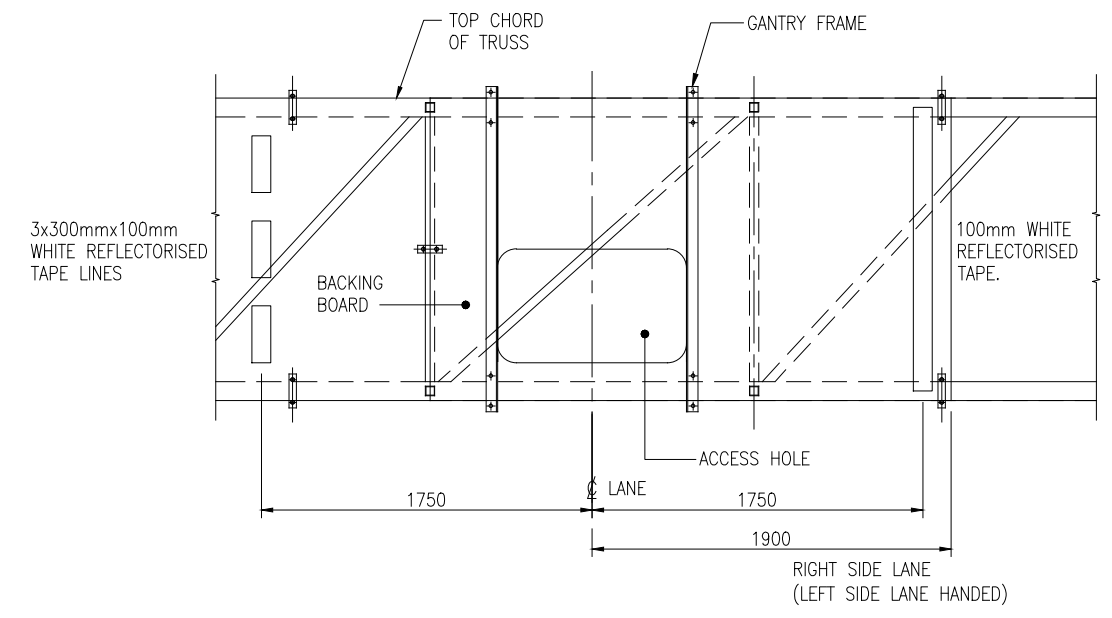
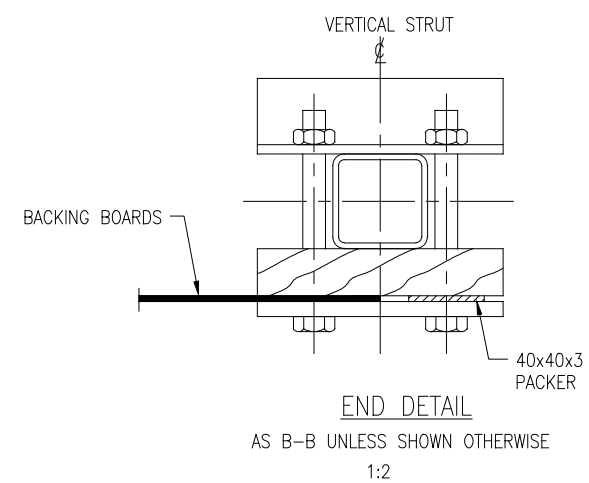
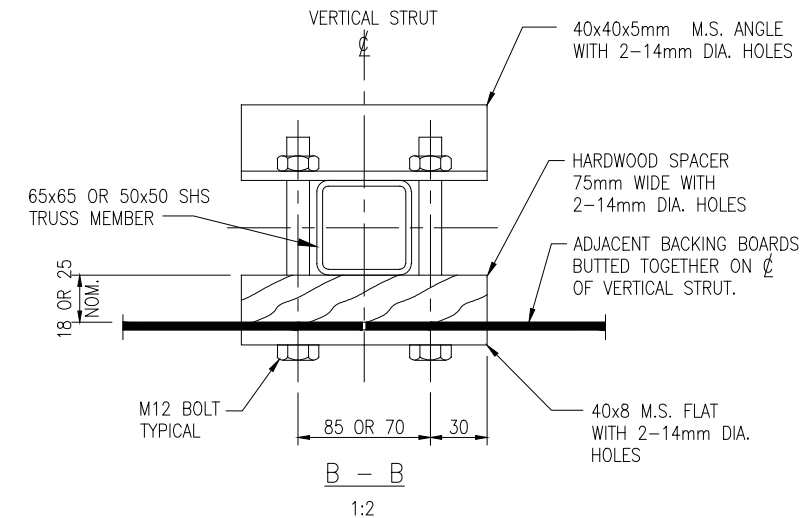
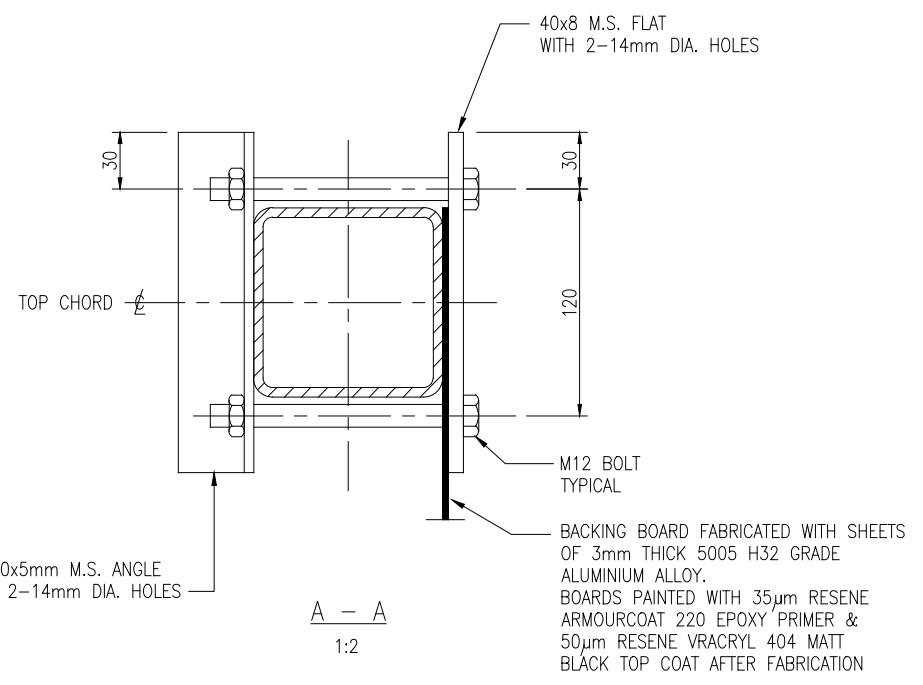
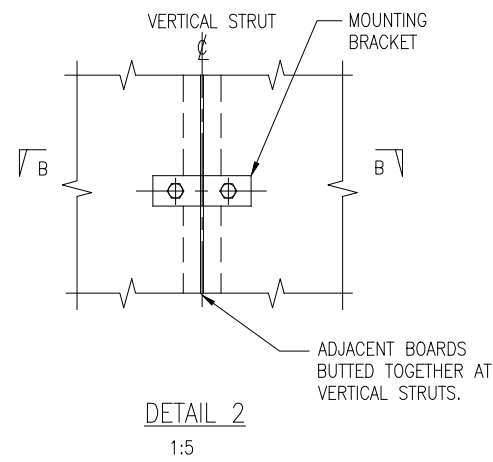
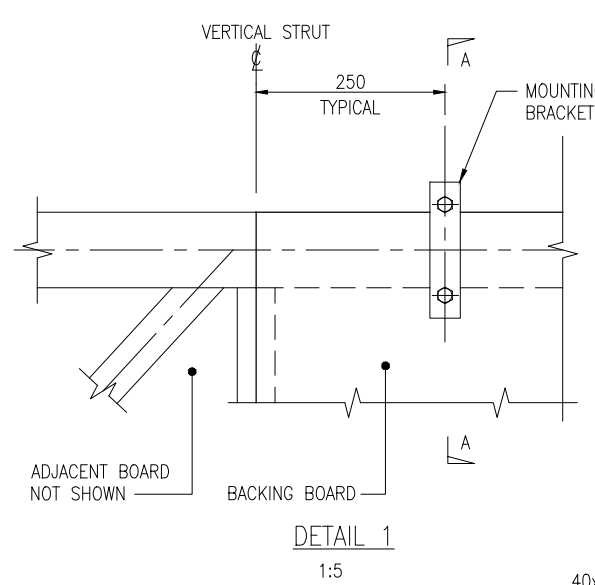


300 mm
200
100
50
10 mm
0

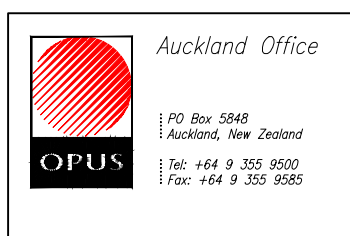


NOTES

1. ALL BOLTS TO BE MILD STEEL. SPRING WASHERS TO BE USED UNDER ALL NUTS.
2. ALL STEELWORK INCLUDING NUTS, BOLTS AND WASHERS TO BE HOT-DIP GALVANISED AFTER FABRICATION IN ACCORDANCE WITH SPECIFICATION T-CES 306.
3. 'MALTHOID' OR SIMILAR APPROVED GASKET MATERIAL MUST BE USED BETWEEN ALUMINIUM BACKING BOARDS AND ANY GALVANISED STEEL COMPONENTS.
4. IF TRUSS SITE JOINTS ARE USED THE BACKING BOARDS ARE TO BE TRIMMED AROUND THEM AND THE MOUNTING BRACKETS MOVED ACCORDINGLY, TO THE SATISFACTION OF THE DESIGNER.

DISCLAIMER: SEE SHEET 000-0000-0-7104-00

			BY	CHECKED	DATE
			DESIGN	SUPPLIER	12/00
			DRAWN	A.S.C.	12/00
			REC'D	T.L. HARRIS	10/8/11
			APPROVED	S.D. HEWETT	8/11
R2	ITS STANDARDS UPDATE	TLH	5/6/15	This drawing and its contents are the property of Opus International Consultants Limited. Any unauthorised employment or reproduction, in full or in part, is forbidden.	
R1	OCTOBER 2014 UPDATE	TLH	14/10/14		
	AMENDMENT	APP'D	DATE		



TITLE					
NEW ZEALAND TRANSPORT AGENCY INTELLIGENT TRANSPORT SYSTEMS STANDARD					
LCS GANTRY BACKING BOARDS					
STATUS	STANDARD	FILE	000-0000-0-7104-62-R2		
SCALE	AS SHOWN	PLOT DATE	04/06/15 @ 11:03	FEATURE IDENTIFIER	1/1061/370
		CODE	7104	SHEET	62
		REVISION			R2