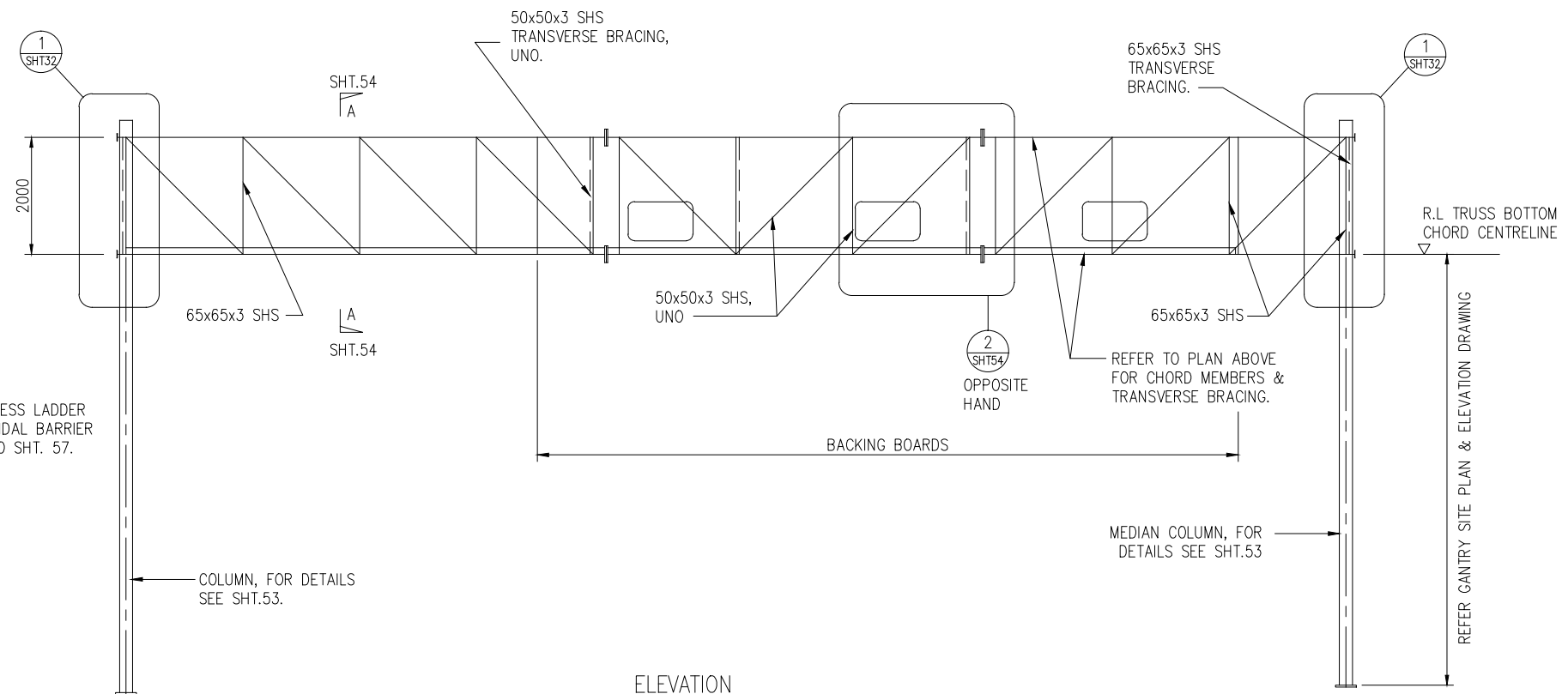
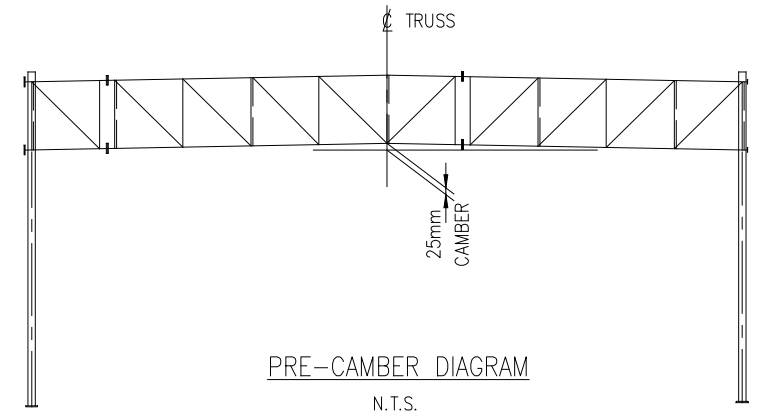


**PLAN**  
(TOP FACE OF TRUSS SHOWN, BOTTOM FACE SIMILAR)  
1:50

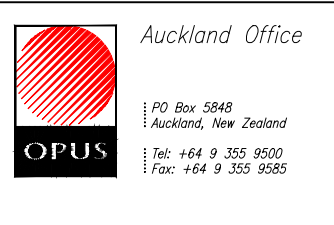


**ELEVATION**  
(NEAR FACE OF TRUSS SHOWN, FAR FACE SIMILAR)  
1:50

- NOTES:**
1. ALL SHS AND CHS MEMBERS IN THE BOX TRUSS SHALL BE GRADE 350, UNO.
  2. THE BOX TRUSS SHALL BE GRIT BLASTED AFTER FABRICATION AND ZINC SPRAYED PER SPECIFICATIONS.
  3. ALL BOLTS, NUTS AND WASHERS ETC. SHALL BE HOT DIP GALVANISED.
  4. EACH BOLT TO HAVE A WASHER, NUT AND LOCKNUT.
  5. THE DIMENSION BETWEEN THE BOTTOM OF THE BASEPLATE AND CENTRELINE OF THE BOX TRUSS BOTTOM CHORD SHALL BE DETERMINED BY THE CONTRACTOR AFTER HE COMPLETES THE SURVEY OF THE EXISTING FOUNDATION PLINTH LEVELS.

DISCLAIMER: SEE SHEET 000-0000-0-7104-00

AMENDMENT	DATE	BY	CHECKED	DATE	
R1	OCTOBER 2014 UPDATE	TLH	14/10/14	This drawing and its contents are the property of Opus International Consultants Limited. Any unauthorised employment or reproduction, in full or in part, is forbidden.	
		DESIGN	K. RASSALSKI	SS	4/12/00
		DRAWN	A.S.C.	K. MEPHAN	12/00
		REC'D	T.L. HARRIS		10/8/11
		APPROVED	S.D HEWETT		8/11



TITLE NEW ZEALAND TRANSPORT AGENCY INTELLIGENT TRANSPORT SYSTEMS STANDARD					
LCS GANTRY GENERAL LAYOUT					
STATUS	STANDARD	FILE	000-0000-0-7104-60-R1		
SCALE	AS SHOWN	PLOT DATE	22/05/15 @ 12:51	FEATURE IDENTIFIER	1/1061/370
		CODE	7104	SHEET	60
		REVISION			R1

300 mm  
200  
100  
50  
10 mm  
0

04/06/2015 13:20

GRAPHIC SCALES

k:\atms\1\_1061\_370\1\_1061\_370\_7104\_60r1.dwg - 60 ORIGINAL SHEET SIZE A1 [840x594]