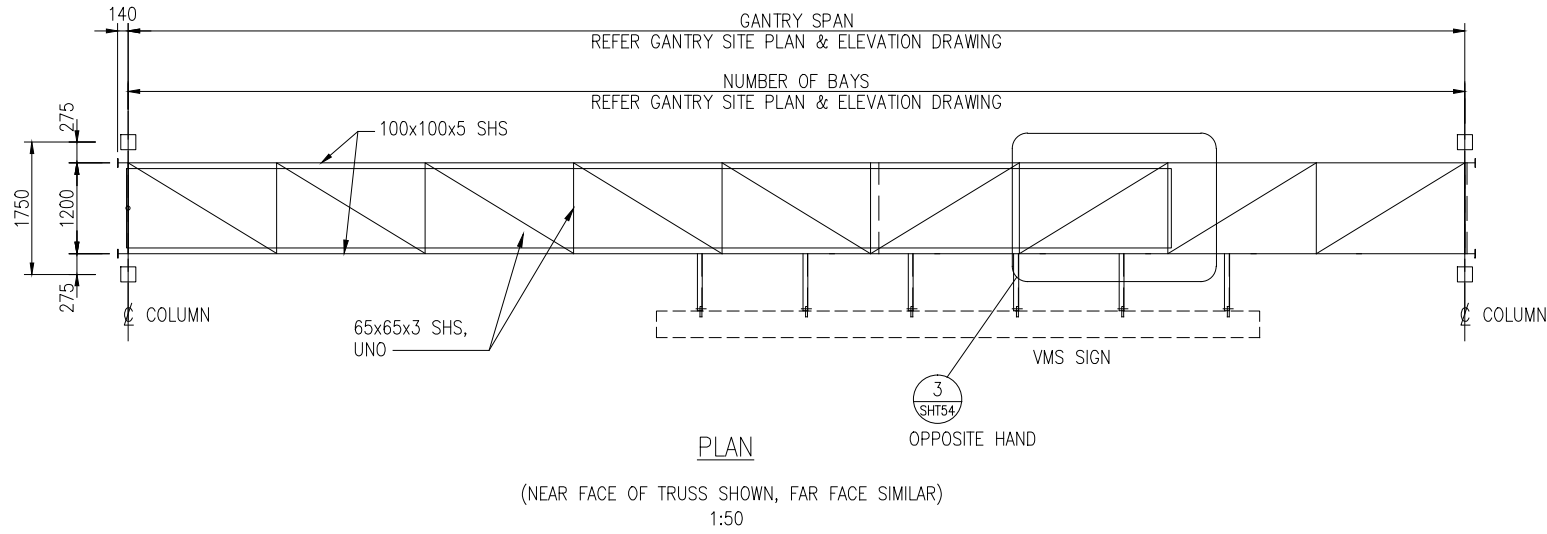
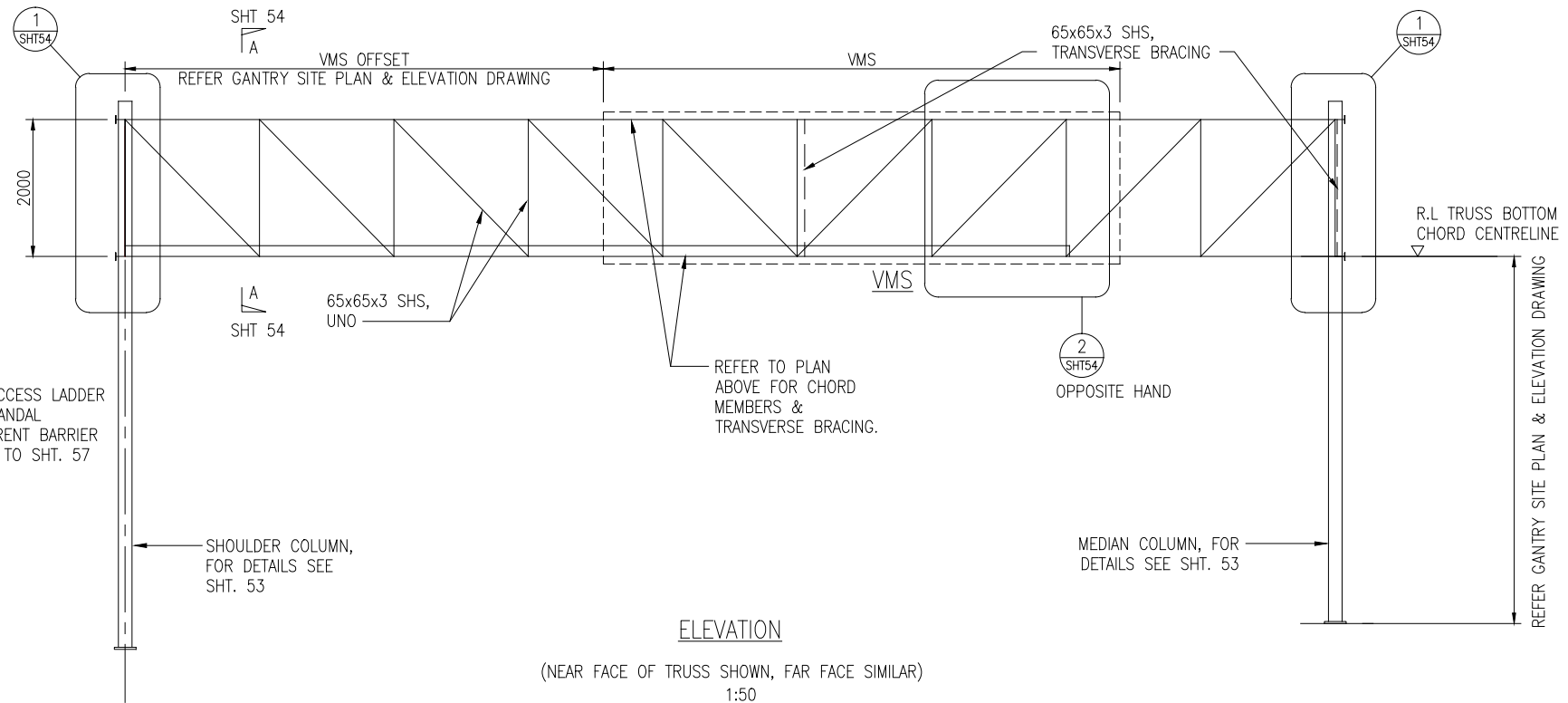
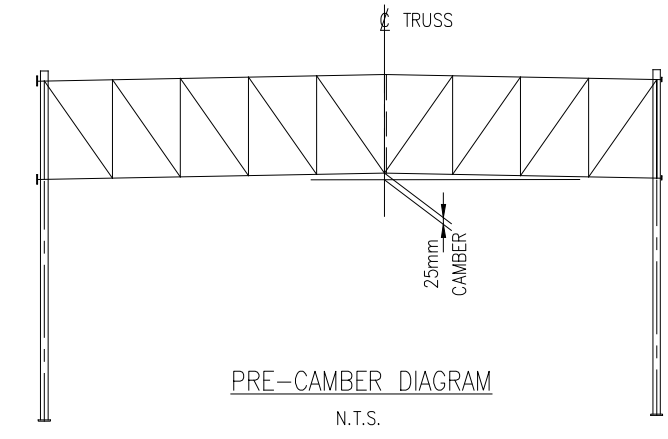


300 mm
200
100
50
10 mm
0



PLAN
(NEAR FACE OF TRUSS SHOWN, FAR FACE SIMILAR)
1:50



ELEVATION
(NEAR FACE OF TRUSS SHOWN, FAR FACE SIMILAR)
1:50

FOR ACCESS LADDER AND VANDAL DETERRENT BARRIER REFER TO SHT. 57

SHOULDER COLUMN, FOR DETAILS SEE SHT. 53

MEDIAN COLUMN, FOR DETAILS SEE SHT. 53

NOTES:

1. ALL SHS AND CHS MEMBERS IN THE BOX TRUSS SHALL BE GRADE 350, UNO.
2. THE BOX TRUSS SHALL BE GRIT BLASTED AFTER FABRICATION AND ZINC SPRAYED PER SPECIFICATIONS.
3. ALL BOLTS, NUTS AND WASHERS ETC. SHALL BE HOT DIP GALVANISED.
4. EACH BOLT TO HAVE A WASHER, NUT AND LOCKNUT.
5. THE DIMENSION BETWEEN THE BOTTOM OF THE BASEPLATE AND CENTRELINE OF THE BOX TRUSS BOTTOM CHORD SHALL BE DETERMINED BY THE CONTRACTOR AFTER HE COMPLETES THE SURVEY OF THE EXISTING FOUNDATION PLINTH LEVELS.

DISCLAIMER: SEE SHEET 000-0000-0-7104-00

	BY	CHECKED	DATE
DESIGN	I. LOH	PJW	05/04
DRAWN	A.S.C.	KVM	05/04
REC'D	T.L. HARRIS		10/8/11
APPROVED	S.D HEWETT		8/11
R2 ITS STANDARDS UPDATE	TLH	5/6/15	
R1 ITS STANDARD REVIEW	TLH	14/10/14	
AMENDMENT	APP'D	DATE	

This drawing and its contents are the property of Opus International Consultants Limited. Any unauthorised employment or reproduction, in full or in part, is forbidden.



Opus Auckland Office
PO Box 5848
Auckland, New Zealand
Tel: +64 9 355 9500
Fax: +64 9 355 9585

TITLE		NEW ZEALAND TRANSPORT AGENCY INTELLIGENT TRANSPORT SYSTEMS STANDARD			
VMS GANTRY GENERAL LAYOUT					
STATUS	STANDARD	FILE	000-0000-0-7104-52-R2		
SCALE	PLOT DATE	FEATURE IDENTIFIER	CODE	SHEET	REVISION
AS SHOWN	02/06/15 @ 11:11	1/1061/370	7104	52	R2