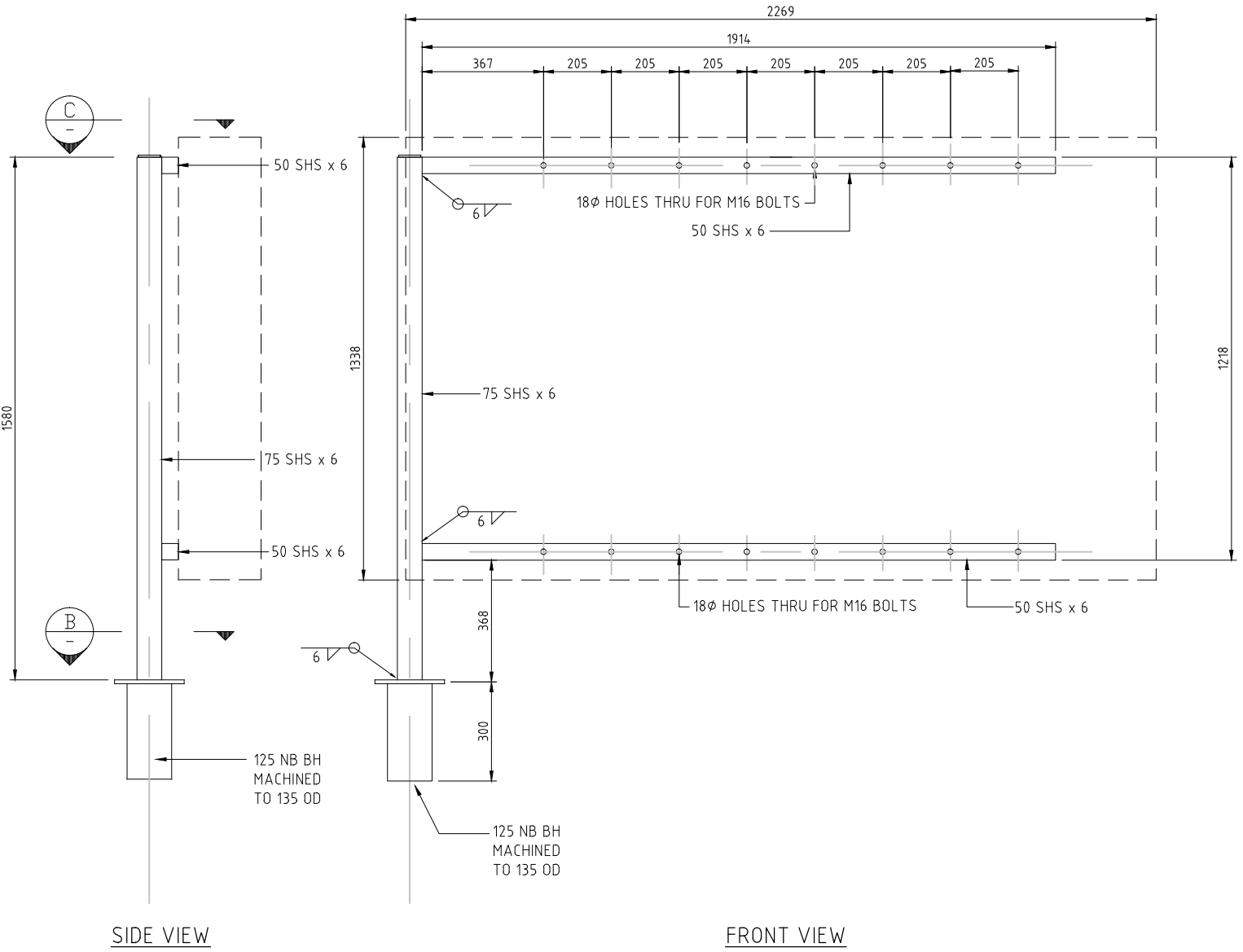


200 mm
100
50
10 mm
0



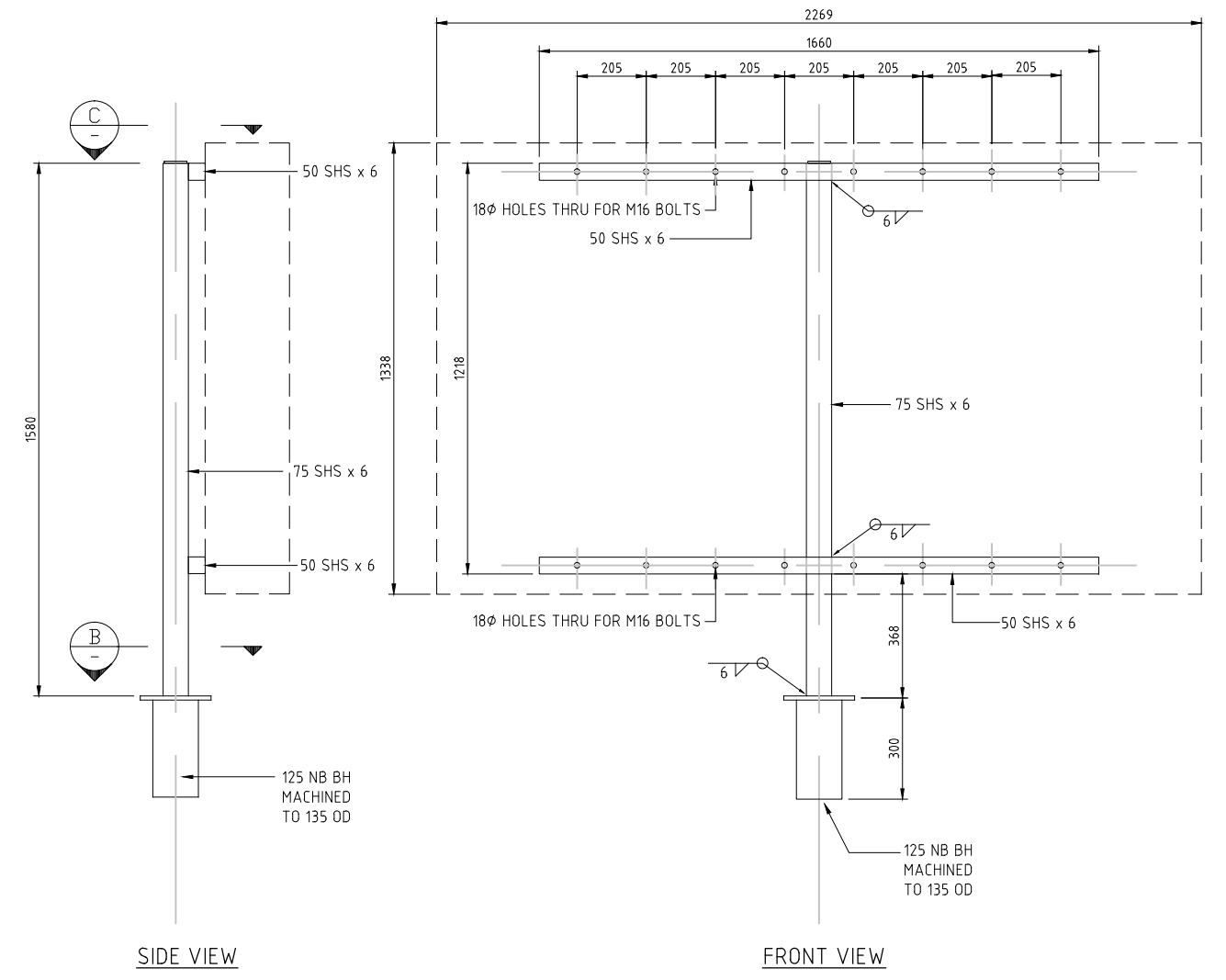
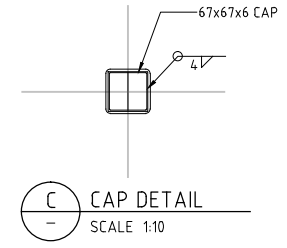
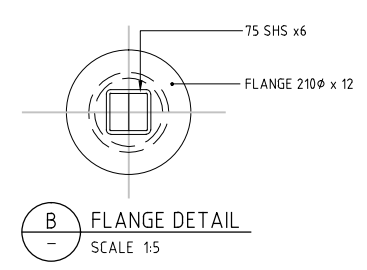
2 TYPE "F" MOUNTING BRACKET
SCALE 1:20

NOTES

- ACTUAL SIZE CONDITIONS TO BE CONFIRMED BY ENGINEER.
- BASE PLATE - MOUNTED POST SHALL BE PROVIDED WITH A STEEL BASE PLATE IN ACCORDANCE WITH THE REQUIREMENTS OF AS 1798.
- BASE PLATE SHALL BE WELDED ONTO THE POST IN SUCH A MANNER THAT THE STRENGTH OF THE JOINT IS AT LEAST EQUIVALENT TO THAT OF THE STEEL POST.
- WELDING PRACTICE SHALL COMPLY WITH THE REQUIREMENTS OF AS 1554.1
- THREADED PORTION OF ALL RAG BOLTS TO BE COATED WITH GRAPHITE GREASE OR SIMILAR BEFORE ASSEMBLY.
- ALL EXPOSED PARTS TO BE HOT DIP GALVANISED STEEL.
- ALL BOLTS, WASHERS + NUTS TO BE GALVANISED.

DESIGN PARAMETERS

- DESIGN TO AS/NZS 1107.2 2011
- IMPORTANCE LEVEL = 2
- DESIGN LIFE = 20 YEARS
- REGIONAL WIND SPEED, V100= 41 m/s (REGION A)
- TERRAIN CATEGORY 2 (FOR WIND LOAD DERIVATION)



2 TYPE "C" MOUNTING BRACKET
SCALE 1:20

DISCLAIMER: SEE SHEET 000-0000-0-7104-00

	BY	CHECKED	DATE
DESIGN	IMcM		5/15
DRAWN	JWF		5/15
RECOM'D	T.L. HARRIS		5/06/15
APPROVED	S.D. HEWETT		6/15
R1 ITS STANDARDS UPDATE	TLH	5/6/15	This drawing and its contents are the property of Opus International Consultants Limited. Any unauthorised employment or reproduction, in full or in part, is forbidden.
AMENDMENT	APP'D	DATE	



Auckland Office

PO Box 5848
Auckland, New Zealand

Tel: +64 9 355 9500
Fax: +64 9 355 9585

OPUS
INTERNATIONAL CONSULTANTS

TITLE NZ TRANSPORT AGENCY INTELLIGENT TRANSPORT SYSTEM STANDARDS STANDARD DETAILS					
RURAL HIGHWAY EJTVMS SIGN POLE MOUNTING BRACKETS					
STATUS	STANDARD	FILE	000-0000-0-7104-23-R1		
SCALE	PLOT DATE	FEATURE IDENTIFIER	CODE	SHEET	REVISION
	04/06/15 @ 10:39	1/1061/370	7104	23	R1