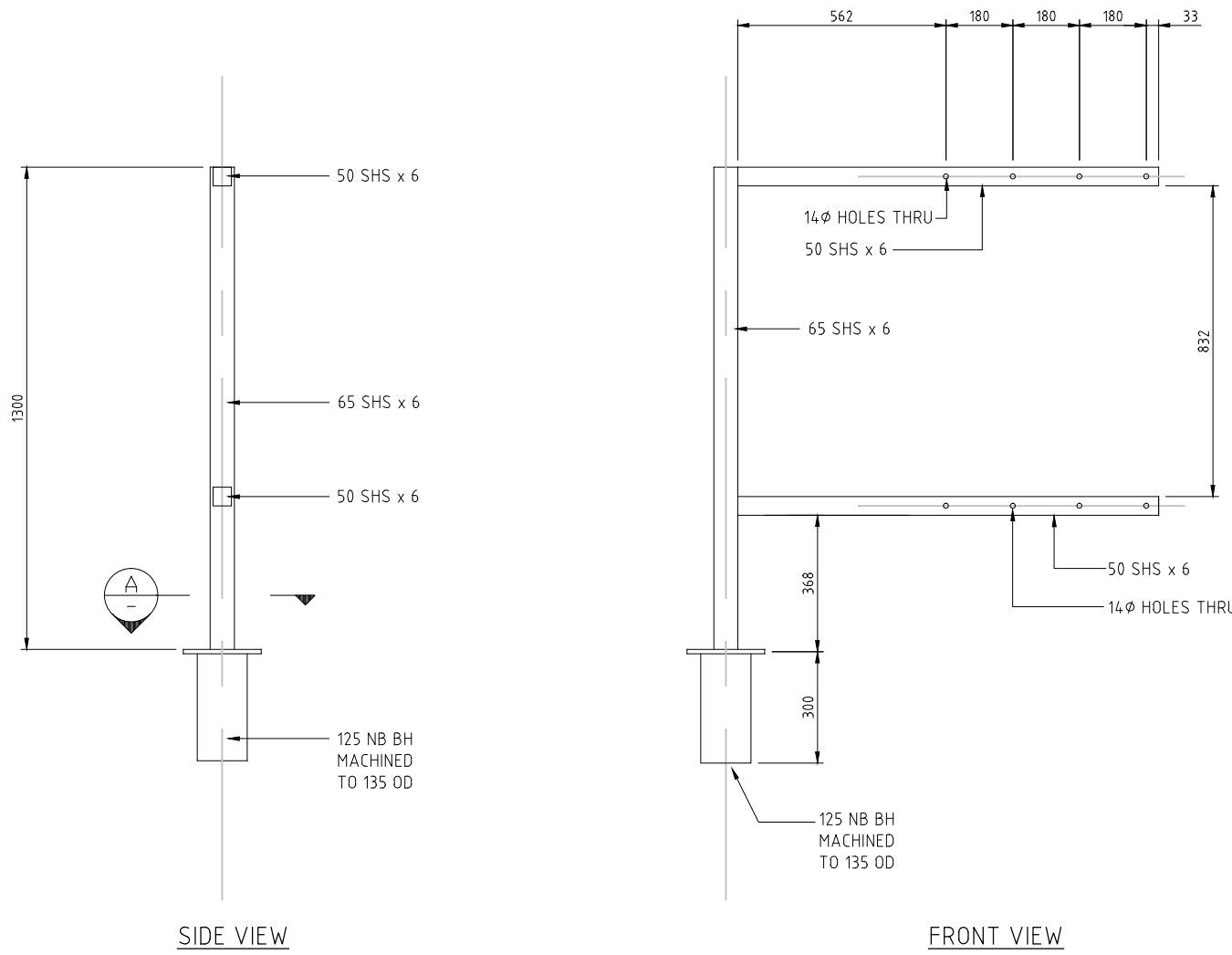


200 mm
100
50
10 mm
0



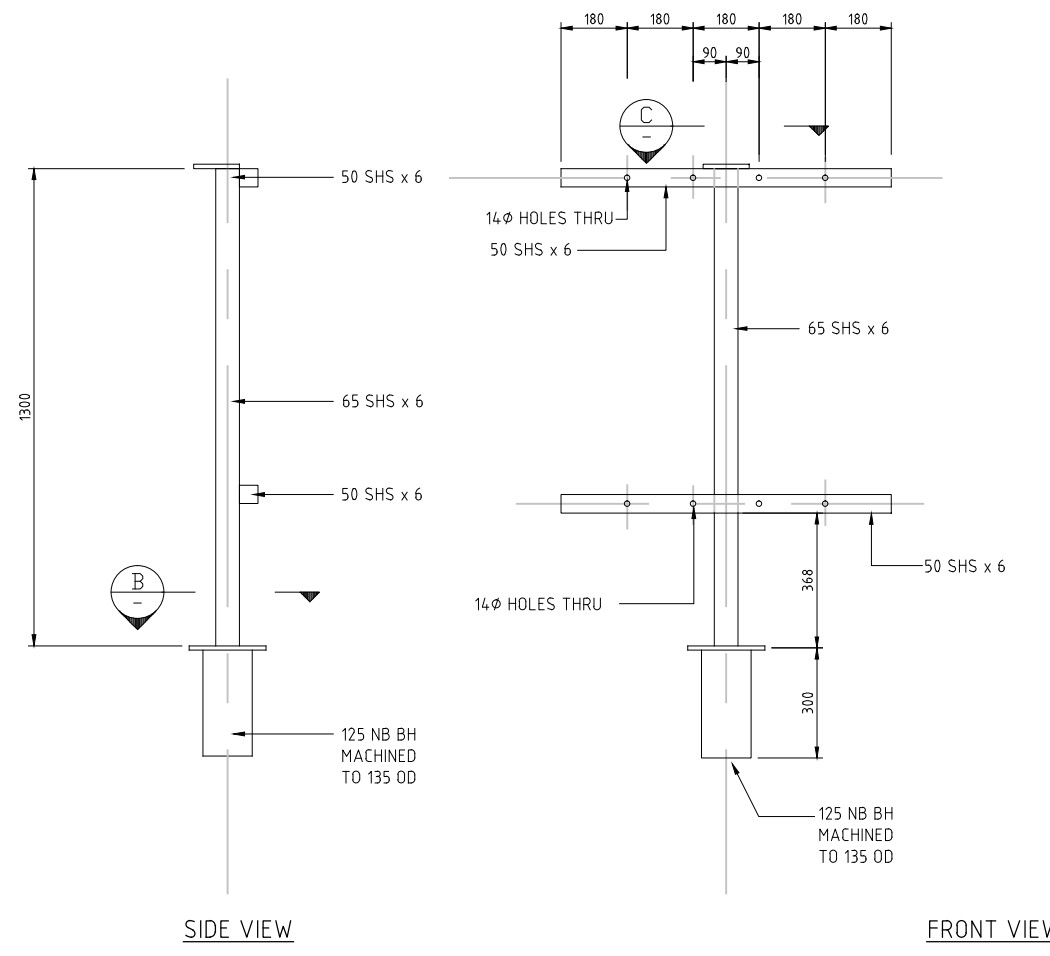
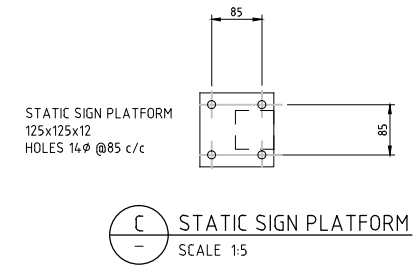
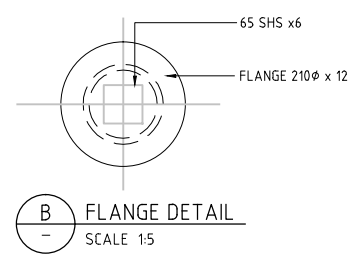
1 TYPE "F" MOUNTING BRACKET
SCALE 1:10

NOTES

- ACTUAL SIZE CONDITIONS TO BE CONFIRMED BY ENGINEER.
- BASE PLATE - MOUNTED POST SHALL BE PROVIDED WITH A STEEL BASE PLATE IN ACCORDANCE WITH THE REQUIREMENTS OF AS 1798.
- BASE PLATE SHALL BE WELDED ONTO THE POST IN SUCH A MANNER THAT THE STRENGTH OF THE JOINT IS AT LEAST EQUIVALENT TO THAT OF THE STEEL POST.
- WELDING PRACTICE SHALL COMPLY WITH THE REQUIREMENTS OF AS 1554.1
- THREADED PORTION OF ALL RAG BOLTS TO BE COATED WITH GRAPHITE GREASE OR SIMILAR BEFORE ASSEMBLY.
- ALL EXPOSED PARTS TO BE HOT DIP GALVANISED STEEL.
- ALL BOLTS, WASHERS + NUTS TO BE GALVANISED.

DESIGN PARAMETERS

- DESIGN TO AS/NZS 1107.2 2011
- IMPORTANCE LEVEL = 2
- DESIGN LIFE = 20 YEARS
- REGIONAL WIND SPEED, V100= 41 m/s (REGION A)
- TERRAIN CATEGORY 2 (FOR WIND LOAD DERIVATION)



2 TYPE "C" MOUNTING BRACKET
SCALE 1:10

DISCLAIMER: SEE SHEET 000-0000-0-7104-00

			BY	CHECKED	DATE
			DESIGN		
			DRAWN	PTA	7/11
			APPROVED	S.D. HEWETT	7/11
R2	ITS STANDARDS UPDATE	TLH	5/6/15		
R1	ITS STANDARDS REVIEW	TLH	13/2/15		
	AMENDMENT	APP'D	DATE		



OPUS
INTERNATIONAL CONSULTANTS

Auckland Office
PO Box 5848
Auckland, New Zealand
Tel: +64 9 355 9500
Fax: +64 9 355 9585

TITLE NZ TRANSPORT AGENCY INTELLIGENT TRANSPORT SYSTEM STANDARDS STANDARD DETAILS					
ADVANCE WARNING SIGN POLE MOUNTING BRACKETS					
STATUS STANDARD			FILE 000-0000-0-7104-22-R2		
SCALE	PLOT DATE	FEATURE IDENTIFIER	CODE	SHEET	REVISION
	02/06/15 @ 08:30	1/1061/370	7104	22	R2