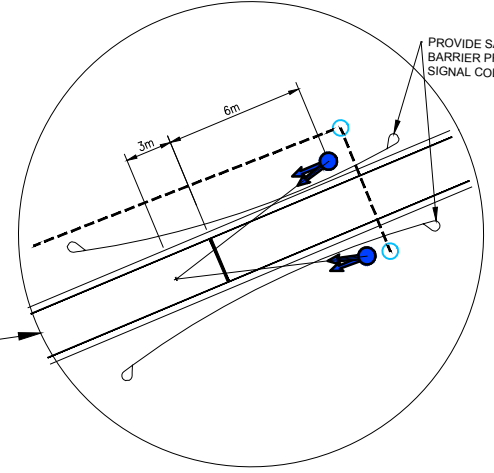
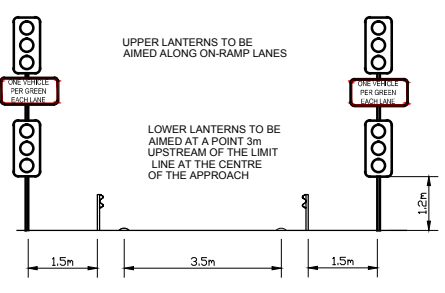
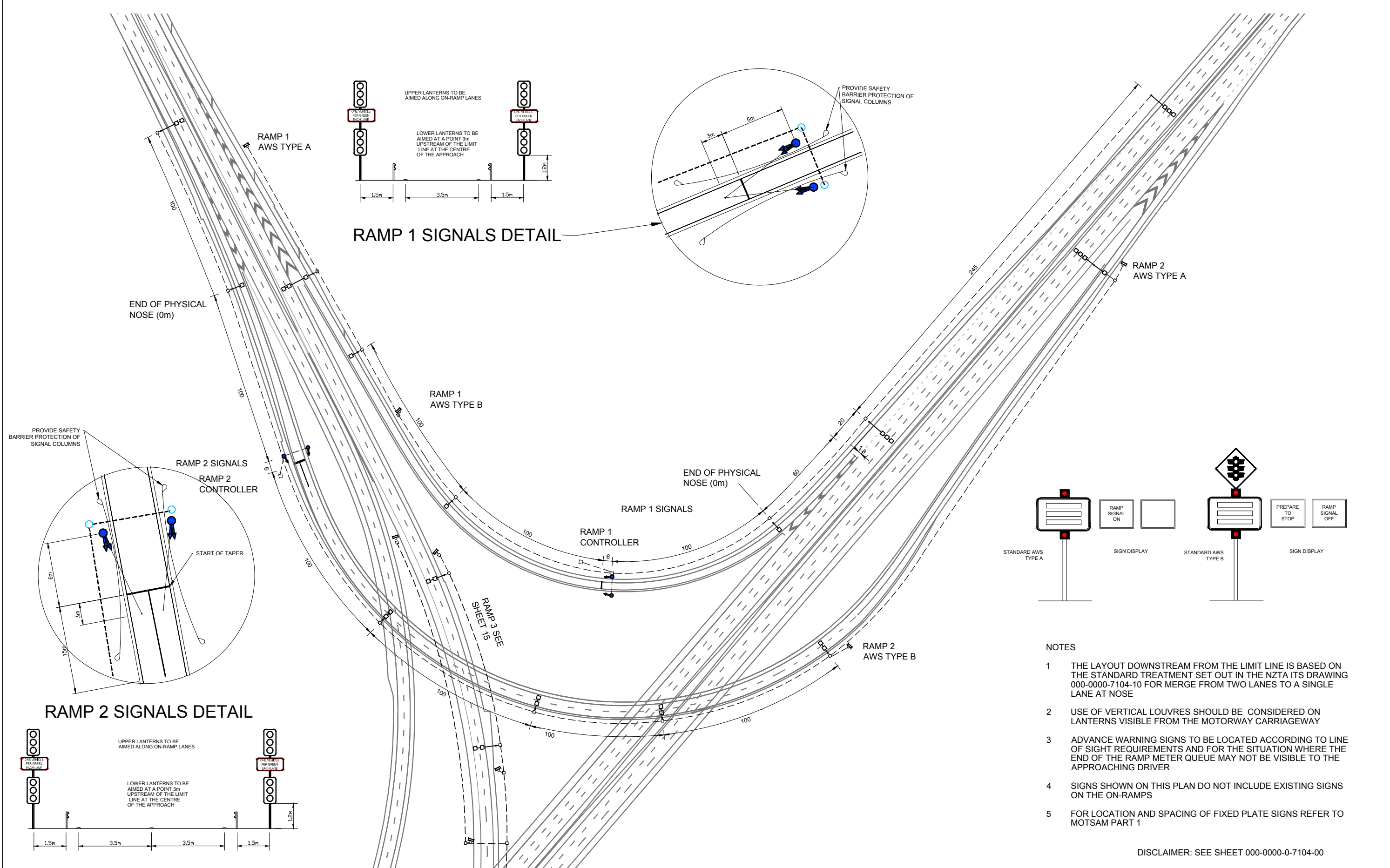
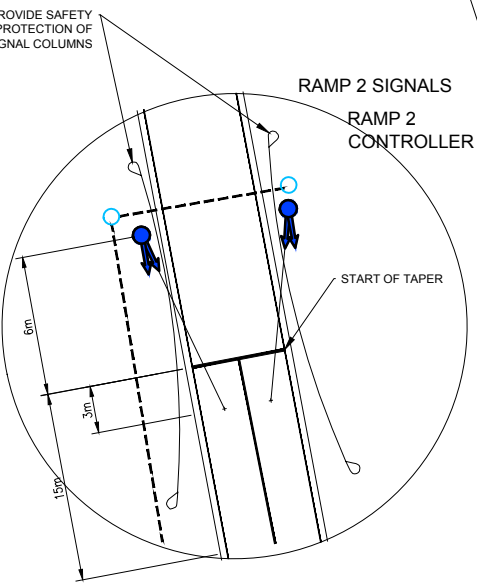


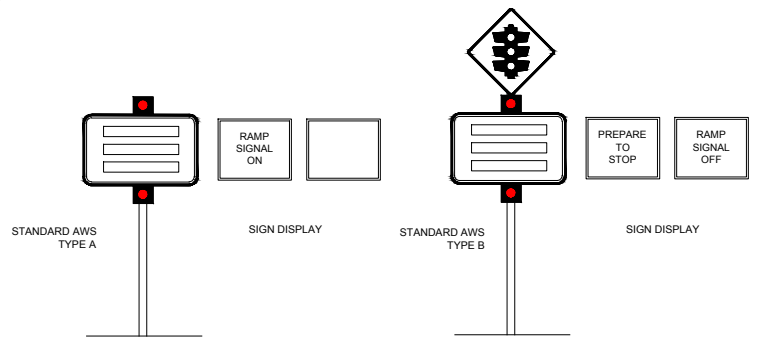
200 mm
100
50
10 mm
0



RAMP 1 SIGNALS DETAIL



RAMP 2 SIGNALS DETAIL



NOTES

- 1 THE LAYOUT DOWNSTREAM FROM THE LIMIT LINE IS BASED ON THE STANDARD TREATMENT SET OUT IN THE NZTA ITS DRAWING 000-0000-7104-10 FOR MERGE FROM TWO LANES TO A SINGLE LANE AT NOSE
- 2 USE OF VERTICAL LOUVRES SHOULD BE CONSIDERED ON LANTERNS VISIBLE FROM THE MOTORWAY CARRIAGEWAY
- 3 ADVANCE WARNING SIGNS TO BE LOCATED ACCORDING TO LINE OF SIGHT REQUIREMENTS AND FOR THE SITUATION WHERE THE END OF THE RAMP METER QUEUE MAY NOT BE VISIBLE TO THE APPROACHING DRIVER
- 4 SIGNS SHOWN ON THIS PLAN DO NOT INCLUDE EXISTING SIGNS ON THE ON-RAMPS
- 5 FOR LOCATION AND SPACING OF FIXED PLATE SIGNS REFER TO MOTSAM PART 1

DISCLAIMER: SEE SHEET 000-0000-0-7104-00

				BY	CHECKED	DATE
				DESIGN	P.T ADDY	7/11
				DRAWN	PTA	7/11
R3	ITS STANDARDS UPDATE	TLH	5/6/15	APPROVED	S.D. HEWETT	7/11
R2	ITS STANDARDS REVIEW	TLH	13/2/15			
R1	REVISED LAYOUT	BW	15/2/12			
	AMENDMENT	APP'D	DATE			

This drawing and its contents are the property of Opus International Consultants Limited. Any unauthorised employment or reproduction, in full or in part, is forbidden.



OPUS
INTERNATIONAL CONSULTANTS

Auckland Office
PO Box 5848
Auckland, New Zealand
Tel: +64 9 355 9500
Fax: +64 9 355 9585

TITLE		NZ TRANSPORT AGENCY INTELLIGENT TRANSPORT SYSTEM STANDARDS			
		RAMP SIGNAL SYSTEM MOTORWAY TO MOTORWAY SIGNAL LOCATIONS - 1			
STATUS	STANDARD	FILE	000-0000-0-7104-14-R3		
SCALE	PLOT DATE	FEATURE IDENTIFIER	CODE	SHEET	REVISION
	02/06/15 @ 08:20	1/1061/370	7104	14	R3