



Ngāruawāhia remedial and safety works



Remedial work and safety improvements continue behind the barriers.

All lanes on track for Christmas

Our goal is to return traffic to all four lanes on the Ngāruawāhia section of the Waikato Expressway by the end of the year.

Remedial work and safety improvements on the State Highway 1 site are on track for completion by mid-December. The installation of new lighting in early 2025 will then allow traffic to travel at the same 110km/h speed limit as neighbouring sections.

"We have been working with our contractor Fletcher Construction to find a way to get this job moving faster and we are very pleased with this outcome. We know the community and road users have been waiting for this for some time," says NZ Transport Agency Waka Kotahi regional manager for Infrastructure Delivery, Jo Wilton.

The programme for completion of the safety works requires 3 months of 'contraflow' where all traffic will be sharing the north or southbound lanes. This creates more working room to hasten progress as contractors can complete shoulder widening, pavement strengthening and barrier installation much more efficiently.

For approximately the next two months, all traffic will be sharing the southbound lanes. During this time, remedial work where SH1C and SH1 merge means all northbound SH1C traffic from Te

Rapa/Horotiu is turning at the Northern Interchange and go south on SH1 to turn around at Resolution Interchange and proceed north on SH1. This manoeuvre will be well sign-posted and will add about 8 minutes to journeys.

The project to bring the Ngāruawāhia section of the expressway up to 110km/h standard, and fix pavement issues, started in October 2022.

"Road users have been very patient while we get this job done. The narrow worksite with high volumes of traffic have presented a lot of challenges so we are pleased to see the end in sight to getting this stretch of SH1 up to 110km/h standard," Ms Wilton says.

The remaining remedial works to complete the project, such as planting to improve the water quality of road run-off, can be done behind the new safety barriers without traffic management. Works on the SH1C portion of the Ngāruawāhia section – on each side of the river bridge – will be done next year.

The 12.3km Ngāruawāhia section, which runs from the Horotiu to Gordonton Road interchange, opened in late 2013. It was built by Fletcher Construction under a design and construct contract. The current works are led by Fletcher Construction with the repair portion being completed under a cost-sharing arrangement with the Transport Agency.

Ngāruawāhia section detour

A detour is needed while remedial work is under way where SH1C and SH1 merge. All northbound SH1C traffic from Te Rapa/Horotiu is turning at the Northern Interchange and heading south on SH1 to turn around at Resolution Interchange and proceed north on SH1. This 24-hour detour runs from 6 September for about two months. The detour will add about 8 minutes to journeys.



Detour for northbound traffic on SH1C

Starts 6 September for about 2 months.

Off SH1C at Lake Rd off-ramp > over expressway and on to southbound on-ramp > turnaround at Resolution Interchange to proceed north on SH1.

What's left to do

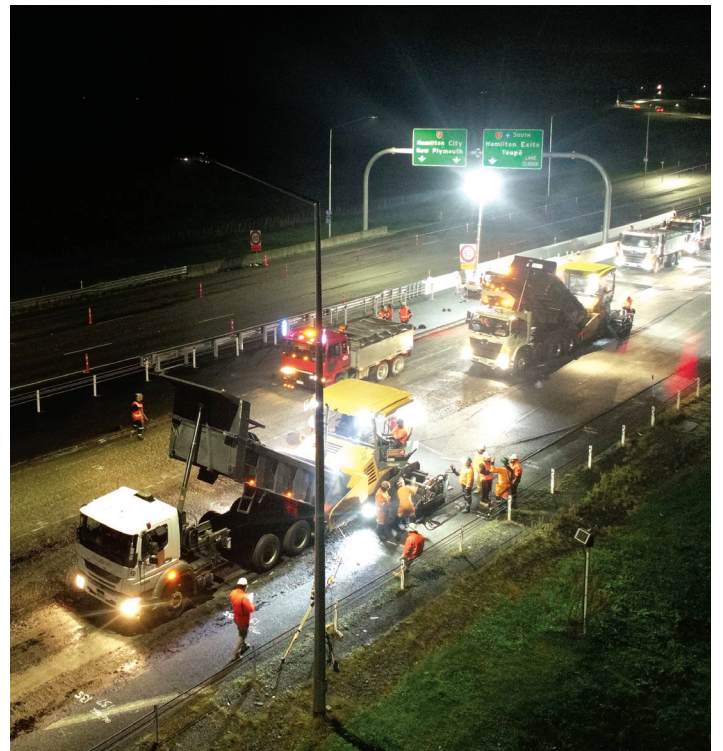
Contractors are working to bring the Ngāruawāhia section of the Waikato Expressway up to the same standard as its neighbouring sections which operate safely with a 110km/h speed limit.

On-going remedial work includes:

- Reshaping and hardening the median area – to limit moisture entering the pavement and prevent further failures
- Drainage improvements
- Resurfacing, depending on the existing pavement condition
- Raising the pavement height to improve resilience to high ground water
- A final, continuous asphalt surface will complete the repair works, replacing the temporary chipseal and asphalt surfaces which have been in place during earlier repairs.

The safety improvements needed to get to 110km/h standard include:

- Shoulder widening
- Continuous side barriers
- Upgrading some barriers
- Extra maintenance and turnaround bays for emergency services
- Relocating some lighting.



A big thank you from us. On behalf of NZ Transport Agency and Fletcher Construction, thank you to road users and nearby residents for your patience and understanding while we get this important work completed.



Got a question?

Fletcher Construction

027 274 7632

Ganesh Ramar

Senior Project Engineer, Higgins Contractors

027 343 7549