

TREC recovery update



Transport
Rebuild
East Coast



December 2024

Tēnā koe,

Thank you for your patience as Transport Rebuild East Coast (TREC) teams continue the post Cyclone Gabrielle recovery work on State Highway 38 (SH38). Below is information on where we're at, and what's still to come.

What's been repaired

The team has made steady progress repairing the underslips typical of the kind of damage left behind by Cyclone Gabrielle. We have completed six recovery projects along the road, including the sites shown here.

Waikaretāheke River Underslip 3 - completed April 2024



Waikaretāheke River Underslip 4 - completed February 2024



Piripaua Scour - completed October 2024

- completed October 2024



How we repair underslips along SH38

Underslips occur on the downhill side of a road. They pose a risk to the road above if not addressed.

To start an underslip repair, we first dig a track down to the bottom of the underslip so the team can access the site and remove the old slip material.

Once the material is gone, geofabric cloth is installed against the cleared slope. Geofabric cloth prevents materials from mixing while allowing water to pass through it without washing the materials away. We then use aggregate (a mixture of different types and sizes of crushed rocks) to build the bank back.

Another layer of the geofabric cloth is laid down to keep the aggregate in place. Rock armour is placed on top of the geofabric to protect the aggregates from being washed away by flooding. This repair method helps stabilise the ground under the road and protect the bank from future erosion.

The reinstated bank is then hydroseeded. Hydroseeding is when we spray a slurry of seeds, mulch, and fertiliser onto steep slopes to provide stability as well as helping to control dust, erosion, and sediment runoff.



Local contractor QRS and TREC tackling a complex 8 metre high underslip site next to Waiau River. They're using the same buttress repair method used at other underslip repairs along SH38.

Waiau River Underslip - completed September 2024



South of Mangakino Bridge Scour - completed October 2024





TREC Recovery Projects



Map Key

- Completed
- In Design

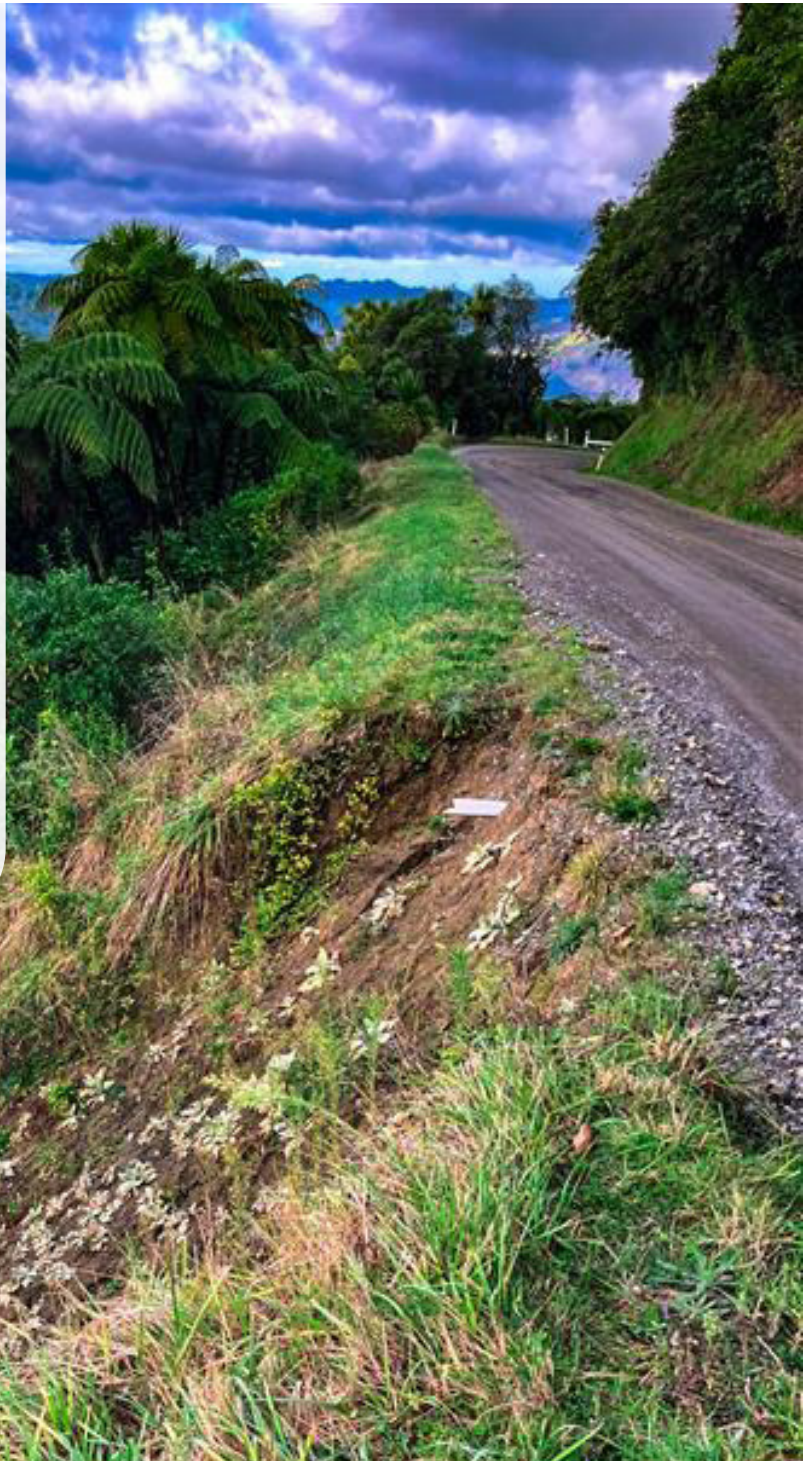
Indicative map only
Version 23 October 2024

Remaining recovery work on SH38

There are six recovery projects currently in design. These are:

- South of Kaitawa Underslips (pictured)
- Tarapatiki Underslip
- Rosie Bay Underslip
- Whatapo Bay Underslip 1
- Whatapo Bay Underslip 2
- Whatapo Bay Underslip 3

We are working with Ngāi Tūhoe on these designs and expect to have them ready next year. We will keep you updated on progress.



Whakapā mai ■ Get in touch

Email us info@trec.nz

Website nzta.govt.nz/trec

LinkedIn [linkedin.com/company/east-coast-trec](https://www.linkedin.com/company/east-coast-trec)

Facebook [facebook.com/nztahbg](https://www.facebook.com/nztahbg)

Call us 0800 80 TREC (0800 80 8732)

If you spot an issue at a work site after hours, call 0800 4 HIGHWAYS (0800 444 449).

Stay up to date

Scan the QR code or go to the URL to sign up to receive these regular newsletters:



TREC Pānuī
(general newsletter)
bit.ly/3WI4kaQ



TREC Hawke's Bay
(regional update)
bit.ly/3WK9HWO