



Tauranga Eastern Link

Construction update

Issue 18 August 2013

Progress to date

Maketu Road bridge takes shape

It took two days only to lift 21 concrete beams into place to create the superstructure for the Maketu Road bridge. Each beam weighed between 27 to 30 tonne and were 21 metres in length.



Above: The first beam being lifted.

Since Maketu Road was detoured in February 2013 to allow construction of the bridge to take place, a range of activities have been occurring including piling, construction of the bridge columns, abutments and the placement of large concrete panels in front of the bridge embankment.

The bridge deck will now be constructed, and soon the earthworks and pavement teams will commence the re-construction of Maketu Road, which will be re-opened later in 2013.

Below: One of the beams lifted into it's final position.



Swales, box-cuts and pavements



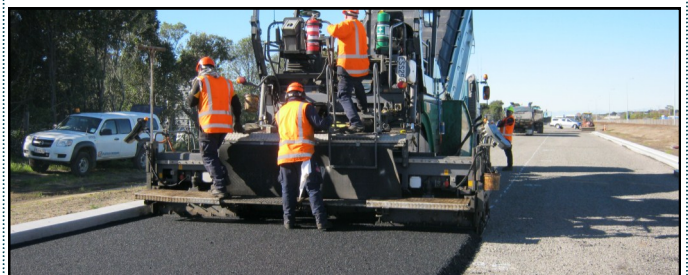
The earthwork and pavement crews are busy shaping the TEL alignment which is starting look more like a highway. In areas where the pre-load has been removed and the desired compaction has been reached, road side swales (see image above) are being shaped, topsoiled and grassed.

The next stage is box-cuts, which is grading the surface to a pre-determined level (see image below) then rolling with



a compaction roller, giving a smooth firm surface.

The pavement crews then lay aggregate to form an armouring layer. This layer is then mixed in with the sand and cement to form a stiff and dense sub-base. The final stage is either structural asphalt (see image below) or a foamed bitumen stabilised base course pavement layer.



Upcoming traffic changes

Te Maunga—State Highway 2 traffic changes Sunday 4 August and Monday 5 August

From **Monday 5 August** all north and southbound traffic will be moved on to the new section of road (approximately 1km in length) that has been constructed adjacent to the railway. This is to allow construction to start on the southbound lanes and completion of Te Maunga lane.

For this switch to occur, work will be carried out from Sunday afternoon through the night until early Monday morning. At times, temporary traffic management will be in place on State Highway 2. All motorists and Te Maunga SH2 residents are asked to take extra care and to follow any detours in the area during this time. This work is very weather dependent and may be carried out on the next suitable day.



Above New road layout changes at the Te Maunga roundabout

New residential lanes to open

Coinciding with the traffic switch, two new residential access lanes—Te Maunga Lane and Oceandowns Way—will open as all direct access onto and off State Highway 2 by residents will be closed.

All residents and visitors will be required to use the new access lanes from Monday 5 August.

Below: New residential access lanes and road layout changes.

