

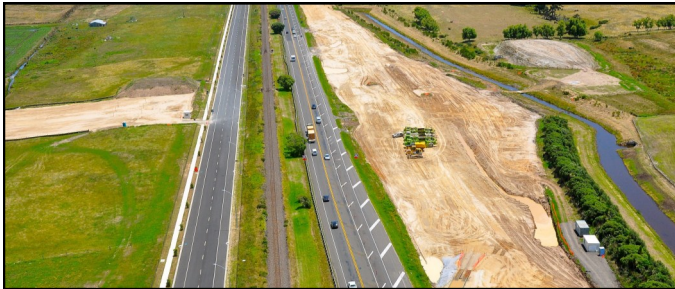


Tauranga Eastern Link

Construction update

Issue 14 December 2012

Progress over the last twelve months



December 2011



December 2012

Mangatawa Interchange



December 2011



December 2012

State Highway 2/Domain Road Interchange



December 2011



December 2012

Kaituna River bridge



December 2011



December 2012

Maketu Road and East Coast Main Trunk rail bridge



Forward programme for January 2013

Zone A — Te Maunga to Domain Road

The Te Maunga area will see an increase of activity with the construction of two new residential access lanes.

Key activities will include:

- The construction of two new residential access lanes, Te Maunga Lane and Oceandowns Way commence.
- The installation of a new stormwater system continues in the old rail yard area and on Truman Lane.
- Piling commences at the Mangatawa interchange adjacent to Truman Lane on Pier D.
- Placement of fill and pre-load material for a new driveway off Domain Road.

Traffic management

Domain Road and Tara Road

- 50km/h temporary speed restriction.

State Highway 2

- An 80km/h temporary speed restriction from Te Maunga to Domain Road.
- State Highway 2 slip lane to Tauranga closed with traffic diverted via the Domain Road roundabout.

Bruce Road

- Left in and left out only.

Zone B — Domain Road to Kaituna River

Parton Road traffic will be switched onto a long term temporary diversion road.

Key activities will include:

- Ground improvements for the Parton Road overbridge commences with the construction of stone columns.
- Removal of pre-load material from the Kaituna River west embankment.
- The construction of a stock underpass commences.
- Placement of the Kaituna River bridge concrete deck panels continue.

Traffic management

Bell Road

- 50km/h temporary speed restriction.

Parton Road—long term temporary diversion

- Traffic will be switched to a temporary diversion with a 50km/h speed restriction.

Forward programme for January 2013



Zone C — Kaituna River to Paengaroa

Construction activity increases at the Maketu Road bridge site.

Key activities will include the commencement of:

- The lowering of Maketu Road and the pavement construction for the new Te Tumu Road diversion.
- Placement of sheet piles for Mowing Boat Culvert B.
- The earthworks operation for the new Paengaroa roundabout.
- The ECMT bridge column construction.
- Placement of the Kaituna River bridge steel sections.

And the continuation of:

- The ECMT south keystone wall construction.
- Placement of material between Kaituna River bridge and the tephra cut.

Traffic management

Pah Road

- Two 50km/h temporary speed restrictions, with all TEL construction traffic required to give way to Pah Road traffic.

Maketu Road—long term works

- Maketu Road will be reduced to a single lane with a manual stop/go and traffic signals to control traffic. A 30km/h speed restriction will be in place.
- In February, a 300 metre section of Maketu Road will be temporarily closed with traffic diverted onto the new Te Tumu Road diversion and Te Tumu Road.



Tauranga Eastern Link

Christmas break



The TEL construction site and Information Centre will close on Friday 21 December, with staff returning on 7 January 2013. If you have any queries during the Christmas break, please call 0800 835 463 or 07 542 9900.

The Tauranga Eastern Link team would like to wish everyone a safe and happy Christmas and New Year.