



# Tauranga Eastern Link

## Construction update

Issue 12 September 2012

### Progress to date

#### Domain Road interchange activity re-commences

As part of a staged plan, some sections of pre-load and surcharge material are now being removed after a period of approximately nine months settlement, allowing the next key stage of construction to commence. The material being removed will be utilised as structural fill and pre-load on other areas of the project. The remaining pre-load material in this area will be removed at a later date to allow further settlement to occur.

The next stage of construction will see the commencement of the piling for the Domain Road interchange bridges. In total 50 piles will be driven to depths of up to 50 metres. Construction of a temporary roundabout and road diversion will get underway in preparation for a future traffic switch in 2013, to allow fill to be placed on sections of the existing Domain Road and State Highway 2.

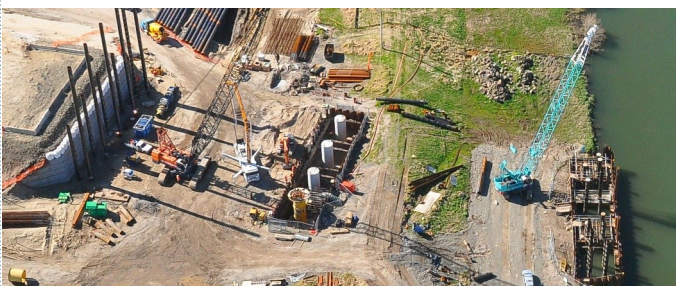


#### Kaituna River bridge progresses

The image below shows three different stages of work occurring on the western side of the river.

On the left is the bridge embankment and piles for Abutment A. These piles have now been driven to finished depth and the abutment construction is underway. In the centre is Pier B with four columns completed. At the rivers edge is Pier C, which currently has the pile caps and columns under construction. The future Bell Road re-alignment will run between Abutment A and Pier B.

On the eastern side of the river, piling has commenced on Pier D at the rivers edge and later this month piling at Abutment E next to the bridge embankment commences.



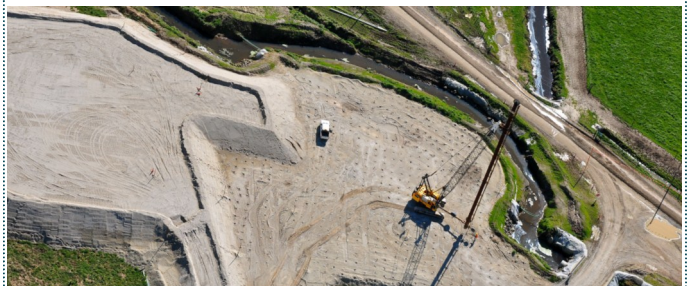
#### Mowing boat culvert ground improvements

Two mowing boat culverts are being constructed on Pah Road, but first ground improvements have to be completed. Both culverts required a total of 49,125 lineal metres of wick drains to be installed and one culvert required 3,000 lineal metres of stone columns to be installed, to strengthen the ground beneath.

Pre-load material is being placed on each area and once completed will settle for approximately nine months.

Another mowing boat culvert is to be constructed between the two Pah Roads, however ground improvements are not required due to the ground conditions at this location.

*Below: Mowing boat culvert B wick drains and some pre-load material in place.*



## Forward programme for September



*Zone A—Pre-load rubble adjacent to State Highway 2*

### Zone A — Te Maunga to Domain Road

Activity at the old rail yard at Te Maunga will continue with construction of the new northbound lanes.

Key activities this month will include:

- Commencement of the piling operation at the Domain Road Interchange Bridge A site.
- Placement of fill and pre-load material adjacent to Domain Road.
- Placement of fill and pre-load material between the new Mangatawa Interchange and Domain Road, and at the Bruce Road intersection.
- Commencement of pavement construction in the old rail yard.

#### Traffic management

##### Domain Road and Tara Road

- 50km/h temporary speed restriction.

##### State Highway 2

- An 80km/h temporary speed restriction from Te Maunga to Domain Road.
- State Highway 2 slip lane to Tauranga closed with traffic diverted via the Domain Road roundabout.

##### Bruce Road

- 30km/h temporary speed restriction and left turn in and left turn out only.

*Right:  
Zone B—  
Parton Road  
bridge  
embankment*



## Forward programme for September

### Zone B — Domain Road to Kaituna River

Construction of the bridge piers will be the main focus for the Kaituna River bridge.

Key activities this month will include:

- Construction of a temporary diversion road on Parton Road.
- Placement of topsoil to close out finished batter slopes and swales.
- Placement of fill and pre-load material between Parton Road and Domain Road.
- Construction of the pile caps and columns at Pier C and continuation of abutment construction.

#### Traffic management

##### Bell Road

- 50km/h temporary speed restriction.

##### Parton Road

- 30km/h temporary speed restriction and manual stop/go. Minimal delays are expected.

### Zone C — Kaituna River to Paengaroa

The piling operation on the eastern side of the Kaituna River continues.

Key activities this month will include:

- Commencement of the ECMT keystone wall.
- Placement of pre-load material at Mowing Boat Culvert D on Pah Road.
- Completion of the current imported fill operation between Pah Road and Te Tumu Road.
- Continuation of piling at the Kaituna River bridge eastern site.

#### Traffic management

##### Pah Road

- Two 50km/h temporary speed restrictions.

*Below: Zone C—ECMT rail bridge*

