



Tauranga Eastern Link

Construction update

Issue 11 August 2012

Progress to date



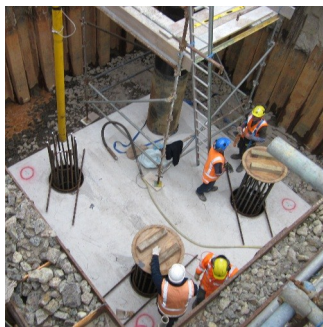
New roadside batters, swales and a noise bund take shape

Top: July 2011 Bottom: July 2012

Whilst some areas of the TEL are highly visible and the progress can easily be seen, a large portion of the work is occurring well out of sight. In the section between Parton Road and the Kaituna River, the earthworks crew have been busy reshaping the landscape and laying over 15,000m³ of topsoil on finished batter slopes, in drainage swales and on a future noise bund. The photographs above show the change that has taken place at one section in this area in the past twelve months since the earthworks operation commenced in June last year.

The first Kaituna River bridge pier well underway

Sixteen piles for the first bridge pier, Pier B, have been driven to their finished depth of 53 metres and now the pile caps and columns have been constructed. Each pile has had steel reinforcing and 17m³ (three truck loads) of concrete placed inside, then over groupings of four piles, pile caps and columns were constructed with 35m³ (seven truck loads) of concrete poured for each pile cap and a further 19m³ (four truck loads) of concrete poured for each column. The pier columns will be up to six metres in height and when completed, the pile cap and a section of column will be below ground level.



Forward programme for August



Zone A—Tephra encapsulation on the pumice fill

Zone A — Te Maunga to Domain Road

Activity increases to the north of (and at) the Bruce Road intersection with the delivery and placement of foundation fill and pre-load material.

Key activities this month will include:

- Placement of fill and pre-load material adjacent to Domain Road.
- Installation of the new stormwater system at Te Maunga.
- Placement of fill and pre-load material between the new Mangatawa Interchange and Domain Road and at the Bruce Road intersection.

Traffic management

Domain Road and Tara Road

- 50km/h temporary speed restriction.

State Highway 2

- An 80km/h temporary speed restriction from Te Maunga to Domain Road.
- State Highway 2 slip lane to Tauranga closed with traffic diverted via the Domain Road roundabout.

Bruce Road

- 30km/h temporary speed restriction and left turn in and left turn out only.

State Highway 2— Bruce Road to Domain Road

We thank all road users of State Highway 2 for their patience as we carry out repairs on the existing road surface, which is cracking due to the adjacent fill material being placed on the TEL.

Recent wet weather has only exacerbated the problem and repairs will continue as required to ensure the road remains open.

Forward programme for August

Zone B — Domain Road to Kaituna River

Parton Road will see additional activity with the re-location of Telecom services.

Key activities this month will include:

- Placement of pre-load material between Parton Road and the sand cut and Parton Road to Domain Road.
- Placement of topsoil to close out finished batter slopes and swales.
- Piling at the Kaituna River bridge site at Pier C and Abutment A.
- Construction of the pile caps at Pier B

Traffic management

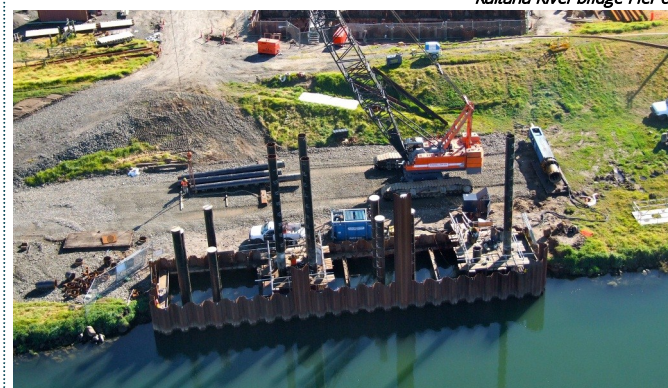
Bell Road

- 50km/h temporary speed restriction, with TEL construction traffic required to give way to all Bell Road traffic.

Parton Road

- 30km/h temporary speed restriction (as required).
- Manual stop/go (as required) with minimal delays expected.

Kaituna River bridge Pier C



Zone C — Kaituna River to Paengaroa

The piling operation on the eastern side of the Kaituna River will commence this month.

Key activities this month will include:

- ECMT bridge piling operation.
- Placement of pre-load material at Mowing Boat Culvert B on Pah Road.
- Placement of fill between Pah Road and Te Tumu Road.
- Piling at the Kaituna River bridge eastern site.

Traffic management

Pah Road

- Two 50km/h temporary speed restrictions.