



Tauranga Eastern Link

Construction update

May 2011 Issue 2

Progress to date

Kaituna River construction access completed

Access to both sides of the Kaituna River has now been completed. Recent wet weather proved challenging but now a 23 metre wide, 1.6km long haul road gives access to the east side of the river from Pah Road. A smaller existing access way from Bell Road has been upgraded giving access to the west side of the river.



The haul road reaches the Kaituna River from Pah Road

Design team full steam ahead

Since the contract was awarded in November 2010, our design team has been working on completing the detailed design.

Made up from our four design partners URS, Opus, Peters and Cheung and Bartley Consultants, there are over 70 staff covering all aspects of the TEL design such as drainage, structures, pavements, geometrics for the ground conditions, landscaping and lighting. To date 70% of the final design has been completed.



Design team members discussing the Mangatawa bridge

Progress to date cont....



A sand blanket under construction at Domain Road

Domain Road intersection changes

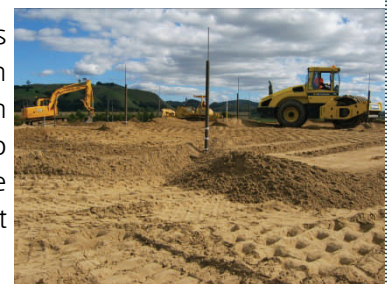
Construction of erosion and sediment controls have been carried out to ensure untreated water doesn't enter the existing drainage system.

A sand blanket with a geotech fabric base has been installed in preparation for the installation of wick drains. Together they will drain water from the ground decreasing the amount of settlement time required. The sand blanket also provides a stable working platform for two cranes which will be used to install the wick drains.

Due to road layout changes in this area, a temporary speed restriction of 50km/h is now in place. Protection barriers and sight screens are also being installed.

Trial embankments providing excellent results

Three trial embankments have now been completed with monitoring set to continue, gauging the settlement of the peat below.



Results from the Tara Parton Road trial embankment and Pah Road trial embankments show settlement of 1.2 metres and 0.5 metres respectively, meeting the designers expectations of how the peat would perform when preloaded with fill material.

Construction of the fourth trial embankment at the Kaituna River has commenced.

Forward programme for June

Zone A—Te Maunga to Domain Road

Visual construction activity will increase, especially at the Domain Road intersection with the arrival of two 55 tonne cranes, that will be used to install wick drains.

Key activities will include:

- Ground improvements at Domain Road with the installation of over 23,000 wick drains.
- Placement of fill and pre-load material.
- Continuation of fencing and service relocations.
- Construction of the Domain Road trial embankment.
- Commencement of drainage work to at Te Maunga.
- Continuation of house removals.

Traffic management

Domain Road—Long term temporary traffic management will be installed as follows:

- 50km/h temporary speed restriction.
- SH2 slip lane to Tauranga closed and traffic diverted via the Domain Road roundabout.
- Approach lane widths narrowed.
- Concrete protection barriers and sight screens installed.

Road users are asked to take care in this area and minor delays could be experienced.



Domain Road lane re-alignment underway

Zone B— Domain Road to Kaituna River

The main focus is construction of the haul road to enable sand from within the TEL designation to be hauled to various areas for fill.

Key activities will include:

- Fencing the TEL boundary from neighbouring land.
- Two rigs will be installing over 1300 stone columns to a depth of up to 14 metres, to strengthen the ground beneath for the bridge abutments on the west side of the Kaituna River.
- Construction of the haul road with work commencing between Parton Road and Bell Road.
- Installing temporary culverts for the haul road.
- Installing of erosion and sediment controls.

Forward programme for June cont..



Stone column trials undertaken at the TEL Project Office, Tara Road

Zone C—Kaituna River to Paengaroa

The Kaituna River bridge ground improvements commence on the eastern side of the river, with one rig installing stone columns.

Key activities will include:

- Commencement of kiwifruit orchard reconfigurations and shelter belt installation.
- Installing over 800 stone columns to a depth up to 15.5 metres, to strengthen the ground beneath for the bridge abutments on the east side of the Kaituna River.
- Continuation of construction of Kaituna River trial embankment.

Last word

ZERO HARM
is our safety target

| | |
|--------------------|-----|
| Days worked | 188 |
| Lost time injuries | 0 |
| Medical treatments | 0 |

For the duration of the project, the Fulton Hogan HEB Construction Alliance's safety goal is zero harm to all project employees and sub-contractors.

To achieve this goal, many procedures are in place which include a comprehensive project induction and drug and alcohol testing, including testing after any incident and random testing, plus all staff are empowered to stop any task, at any time, should they feel it is unsafe.

Daily pre-start meetings are held prior to any job commencing, to ensure hazards and risks are identified and controlled. Weekly toolbox meetings allow staff the opportunity to discuss any safety issues or concerns, and appropriate training undertaken as required.

Our minimum PPE (personal protection equipment) is hard hats, safety glasses, hi-vis vests and lace-up steel cap boots.