



Maruia Springs to Reefton speed review



Safer speeds are safer for everyone

Feedback is open from 10 November
until 5pm 24 November 2021

Our vision is an Aotearoa where no one is killed or seriously injured on our roads.

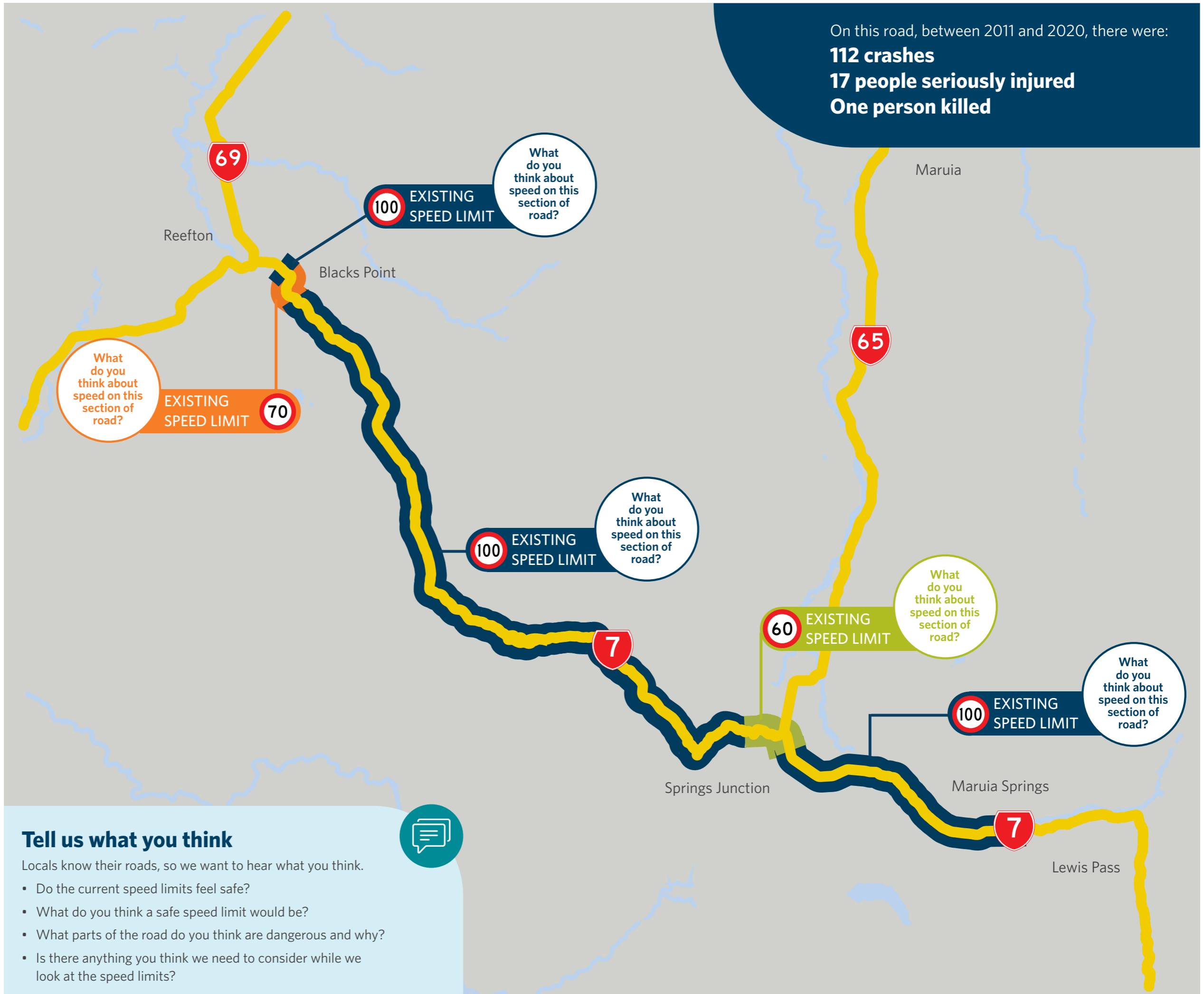
There have been a high number of crashes on State Highway 7 between Maruia Springs and Reefton and some locals feel that speeds on parts of this road feel too high to be safe. We want to make sure that speeds are safe and right for this road, so we're reviewing the current speed limits.

Even when speed doesn't cause the crash, it's what will most likely determine whether anyone is killed, injured, or walks away unharmed. When speeds are safe and appropriate for the road, simple mistakes are less likely to end in tragedy.

What we know

- Implementing safer speed limits is a key part of New Zealand's road safety strategy, Road to Zero 2020-30. The Safe System approach which acknowledges even responsible people sometimes make mistakes when driving, aims to minimise the impact of those errors. Any proposal to drop speed limits is driven by the need to improve safety and reduce harm for everyone who uses our roads.
- The safety features of a road and the speed vehicles travel on it influence both the risk of a crash and whether it is survivable.
- Speed limits need to reflect the risk of the road. The stretch of road between Maruia Springs and Reefton has sweeping bends, narrow shoulders and hazards including power poles, dense vegetation, waterways and trees on the narrow shoulders. We know many of the current speed limits along State Highway 7 are not safe for the way people use the road.
- This road is used for everything from commuting, to freight, to tourism. There are a variety of road users between Maruia Springs and Reefton. Reducing the speed means people walking, cycling, and driving along this road will be kept safer.
- This section of road is a popular route for trucks and motorcyclists. We are reviewing the speed limits to ensure truck drivers and motorcyclists feel comfortable pulling out into traffic without putting themselves or anyone else at risk.
- We've heard concerns from people in the Black Points community that speed limits through their town feel too high to be safe.

Through the speed review process, we will work with the local community to gather, share information and collaborate to ensure we understand your concerns.



HOW TO HAVE YOUR SAY

To provide feedback:



Visit nzta.govt.nz/SH7-maruaia-springs-to-reefton



Email WestCoastSpeedReviews@nzta.govt.nz



Attend a drop-in session

Reefton i-site

2 - 4pm, Tuesday 16 November 2021

67- 69 Broadway Reefton

Blacks Point Museum

5 - 7pm, Tuesday 16 November 2021

Franklyn Street, Blacks Point

Springs Junction

11am - 1pm, Wednesday 17 November 2021

St John rooms next to Fire Station SH7



Online information sessions

6-7pm, Monday 15 and Wednesday 17 November 2021

We are also hosting online information sessions via Zoom. These sessions will be hosted by our safety experts and provide an opportunity for those attending to ask questions about the speed along this road.

Please email WestCoastSpeedReviews@nzta.govt.nz to register for a session.

If New Zealand moves alert levels due to Covid-19 and the level does not allow for us to provide community drop-in sessions on the coast, these sessions will be cancelled and moved to online sessions via Zoom.

We will update our website if these community drop-in sessions need to be moved to online and advise on how you can register to attend a session.

Speed review process

We'll use the feedback we get during engagement to recommend what speed limits are best for these roads and then formally consult with you. The stages of the speed review process are:

Speed Review Starts

A technical assessment of the road is carried out to find out about crash history, average vehicle speeds, volume of vehicles and development of surrounding areas. This helps to determine what safe and appropriate speeds should be.

Engagement

We talk to local communities and stakeholders to understand how the road is being used, understand any safety concerns and get feedback on current speed limits.

Consultation

This stage involves sharing a detailed proposal and asking people for any additional information that might impact the final decision. Consultation for any proposed speed limit change is about much more than asking if people are 'for or against' the proposal. It is about seeking valuable local and community input that might have an impact on the final decision.

Notification of speed limit change

Final decision is published on our website and the public is notified.

New speed limit on the road

New speed limit signs installed on the road.