

# SH7 AHAIIRA BRIDGE REPLACEMENT PROJECT

## Frequently asked questions

28 JANUARY 2020

### 1. What is the SH7 Ahaura Bridge replacement project?

The Ahaura bridge replacement project is the construction of a new two-lane bridge over the Ahaura River, west (downstream) of the existing Ahaura Bridge.

The project also improves the Camp/Clifton Streets intersection, retains existing property access and provides a pedestrian footpath on the upstream side of the new bridge that will link to the existing pedestrian footpath in the township.

### 2. Why is this project needed?

State Highway 7 (SH7) provides the most direct route between Greymouth and the upper South Island, including Nelson and Blenheim. The existing Ahaura Bridge is a single-lane bridge which requires ongoing maintenance as it continues to deteriorate and is reaching the end of its life.

This project will provide an efficient and reliable SH7 network for all road users and the local community, which is vital to the social and economic wellbeing of local communities and the West Coast region. It will also provide walking and cycling facilities between Ahaura township and residences south of the Ahaura River.

### 3. What are the benefits of the new bridge?

The Transport Agency carried out a Detailed Business Case for the replacement of the bridge in 2017 and identified the following four key benefits:

- Increase resilience and reliability of the State Highway network
- Provide connectivity and predictable travel
- Improve the load and traffic capacity of the crossing
- Improve road safety of road users.

### 4. What will happen to the existing Ahaura Bridge?

The existing bridge will be removed once construction of the new bridge is completed.

### 5. How will the new bridge realignment connect to the existing SH7 network?

There will be a new northern approach, slightly west of the existing northern approach, to connect the new bridge and existing SH7. The existing northern approach will be redesigned to continue to provide property and river access.

In order to connect the bridge to SH7 on the southern end, changes are needed. A new intersection will be formed to provide access to the properties south of the river.

## 6. Will the new bridge be designed for high productivity motor vehicles (HPMV's)?

The new bridge will be designed to loading standards to provide for HPMV's and other overweight vehicles.

## 7. When will construction of the new bridge start?

Construction commences during February 2020.

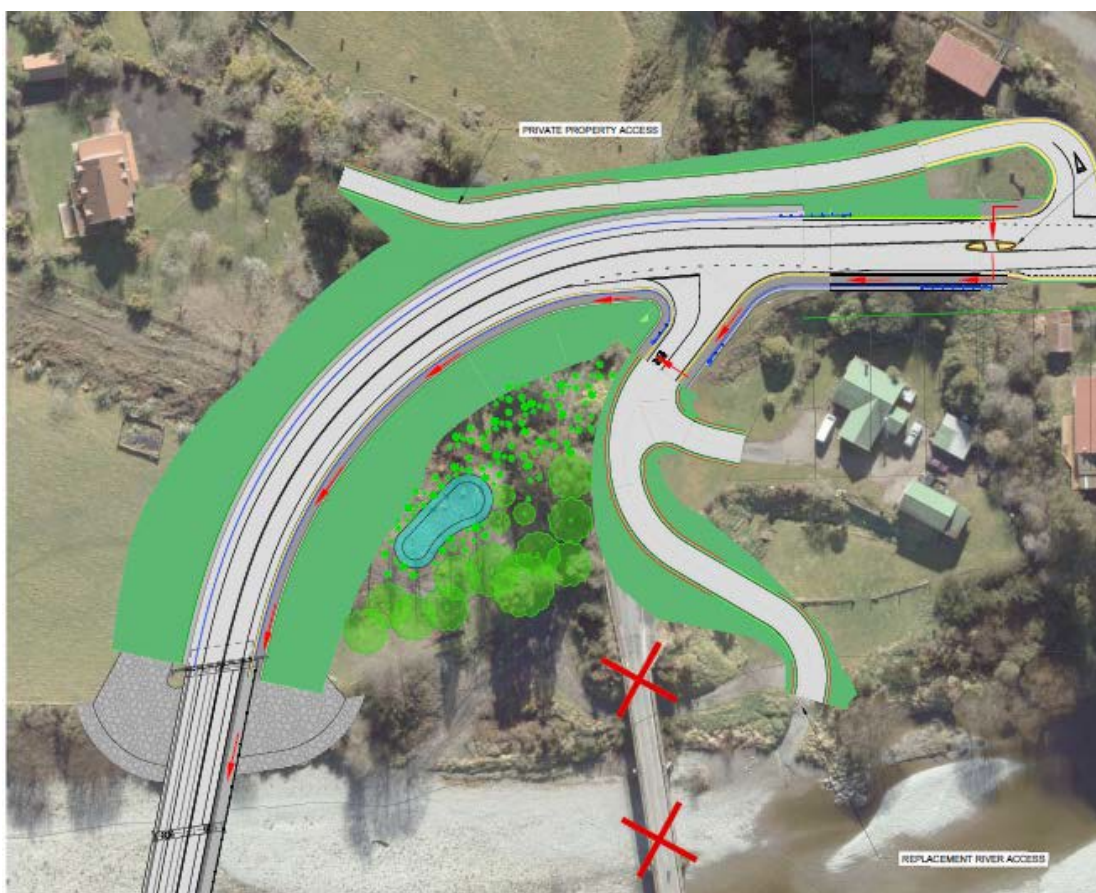
## 8. How long will it take to build the new bridge?

We estimate construction will take approximately 15 months to complete, and another three months to deconstruct the existing Ahaura Bridge.

## 9. Will the project provide access to Ahaura River?

Access to the northern bank of the Ahaura River will be retained. The existing northern bridge approach will be redesigned as a local road to connect to the existing access track to the river. The existing southern approach will become a no-exit road. The location of the proposed northern river access is shown in figure 1.

**Figure 1: Location of the proposed northern river access to the Ahaura River.**



## 10. What will be the speed limit on the new bridge?

The speed limit will be set at 50km/hr from the southern approach of the bridge. The speed limit will be further reinforced by an electronic 'your speed' sign placed immediately off the northern approach prior to entering the Ahaura township.

## **11. What will the new bridge mean for access to nearby properties?**

All access to properties on the northern and southern sides of Ahaura River will be maintained, however there may be times when access to properties may be restricted during construction. We will aim to keep this to a minimum. Advanced notification of any property access restrictions will be made. The existing southern approach will become a local access road which will provide access to properties south of the river. This local access road will be a no-exit road.

## **12. How long is the new bridge?**

The new bridge will be approximately 218 metres long.

## **13. What facilities for cyclists and pedestrians will the new bridge have?**

Work included in the project includes a pedestrian path on the upstream side of the new bridge, linking the south to the Ahaura township, improvements to kerb and channels, a shoulder for cyclists, pedestrian crossing facilities and intersection layout.

## **14. Will there be safety barriers on the new bridge separating the path?**

The pedestrian path will be separated by concrete barriers between the path and the carriageway and a pedestrian barrier and handrail will be installed on the outer edge of the bridge.

## **15. What consultation has been done for this project?**

Consultation with the Ahaura community, stakeholders and directly affected parties helped shape the proposed design of the project.

An open day was held on 16 March 2017 which provided the project team with the opportunity to engage with the community and discuss the possible project options. It also provided the opportunity for the community to share their views and potential concerns on this project. Meetings have also been held with the directly affected parties and stakeholders to get feedback on this project.

## 16. What changes are planned for the Camp/Clifton Streets?

The Camp/Clifton Streets intersection will be upgraded to better define the intersection to improve safety of road users. This will be done through changes to the line markings on the road and better definition of the corner. The proposed upgrade is shown in figure 2.

**Figure 2: The proposed upgrade to Camp Street/Clifton Street intersection.**

