

ANNOUNCEMENT DUE SOON

Construction teams on the Matahiwi site have made good progress this month on the construction of a temporary road across the slip face. However, the recent rain has meant several sites around the country suffered significant damage. Consequently, we need to carefully monitor the Matahiwi site in particular.



LOCAL ROADS

Regional outlook

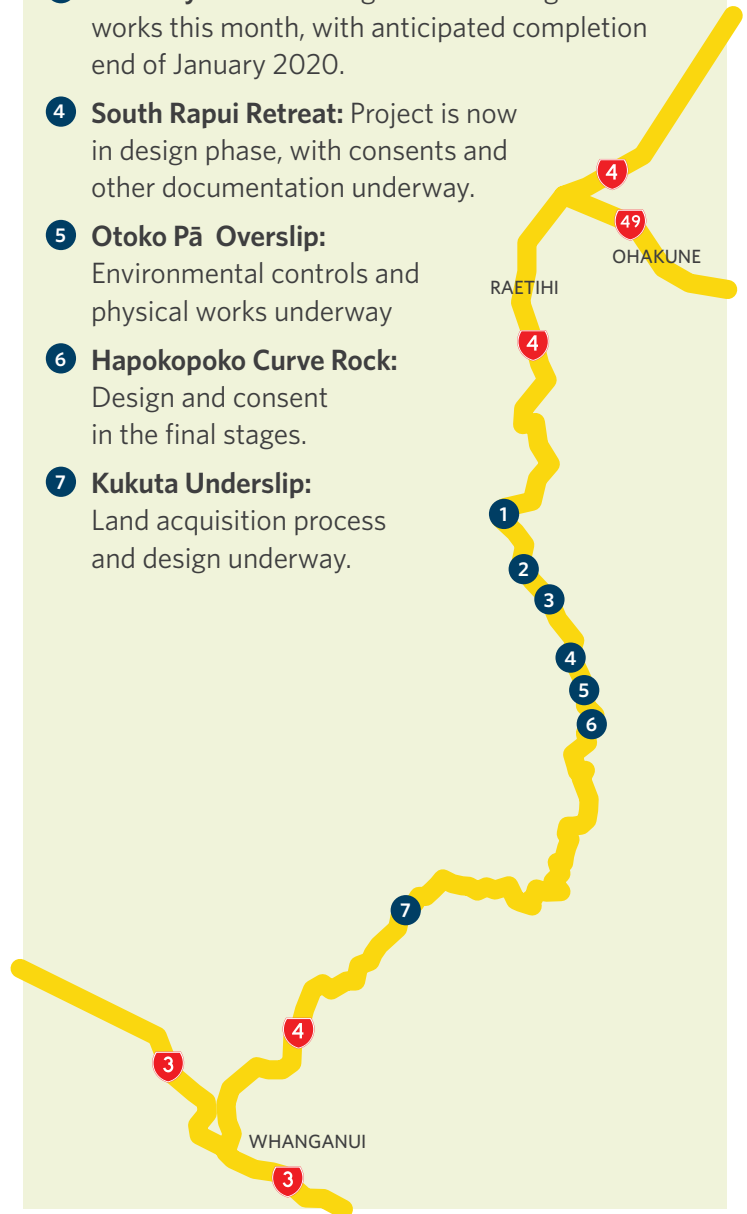
Part of SH43, which links Stratford to Taumarunui, is closed due to a drop out near Aukopae. A detour through Ohura and Matiere is in place. This detour will link northbound traffic into SH4, north of Taumarunui.

As you know, Manawatū Gorge has been closed since the slips in 2017. We are continuing to progress work on the replacement – Te Ahu a Turanga: Manawatū Tararua Highway. So, if you're travelling via Woodville you should use either Saddle Road or Pahiatua Track. Please keep in mind that there is maintenance work happening on these roads too, so you can expect Stop/Go sites and temporary speed restrictions on these routes.

The SH4 bulletin will be available monthly at selected sites in Raetihi, Ohakune and Whanganui. We encourage you to read about progress on State Highway 4 (SH4) and share it with your whanau. If you have questions about anything you see in the SH4 bulletin there are a range of places to find out more on the back page.

SH4 CORRIDOR UPDATE

- Matahiwi Underslip:** Earthwork almost completed. Ongoing surveying and monitoring of slip-face and site for earth movement etc.
- Raukawa Falls:** Land acquisition and consent process underway.
- Whiskey's Corner:** Programmed to begin works this month, with anticipated completion end of January 2020.
- South Rapui Retreat:** Project is now in design phase, with consents and other documentation underway.
- Otoko Pā Overslip:** Environmental controls and physical works underway
- Hapokopoko Curve Rock:** Design and consent in the final stages.
- Kukuta Underslip:** Land acquisition process and design underway.



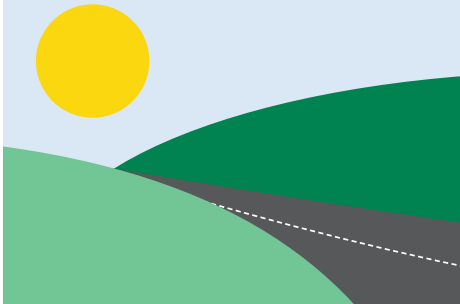
SIGN UP to receive
monthly updates online
nzta.govt.nz/sh4-repairs

PLAN AHEAD: KNOW BEFORE YOU GO

Summer brings longer days and warmer nights, but it's also a time when more people are travelling around the country. If you're out on the roads, please slow down, leave space and drive to the conditions.

Waka Kotahi is working hard to minimise the impact of closed or partially closed roads in the Central North Island. Keeping the traffic flowing through this region is a key priority and excellent progress has been made on the immediate solution across the Matahiwi slip site. However, this is a temporary road and will close at short notice if there are any safety concerns. For updates head to the journey planner:

journeys.nzta.govt.nz or phone: **0800 4 HIGHWAYS** (0800 44 44 49). You can also scan the QR code below if you have a smartphone.



LOCALS LOOKING FORWARD TO REOPENED ROAD

The slip and resulting closure of part of SH4 has left the community of Raetihi without the usual holiday season through traffic to Whanganui. The highway is a vital link for the area, and local businesses like Caltex Raetihi are doing what they can to keep the community moving.

'The biggest part of this, with the road closed, was for the people that use it every day - like the tradies and people who come up from Whanganui. That was probably for us, and other businesses in town, that immediate loss of trade' says Caltex Raetihi manager Lisa Martin. 'Initially we were all thinking, oh gosh, is this going to be closed for the next two years!'

There was relief however, when the Transport Agency announced that a temporary road would be up-and-running in the short term. 'We're all really looking forward to the road opening. Both for the business side and the personal side'.

'People can't wait... it's been well missed that road. I know a couple of friends down the road with kids. They're on the other side of the slip and are having to deal with getting to school and things like that. The life-link is so important,' she said.

Work on the temporary road across the slip site is progressing well. An announcement is expected before Christmas as to the likely opening date.



SH4: THE ROAD AHEAD

- We're continuing work on several sites along SH4 and hope to make significant progress over the summer (weather depending)
- The temporary road at the Matahiwi site will be closely monitored to ensure safety protocols are met once traffic begins to flow again.

WHERE CAN WE GET COPIES OF SH4 BULLETIN?

Ruapehu District Council offices

Ohakune i-Site

Waiouru i-Site

Whakapapa Village i-Site

Ruapehu District Council - Main Office

Raetihi Caltex Motors

Raetihi Farm Supplies

Raetihi Four Square

Raetihi Information Centre

Ohakune BP Service Station

Ohakune New World

Placemakers Ohakune

GAS National Park

Whanganui District Council

Whanganui Library

Gonville Library

Z-Dublin St Service Station

Whanganui

BP 2Go Service Station

Whanganui

Cafe 4Forty4

Whanganui

Whanganui i-Site

For more information and updates, please visit nzta.govt.nz/sh4-repairs

Traffic updates: nzta.govt.nz/traffic

Facebook: facebook.com/nztacni

Twitter: twitter.com/nztacni

Journey planner: journeys.nzta.govt.nz

Phone: **0800 4 HIGHWAYS** (0800 44 44 49)

If you have a smartphone, open the camera app and hover over the code to the right then click the link once prompted on your phone.

