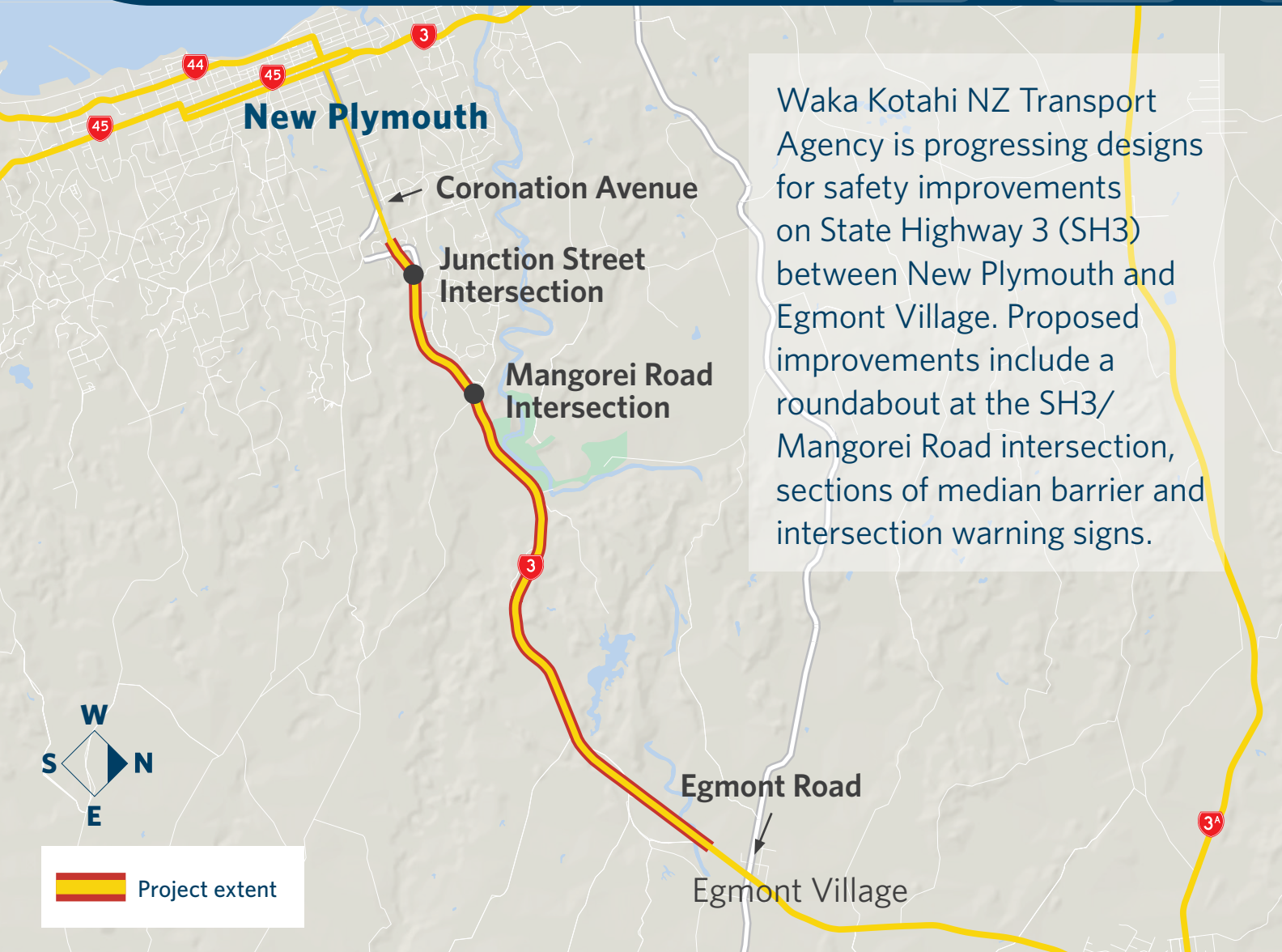


New Plymouth to Egmont Village



There were 77 crashes on this section of highway between 2016 and 2020 resulting in nine serious injuries. The proposed improvements aim to make this busy route safer for everyone using it.

Following development of a business case in 2018 to identify safety improvements on SH3 between

New Plymouth and Hāwera, the 9.7km section of road between New Plymouth and Egmont Village was prioritised for design funding due to its high safety risk.

Once designs for the safety improvements are progressed and we have a better understanding of construction costs, we'll apply for construction funding through the National Land Transport Programme (NLTP).

The project team is now starting to talk with local councils, emergency services, transport representatives and some property owners who may be affected by the project.

Once we've spoken to those who may be directly impacted, we'll talk with the community about the proposed safety improvements and get feedback.

Waka Kotahi is investigating improvements for the wider New Plymouth to Hāwera route.

These safety improvements are delivering to New Zealand's Road Safety Strategy, *Road to Zero 2020 - 2030*, which aims to reduce the number of people killed or seriously injured on our roads by 40 percent over the next decade.

Investigation works

Over the coming weeks we'll be doing some investigations along the corridor to help inform our designs. This includes looking at the current road, the ground underneath and around it, surveying the area and flying a drone over top of it.

- Crews will be carrying out the investigations over several days and nights from 19 July through to the end of August.
- Some of the investigations include digging holes in the road to assess the ground underneath it before refilling the hole. This work may be noisy.
- All investigations will take place inside the legal road boundary.
- To keep our staff and the community safe while we're carrying out these works, there will be traffic management in place, including temporary reduced speed limits and stop/go traffic management.
- At times, we may need to cone off lanes or the road shoulder to allow the team space to safely complete their work.
- If we are working near your driveway, our crew will direct you in and out of your driveway safely.
- We will do our best to minimise disruption to journeys. We appreciate your patience and cooperation while we carry out this work.



To find out more

email taranakiprojects@nzta.govt.nz
or visit nzta.govt.nz/np2h
or phone the project team on **022 381 8711**



Scan the QR code

Open the camera on your mobile device and hover over the QR code to be directed to the website.