

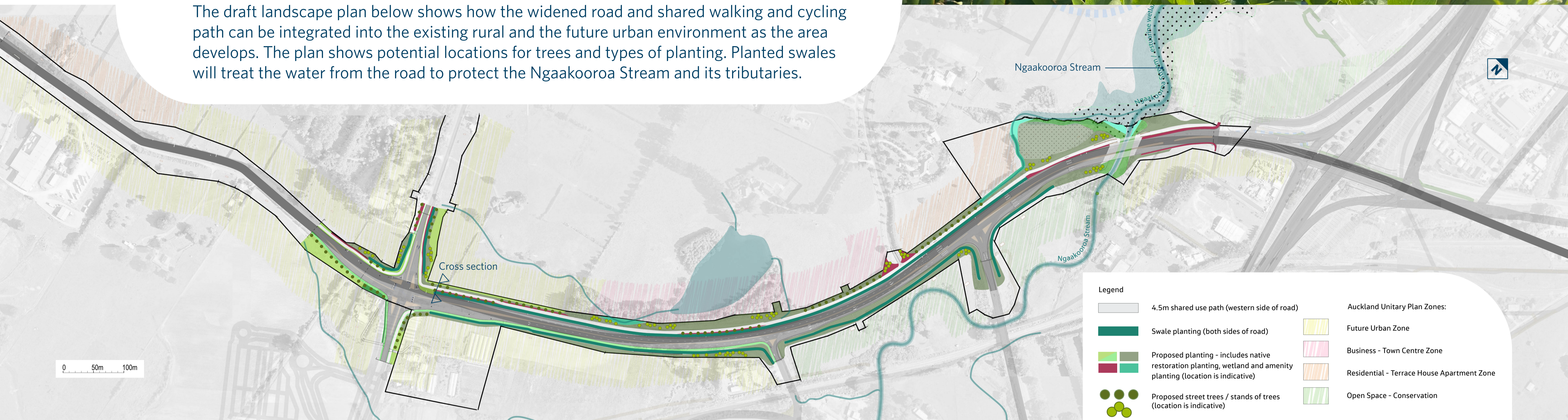
The environment - Te taiao

The environment - te taiao - is a key consideration as part of the transport upgrade to State Highway 22. A plan for landscape and urban design is currently being developed in partnership with Mana Whenua.



Image showing a typical native planting scheme proposed for the corridor

The draft landscape plan below shows how the widened road and shared walking and cycling path can be integrated into the existing rural and the future urban environment as the area develops. The plan shows potential locations for trees and types of planting. Planted swales will treat the water from the road to protect the Ngaakooroa Stream and its tributaries.



Legend	
	4.5m shared use path (western side of road)
	Swale planting (both sides of road)
	Proposed planting - includes native restoration planting, wetland and amenity planting (location is indicative)
	Proposed street trees / stands of trees (location is indicative)
	Auckland Unitary Plan Zones: Future Urban Zone
	Business - Town Centre Zone
	Residential - Terrace House Apartment Zone
	Open Space - Conservation

Community engagement He kōrero mā ngā hāpori

We'll continue to keep the community informed of the project as it develops.

For more information and to sign up for future project updates, visit the project webpage or contact the project team:

nzta.govt.nz/projects/sh22-drury-upgrade

sh22drury@nzta.govt.nz



Cross section

Typical cross section showing the western side of SH22

