



Waihī to Ōmokoroa

SAFETY IMPROVEMENTS



Between 2009 and 2018, 25 people died and 66 were seriously injured on this stretch of road. Most of the crashes were caused by drivers running off the road and hitting trees, poles or deep ditches, head-on collisions and crashes at intersections.

Something needs to change.

How we are making it safer

To make this stretch of road safer, we are:

- › putting in a wide centreline to help separate oncoming traffic
- › widening the road and shoulders to give drivers more room
- › installing roadside safety barriers in areas where there are power poles, trees and deep ditches
- › making intersections safer.

Flexible road safety barriers

Flexible road safety barriers catch you before you hit something harder. The wire cables flex to absorb the impact, slowing down your vehicle and keeping it upright. They take the impact so you and your passengers don't.



Shoulder widening

A wide sealed shoulder means there's room to recover if you make a mistake. This can reduce crashes by up to 15 percent.



Wide centrelines

Widening the centreline is a simple way to steer drivers away from each other. This can reduce serious crashes by up to 20 percent.



Keep up-to-date

Sign up for updates to find out more



nzta.govt.nz/w2o

Get in touch



bopprojects@nzta.govt.nz

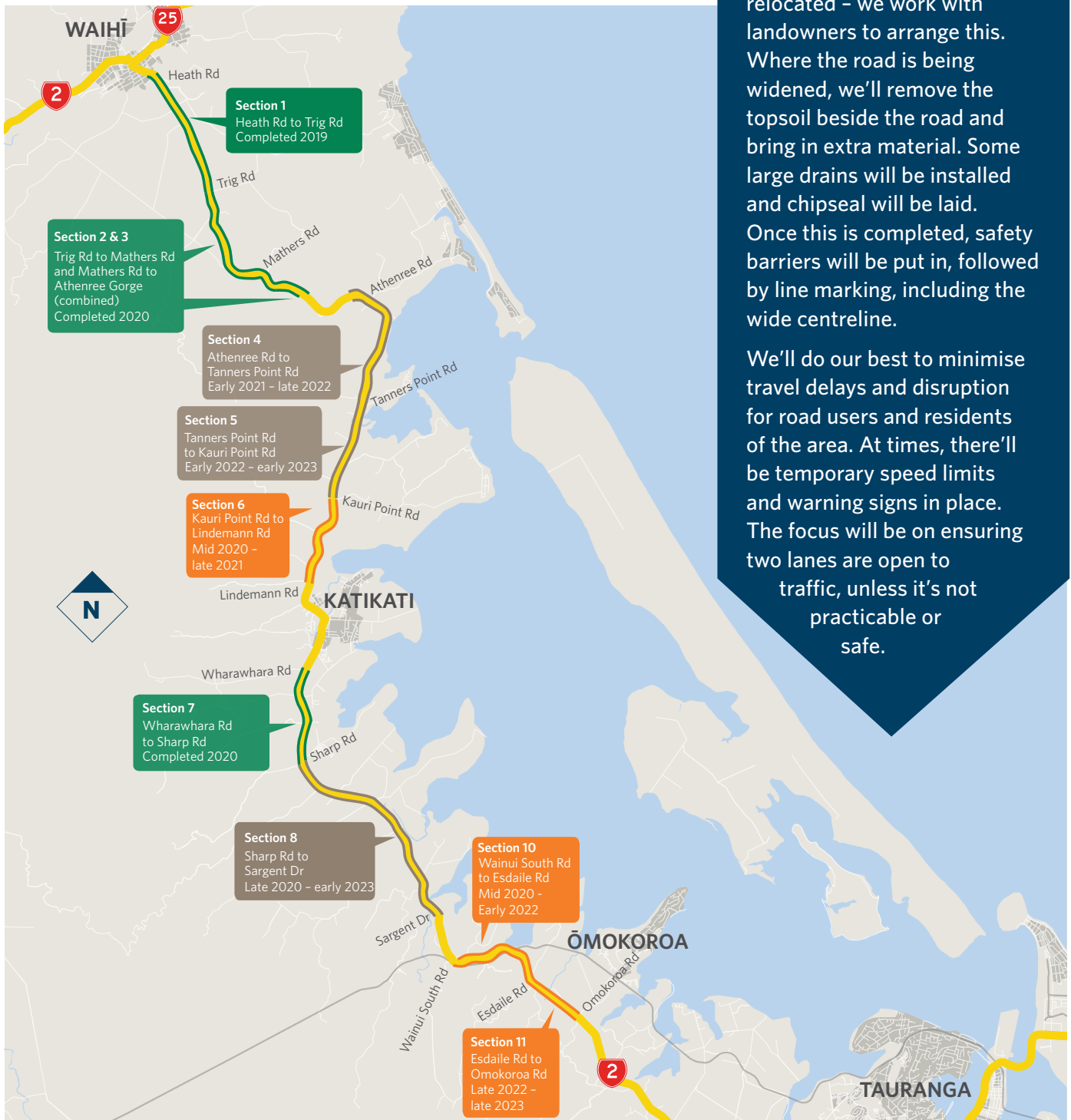
Construction

The Waihi to Ōmokoroa safety improvements project is around 40km long. We've split the project into 10 sections to help limit the number of roadworks encountered along the highway.

On-site activity is underway between:

- > Athenree Road to Tanners Point
- > Kauri Point Road to Lindemann Road
- > Sharp Road to Sargent Drive
- > Wainui South Road to Esdaile Road.

Each section will take between 12 to 18 months to complete. The project is expected to be finished in 2024.



What to expect during construction

If required, water and power services will be moved and trees and vegetation cleared. In some areas, fences inside the road boundary will be relocated - we work with landowners to arrange this. Where the road is being widened, we'll remove the topsoil beside the road and bring in extra material. Some large drains will be installed and chipseal will be laid. Once this is completed, safety barriers will be put in, followed by line marking, including the wide centreline.

We'll do our best to minimise travel delays and disruption for road users and residents of the area. At times, there'll be temporary speed limits and warning signs in place. The focus will be on ensuring two lanes are open to traffic, unless it's not practicable or safe.