



## Masterton to Carterton safety improvements

## FEEDBACK SUMMARY

DECEMBER 2018



### Better journeys - now and in the future

We're looking at ways to make State Highway 2 (SH2) between Masterton and Carterton safer and keep traffic moving as the Wairarapa region continues to grow. This stretch of road is part of a key route between the Wellington region and the north. It's important for locals, economic development and tourism.

*We know people are excited about the future of the Wairarapa and a lot is being planned for this region. We want to make the road between Masterton and Carterton better now, and also plan for the future.*

*We will be looking at short-term safety improvements and also considering the potential for long-term solutions. You can find out more and stay up to date at [nzta.govt.nz/m2c](http://nzta.govt.nz/m2c)*

We have had great conversations with communities about this road, and what we could do to make it better.

Earlier this year we held drop-in events in Masterton and Carterton to share our ideas and talk with people who use the road. We wanted to find out what makes the road feel unsafe and what people think could make it better. We also provided opportunities to provide feedback by phone, email or online.

More than 600 people came to talk to us at the events and we received a number of online comments, emails and phone calls as well as social media messages.



### Did you know?

- Around **12,500** vehicles travel through Clareville every day. Over the next 10 years we expect that figure to rise by 2.5 percent each year, taking the average daily number to **16,000** by 2028.



- **20,000** vehicles travelled over the Waingawa Bridge in just one day. (November 2017)



- The legal speed limit between Masterton and Carterton is **100km/h** however the average speed travelled is **77km/h**.

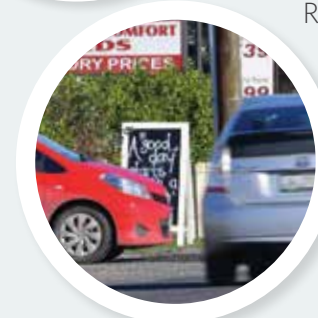


## These things worry you or make you feel unsafe:

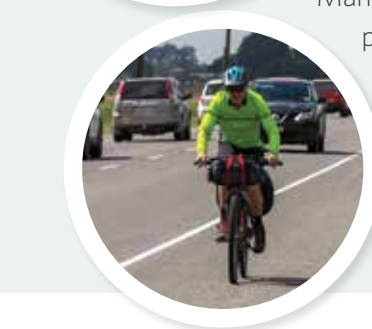


### High traffic volumes

**Intersection safety:** Many of you don't feel safe turning right onto and off the state highway. You are particularly concerned about safety at the SH2/Ngaumutawa Road intersection, the SH2/Cornwall Rd/Norfolk Road intersection and SH2/Chester Road intersection.



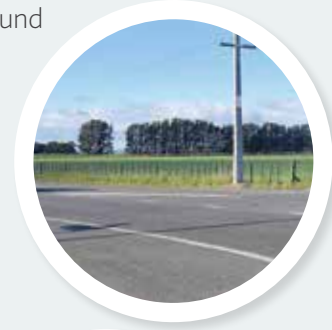
**Access:** You told us it's difficult to get to and from the Clareville A&P Showgrounds/Trust House Hockey, the Waingawa industrial estate and local businesses at peak times. Many of you avoid traveling during peak times.



**Cycling and walking:** You told us you feel unsafe crossing the state highway in some areas. Many of you said you would

not cycle on the highway or encourage tourists to either, because of safety concerns.

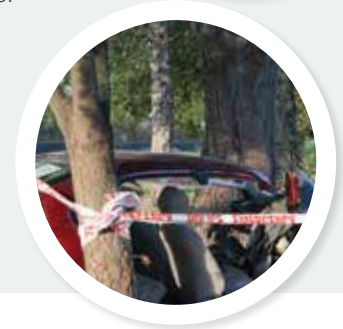
**Speed:** You told us you'd like to see the lower speed limit zones in Masterton and Carterton extended. Some of you wanted the speed limit lowered around busy areas such as the Chester Road entrance to Clareville A&P Showgrounds to make access safer and easier.



### The road and roadside:

You highlighted road surface and other maintenance issues.

**Crashes:** You were concerned about the number head-on and run-off-road crashes. Crashes at intersections also concerned you.



You said you want us to keep these things in mind as we work on a plan:



Local communities



Future development



Population growth



Walking and cycling



Tourism



Agriculture



Community events



### Making rural roads safer

This project is part of the Safe Roads and Roadside Programme underway to make New Zealand rural roads safer.

## How your feedback is being used

This feedback is very valuable in helping us to develop options. We use your local knowledge of the roads, as well as our research, to understand how the road is used and make sure we haven't missed anything important.

## What happens next?

We'll start working on a plan to make this road better and share it with the community next year. The plan won't be final and you'll have a chance to have your say on it before we start moving forward to gain construction funding.

## Want to know more?

Angus McGrath, Community Engagement Manager

📞 021 206 9715

@ angus.mcgrath@saferoads.co.nz

📍 nzta.govt.nz/m2c