



SH1 Tinwald Corridor Improvements

| | |
|--------------|--|
| What | We'll be installing a temporary traffic management layout |
| Where | Graham Street, at the intersection with McMurdo Street |
| When | From Monday 15 January 2024, for approximately 5 weeks. Our work is weather dependent and may need to be rescheduled to the following shift(s). |

What are we doing?

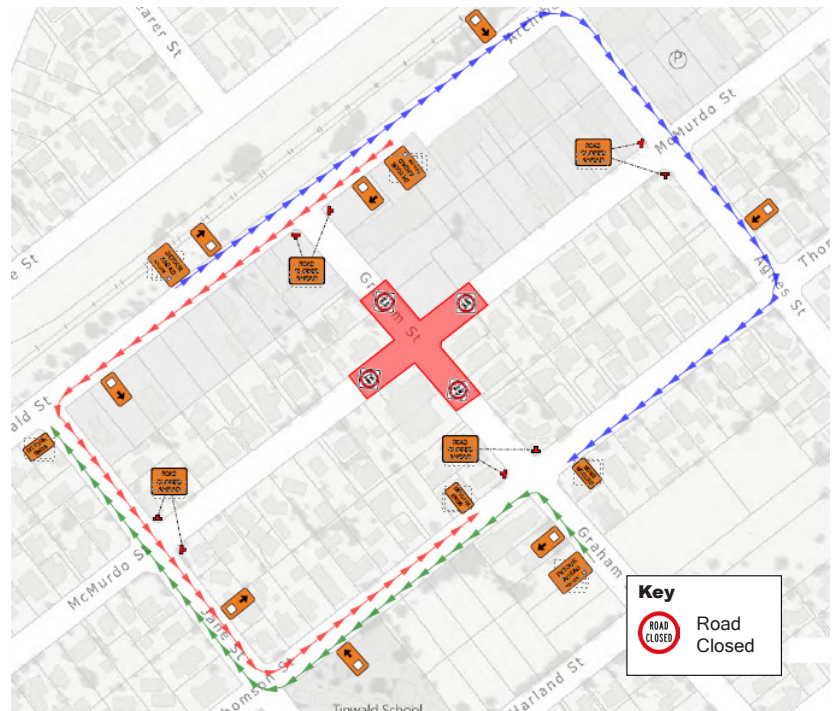
From Monday 15 January 2024, for approximately 5 weeks, we will be working on Graham Street, at the intersection with McMurdo Street. Our works will include new kerb and channel and footpath construction and carriageway resurfacing which requires Graham Street to be closed during this time, as shown below.

Traffic and pedestrian impacts

The road closure will be in place from Monday 15 January 2024 for approximately 5 weeks. Please use the signposted detour routes as shown.

Please look out for our staff and follow their instructions. Footpath access around our work site will be maintained.

Also, please look out for changes in traffic management and follow signs on site. A 30kph speed limit will be in place.



We are doing our best to give you accurate timeframes but unforeseen issues like weather, buried obstructions and unknown services can make work take longer. We're sorry for any disruption and thank you for your patience.

CAN WE HELP?

Please contact Fulton Hogan on 0800 ROAD FH (0800 7623 34) Monday to Friday, 8am - 5pm, to discuss any specific access needs such as nurse/doctor visits or Meals on Wheels deliveries to your property. Contact us at anytime if the matter is urgent.