



Rolleston flyover and transport improvements



HAVE YOUR SAY ON THE SH1 ROLLESTON FLYOVER AND TRANSPORT IMPROVEMENTS PLUS SAFER SPEEDS

from 20 July to 17 August 2021

WE'RE ASKING FOR YOUR FEEDBACK ON THE PROPOSED SH1 ROLLESTON FLYOVER AND TRANSPORT IMPROVEMENTS AS WELL AS SPEED LIMITS

About the Rolleston flyover

The New Zealand Upgrade Programme (NZUP) is investing \$6.8 billion to save lives, get our cities moving and boost productivity in the country's growth areas.

As a part of the NZUP, Waka Kotahi NZ Transport Agency is working closely with Selwyn District Council and KiwiRail to plan the \$125m* NZUP funded package for Rolleston, which includes investment in highway intersections and rail improvements.

Back when the second stage of the Christchurch Southern Motorway was planned, Waka Kotahi and Selwyn District Council formally agreed the safety and efficiency gains as a result of the new motorway would incorporate Rolleston. This was so a future-focussed, whole of transport network could be achieved for everyone – freight, commuters, rail, cyclists, pedestrians and public transport users.

A large amount of investigation, planning as well as community feedback received (as part of Selwyn District Council's Long Term Plan) has resulted in a proposed SH1 flyover for Rolleston with improvements to highway intersections.

*Total cost including contingencies (current expected project cost is around \$90m).

The long-lasting package of road and rail improvements provides a streamlined extension off the southern motorway while elevating and strengthening Rolleston's community connections.

The project comprises:

- a flyover local connection between the residential side and the industrial hub of Rolleston. The flyover will be a safer way for people – whether they are cycling, walking, on buses or in cars – to cross the highway while providing much needed community connection for Selwyn district
- closing SH1 Hoskyns Road and Rolleston Drive North intersections and removing the level crossing, which will be much safer for everyone
- a new southbound service lane for local traffic running parallel to SH1 from Rolleston Drive North to south of Brookside Road — left in/left out turns only for safety
- a new roundabout improving safety at SH1/Dunns Crossing Road/Walkers Road intersection, for better freight access to Rolleston's industrial area and community access on and off the highway at the southern end of Rolleston

... continued over the page

- safety improvements at SH1/Rolleston Drive South intersection
- changes to the rail corridor to improve train connections, operations and efficiencies.

Complementary projects — not funded by NZUP — but planned to support the wider transport network include:

- assigning Two Chain Road/Walkers Road and Jones Road as southern freight routes and improving the infrastructure to support this*
- reviewing speed along SH1 from Rolleston to Dunsandel and potentially local roads as well
- Rolleston to Burnham shared path*
- highway safety improvements including median barriers at some locations and a possible roundabout for Burnham*.

*Funding, timing and community consultation to be confirmed.

Where are we at?

NZUP funding is secured and a business case is underway.

Highway intersection changes and a new flyover will mean safer and more efficient commuter and freight routes and rail corridor, while making it safer and easier for people to drop in and visit Rolleston and exit onto a freer flowing highway.

We're at the point now where we are ready for community input on the project.

We're asking for your feedback on the plans shown in this brochure and online.

Why review speeds?

The length of SH1 from Hoskyns Road through to Burnham Road in Dunsandel is in the top 10% in New Zealand where we can make the biggest difference in reducing the numbers of people being killed and seriously injured in road crashes.

The quickest and most effective way to keep people safe on our roads is to ensure we have the right speeds. While we are talking with the community about planning major roading infrastructure, it makes sense to check the current speeds are safe for the road at the same time.

Why remove the intersections at Rolleston Drive North and Hoskyns Road?

The Hoskyns Road level crossing is high-risk for vehicles and trains due to high traffic volumes and how close the highway is to the rail tracks.

Over the past ten years, there have been 40 near-misses and collisions at the SH1 Hoskyns Road level crossing. Because of the risk, KiwiRail has reduced train speeds through Rolleston, however this holds up traffic and means rail freight is less efficient on our main trunk line.

Also, the state highway intersections at Rolleston Drive North and Hoskyns Road are in a high-speed, high-volume environment. This increases the likelihood of collisions and their severity if they happen.

Lots of people have been asking us why there is a merge before the

traffic signals at Hoskyns Road. The merge is there to slow the traffic and reduce the safety risks approaching the intersection.

The proposed flyover will separate local traffic from state highway traffic, making travel much safer and freer flowing in all directions. This separation of traffic and trains will also remove the risk of a train vs. vehicle collision. The safety benefits of a flyover for people using the road and rail are huge.

Why not go under?

We investigated an underpass, however we concluded it would be too complex and uneconomical to construct a tunnel under a live rail line and state highway. The ramps leading up to and out of the tunnel would require significant property, while creating geotechnical and stormwater issues. It would also provide limited options for pedestrians and cyclists. We think the flyover is a better option.

Will my property be affected?

There is still a lot more investigation work on the Rolleston flyover project to be done. At this stage in the project we don't have all the answers. As planning the flyover and transport improvements starts to take shape the team is also working on understanding what the potential impacts could be including noise and vibration, traffic impacts, constructability, air quality and more.

We will keep people informed and work together with our partners – iwi, Selwyn District Council and KiwiRail, as well as people in the community, businesses, landowners and industry – to achieve the best outcomes.

We encourage you to get in touch so we can keep you updated. If you aren't sure, please subscribe to updates on our website or get in touch and one of the team can assist.

FOR MORE ANSWERS TO FREQUENTLY ASKED QUESTIONS AND TO HAVE YOUR SAY:

- visit www.nzta.govt.nz/rollestonflyover
- email us rollestonflyover@nzta.govt.nz
- pick up a feedback form – contact us for locations
- speak to the team at one of the following events:

Wednesday 21 July 10am-12noon, Rolleston Community Centre, 94 Rolleston Drive

Saturday 24 July 1-3pm, Taumutu Room, Selwyn District Council, 2 Norman Kirk Drive (note, change of venue)

Sunday 1 August 9-11am, Rolleston Farmers Market, 631 Springston Rolleston Road

Wednesday 4 August 7pm-8pm, Taumutu Room, Selwyn District Council, 2 Norman Kirk Drive

Wednesday 11 August 3-5pm, Selwyn Sports Centre, 70 Broadlands Drive.

ROLLESTON FLYOVER AND TRANSPORT IMPROVEMENTS PROJECT TIMEFRAMES

Business Case Phase
April 2021 to
Early 2022

Community feedback invited and incorporated into planning
July/August 2021

Community feedback invited on proposed plan
End of 2021/
early 2022

Final plan shared with the community
2022

Detailed Design Phase
2022 to 2023

Construction Starts
2024 to 2026

To minimise traffic disruption, changes to intersections and flyover connections will be constructed first, before the flyover.

New Zealand Upgrade Programme



HAVE YOUR SAY ON SAFER SPEEDS



We're working towards a future where no one is killed or seriously injured on our roads.

Lots of change is needed to get us there, but there is one thing that will make a huge difference immediately – ensuring speed limits are safe and right for this road.

While we're talking with you about planning major infrastructure for a safer road system, it makes sense to look at speeds in the wider area. That's why we're asking your views on transport improvements for Rolleston and on current SH1 speed limits, between Hoskyns Road and Dunsandel.

This stretch of highway is prioritised for a review of speeds because of the high number of people being killed and seriously injured in crashes.

Between 2010 and 2019, 139 people were either killed or injured in crashes on this road*, leaving families grieving and victims dealing with potentially life-long injuries.

To find out more visit: www.nzta.govt.nz/rollestonflyover

You can read more about how we are working with the NZ Police, Ministry of Transport, local government, WorkSafe and others to deliver Road to Zero, New Zealand's road safety strategy at: www.nzta.govt.nz/road-to-zero

Once the SH1 Rolleston Flyover and Transport Improvements are up and running, we will revisit speeds in the area to check they are still appropriate.

**Data from Crash Analysis System (CAS).*

Speed review process

We'll use the feedback we get during engagement to recommend what speed limits are best for these roads and then formally consult with you. The stages of the speed review process are:

SPEED REVIEW STARTS

Technical assessment of the road is carried out to find out about crash history, average vehicle speeds, volume of vehicles and development of surrounding areas. This helps to determine what safe and appropriate speeds should be.

→ ENGAGEMENT

We talk to local communities and stakeholders to understand how the road is being used, any safety concerns and get feedback on speed limits.

FORMAL CONSULTATION

Changing a speed limit is a legal process, so this stage involves sharing a detailed proposal with people and asking for any additional information that might have an impact on the final decision.

NOTIFICATION OF SPEED LIMIT CHANGE

Final decision is published on our website and the public is notified.

NEW SPEED LIMIT ON THE ROAD

New speed limit signs installed on the road.

SH1 ROLLESTON FLYOVER AND TRANSPORT IMPROVEMENTS/ SH1 HOSKYNS ROAD, TO DUNSANDEL SPEED LIMITS FEEDBACK FORM

HOW TO RESPOND

Feedback is open from 20 July to 17 August 2021. You can:

- mail this form, using the prepaid envelope for free
- send us an email or scan and email a completed form to: rollestonflyover@nzta.govt.nz
- visit our website www.nzta.govt.nz/rollestonflyover drop a comment on both speeds and the Rolleston Flyover and Transport Improvements on the online map



Name:

Email:

Phone:

Address:

.....

Organisation (if applicable):

Please tick if you do not wish to receive further information

1) Think about how you get on and off the highway and when you need to cross over SH1. What are your thoughts on the proposed Rolleston flyover and intersection changes? Can you see areas for improvement? *Use maps to make notes.*

2) Crossing the highway - right turns onto it or travelling right across - is an increased safety risk for people. We are proposing a roundabout at Walkers Road/Dunns Crossing Road to make getting on and off the highway safer. Would this work for you as the main southern access to Rolleston township? *Use maps to make notes.*

3) We have some ideas on how safety could be improved at the SH1/Rolleston Drive South intersection but we're keen to hear from you first, before settling on a proposed solution. How do you use Rolleston Drive South? What is your experience turning on and off the highway? *Use maps to make notes.*

4) Where we're planning major infrastructure it makes sense to look at speeds in the area and more widely. Have a think about the current SH1 speed limits from Hoskyns Road right through to Dunsandel. Do they feel safe and right for the road? Have you had near misses because it's hard to turn onto or off the highway? Are there places where lower speeds could mean people feel safer? *Use maps to make notes.*

5) Do you have any other highway safety concerns through and south of Rolleston? *Use maps to make notes.*

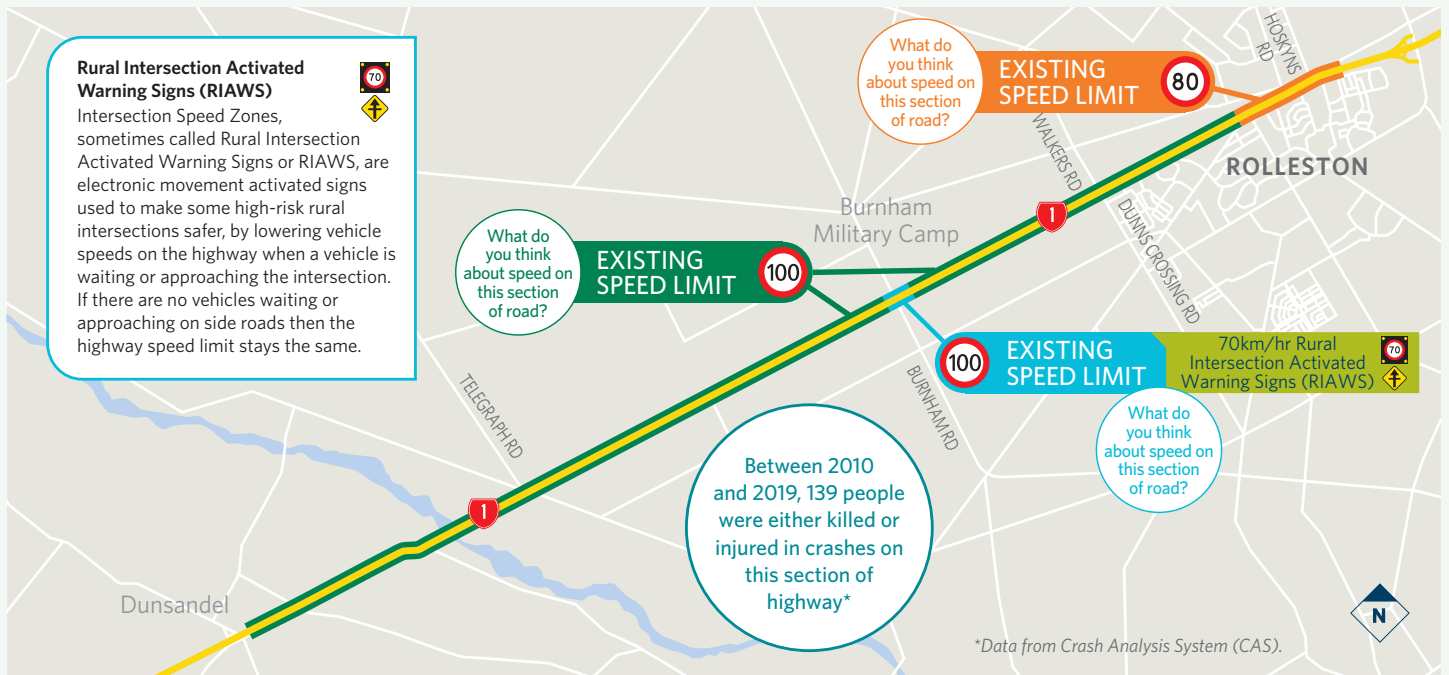
The feedback we get during engagement will be considered by our team along with technical information, to help refine planning for the Rolleston Flyover and Transport Improvements and recommend the right speeds for SH1 as it is now. The next step will be to consult with you on our recommendations later in the year.

PRIVACY STATEMENT

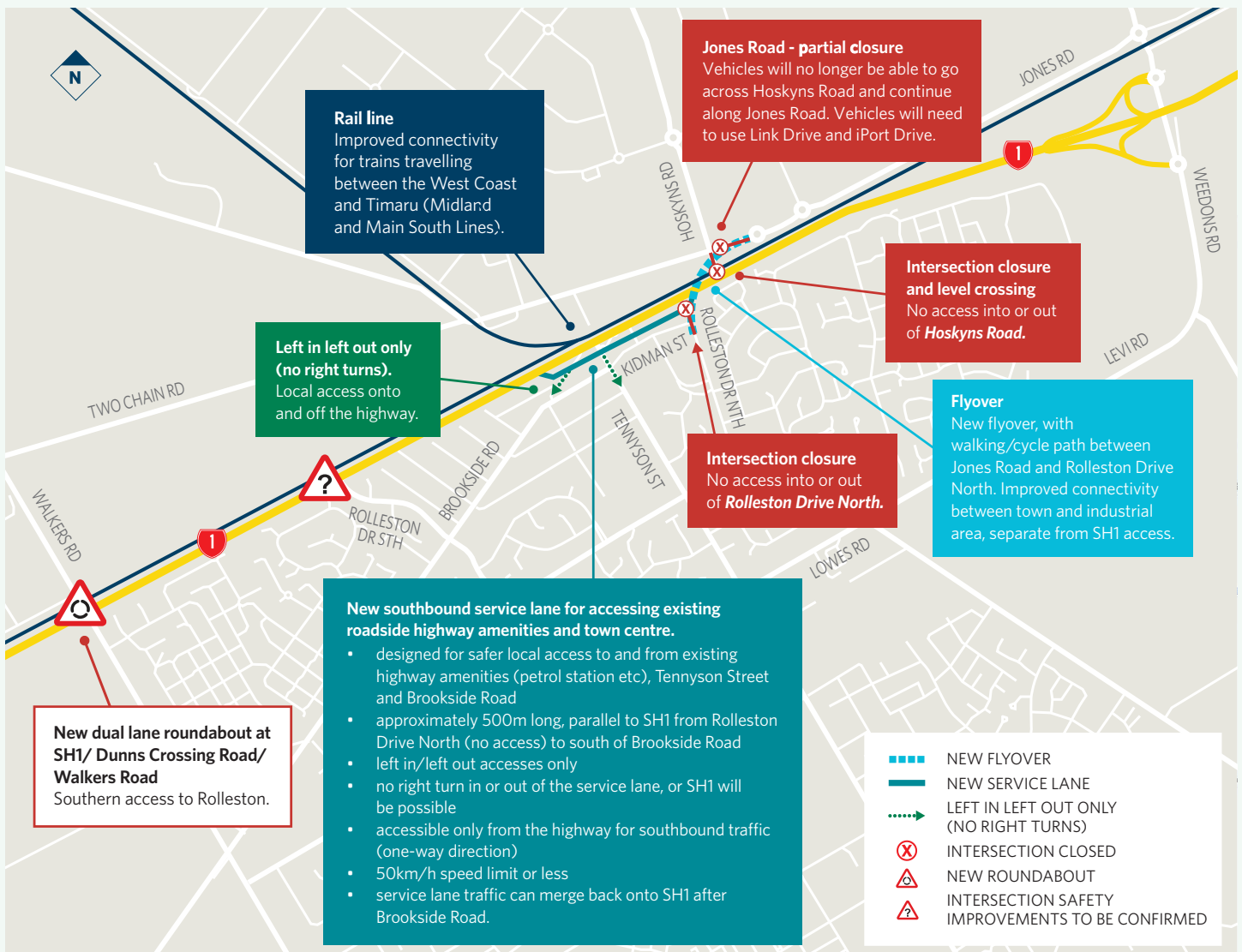
The information requested in this consultation/survey is being collected by Waka Kotahi NZ Transport Agency for the purpose of seeking feedback on speed limits on SH1, Hoskyns Road, Rolleston to Dunsandel in accordance with the Land Transport Rule: Setting of Speed Limits 2017. At the same time, feedback is being collected on the proposed Rolleston Flyover and Transport Improvements. Any personal information you submit as part of this process will be stored and processed by Waka Kotahi (who will use the information for analysis and reporting purposes), in accordance with the Privacy Act 1993. Please note that any feedback you provide is public information, and Waka Kotahi may identify you as the submitter should it publish your feedback or provide it to a third party if requested under the Official Information Act 1982. Please clearly indicate, therefore, if your feedback is commercially sensitive, or if for some other reason your feedback should not be disclosed and/or you should not be identified as the submitter. Any other personal information that you provide, however, will not be made public. Under the Privacy Act 2020 you have the right to request access to and correction of any personal information you supply as part of this process. If you wish to do so, **please email rollestonflyover@nzta.govt.nz**

MAP SHOWING WHERE WE ARE REVIEWING SPEEDS

Here are the current posted speed limits from just north of the SH1/Hoskyns Road intersection through to Dunsandel. The total length of corridor being reviewed is 17.8km. At this stage we are not proposing any speed changes. We want to hear your thoughts on the current speed limits and if they feel right for these areas.



MAP SHOWING THE PROPOSED SH1 FLYOVER, CHANGES TO INTERSECTIONS AND RAIL NETWORK



MAP SHOWING TRAFFIC FLOW AND TRAFFIC TYPE

The proposed changes will make it safer for local people – cycling, walking, on buses or in cars – to cross the highway and travel between and around the residential side and the industrial hub of Rolleston. Traffic will also move more efficiently as a result of the upgrades.



FOLD HERE

FreePost Authority 255777



Rolleston projects
Waka Kotahi NZ Transport Agency
PO Box 1479
Christchurch Mail Centre
Christchurch 8011
 Attention: Fiona McLeod