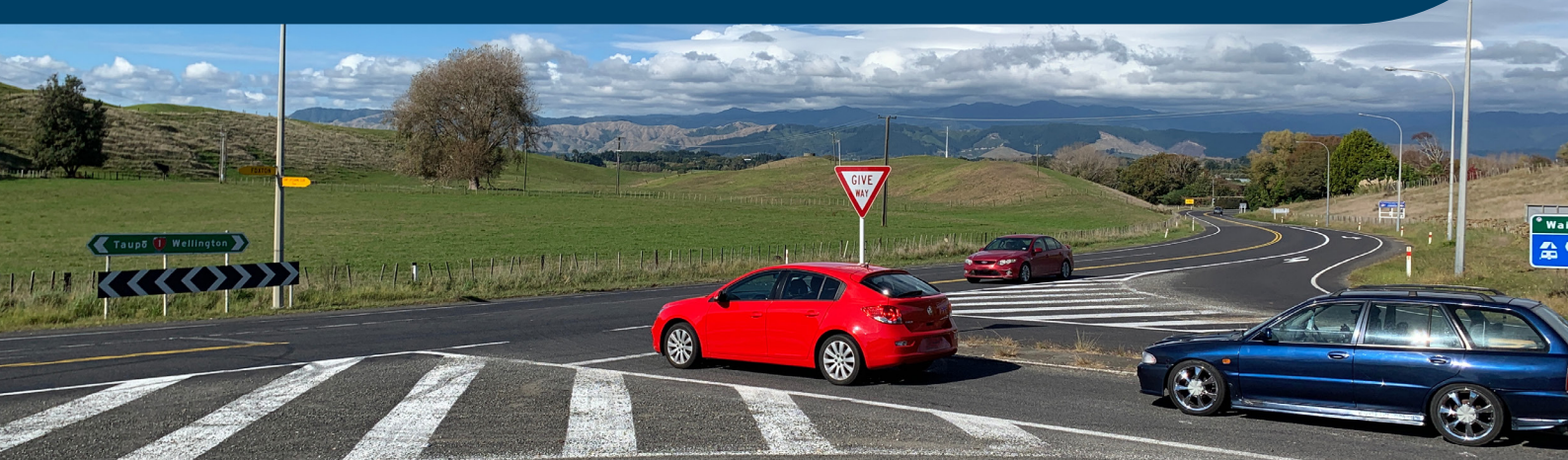


1 Levin to Foxton safety improvements



Making State Highway 1 between Levin and Foxton safer for everyone

We're improving the safety of State Highway 1 (SH1) from Levin to Foxton while we work to deliver the new highway from Ōtaki to north of Levin. Once the new highway is complete, these safety improvements will keep people safe while they transition to a different driving environment.

To make the road safer for everyone now and once the new highway is open, we're going to install a roundabout at the intersection of SH1 and Waitāre Beach Road, stretches of painted wide centreline, roadside and median barrier and new turnaround facilities.

Construction being completed in stages

The safety improvements will be constructed in four stages. These are:

Stage 1 – Foxton to the Manawātū River Bridge

Flexible median barrier will be installed along this stretch with a turnaround facility constructed at the southern entrance to Foxton.

Construction of Stage 1 improvements is underway and is due to be completed by mid-2024.

Stage 2 – Manawātū River Bridge to the Koputaroa intersection

Flexible median will be installed along this stretch with a gap at the entrance to Mitchpine Mill and turnaround facilities at Oturoa and Koputaroa roads. Sections of the road will be widened to make room for the median barrier. A small section of side barrier will also be installed on the southbound lane just south of the Oturoa Road intersection to prevent vehicles driving into a ditch.

Construction of Stage 2 improvements is underway and is due to be completed by early 2025.

Stage 3 – Koputaroa Road to Kawiu Road

A roundabout will be constructed at the Waitāre Beach Road intersection with small stretches of flexible median barrier installed at the northern and southern roundabout entries. A small section of side barrier will be installed on the southbound lane north of the roundabout to prevent vehicles driving into a concrete brick wall. A right turn bay will also be installed outside Poroutawhao School.

Stage 4 – Kawiu Road to Levin

The road will be widened to allow a wide centreline to be installed. Side barrier will be installed along most of the southbound lane, with two smaller stretches also installed on the northbound lane to prevent vehicles driving into roadside ditches.

Construction of all the improvements is due to be complete by mid-2027.

What the improvements will look like

This map shows the safety improvements that will be made to this stretch of SH1, including a roundabout at the intersection with Waitāre Beach Road, stretches of painted wide centreline, roadside and median barriers and turnaround facilities.

Roundabout

The growing Waitāre Beach community will be safely connected to the wider road network with a new roundabout at the intersection of SH1 and Waitāre Beach Road.

Roundabouts reduce speed of all vehicles, making it easier for you to choose the right time to enter flowing traffic. The new roundabout will include concrete lane separation on all approaches and space for people to cycle around the intersection away from people in vehicles.

Roundabouts help protect people on our roads by lowering the risk of a high impact crash. They reduce the number of points where you could potentially collide with another vehicle, and if you do, the angle and impact speed are more forgiving than in some other intersection layouts.

Median barrier

Flexible median barrier is a key part of this project that will help save people's lives.

Flexible median barrier will be installed from Foxton to the Koputaroa Road intersection, with gaps at the turnaround facilities and at the entrance to the Mitchpine Mill. It will also be installed before and after the roundabout at the intersection of Waitāre Beach Road.

This will mean people entering the highway from a private access or side road where the median barrier is installed will turn left. People who need to turn right will be able to use the new turnaround facilities.

Median barriers are a cost-effective infrastructure treatment that can reduce the number of people killed or seriously injured in crashes by 65%.*

Turnaround facilities

Turnaround facilities will be constructed to provide people a safe place to turn right across the highway in locations with median barriers.

A large turnaround is already available underneath the Manawatū River Bridge on Matarakapa and Whirokino Roads. Three more sign-posted turnaround facilities will be installed: at the southern entrance to Foxton for people heading south, at the Oturoa Road intersection, and on the eastern side of SH1 at Koputaroa Road.

Roadside barriers

A small number of roadside barriers will be installed at high crash risk locations south of the Manawatū River Bridge through to Levin.

Side barriers are designed to stop cars from going further off the road and hitting something harder, like a power pole, tree or ditch.

We will make space on the shoulders of the road for people on bikes by widening the road where we can and setting barriers as far back as possible.

We will also create space on the road so people driving slower, and agricultural vehicles can pull over and stop.

Painted wide centrelines

Sections of wide painted centrelines will be added to long stretches of this road.

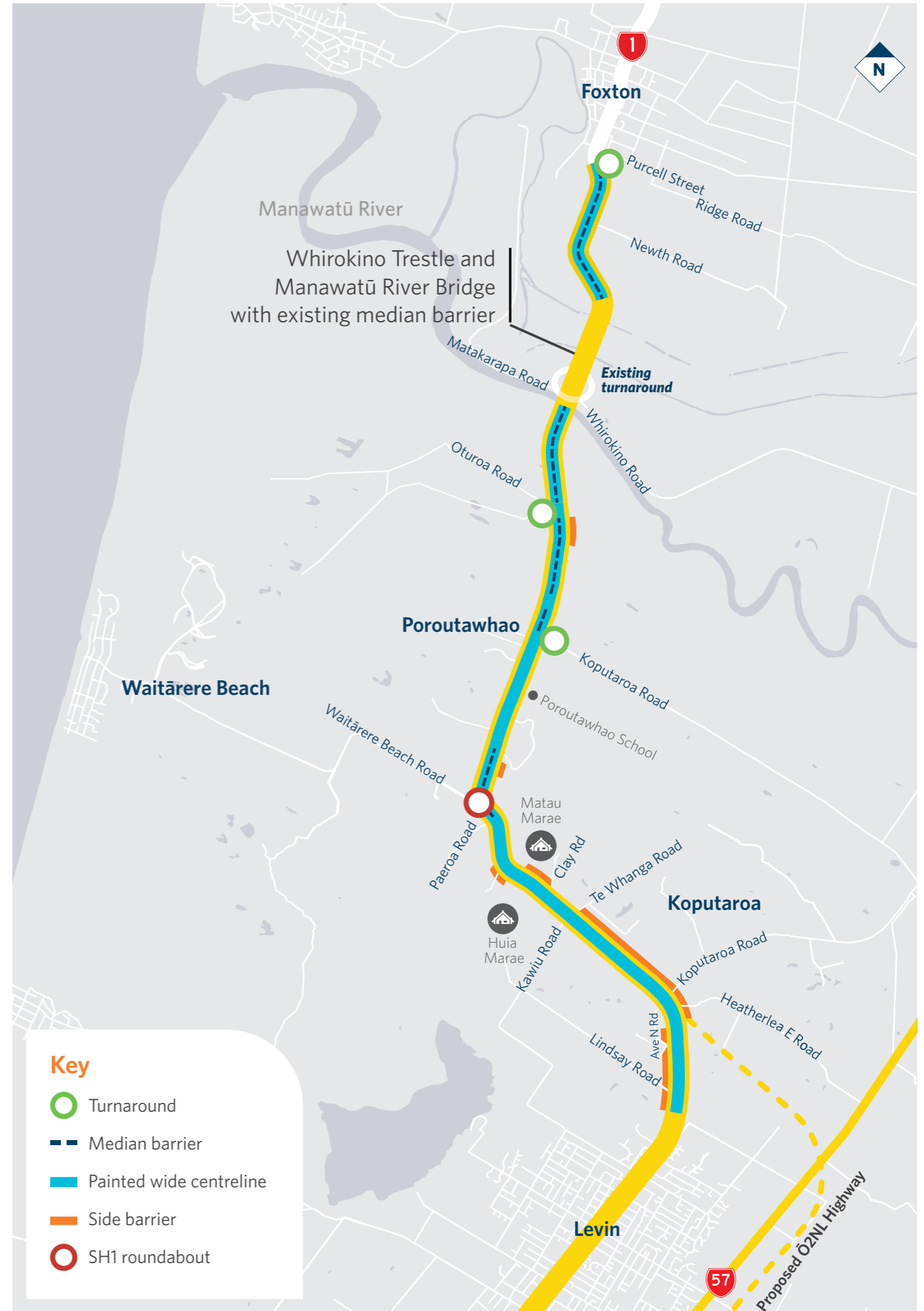
By creating more space between people travelling in opposite directions, wide centrelines can reduce crashes resulting in deaths and serious injuries by up to 35% because people have more time to correct a momentary lapse in concentration.*

*Standard Safety Intervention Toolkit, (September 2021).
Waka Kotahi NZ Transport Agency.



Turnaround facility construction site.

What the improvements will look like

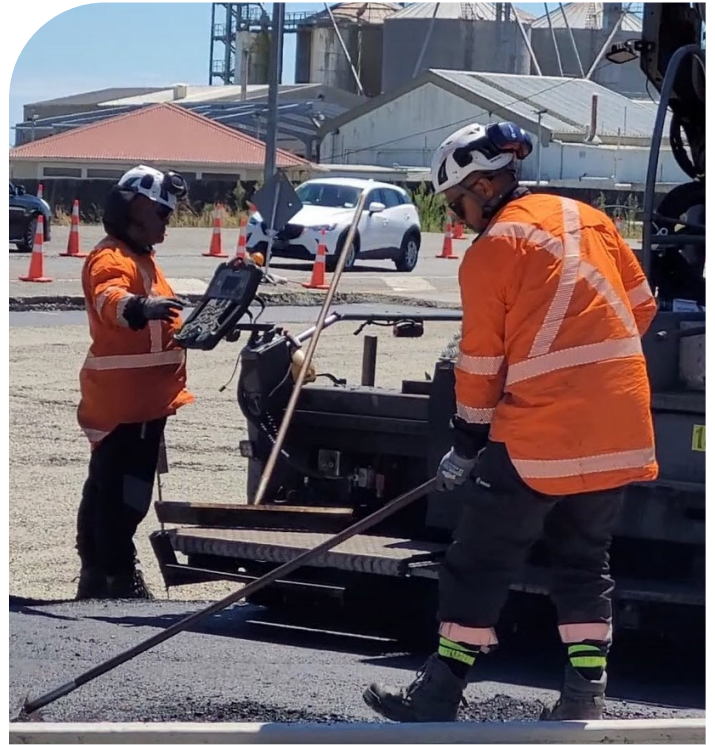


Progress on the Foxton turnaround

Our contractor is making great progress on construction of the turnaround facility at the southern entry to Foxton and are due to have the turnaround completed and median barrier installed by the middle of the year.



Removal of the old traffic island.



Laying asphalt for the turnaround facility.

The road is being resealed and re-marked as part of the construction of the turnaround facility.



Have questions? Get in touch.

To provide feedback or ask questions about the project, please get in touch with us using the contact details below.

Website: nzta.govt.nz/levin-to-foxtton

Phone: 0508 625 4636

Email: O2NL@nzta.govt.nz