



# Russley Road Upgrade

part of the Western Corridor

## Ryans Road/Russley Road (SH1) temporary intersection restrictions

As you may know from earlier project information, the turning bay on Russley Road into Ryans Road is not being re-opened. (This is because an independent safety audit found that traffic in this area is too heavy and fast to make this right turn a safe option).

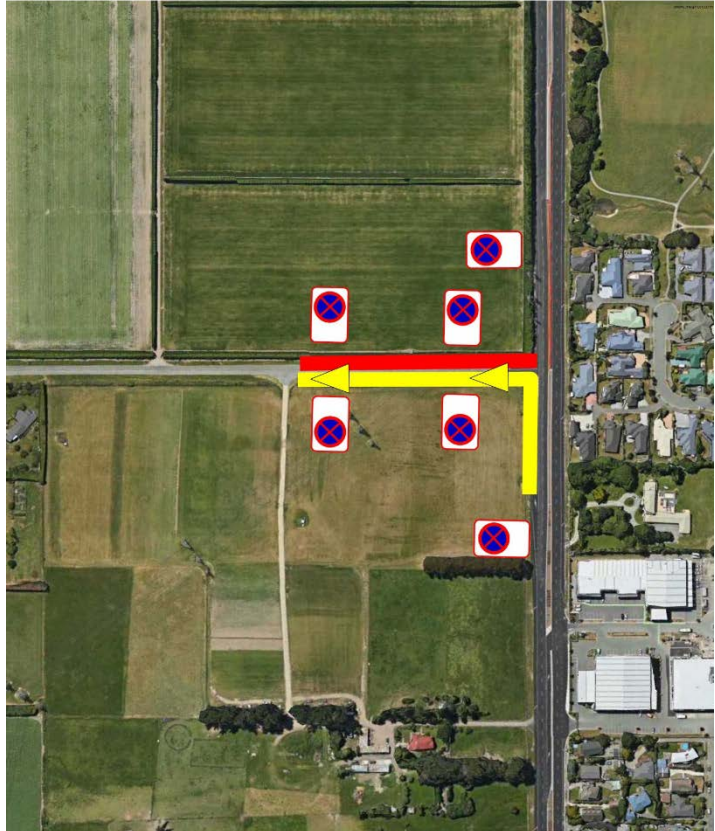
Work to realign the road shoulder and close the central island is about to start.

To allow this work to be done safely we need to temporarily reduce a section of Ryans Road, near the Russley Road intersection, to one-way. (This is shown in yellow).

This will mean east bound traffic on Ryans Road will not be able to turn left out of Ryans Road and will be detoured via Grays Road and Avonhead Road. (A plan of this detour is shown on the map over the page).

The left hand turn into Ryans Road, from Russley Road will remain open.

*Interim layout for Ryans Road/Russley*



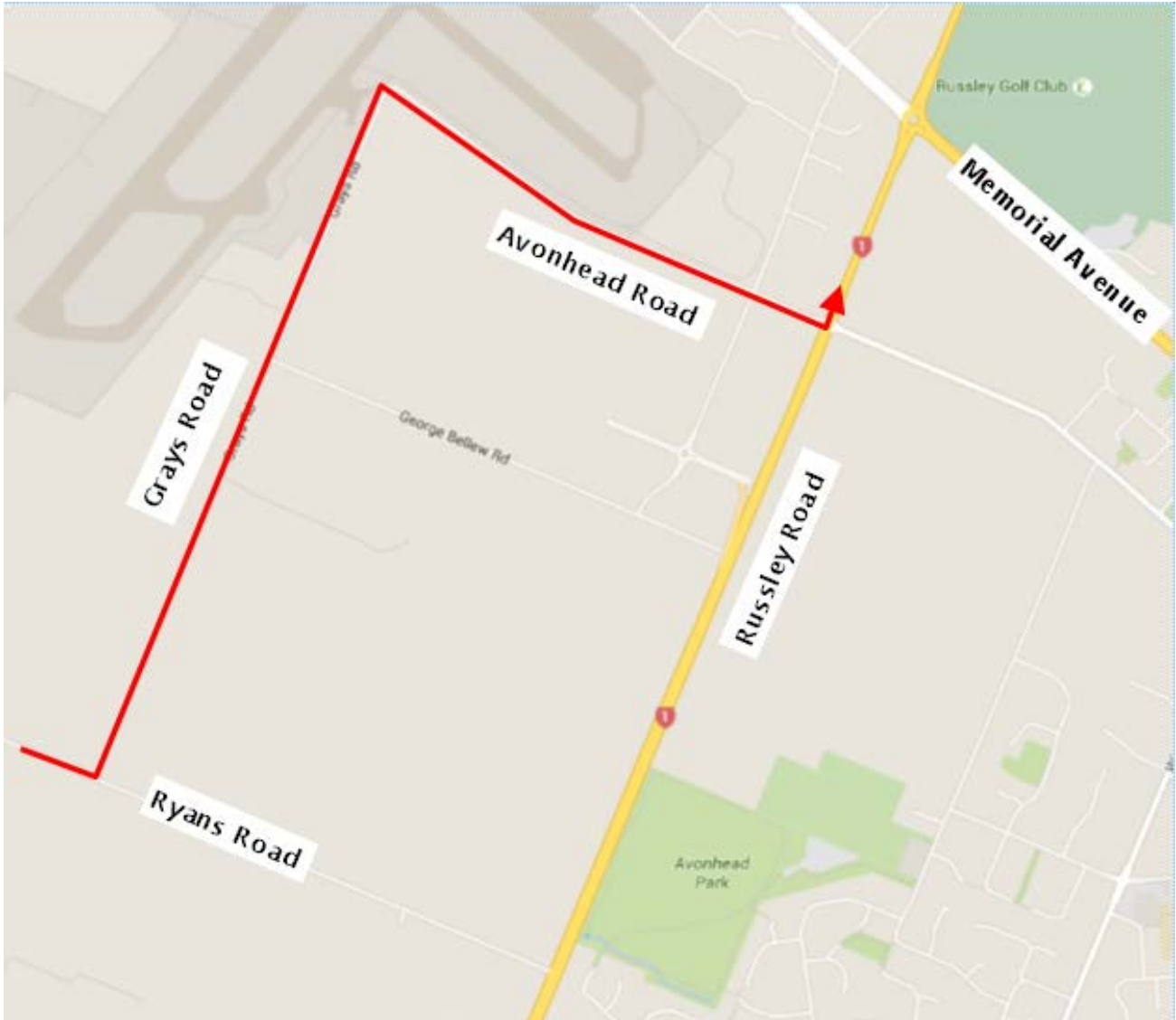
*Road intersection*

There will also be parking restrictions along Ryans Road and Russley Road near this intersection to ensure the safety of both the public and our crews (These restrictions will include parking behind the yellow lines on the grass verge). The parking restrictions are shown on the above diagram.

**The initial temporary traffic management changes will be in place from Monday 23 November 2015 for approximately four weeks to allow for the widening of road shoulder.**

Over the Christmas period these restrictions will be removed until work to close the central island starts in mid-January 2016. Work on the central median will need similar traffic management restrictions and will take approximately two months to complete.

The final stage of this work will require a temporary closure of the Ryans Road/ Russley Road intersection but we will provide more information on the timing of this in the New Year.



*Temporary detour for east bound traffic*

Thank you once again for your patience and co-operation while we complete this project. For more information on this or any part of the Russley Road Upgrade please contact our Communications Advisor, Jessica Riordan on 021 702 783.