

This information outlines what you can expect during the remainder of Stage 1 work on the Gray and McBride Street intersection

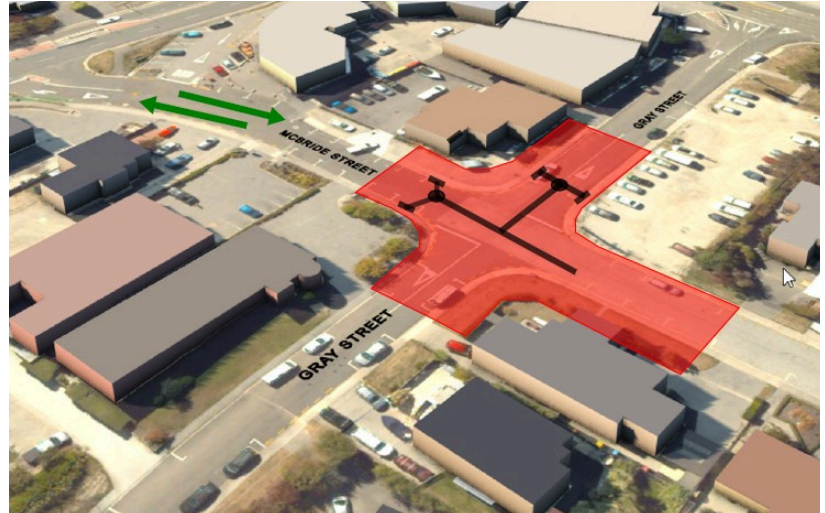
What	WORKS UPDATE: Excavation for stormwater upgrade at Gray and McBride Street intersection
When	From 7 October for four weeks
Where	Gray-McBride Street intersection

What's happening?




We need to close the intersection of Gray and McBride Streets for trenching work to upgrade the stormwater connections which lie beneath the road.

These connections link the underground pipes that transport stormwater away from built up areas for treatment and release into Lake Whakatipu.

This was originally scheduled to start on Monday 14 October however, we are ahead of time and will now start the work a week earlier on Monday 7 October for four weeks.



KEY

-  Trench location
-  Traffic flow maintained in both directions
-  Work area

General information



Planning and access

Vehicles will not be able to travel the full length of McBride Street, nor the full length of Gray Street, but both streets will be two-way up to the work area. Access into the Frankton Village Shops and carpark, as well as the Gray Street carpark, will be from SH6 Kawarau Road.

Double driveway access to The Doctors Wakatipu is unaffected.

The SH6A Frankton Road end of McBride Street is open for access to Harbour Fish, Life's a Grind Espresso Caravan, RAD Rental Cars, Touchdown Rental Cars, and the Frankton Village underground carpark.



Timing

The excavation work will take place for about four weeks, from:

- **Monday 7 October 2024**

Work will take place during the day.



Traffic management

Traffic management will be set up to guide people using private driveways on the corner of Gray and McBride Streets. Pedestrian access will always be available around the outside of the work site.

Have an on-site issue?

Contractor: Kā Huanui a Tāhuna

Phone: 0800 482 684

Please note: work is weather-dependent, and we'll let you know if we need to change the date of the work.

