

UPDATE to remainder of Stage 1 work on Ross Street, McBride Street, and SH6 Kawarau Road

What	UPDATE: Road closure due to excavation for underground services
When	Tuesday 24 September - Friday 4 October 2024 (weather permitting)
Where	Ross Street, with work in the shoulder of McBride Street and SH6 Kawarau Road

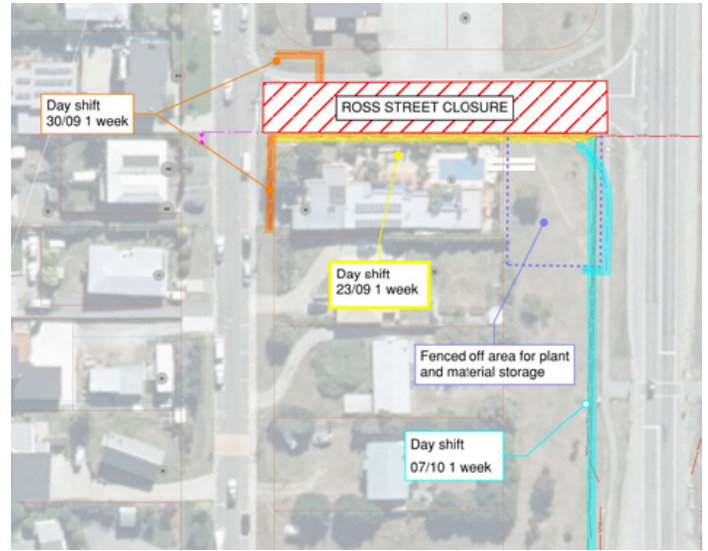
What's happening?

We recently let you know about work happening on Ross and McBride Street. We were able to carry out the nighttime trenching across Ross and McBride Streets, but there have been some delays with getting into the shoulder at the Ross-McBride intersection.

This is due to the rain and snow we've had over the past few weeks, which has caused boggy ground at the Queenstown Events Centre and Frankton Golf Centre, and meant we've been unable to use large machines to trench across their grounds and link up with the Ross Street trench.

What can I expect?

Ross Street will close to traffic as we trench along the street. We will be reopening Ross Street on Saturday 28 and Sunday 29 September only. Access to St Margaret's Presbyterian Church will be maintained from SH6/Kawarau Road.



General information



Planning

We understand that road closures can be disruptive. However, by fully closing the road, we can complete the work more quickly. This will link up to the current work installing a major new Aurora power cable that starts at the Aurora electricity substation on SH6 Ladies Mile, runs along the sports fields and Frankton Golf Course, and will finally link to a main cable in the intersection of Ross and McBride Street. The cable will bolster the security of electricity supply to Queenstown Events Centre, Queenstown Airport, Jacks Point and beyond.



Traffic management

When Ross Street is closed, drivers will need to use McBride Street off SH6 Kawarau Road, or Gray Street. Follow signs and directions of crews.



Timing

The excavation work will take place over about two weeks, from:

- **Tuesday 24 September to Friday 4 October (weather permitting)**

Have an on-site issue?

Contractor: Kā Huanui a Tāhuna

Phone: 0800 482 684

Please note: work is weather-dependent, and we'll let you know if we need to change the date of the work.

Please note, these are our planned dates of work, but they may change if we're able to finish a stage of work more quickly, or if it takes longer due to weather or other circumstances.

