

Unlocking Queenstown's most important intersection



SH6/6A Frankton Intersection and Bus Hub Improvements Project

Work completed in 2024, and looking ahead to 2025

This update highlights our key achievements in 2024 and offers a glimpse into our plans for 2025, as we gear up for transformative construction at the Frankton roundabout in 2026.

We all know that the State Highway 6 and 6A intersection in Frankton (BP roundabout) is at capacity at peak travel times, as well as at other times of the day. Along with improving this intersection for drivers, we need to make it more attractive for people to consider other ways of getting around.

Work started in April 2024 on this Road of Regional Significance project to improve the SH6 and SH6A intersection, to support an efficient and reliable transport network that addresses growth in Tāhuna Queenstown.

Making it easier for people to not only drive but walk and cycle through this area - and for buses to move around - will help to ease congestion and build on already-growing bus use in the region. And through improvements to underground services including wastewater, electricity and communications, Queenstown will better cope with its growing population into the future.

Nine months of work

Getting underway



Queenstown Lions Club members splitting donated logs for a firewood fundraiser

In April, we broke ground on the Frankton Golf Centre side of SH6 Kawarau Road. This was the beginning of a significant programme of work to remove, shift and improve services and utilities that were located under the future road layout of the SH6 and 6A intersection.

One of the first things we needed to do was remove trees on the golf course side of SH6 Kawarau Road and Frankton-Ladies Mile Highway. This gave us necessary space to dig deep trenches for the new services and utility lines, make the golf course entry safer, and provide room for the off-road shared use path and stormwater swale. Several community organisations and local revegetation programmes benefited from the mulch and wood they received.

Major stormwater pipe

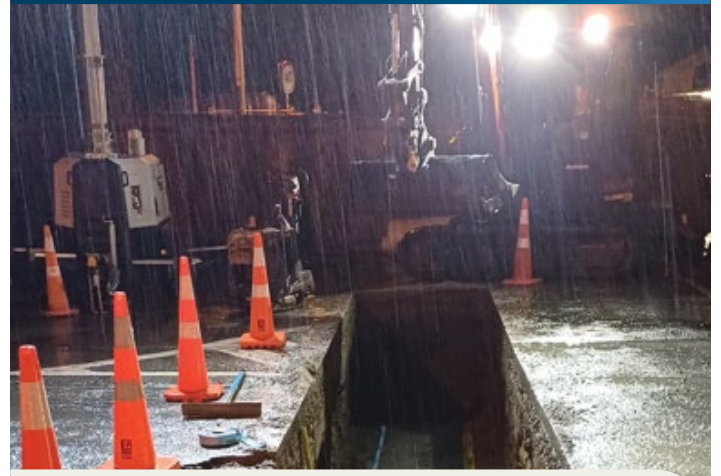


This pipe provides a stormwater outlet for the new layout at the Frankton intersection

We began trenching for a 1.4 diameter, 700m long stormwater pipe. The new pipe runs along SH6 Frankton-Ladies Mile Highway past the Events Centre and down SH6 Kawarau Road. At 5.5m it's the deepest service within our works and was installed first. It will not only take state highway stormwater runoff, but also provides capacity for future land development to the north of SH6. Stormwater is treated to reduce the number of pollutants (such as heavy metals, petroleum and hydrocarbon-based contaminants) that could otherwise enter Lake Whakatipu.

Completed: October 2024

Electricity cables



We needed to close SH6 at night to trench across the highway and lay the power cable

Soon after, work to replace the main Aurora electricity cable and move it away from the state highway began. This major new cable bolsters the security of electricity supply to Queenstown Events Centre, Queenstown Airport, Jacks Point and beyond. It runs from the Frankton Substation at Five Mile, along the sports fields, connects to the Events Centre and airport, and then links into the network at the intersection of Ross and McBride Streets. By taking this route we avoid the need for power shutdowns when we're building the intersection, which would disrupt the airport and residents at Jacks Point.

Completed: October 2024

Pipes, lines and ducts

Queenstown package progress snapshot

Electricity cabling



5.7km of 5.7km of lower voltage cable laid

Gas and other ducting



2.61km of 3.66km of ducting laid

Stormwater pipes



740m of 740m of 1.4m diameter pipes laid

We've also been moving and upgrading numerous utilities and services away from the new intersection layout. Put together, all these services make up about 100 individual pipes and ducts crossing State Highway 6, in 32 individual trenches, with between one and 10 service lines in each. With the state highway being widened, most of these lines need to be shifted out of the way or buried deeper so they're out of the way of the new intersection.

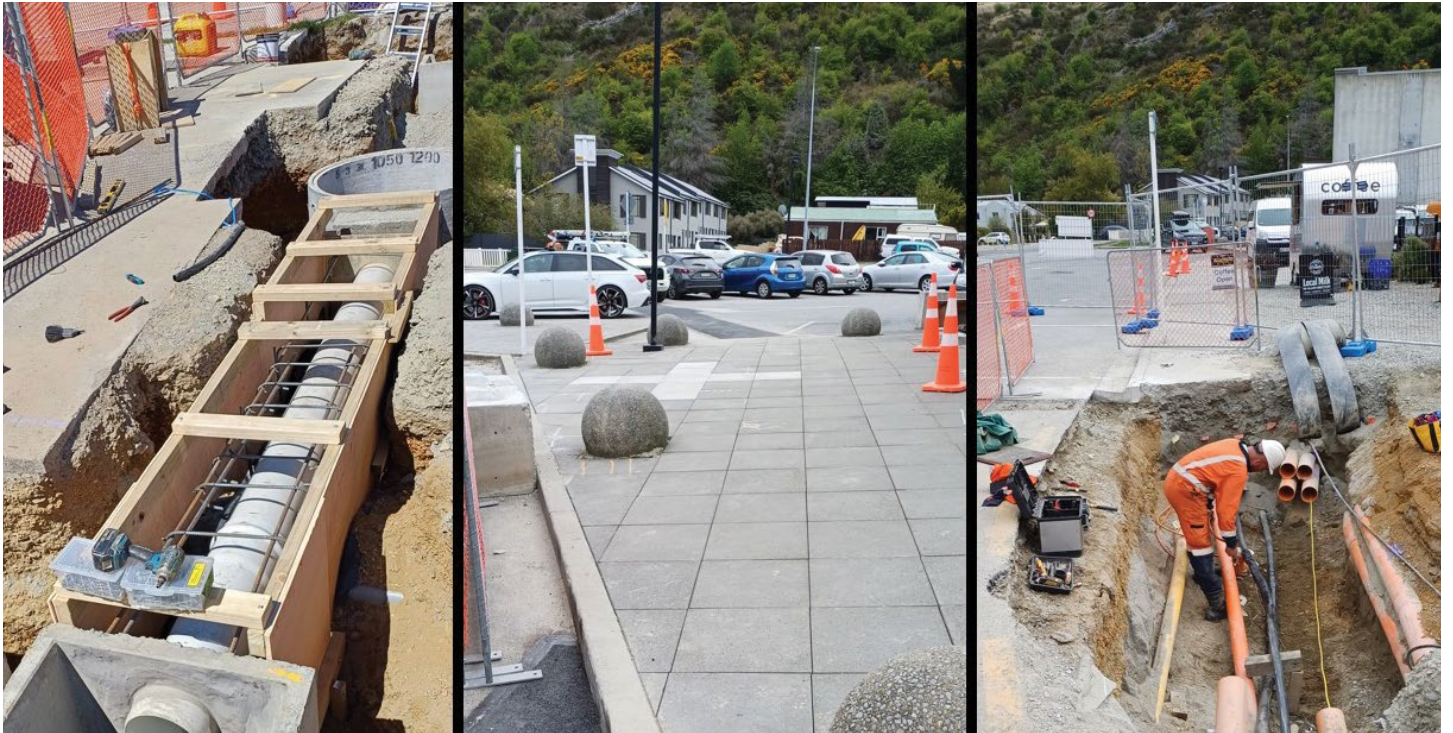


Frankton's new drinking water pipeline installed adjacent to, and underneath, SH6

Gray McBride focus

Undergrounding power and upgrading the stormwater underneath the Gray and McBride Street intersection has been started and will continue until 2025 when parts of Gray Street will be rebuilt. The SH6 end of Gray Street won't be finished completely due to the work to

double the size of the Bus Hub, which will begin in 2025. However, finishing most of the work in this area means there'll be less impact on Frankton Village - people will be able to access shops and businesses here fully before we begin the next section of work.



What lies beneath - lines and services being shifted and upgraded in the Gray/McBride streets area

Early works at Howards Drive



The team worked with Pet Lodge management to make sure that disruption was avoided during the busy pre-Christmas booking period.

We've removed trees and finished installing the new protective fencing around the Ladies Mile Pet Lodge, ahead of schedule. This early activity is in preparation for a future upgrade of the SH6 Frankton-Ladies Mile Highway/Howards Drive intersection, which will improve safety and provide better access to the Lodge.

By completing the fencing early, Ladies Mile Pet Lodge will be well-protected for future construction.

Traffic regulations

We consulted on proposed changes to Traffic Control Devices for the Frankton Intersection and Bus Hub Improvements Project. Traffic Control Devices include the signs, markings and islands that regulate, advise, and guide road users according to New Zealand's traffic regulations. Some examples are stop signs, cycle lanes, no stopping lines, parking and bus lanes.

We received eight submissions and are now working through the final stages of the legal process to introduce the planned changes, through amendments to QLDC and NZTA traffic bylaws.



Looking ahead to 2025

Ground preparation



All the activity in 2024 and much of 2025 is in preparation for concentrated work on the roundabout in 2026, and has been carefully planned and sequenced. From underground, we'll move to above ground - preparing to shift the traffic lanes first one way, then the other, so people can move through construction areas as efficiently as possible while work progresses.

Bolstering core services

In 2025 we'll continue to move and upgrade services that provide water, power and fibre optic to more than half of the Queenstown population. By working with service providers such as Aurora, PowerNet, Veolia and Chorus, we're able to upgrade and improve resilience at the same time as moving the services.

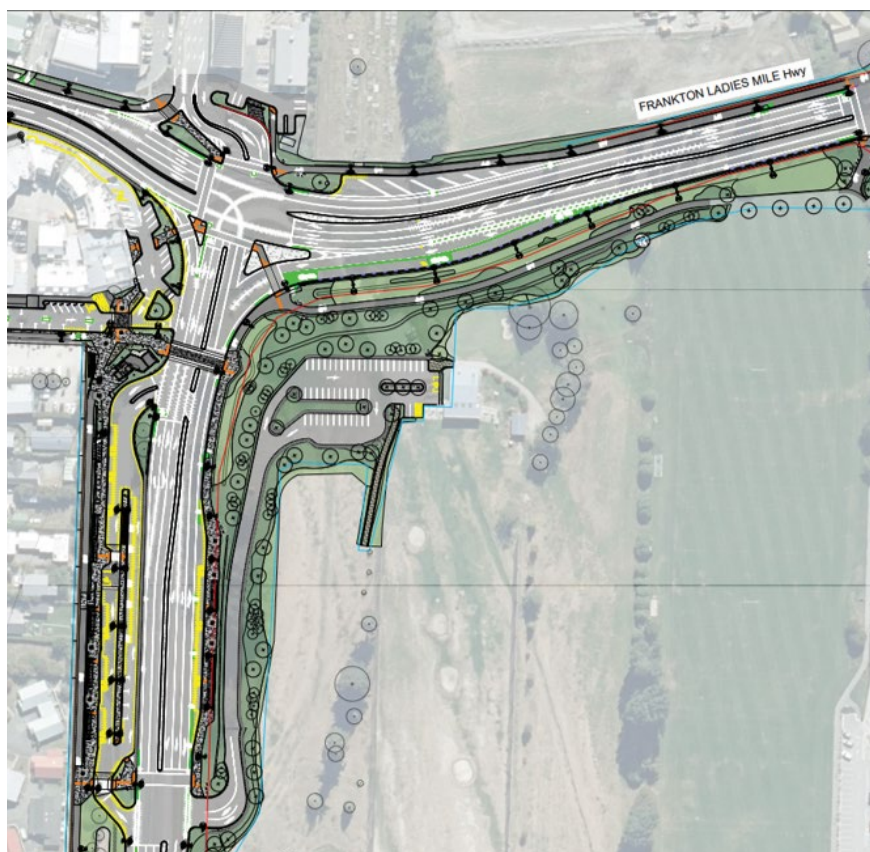
We have three further pipes to install - one stormwater pipe behind the Bus Hub, another stormwater pipe through the Bus Hub and SH6, and an upgraded and bigger wastewater pipe to connect to existing pipes at Ross Street. This pipe takes wastewater from wider Queenstown communities and carries it to the Shotover Wastewater Treatment Plant located on the Shotover Delta. There are also smaller drain connections off the shoulder of SH6 Frankton-Ladies Mile Highway, with some more trenching needed across the state highways. These smaller connections will further help to protect the water quality of Lake Whakatipu.

Frankton Golf Centre

The Frankton Golf Centre entrance and new driveway will be set in its final location and new parking area will be completed in early 2025. With the new 9th hole already in use since autumn, golfers will enjoy having a sealed and landscaped entrance to the facility, that will in time include traffic signals to make the entry safer.

While this is happening, our team will be working with local groups to eco-source seeds to grow on the golf course boundary and other areas where we've been operating. By collecting seeds from native plants that are indigenous to a particular area, the germinated seedlings will be well-suited to local conditions and need less maintenance in future.

A bund featuring dense native grove planting will separate SH6 Frankton-Ladies Mile Highway from the open spaces of the golf course.



Bus hub and weigh pit

We're in regular contact with the many operators who use the Bus Hub area. We'll continue planning in collaboration with ORC for example, to support their operations and not hinder public transport.

We'll also be moving and extending the weigh pit that sits on the side of SH6 Kawarau Road. Moving it

will make room for the new Bus Hub, and extending it means it can service larger vehicles and loads. We need to remove some trees for this work, but as with the removals at the start of the project, new trees and landscaping will be part of the works at the end of construction, during planting season.



Once built, the new Bus hub will have plenty of room for different operators and services

Laying the groundwork

We're planning two moves for the roundabout, with four main temporary layout changes, to allow space for work in the new signalised intersection to be completed.

To keep two lanes of traffic operating through the Frankton intersection during construction we will use 'lane shifts', which means moving live traffic lanes around our work site. We will begin laying asphalt

(which will look like road widening) around the Frankton roundabout and approaches in preparation for this future work.

Later in 2025, the shoulder widening on the Frankton Cemetery/Country Lane side of SH6 will enable our first lane shift to the north. This in turn will free up room to work on the Events Centre side of SH6.



Sealing all the way to the edge of the highway is in preparation for when we shift traffic onto the old golf course land in future stages

Hansen Road link

In 2025, depending on progress, we may look to fully develop the link road between Hansen Road and SH6 Frankton-Ladies Mile Highway, in preparation for construction work along this stretch. There are benefits to doing this earlier than originally planned, including allowing for an additional bus lane on SH6, staggering the work areas (so less traffic management), providing a safer crossing point for people on foot or cycling, and accommodating a new stormwater crossing.

Keeping traffic moving

We'll continue working closely with locals to minimise the effects of construction on residents, businesses, emergency services, public transport, community groups and other service providers. Disruptive works will be completed at night where possible, with limited specific times for SH6 shutdowns if a road closure is unavoidable. We've planned it this way so we can complete necessary work in a way that Queenstown traffic levels can handle, as much as possible.

With more traffic management in active lanes in 2025, it's important that everybody who uses the road takes extra care coming into the roundabout past the work areas.

Our Alliance STMS Debbie Meek visited Kingsview School for Road Safety Week in May, sharing the message that everyone can be a 'road safety hero'. Let's all do our bit to help our traffic management staff get home safely each night.



Our Alliance STMS Debbie Meek visited Kingsview School for Road Safety Week in May, sharing the message that everyone can be a 'road safety hero'. Let's all do our bit to help our traffic management staff get home safely each night.



Keep up to date

In 2025, we'll continue to keep you informed along the way:

- NZ Transport Agency Waka Kotahi - Otago and Southland Facebook page.
- NZTA website www.nzta.govt.nz/projects/queenstown-package
- Leaflet drops in the immediate area.
- The Kā Huanui a Tāhuna e-newsletter, depending on the timing.
- QLDC Facebook page for local road updates.
- You may also see us out in the community door knocking or on a stall at the Remarkables Market. Please come and say hello!



More information

Sign up for our regular newsletter at www.nzta.govt.nz/projects/queenstown-package

If you'd like to receive upcoming work notices for this project, please email info@wtpa.co.nz with work notice in the subject line.

Get in touch

Email info@wtpa.co.nz
phone 0800 482 684

Or write to us at:

NZ Transport Agency
Queenstown Package
Level 2, AA Centre
450 Moray Place,
Dunedin