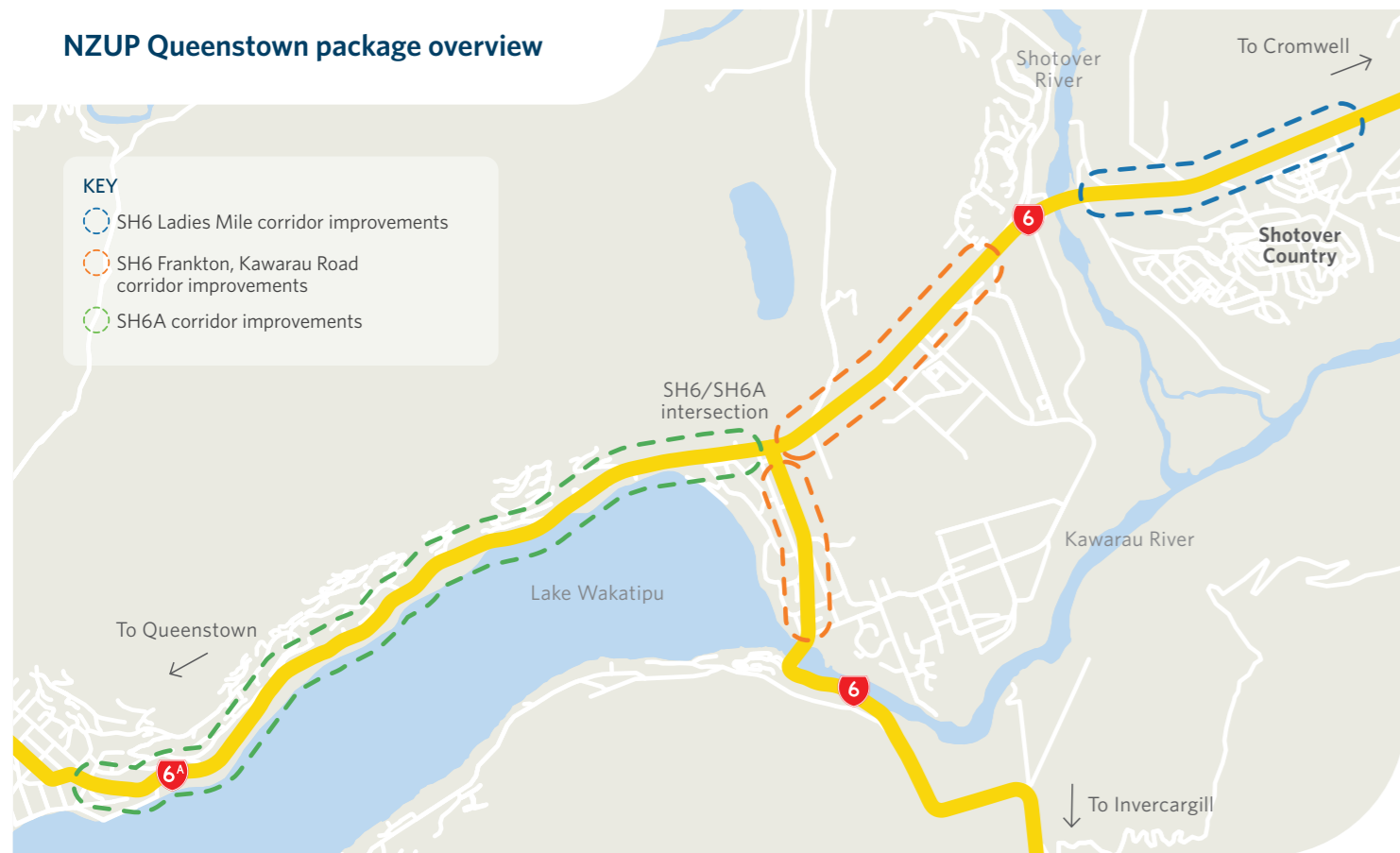
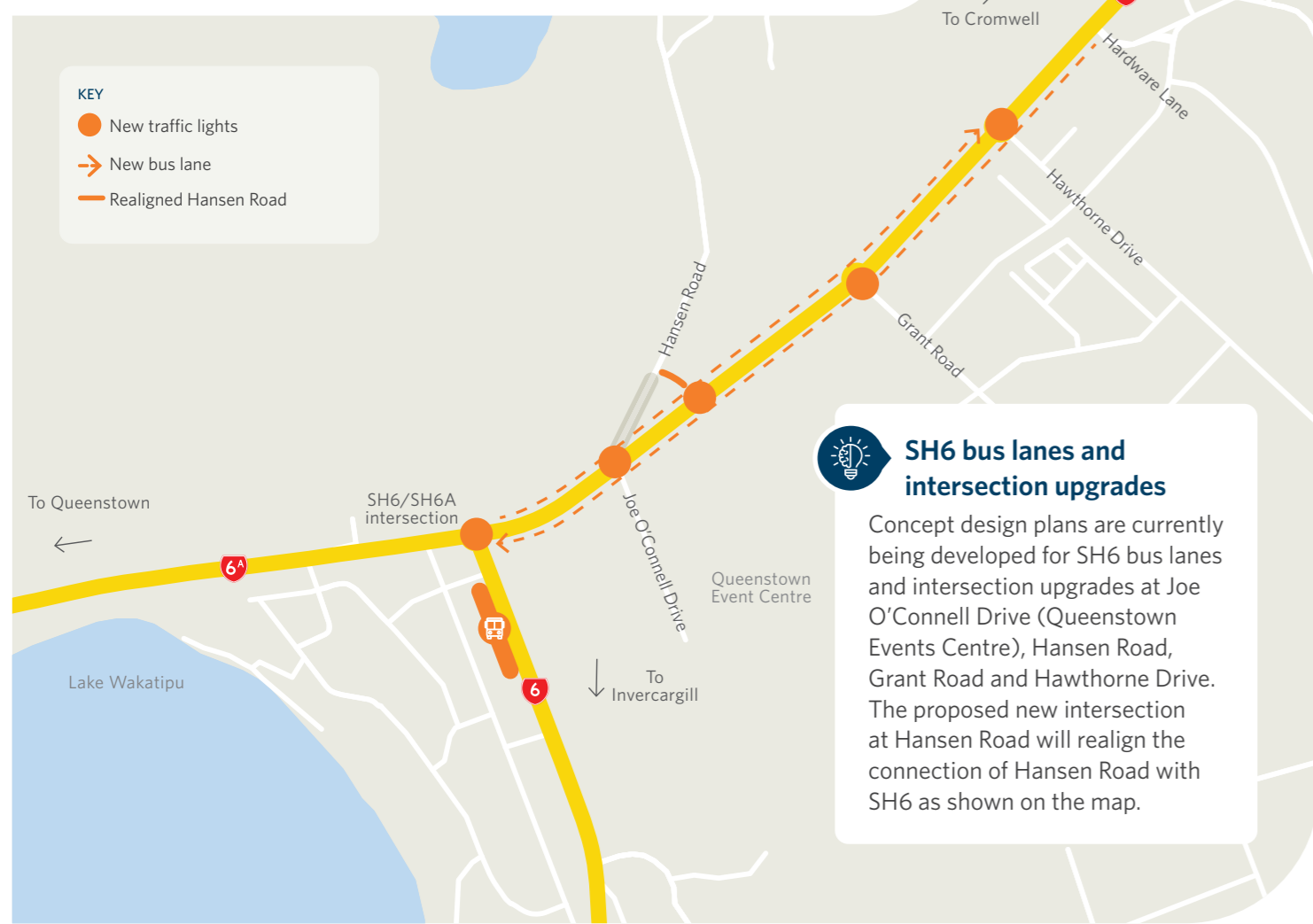


NZUP Queenstown package overview



NZUP Queenstown package SH6 Frankton corridor improvements

(Hardware Lane to SH6/SH6A intersection)



NZUP Queenstown package SH6A corridor improvements



New Zealand Upgrade Programme Queenstown Package



The aim of NZUP Queenstown is to give locals and visitors more choices for getting around this beautiful area, with better access to public transport and improved, safer connections for those who wish to walk or ride their bikes. While most of these are still in the planning stage – we want to share some early plans.

Overview

The Queenstown Package will provide dedicated public transport infrastructure and support people to choose different ways to travel that are both healthier and better for our environment. That includes bus priority measures on State Highway 6 and State Highway 6A, bus lanes on SH6, improvements to the existing Frankton bus hub, improvements to the SH6A/SH6 intersection, pedestrian access improvements across SH6 and SH6A and a new roundabout at Howards Drive.

The growth in Queenstown's resident and visitor population,

together with a high dependency on private vehicle travel, has compounded traffic congestion and delays.

This project is not focused on increasing space for private vehicles on the road as space is very constrained in Queenstown, particularly along Frankton Road. Instead, the priority is public transport and cycling infrastructure to move more people in the space we have. Waka Kotahi is working closely with our partner, Otago Regional Council, to support them in delivering additional public transport services.

Project at a glance

Waka Kotahi is delivering the Government's \$8.7 billion New Zealand Upgrade Programme, which will provide growing communities across the country with better travel choices that help people get where they're going safely.

The Queenstown Package includes the following proposals;

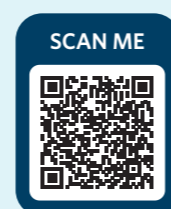
- new bus lanes on SH6
- new bus priority measures on SH6A
- improved pedestrian access to public transport
- improved safety and access across the network with a focus on walking and cycling
- improvements to existing Frankton bus hub
- intersection upgrades at SH6/6A intersection, Howards Drive, Hawthorne Drive, Grant Road, Hansen Road, Joe O'Connell Drive (Events Centre), Lucas Place, Humphrey Street, Marina Drive, Goldfield Heights and Hensman Road.

Online Drop-in Sessions

We are planning online drop-in sessions in the coming weeks. If you are interested in attending one of these sessions please email info@wtpa.co.nz to register.

Keep up to date

To receive regular updates on the Kā Huanui a Tāhuna projects which includes NZUP and other QLDC projects, please sign up to our newsletter using the following QR code:



Get in touch

You can write to us at:

Waka Kotahi
NZUP Queenstown Package
Level 2, AA Centre
450 Moray Place
Dunedin

Or visit us online using the following QR code:



Queenstown Package

New Zealand Upgrade Programme

Community engagement was undertaken in January 2019 and again in June 2020. Discussion was focused on emerging options for the Queenstown Town Centre, SH6A (Frankton to Queenstown) and Frankton. This included questions around roading, public transport, parking options and recreational facilities. This information was used to investigate options and led to the development of the Queenstown New Zealand Upgrade Programme in partnership with Otago Regional Council and Queenstown Lakes District Council.

The programme consists of a series of projects which are at various stages of design and planning. However, we estimate construction will start on some elements by the end of the year.

Project partners

The works are being delivered for Waka Kotahi via the **Kā Huanui a Tāhuna** alliance. This is a partnership between Waka Kotahi, Queenstown Lakes District Council and four design and construction companies, Beca, Downer, Fulton Hogan, and WSP. It has been gifted the name by Iwi.

Kā Huanui a Tāhuna encapsulates the significance of this union and the projects which will be delivered.

Huanui is the word used by Kāi Tahu to describe pathways and roads. Tāhuna is the original name for the ancient settlement that is now overlain with the urban form of Queenstown. It can be variously translated as:

- The pathways of Tāhuna
- The great outcomes of Tāhuna
- The many fruits of Tāhuna.

Project stages



Early concept designs



Early stakeholder engagement



Design development

(including resource consent and property requirements)



Community engagement



Finalise designs



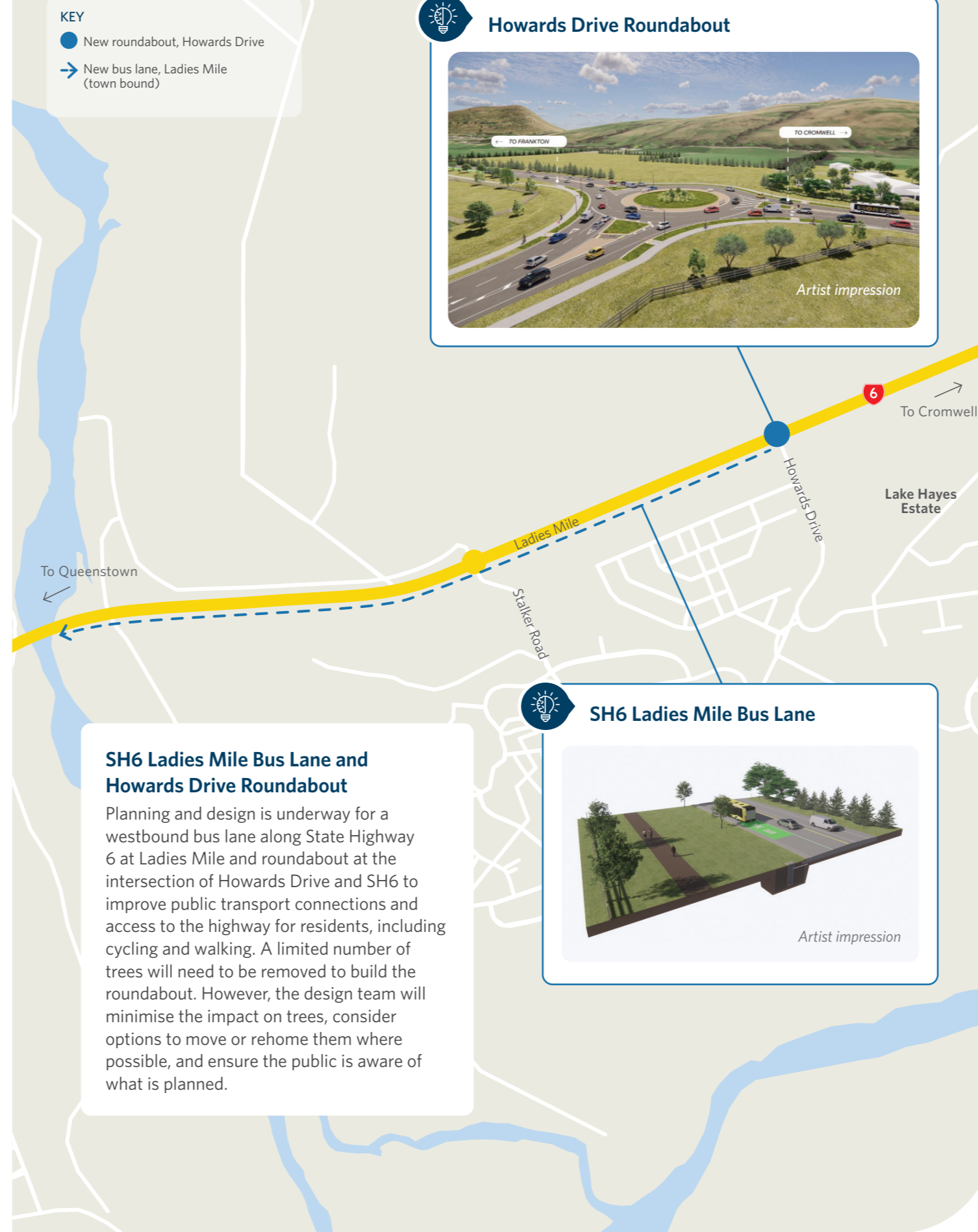
Construction

Some elements are further through design than others; our aim is to keep the community updated as we move through these phases. If you will be affected by any of the projects i.e. you have a business or a residence in the immediate project area we will be in touch with you directly. However, this is a first step in keeping you updated as it provides you with an overview of the whole programme that is to be delivered over the next four years. Most of this year will focus on design and consenting with a couple of projects starting construction. The timing of the works is subject to resource consent and property negotiations.

Project aims

- Improving options and encouraging locals and visitors to change how they travel around the district.
- Reducing reliance on private vehicles.
- Encouraging greater use of the public transport network and walking and cycling
- Reducing the impact of travel on the environment.

SH6 Ladies Mile corridor improvements



NZUP Queenstown package SH6 Frankton corridor improvements

(SH6/SH6A intersection to Humphrey Street)

