



**Kā Huanui  
a Tāhuna**

## **Huanui pānui**

(paths and roadways newsletter)

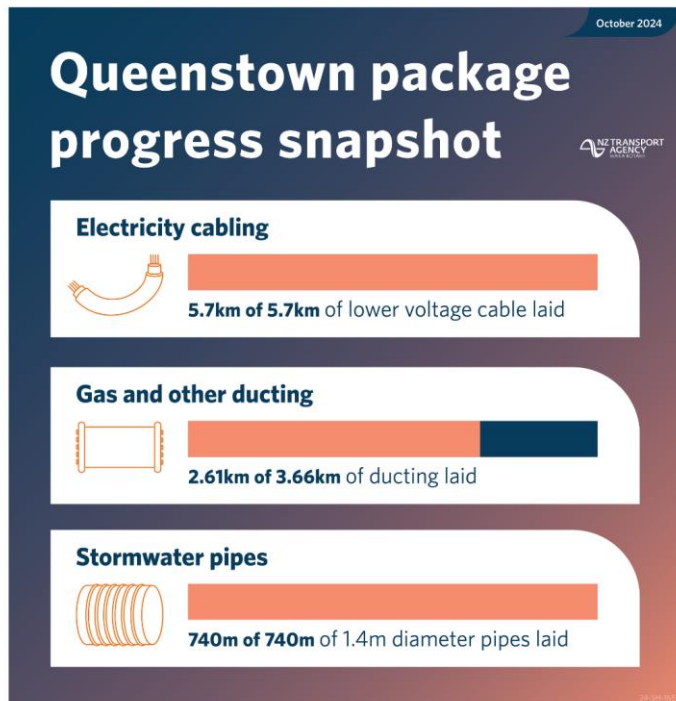
*Kā Huanui a Tāhuna is an alliance partnership between NZ Transport Agency Waka Kotahi (NZTA) and Queenstown Lakes District Council (QLDC) along with four design and construction companies, Beca, WSP, Downer and Fulton Hogan.*

**24 October 2024**

Kia ora koutou

It's all systems go now that we're into the final quarter of 2024, with key pieces of work happening around Tāhuna Queenstown. Some will be completed by Christmas while others will help set us up for a solid start in 2025.

In this month's edition we're pleased to report that we've finished laying the large diameter stormwater pipeline for the Frankton Intersection and Bus Hub Improvements project, as well as the major 5.7km long Aurora power cable. Although several connections still need to be made, this marks a significant milestone in the project.



*Left, October underground utilities progress snapshot, and right, the final trench on Ross Street completes the high voltage cable loop with Frankton Road.*

Our attention now turns to upcoming night work on SH6 Frankton-Ladies Mile Highway between the roundabout and Joe O'Connell Drive, which is needed to install the new drinking water pipeline, as well as the beginning of rebuild work at the Gray and McBride Street intersection.

Our activities on the new Town Centre Arterial Road are also progressing well as we move into the final part of the year. There's an update on the last piece of asphalt on Frankton Road, the Sydney-Melbourne Street intersection rebuild, and a neat fly-through video showing what's involved with the major stormwater upgrades on Ballarat Street and the Stanley Street intersection.

Wishing you a safe and enjoyable Labour weekend,

Kā Huanui a Tāhuna team

## SH6/6A Frankton Intersection and Bus Hub Improvements Project

Due to the freezing ground temperatures in Queenstown over winter, we're unable to build or surface roads that meet strict quality standards. Now that the weather is warmer, we have a comprehensive programme of work underway.

Not only are we rebuilding the road and footpaths where our underground upgrades are complete, but we're preparing for work on the SH6/6A intersection later in 2025.

With road construction season underway, we've considered local shops and businesses as well as Queenstown Airport and the Queenstown Events Centre (QEC) and planned around large events in the area. We know the importance of keeping traffic moving while we carry out our work.

Check out our latest fly-through video here:



## Night work ahead as focus shifts to drinking water

From next Sunday night, 3 November, we'll begin installing a new, larger drinking water supply across SH6 Frankton-Ladies Mile Highway.

To carry out this work, we need to close a section of the highway at night for about four weeks (excluding Friday and Saturday nights) so we can upgrade, connect, test and activate the new pipelines under and around the highway and Gray Street.

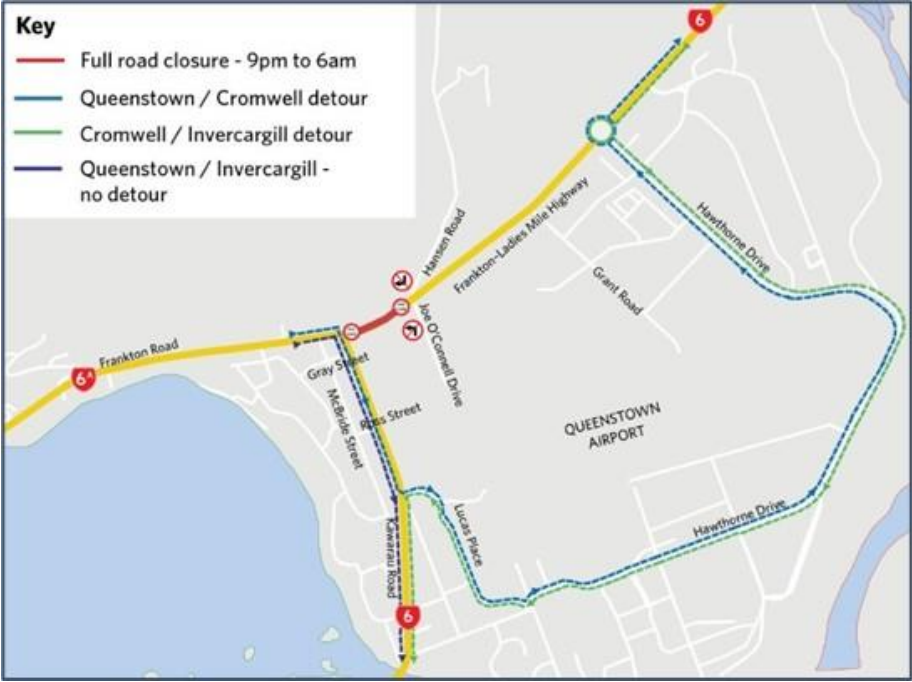


*By replacing the existing 250mm water pipe with a new 400mm diameter pipe, we're providing increased capacity to cater for future development and demand.*

Access to Joe O'Connell Drive and Hansen Road remains open, including for QEC gym members and people registering for, participating in, or supporting the Queenstown Marathon on 15-16 November.

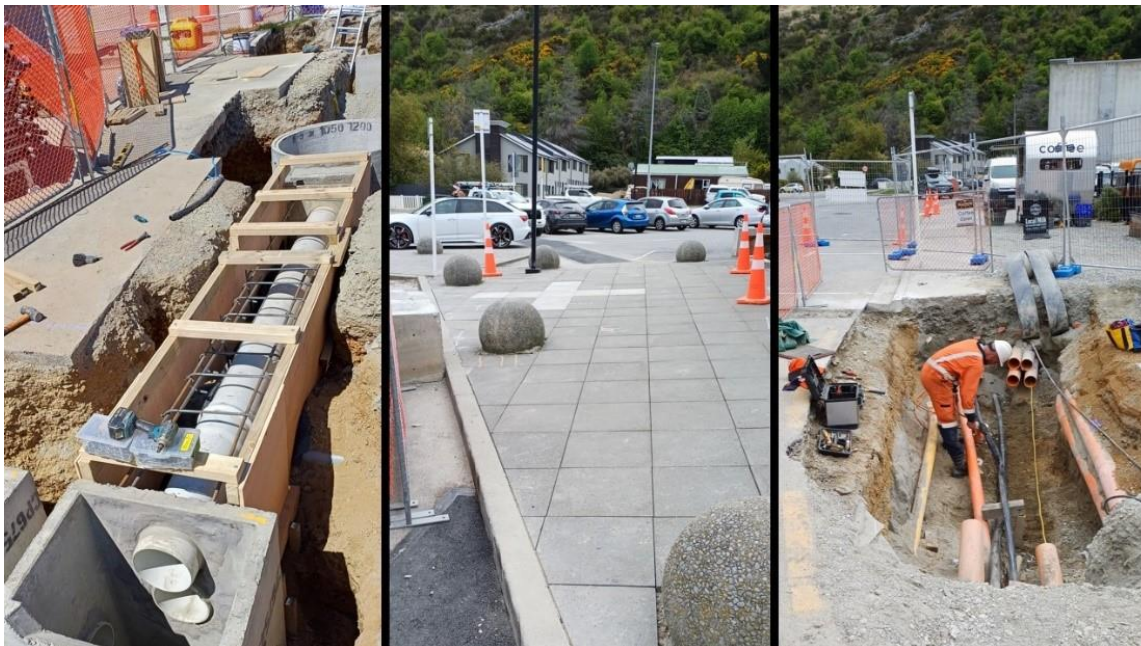
We're also upgrading and extending 90 metres of Chorus fibre optic cable in a trench between Frankton Cemetery and Hansen Road, to boost the resilience of this line.

We need to do this work at night as shutting this busy state highway during the day and detouring traffic via local roads would be too disruptive. Also, water supply shutdowns should only happen at night to minimise the impact on people and businesses.



*Hawthorne Drive around Queenstown Airport is the key detour when the section of SH6 Frankton-Ladies Mile Highway is closed.*

## Gray and McBride Street progress



*The Gray-McBride intersection remains closed until early November.*

Our trenching for the stormwater upgrade at Gray and McBride Streets is on track for the intersection to be reopened on Monday 4 November. Until then, people can keep reaching local businesses and carparks via the SH6A Frankton Road end of McBride Street, and the SH6 Kawarau Road end of Gray Street.

As there'll be lots of people around this coming Labour weekend (26-28 October) and next week, we won't excavate across driveways during this time. Also, as we've finished more trenching work in the road, we've been able to reinstate additional on-street carparks on McBride Street. This will make it easier for people to get where they need to around Frankton.

---

## Key step for power supply



*We'll be removing overhead powerlines and poles on Gray and McBride Streets in early 2025. We recently placed the transformer box as part of this work.*

---

## From underground to above-ground

With underground work complete, from Monday 4 November through to Friday 20 December we'll be rebuilding kerbs, footpaths and roads, and installing new street lighting on the western side of the Gray-McBride Street intersection. One lane will stay open for traffic heading north on McBride Street.



*This map shows our work area for the next two months.*

There'll also be a small piece of night work at the SH6 Kawarau Road end of Gray Street, with the area closed to complete the connection of the upgraded water main that links with the SH6 Frankton-Ladies Mile Highway line.

The work will be done over two nights (starting on the evening of Tuesday 12 November, ending on the morning of Thursday 14 November, weather permitting) but the area will remain closed during the day.

Customers will be able to get to the Frankton Village shops from the normal entrance off SH6 Kawarau Road, and into Gray Street via McBride Street. McBride Street is one way heading towards SH6A Frankton Road.

---

### **Early work at Howards Drive completed**

We've removed trees and finished installing the new protective fencing around the Ladies Mile Pet Lodge, ahead of schedule.



This early activity is in preparation for a future SH6 Frankton-Ladies Mile Highway/Howards Drive roundabout, which will make this intersection safer and provide better access to the Lodge from the north side of the roundabout.



*The new fence built at the Ladies Mile Pet Lodge, completed in time for holiday bookings.*

We've appreciated working closely with Ladies Mile Pet Lodge management, who recently provided this feedback:

***“Given the sensitive nature of our business, taking great care of dogs and cats, we’re pleased that this work has gone to plan and with disruption minimised.***

***“Ladies Mile Pet Lodge will be well protected for future construction works in this area. Completing work in time for November’s bookings, when summer holiday bookings build up, has been important to us. Thanks to the team.”***

---

## For more information

Full details about the SH6/6A Frankton Intersection and Bus Hub Improvements project can be found at our website, [Queenstown package | NZ Transport Agency Waka Kotahi \(nzta.govt.nz\)](#).

Contact the project team by emailing [info@wtpa.co.nz](mailto:info@wtpa.co.nz) or by phoning [0800 482 684](tel:0800482684).

To receive Work Notices for this project, please email [info@wtpa.co.nz](mailto:info@wtpa.co.nz) with 'Work Notice' in the subject line.

## Want to talk to us in person?

Come and chat with our team! We'll be at the [Remarkables Market](#) on  
Saturday 9 November

---

## What's the Latest: Town Centre Arterial (Stage 1)



*The Arterial Road is looking good, with footpaths prepared between Beetham and Ballarat Streets.*

---

### October weather plays ball

September was officially the wettest in Queenstown since 1968, with rainfall reaching record levels as reported in this [recent article by The Press](#). Despite the weather-related delays, we are still on track to complete the final layer of asphalt on Frankton Road in November.

This is an exciting milestone for our programme and a further step towards completing the new road and improving access into the town centre. We'll keep you updated if there is any further disruption.



*We've made steady progress on SH6A Frankton Road, building up the different layers of the road.*

---

## **Sydney-Melbourne update**

With drier weather this week, we were able to start rebuilding the road at the Sydney and Melbourne Street intersection.

The first stage is already finished, which involved removing the temporary asphalt on the upper half of the intersection to reveal the permanent asphalt we laid beneath it earlier this year (which in future will match the new height of the intersection).

We've now switched to the lower half of the intersection to build the new road - removing the old surface, excavating then levelling the ground, then building the layers up and testing them before we compact the road to lay asphalt.

Access to Melbourne Street for all residents and businesses is via Hallenstein Street until Monday 11 November, as shown in the map below:



*Above: there'll be changes to access in this area while work is underway, until about 11 November.*



*Above left, new footpaths at the Sydney and Melbourne Street intersection, and right, cobblestone pavers laid on Frankton Road. Work is already underway to install flush crossings and pavers on upper Suburb Street. Once this is reopened, the focus will shift to installing flush crossings and pavers on Dublin Street.*

## Ballarat Street stormwater upgrades

We've made good progress on the Ballarat Street stormwater upgrade since starting work earlier this month. We appreciate your patience with the changes to the road layout and access in this area while this significant piece of work is underway.

If you haven't seen it, check out the video below which shows what's involved in the upgrade:



The piped stormwater network has been carefully designed to capture as much of the water flow from uphill as possible. This helps to reduce potential surface water on the Arterial Road, particularly during more intense rainfall events associated with a changing climate.

These upgrades will improve water quality by treating initial stormwater runoff (which has a higher concentration of pollutants) before discharging it into Horne Creek and ultimately Lake Whakatipu.

Work will continue through to 20 December, note that during this time Lower Ballarat Street will be open for the Queenstown Marathon.

### ***Looking after Horne Creek and our water quality***

Part of this work involves working within Horne Creek. This means we need to take extra care to divert the flow of the creek away from the worksite, allowing it to dewater before any excavation begins.

All excavated material will be removed from the site immediately to minimise the risk of sediment runoff. The excavation will be backfilled as soon as possible, after quality checks are complete, to also minimise potential environmental impacts. The trench surfacing will be reinstated in stages to seal it off from the rain.

### ***Protecting our special heritage features***

The location of this worksite means we will be working near protected heritage features. This includes protected Wellingtonia trees on the corner of Stanley and Ballarat Streets, excavation near the historic courthouse building, and the Ballarat Street bridge.

Work of this nature requires resource consent and special conditions to make sure these important features are protected. Key protection methods include working outside a specific boundary and using an air-vac during excavation to protect tree roots, working closely with a qualified arborist and minimising vibration as much as possible.

---

## **What's coming next?**

**February – April 2025:** Stormwater connection across Stanley Street.

Once we've finished upgrading the stormwater network on lower Ballarat Street, the team will return to complete the final piece of the 'stormwater' puzzle. This involves connecting the piped stormwater network already installed in upper and lower Ballarat Street, within the Stanley Street (SH6A) intersection.

Because this work is within the state highway, we won't start until the Arterial Road is open to traffic, to minimise disruption as much as possible.



*We'll share more detail on the final piece of our stormwater upgrade work later in 2024.*

You can read more about the Town Centre Arterial project, including FAQs at [www.qldc.govt.nz/town-centre-arterial-road](http://www.qldc.govt.nz/town-centre-arterial-road)

---

The Kā Huanui a Tāhuna team thank you for your patience. We are listening to your feedback and working hard to minimise disruption.



Please contact us should you have any queries or concerns:



**[Click here to subscribe](#)**

