



**Kā Huanui
a Tāhuna**

Huanui pānui

(paths and roadways newsletter)

Kā Huanui a Tāhuna is an alliance partnership between NZ Transport Agency Waka Kotahi (NZTA) and Queenstown Lakes District Council (QLDC) along with four design and construction companies, Beca, WSP, Downer and Fulton Hogan.

27 September 2024

Kia ora koutou

Spring has arrived and brought with it a mixed bag of weather, with consequences for work across our projects. We're still on track to achieve some milestones on the utility upgrades for the Frankton Intersection and Bus Hub Improvements and good news for users of the sports grounds and golf course.

Another big highlight in Tāhuna Queenstown is the completion of our underground works for the new Arterial Road. This means we can begin laying the new road surface along Frankton Road. More detail on that further on, along with some progress photos (a taster below) and the latest fly-through video.



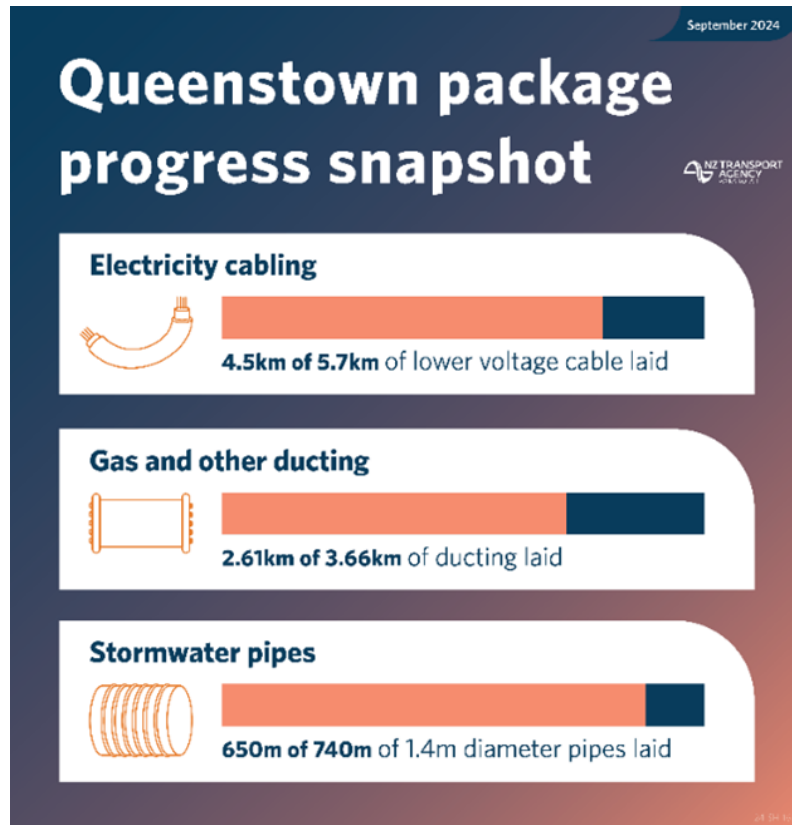
Kerbing has now been poured on either side of the new Arterial Road link between Melbourne and Henry Street. The team is getting ready to lay the new road surface in the coming months.

Thanks for reading,

Kā Huanui a Tāhuna team

SH6/6A Frankton Intersection and Bus Hub Improvements Project

Milestones approaching on Frankton utility upgrades



September underground utilities progress snapshot.

This week we've finished trenching around Frankton Golf Centre for the major new Aurora power cable and are getting ready to cross the highway. By the end of next week, we'll have completed undergrounding the entire cable, which stretches for more than 5.5km from the Aurora electricity substation on SH6 Ladies Mile to the intersection of Ross and McBride Street.



Overnight highway closures were necessary for our utilities trenching across SH6 Kawarau Road.

Then, by mid-October, we'll have finished excavating and laying the 740m-long, 1.4m-diameter stormwater line adjacent to SH6 Ladies Mile and Kawarau Road. We'll be restoring the grounds with new grass at the sports fields, events centre and golf course once the trenching is finished.

The stormwater line connects to the existing QLDC main at the airport boundary, and then the stormwater runs down to the Lucas Place roundabout, crosses over McBride Street, then is filtered to capture pollutants (such as heavy metals, petroleum and hydrocarbon-based contaminants). Once treated, the stormwater is released into Lake Whakatipu.

Long term, these upgrades not only bolster our region's current infrastructure but pave the way for future development and a quickly expanding community. As Queenstown Mayor Glyn Lewers said recently, "...the net result of this work is large sections of Queenstown primed for supporting future growth and strengthening key institutions like Queenstown Events Centre and Queenstown Airport."

Check out the latest Frankton Intersection and Bus Hub Improvements construction fly through below:

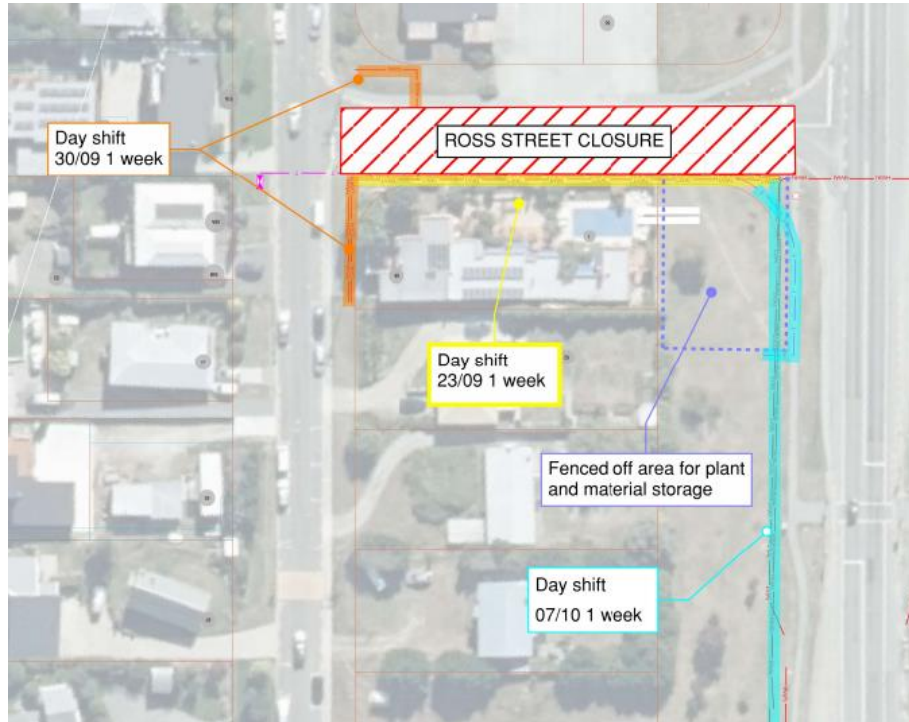


Update on closure of Ross Street

Last month we let you know about work happening on Ross and McBride Streets, laying electrical and fibre optic cable. We were able to carry out the nighttime trenching across both these streets, but there were delays with getting into the shoulder at the Ross-McBride intersection.

This was due to the rain and snow earlier in September which caused boggy ground at the Queenstown Events Centre and Frankton Golf Centre, which in turn meant we were unable to use large machines to excavate across their grounds and link up with the Ross Street trench.

Ross Street will remain closed to traffic until Friday 4 October as we continue trenching along the street but will be open this weekend, 28-29 September.



People will still be able to access St Margaret's Presbyterian Church from SH6 Kawarau Road.

Plan around Frankton Village intersection closure

From Monday 7 October we'll begin excavating at the intersection of Gray and McBride Streets to upgrade the stormwater connections that lie beneath the road. These connections link the underground pipes that transport stormwater away from built up areas for treatment and release into Lake Whakatipu. This work will take about four weeks.



Stormwater flows won't be affected while we upgrade the connections beneath the intersection.

Although the intersection of McBride and Gray Streets will be closed, people will be able to get to the Frankton Shops on Gray Street from the SH6 Kawarau Road end, and the driveway will be open for deliveries. The Gray Street public carpark is also accessible.

Customers wanting to visit Harbour Fish, Touchdown Car Rentals, Life's a Grind Espresso Caravan, RAD Car Rental, and the Frankton Village underground carpark will be able to get to these businesses via the SH6A Frankton Road end of McBride Street. Access will be managed by traffic staff.

Early work at Howard's Drive



The team are undertaking advanced works in the Howard's Drive area at a time that best suits the Pet Lodge operators.

Upcoming Night works

Our next set of night works on SH6 Ladies Mile Highway is being planned for late October. We're working with different groups who use the road, such as freight and bus operators, together with the various utilities companies involved.

We'll share more details in next month's newsletter.

For more information

Full details about the SH6/6A Frankton Intersection and Bus Hub Improvements project can be found at our website, [Queenstown package | NZ Transport Agency Waka Kotahi \(nzta.govt.nz\)](#).

Contact the project team by emailing info@wtpa.co.nz or by phoning [0800 482 684](tel:0800482684).

To receive Work Notices for this project, please email info@wtpa.co.nz with 'Work Notice' in the subject line.

What's the Latest: Town Centre Arterial (Stage 1)

Spring has arrived, and with it, the start of asphalt season for our crews. It's a big step to have begun rolling out asphalt from one end of the Arterial route to the other, starting with the footpath on the lakefront side of Frankton Road and continuing towards the southern side of Melbourne Street.

Check out the latest flythrough video below to see the progression for yourself:



Our focuses in October

Over the month ahead there'll be plenty happening on, and around, the new Arterial Road.

We're about to install the new flush pedestrian crossing and pavers on lower Suburb Street and expect to be able to open this road by the end of October. Flush crossings are installed at intersections without traffic signals and are designed to slow down vehicles and make the area safer for everyone using the road.

In early October we'll also begin work on upper Suburb Street. Once this is complete, we'll then move across to Dublin Street.



The above diagram shows the layout of Frankton Road over the next few months.

We've made significant progress at the intersection of Sydney and Melbourne Streets. If you haven't already seen, the garden beds and new footpaths are now complete. With our prep work all done, from Monday 7 October we'll start constructing the lower half of the road (towards Stanley Street). This will involve removing the old surface, excavating and levelling the ground to sub-grade, and then compacting the road and applying asphalt.

Business and resident access towards St Joseph's Church and Frankton Road will be via Hallenstein Street only - there will be no vehicle access via Stanley Street.

This work will take about four weeks. For more information, click [here](#).



(Left) We will soon begin work on the lower side of the Sydney-Melbourne intersection, due for completion by the end of October, and (right) completed footpath on lower Sydney Street.

Across Melbourne, Beetham, Henry, Malaghan and Ballarat Streets there'll be a range of activity underway this month - from preparing sections of road and footpath for asphalt to installation of street light ducting and poles, street furniture, and landscaping. All these elements will come together at completion to make these streets safe, accessible, well-lit and attractive for residents and visitors alike.



A bird's eye view of the Malaghan Street wall (under construction far left) and the expansive, and expressive, Ballarat Street wall.

The new schist stone base on the Melbourne-Beetham Street retaining wall is looking fantastic too. What could have been a purely functional structure now also showcases cultural, historical and natural elements, sharing and continuing the story of Tāhuna Queenstown on many levels.



Schist is the basement rock of Central Otago. It was a valuable resource for Māori, used in a variety of ways, and today is often used as an eye-catching construction material.

With the increase in people moving around the town centre during the school holidays, plan your route to avoid work sites where possible.

Lower Ballarat Street Stormwater upgrade

Last month we let you know about planned work to enhance the resilience of our stormwater network on lower Ballarat Street by upgrading approximately 90m of stormwater pipes between the Village Green and Stanley Street. The upgraded pipe will be 900mm in diameter, which is close to double the size of the existing pipe.

We're working through some minor tweaks before this work begins and continuing to communicate with affected parties. We plan to share a wider update on these works late next week.

Phase 1: mid-October until December 2024

We'll relocate existing power ducting underground between Brazz Bar and Athol Street. Then, we'll install a new stormwater pipe on lower Ballarat Street. Once the stormwater pipe is installed, we'll place a precast headwall beside Horn Creek, providing additional support and protection for the newly installed stormwater pipe.

Phase 2: mid-February 2025 for approximately eight weeks

We'll connect the newly upsized stormwater pipe along lower Ballarat Street, through the intersection of Stanley Street, and connect to upper Ballarat Street.

Opening of the Arterial Road (stage 1)

The confirmed opening date for the Arterial Road (stage 1) is 28 January 2025. This factors in some wriggle room in case of challenges outside of our control, such as poor weather affecting our ability to complete final asphaltting of the road, or supply delays.

While this date is a little later than expected, it does mean the road can open with the traffic signals tested and operating as intended, removing the need for traffic management or temporary signage. Opening sooner would require significant traffic management, potentially adding additional cost to the project.

On 19 September, local Councillors agreed on a name for the new section of road linking Melbourne Street to Henry Street. Once open, this part of the road will be called Henry Street.

We're looking forward to opening the road and celebrating this milestone with the community. Keep your eyes peeled for information about an official opening event.

You can read more about the Town Centre Arterial project, including FAQs at www.qldc.govt.nz/town-centre-arterial-road

The Kā Huanui a Tāhuna team thank you for your patience. We are listening to your feedback and working hard to minimise disruption.

Please contact us should you have any queries or concerns:



[Click here to subscribe](#)

