



**Kā Huanui  
a Tāhuna**

## **Huanui pānui**

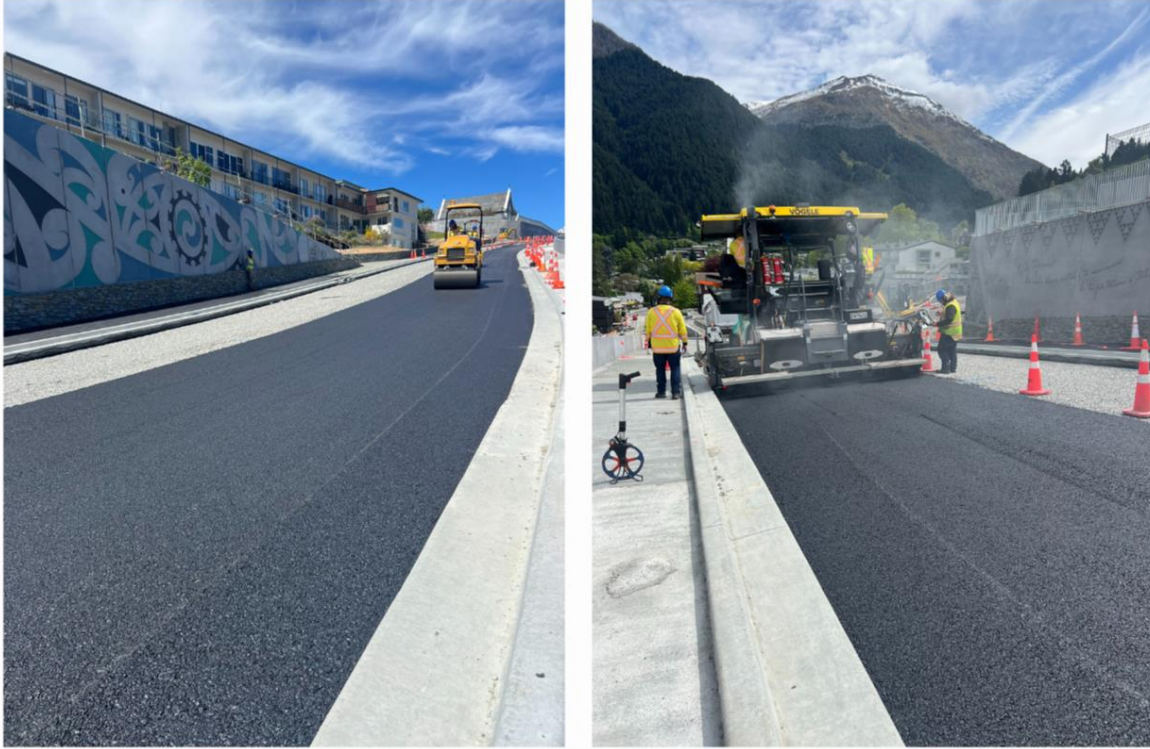
(paths and roadways newsletter)

*Kā Huanui a Tāhuna is an alliance partnership between NZ Transport Agency Waka Kotahi (NZTA) and Queenstown Lakes District Council (QLDC) along with four design and construction companies, Beca, WSP, Downer and Fulton Hogan.*

**28 November 2024**

Kia ora koutou

The asphalt paving machines (and their operators!) have been hard at work in Tāhuna Queenstown this month. The newly constructed link between Melbourne and Henry Street is looking sharp with the first layer of asphalt down. We're also stoked to reopen a number of local roads as our Arterial Road 'to do list' gets shorter, in preparation for both the Christmas construction shutdown and the official opening at the end of January.



*Rollin' rollin' rollin'.... asphalt hits the new section of the Arterial Road.*

At Frankton, we've achieved a lot during our nightworks on SH6 Frankton Highway including trenching, laying, testing and activating the new drinking water pipeline, and have finished a week ahead of schedule. In this edition we also share how we're helping people get between key medical services and other businesses at Frankton Village, our stall at the Remarkables Market, and other updates.

Thanks for reading,

Kā Huanui a Tāhuna team

---

# What's the Latest: Town Centre Arterial (Stage 1)

## Key steps and a VIP visit

It's been a big month of progress, especially getting the first layer of asphalt down on the newly built section of road linking Melbourne and Henry Streets! Check out the map below showing what asphaltting has been completed and what's still to go. We'll keep this updated so you can keep track.



And here's some drone footage showing the team at work and recent progress:



We were also pleased to host the Hon Mark Patterson, Associate Minister for Regional Development, and QLDC Mayor Glyn Lewers on a walkover of the Town Centre Arterial project earlier this month.

It was a great opportunity to provide an up-close look at the significant structural elements required to build the new Henry Street, appreciate the cultural storytelling on the retaining walls and talk about the long-term vision to deliver the full Arterial route around Queenstown Town Centre.



*Hon Mark Patterson (rear right) hears about the benefits for Queenstown from the new Arterial Road from QLDC Mayor Glyn Lewers (rear left) during a recent visit.*

---

## **Progress paves the way forward**

It's also been a month of achievements on the side roads connecting to the new Arterial route. We've finished building the new road on the lower half of the Sydney-Melbourne Street intersection and it has now reopened, making it much easier to drive through this area.

We're also pleased to have re-opened both upper and lower Suburb Streets after installing pavers, flush crossings, line marking and finishing touches, helping people on foot or bicycle to cross these roads safely.

It's great to see all these pieces of work coming together, enabling us to gradually lessen our presence in the Town Centre and reduce the disruption for businesses and residents located here.



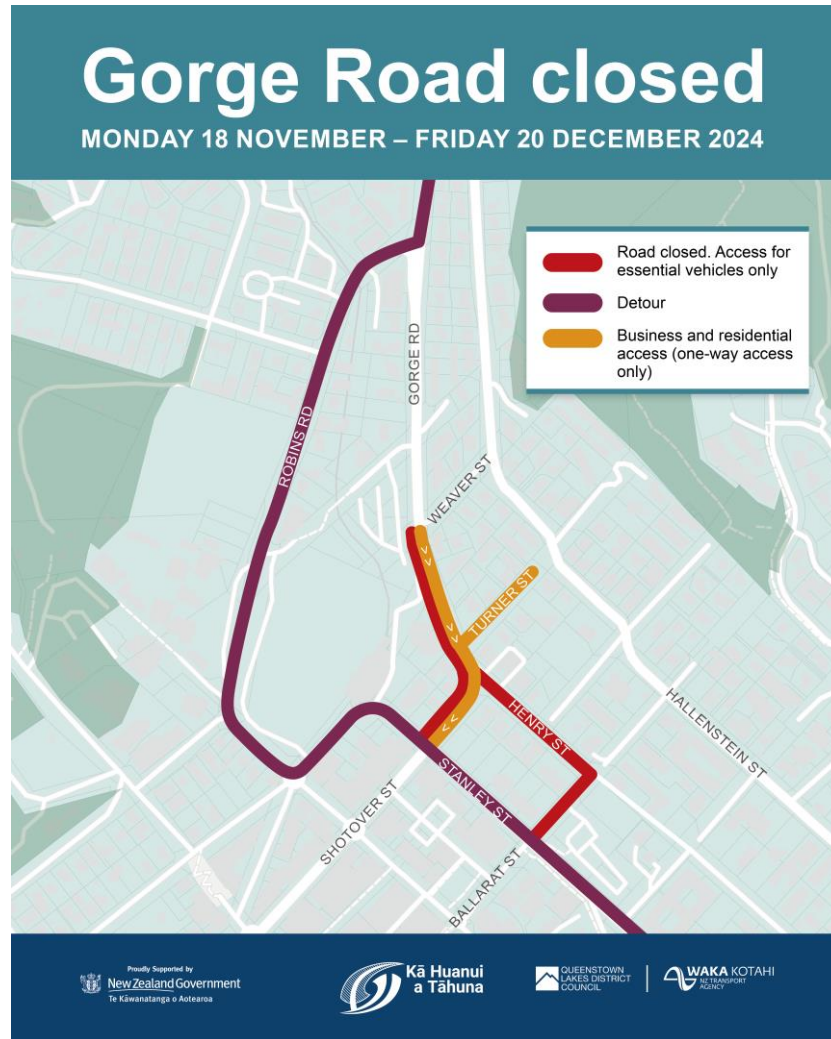
*Ready for traffic...the intersection of Sydney and Melbourne Streets.*

---

### **Remaining access changes in 2024**

While we're getting really close to the finishing line, there's still lots to do. Part of Gorge Road and Turner and Henry Streets remains closed until 20 December while we install median islands, raise manholes, and prepare for the final layer of asphalt. We'll also install a flush crossing at the bottom of Turner Street.

Our work to install a flush crossing on Dublin Street is going well and we expect to be finished here before Christmas. On Henry Street, we are making progress on preparing the pavements, kerbs, and road. Businesses on Henry Street remain accessible via Gorge Road, but please take extra care due to the heavy trucks moving around this area.



*Map of road closures and detours in the Town Centre.*

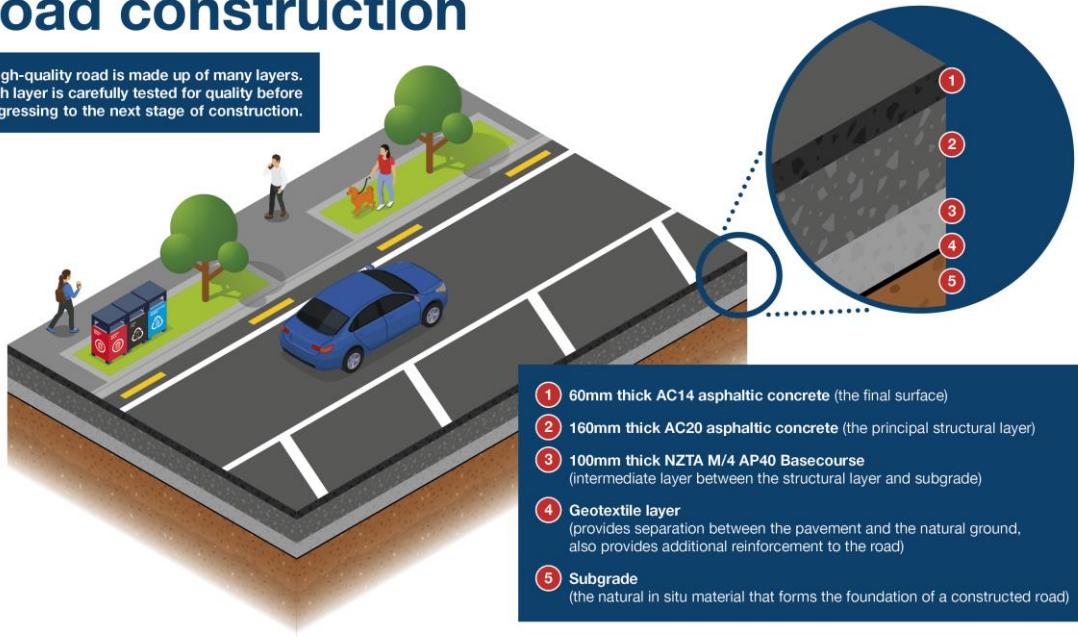
---

## Building a road - a story of layers

Have you ever wondered what goes into building a road? It's a precise combination of materials in layers to provide strength and durability, each tested before the next is applied:

# Road construction

A high-quality road is made up of many layers. Each layer is carefully tested for quality before progressing to the next stage of construction.



*Most of us use them everyday, but there's a lot more to a road than what you see on the surface.*

You can read more about the Town Centre Arterial project, including FAQs at [www.qldc.govt.nz/town-centre-arterial-road](http://www.qldc.govt.nz/town-centre-arterial-road)



## SH6/6A Frankton Intersection and Bus Hub Improvements

There's movement on lots of fronts at Frankton as we prepare for the last few weeks of work for the year, and ramping up in 2025.

We've started on the new entrance and driveway for the Frankton Golf Centre, and this will be completed in January. The new carparking area is anticipated to open by May 2025. Golfers will enjoy having a sealed and landscaped entrance to the facility, that will in time include traffic signals to make the entry safer.

With the Gray-McBride Street intersection reopened, we will pause work here until after 13 January, when we'll start rebuilding the upper and lower parts of Gray Street. We will also reinstate the road markings that were removed from the intersection due to trenching, including returning the mobility car park near Awanui Labs on Gray Street. Parking in the Gray Street Carpark will remain as P10 Hours on one side of the carpark and P30 Minutes on the other.

---

### SH6 Frankton closure for night work pays off

Our night work on SH6 Frankton Highway finished ahead of schedule and we made the most of the time on the highway without traffic.

First, we excavated a power cable trench across the highway, completing the job in just one night thanks to the fine weather conditions. We also felled and mulched some trees near Hansen Road in preparation for later construction in this area.



*Precise trenching across the state highway, helped by no rain or wind.*

We then moved on to installing the new 400mm-diameter drinking water pipeline. After laying and connecting the new water line, the water team chlorinated the line to begin the disinfection process. The water was tested and tested again after 24 hours. The line was then flushed, and after another 24 hours a final reading was taken to confirm that it was ready to supply water to people.



*Part of the new water supply system for Frankton, built as part of the Queenstown Upgrade.*

We used the rest of our night work for smaller pieces of utilities work and prepared for the placement of future light poles and traffic signals with power and Chorus ducting. The Frankton Cemetery heritage wall has been monitored throughout this work with no issues being raised.



*Left, the new drinking water pipeline connected in place, and right, the team temporarily relocates a light pole in order to excavate a foundation for its permanent position.*

---

## **Green means go at Frankton Village**

Have you noticed the new green footprints on the footpaths at Frankton Village?

These came about following feedback that some people, such as elderly patients and people visiting the area, were finding it difficult to navigate from The Doctors Whakatipu through the road works to Awanui Labs collection centre and then on to Unichem Summerfields Pharmacy.

The bright footprints and signage will help guide people around this 'medical triangle' and can be moved around as our work sites change. They also help customers get to other businesses in this area by clearly indicating where footpaths are open for use.



*'Follow the footprints' to get to important medical services while road works are underway.*

---

## High interest at Remarkables Market

It was a beautiful day at the Remarkables Market earlier this month when Kā Huanui a Tāhuna team members held an information stall and chatted with mainly locals about the Queenstown Package.

There was a high level of awareness about the project's objectives, with many people asking how it could be completed faster. Others enquired about the location of cycleways, access to Frankton Cemetery, and the completion date for the new Queenstown Town Centre Arterial Road.



*Left, displayed information about what's ahead for the Frankton Intersection and Bus Hub Improvements, and right, our Arterial Stage 1 – Civil Manager Awab Yaghi speaking to market visitors about Alliance projects.*

We're planning for our next stall in early 2025, look forward to seeing you there!

---

### **For more information**

Full details about the SH6/6A Frankton Intersection and Bus Hub Improvements project can be found at our website, [Queenstown package | NZ Transport Agency Waka Kotahi \(nzta.govt.nz\)](#).

Contact the project team by emailing [info@wtpa.co.nz](mailto:info@wtpa.co.nz) or by phoning [0800 482 684](tel:0800482684).

To receive Work Notices for this project, please email [info@wtpa.co.nz](mailto:info@wtpa.co.nz) with 'Work Notice' in the subject line.

---

The Kā Huanui a Tāhuna team thank you for your patience. We are listening to your feedback and working hard to minimise disruption.

Please contact us should you have any queries or concerns:



**Click here to subscribe**

---