

[View this email in your browser](#)



## Huanui pānui

(paths and roadways newsletter)

*Kā Huanui a Tāhuna is an alliance partnership between NZ Transport Agency Waka Kotahi (NZTA) and Queenstown Lakes District Council (QLDC) along with four design and construction companies, Beca, WSP, Downer and Fulton Hogan.*

**26 June 2024**

Kia ora koutou,

There's been action on many fronts this month, as we progress our underground services work at Frankton Road for the Town Centre Arterial. Check out this neat flythrough video which shows you how things are developing along Henry and Melbourne Streets toward Frankton Road:



Meanwhile at Frankton, trenching and installation is continuing for the new stormwater pipeline and upgraded power cable that are boosting resilience for this area on many fronts. Read on for how you can continue to access the Queenstown Events Centre, sports fields and Frankton Golf Centre grounds while work is underway in this area.

And with the long weekend almost here, we'd like to wish Mānawatia a Matariki — Happy Māori New Year to all our Pānui readers. While many of you will be working at this busy time, we hope you're also able to catch up with friends and whānau, share kai and reflect, and enjoy local events including [Matariki at Te Atamira](#) and [Matariki Arrowtown Kā-Muriwai](#).

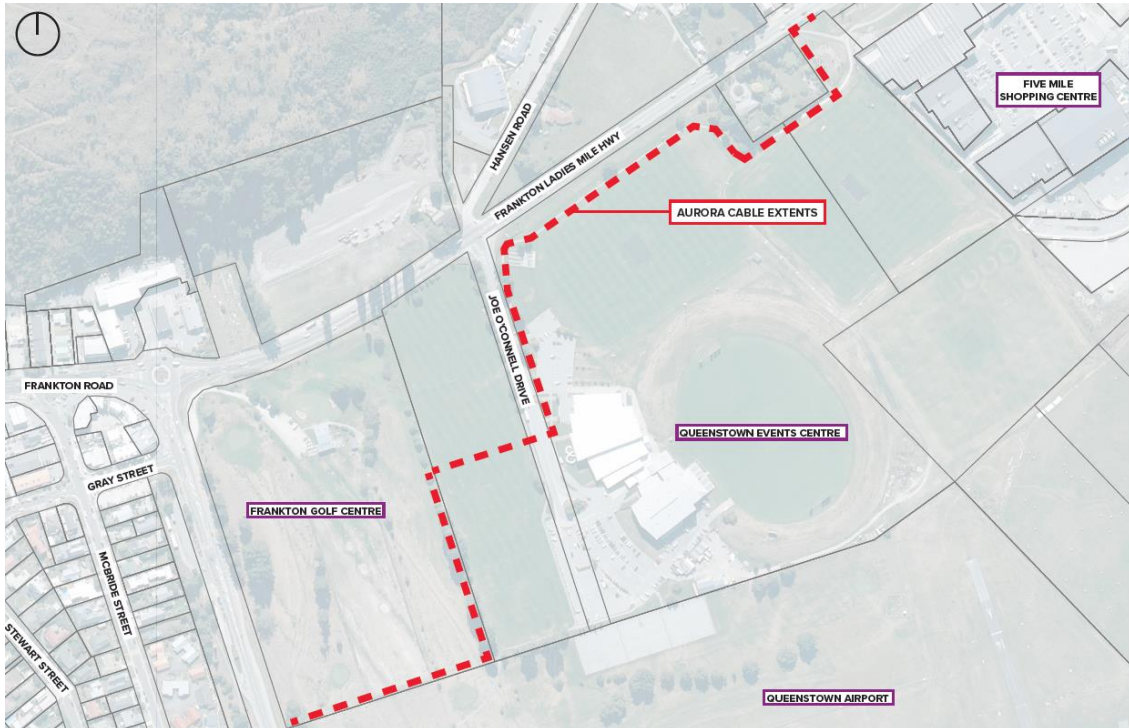
Kā Huanui a Tāhuna team

---

## SH6/6A Frankton Intersection and Bus Hub Improvements Project

## Aurora power cable trenching progresses onto QEC grounds

The upgrade to the main underground power supply at Frankton continues, with trenching work moving on to the Queenstown Events Centre (QEC) grounds earlier this week.

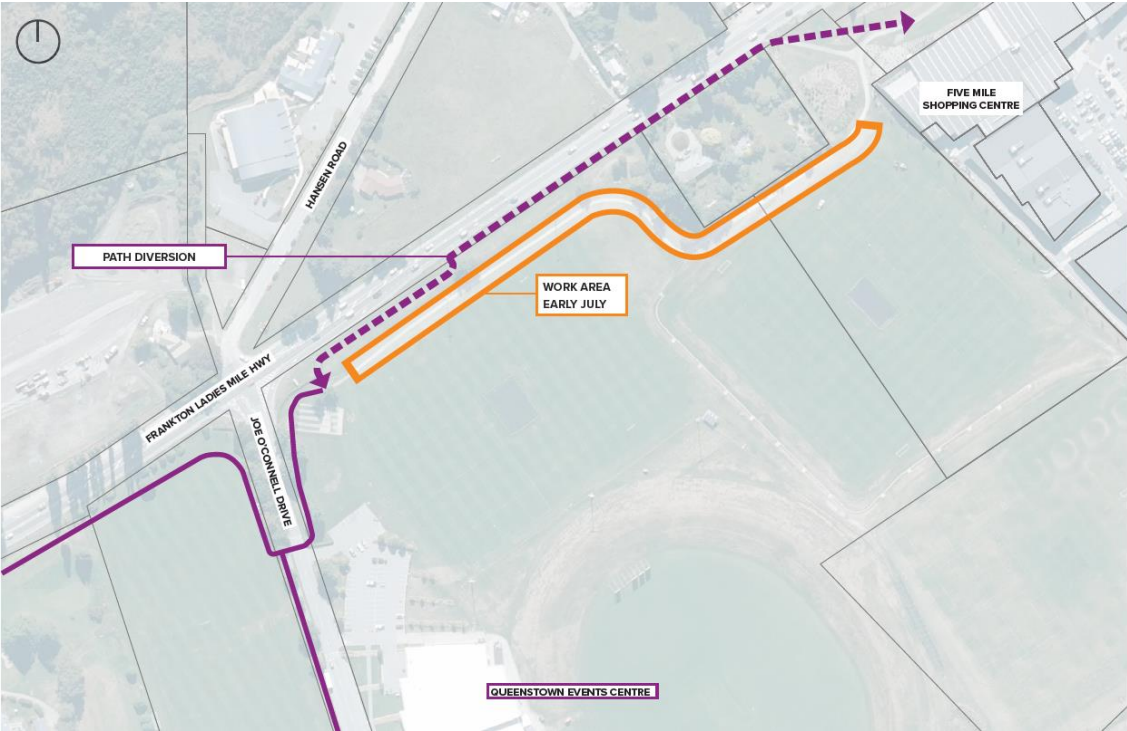


*Access to the sports fields, Queenstown Events Centre and Frankton Golf Centre remains as we work along the dotted line to install the Aurora Energy cable.*

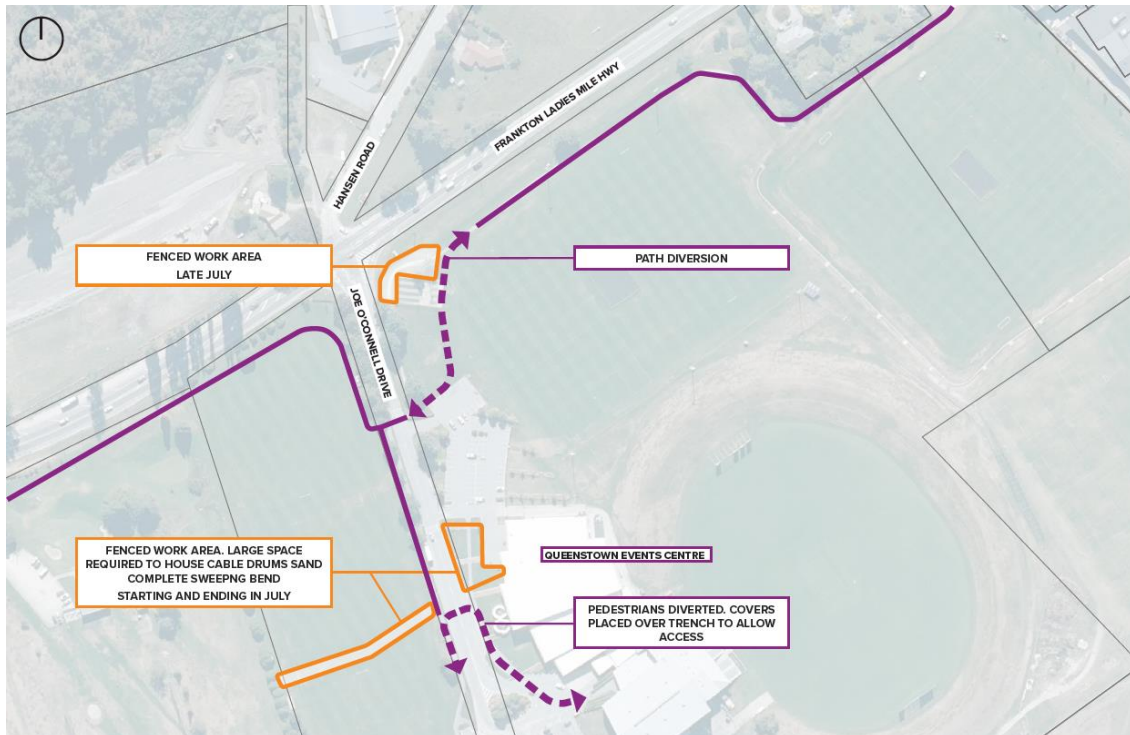
The Events Centre and sports fields will remain open and accessible by car, bike and foot throughout the power cable work. There will be almost no changes to access for people in cars, except for a small section of carparking along the field-side of SH6 Ladies Mile that will be unavailable for about two weeks. People will still be able to use the on-site parking at the Events Centre throughout works.

There will be a short path diversion for people on foot or bikes, as shown in the two maps below, with fencing and plastic pathways where needed around the

work zone. The path diversion route may change a little as work progresses, but there will be plenty of signage to help you get where you're going.



*The map above shows how people will be able to get to QEC and Five Mile during the first part of our work, with diversions for the next part shown in the map below.*



For more information about access to the Events Centre and golf course during works, check out the Your Questions Answered section at the end of this newsletter.

---

### **Keep calm and caddy on at the Frankton Golf Centre**

As of this Saturday, 29 June, the entrance to Frankton Golf Centre will change. To help improve the flow of traffic leaving the roundabout, the driveway is being moved about 200 metres further down SH6 Kawarau Road, towards the airport.

This will become the Centre's permanent new entrance and will make it safer and easier for people entering and exiting the golf course.

The Golf Centre will remain open during the changeover and the new access will become operational early Saturday morning, well ahead of the first tee times.



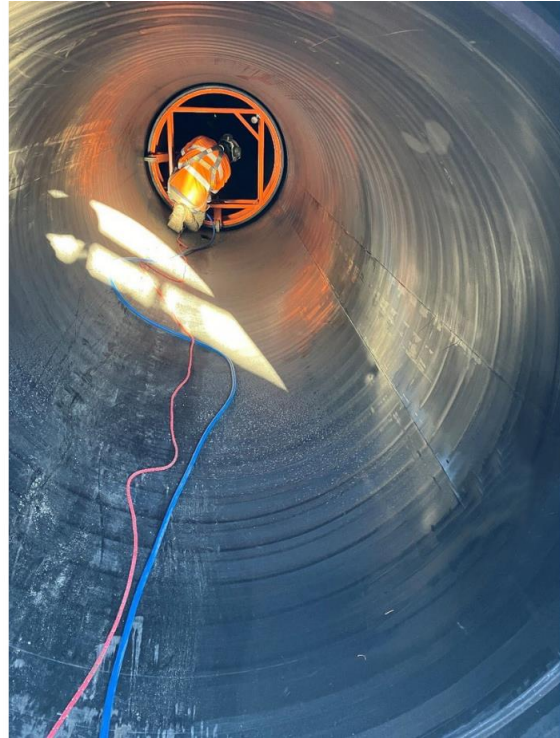
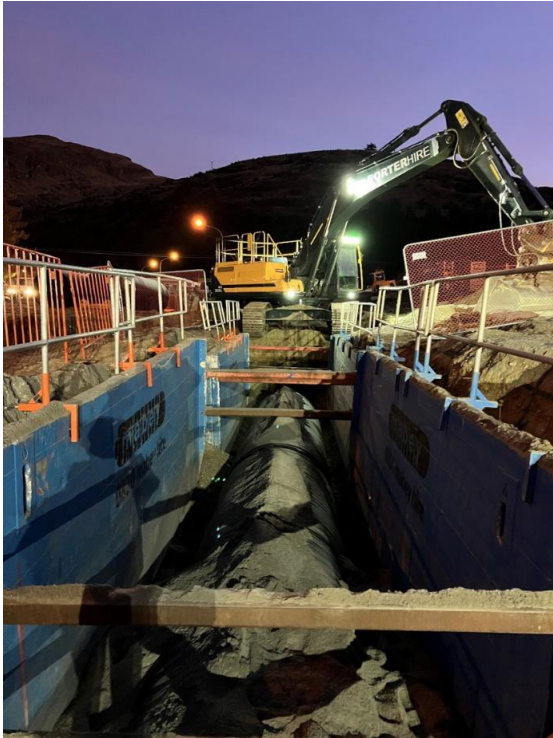
*The golf course entry is moving but signs will help golfers find their way to the Centre.*

---

### **Stormwater pipeline progresses**

We're continuing our work adjacent to SH6 Kawarau Road laying the major new stormwater pipeline (in fact you can see some of the remaining sections of pipe in the photo above).

Since we began, our crews have laid 230 metres of stormwater pipe, with 520 metres still to go. We're expecting to complete this work in September.



*In the trenches – work continues to boost the capacity of our stormwater network.*

Tidying up a worksite after excavations is always a challenge and even more so in winter! Fortunately, we've been able to use mulch from the trees we felled in April to cover the completed sections of the large stormwater trench.

This not only looks better, but it helps to keep the soil and moisture stable over winter. This is important because otherwise, dry soil can turn into dust and this could cause issues for Queenstown Airport operations nearby.



*Neat, tidy and protected... the newly-covered trench along SH6 Kawarau Road.*

---

### **Planning well underway for Gray-McBride works**

Looking ahead, we're preparing to start work to move important services out from underneath the State Highway 6/6A Frankton intersection and into Gray Street and McBride Street. By doing this at the same time as our other service relocations, it means we won't have to come back again and cause further disruption.

As well as strengthening the underground infrastructure around Frankton Village, we'll round out the project by installing traffic signals at the Gray-McBride intersection to better manage traffic flows and make it safer for people crossing the road.



The work is expected to take approximately 12 months to complete. We'll take a staged approach, working closely with residents and businesses throughout to understand and support their access needs.

We expect work to begin in the next six weeks and will update you closer to the time.

---

### **Getting your daily grind during upcoming Gray-McBride work**

Work on the Gray-McBride intersection will start on the corner nearest the well-known and loved coffee cart, Life's A Grind Espresso. But if you're worried about losing access to your morning caffeine fix, never fear!

As part of our planning with businesses in this area, we've been working with coffee cart owner Anna Shorey to make sure that her operation is not adversely affected by construction. We're pleased to report that Anna and her cart will be moving just 15 metres from her usual spot, onto the forecourt of [Touchdown Car Rentals](#).

"Don't worry, we're still here! We'll be serving up coffees and our usual variety of yummy baking – come rain, snow or road works," says Anna. "We will likely stay in this new spot for the duration of the project, but if you can't see us, we won't have gone far – just check our [Facebook page](#) for updates."



*Life's A Grind Espresso will be moving just 15 metres away, to the forecourt of Touchdown Car Rentals.*

---

### **Felled trees to further benefit the community**

While it was a big decision to remove a number of trees at the Frankton Golf Centre, they have been the gift that keeps on giving.

In addition to the mulch being used at a local park and for reforestation efforts, our contractor [Tree Care Southern Lakes](#) has recently delivered seven truck-loads of logs to the [Queenstown Lions Club](#). The logs are now being ringed, split and stored by Lions members ready for next winter, when it can be sold as firewood to give a boost to many well-deserving community initiatives.



*Lions Club members hard at work turning the donated logs into next winter's firewood.*

Tas Dawson, a member of the Lions Club for “30-odd-years”, explains that donations like this are great fundraising opportunities for the community – either for the Lions to sell directly for their community initiatives, or as a donation to other local organisations. In the past they’ve donated to local schools, Scouts clubs, or social agencies like [Happiness House](#) to fundraise with.

“We stick to our [Lions] motto – ‘we serve’. And we serve the local community well- everything we do feeds back into the community, across a broad range of sectors,” says Tas.

---

**For more information**

Full details about the SH6/6A Frankton Intersection and Bus Hub Improvements project can be found at our website, [Queenstown package | NZ Transport Agency Waka Kotahi \(nzta.govt.nz\)](#).

Contact the project team by emailing [info@wtpa.co.nz](mailto:info@wtpa.co.nz) or by phoning [0800 482 684](tel:0800482684).

If you'd like to receive upcoming Work Notices for this project, please email [info@wtpa.co.nz](mailto:info@wtpa.co.nz) with 'Work Notice' in the subject line.

---

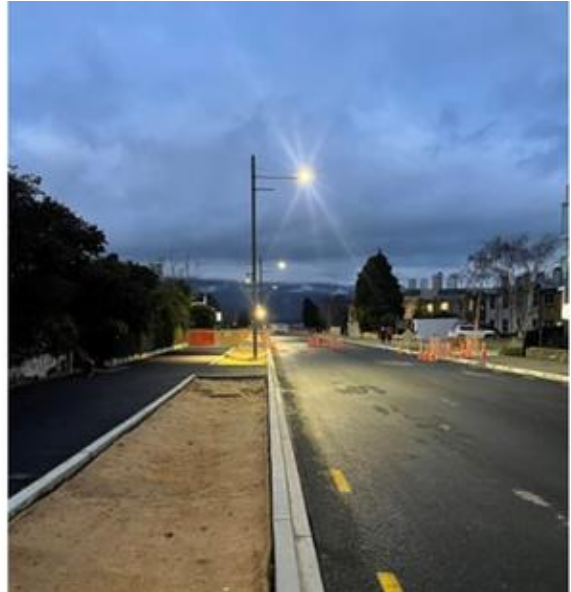
## What's the Latest: Town Centre Arterial (Stage 1)

### Mid-year update on Arterial road

We're nearing another milestone on the Town Centre Arterial Road, with our work to upgrade water and utilities pipelines on the lakefront side of Frankton Road heading towards its final stages.

We've also made great progress this month completing footpaths on the northern side of Melbourne Street, and beginning kerb preparation at the intersection of Frankton Road and lower Suburb Street.

You may also notice new street furniture starting to appear on Melbourne Street, and our newly installed light poles have now been switched on to brighten these early winter evenings.



*Melbourne Street is being furnished with new seats, street lighting and garden beds ready for planting in spring.*

### Did you know?

As our underground works on Frankton Road are progressing, many of the utilities and water pipes we have replaced have actually been upsized! This means Queenstown now has more resilient infrastructure that can accommodate our growing population.

---

### Changing it up on Sydney

Our crews are working towards being able to open the upper half of the Sydney/Melbourne Street intersection (towards Hallenstein Street). We've done most of what we need to, but there's still a few things on our list, like adding the temporary line marking.

Once this is done and we can open this section of the road, we'll start working on the lower half of the intersection (towards Stanley Street). This means that people will need to travel via Hallenstein Street to get to Melbourne Street.

We'll work on the lower half of the intersection in July and get it to a point where it can be used by traffic, so the entire intersection can open. Then, once the weather is warmer in spring, we'll return to finish this area with asphalt and the final road surface.

---

## What's ahead?

Here's a summary of our work coming up over the remainder of 2024, and next year:

- **Lower Ballarat Street stormwater works** – we're boosting the resilience of the overall stormwater network by laying 90 metres of upgraded stormwater pipes. This will help Queenstown to prepare for increases in future uphill catchment areas, and for more intense rainfall events, such as due to climate change. We'll build a small headwall by the bridge at Horne Creek to support and protect the stormwater pipe. The timing of this work will be confirmed and communicated soon.
- **Flush crossings for Dublin, Suburb and Turner Street** - at the entry/exit points to these streets.
- **Gorge Road island installation** – this is part of the new intersection configuration which includes new traffic signals, and a safe area to wait to cross the road.
- **New traffic signals** - will be installed at the intersections of Gorge Road/Henry Street, Sydney Street/Melbourne Street, and Melbourne Street/Frankton Road.
- **Above ground works** - including the installation of street furniture, planting, line-marking and signage.

- **Surface sealing** - along the Arterial corridor, the final step before line-marking.

#### Next year - 2025

- **Stanley Street intersection stormwater connection from lower Ballarat Stand upper Ballarat St** - this is the final piece of the stormwater infrastructure puzzle and will be installed after the Arterial route is opened to minimise disruption. The piped network has been specifically designed to capture as much of the water flow as possible, to reduce the amount of stormwater that will flow across the Arterial Road during rainfall events. It will also improve water quality by treating the initial stormwater runoff (which has a higher concentration of pollutants) before discharging it into Horne Creek and/or Lake Whakatipu.
- **Remaining above ground works on side roads** – once traffic is flowing on the Arterial Road, we'll be completing work on the side roads. This includes a turning circle on Malaghan Street, final landscaping (which must be done before late summer so we're not planting in dry weather), and decommissioning the Arterial yard for our machinery and supplies.

You can read more about the Town Centre Arterial project, including FAQs at <http://www.qldc.govt.nz/town-centre-arterial-road>

---

### Your questions answered

We appreciate your comments and feedback. If you have anything you would like to know, please email [info@wtpa.co.nz](mailto:info@wtpa.co.nz). We'll continue to answer your questions in future newsletters.

This month's Q&As are about our work laying the Aurora Energy power cable through the grounds of the Queenstown Events Centre, and how this will affect

people walking, biking and driving to the events centre and sports fields while work is underway.

**Will I still be able to park along the State Highway above Field 3 to get to my child's sports events?**

There will be about two weeks from Sunday, 21 July when this area will be sectioned off for trenching work and will not be available for parking.

**Will carparking at Queenstown Events Centre be affected during work?**

Although some carparks at the Events Centre were unavailable while we were setting up on site, all carparks are now available and no further impact on Queenstown Events Centre parking is expected.

**How will this work with Mardi Gras over the long weekend?**

There is often a squeeze on carparking over long weekends, with high visitor numbers, as well as people wanting to access the Events Centre on Saturday 29 June for the [Mardi Gras Queenstown Music Festival](#). We are encouraging people to use alternate modes of transport including carpooling or public transport wherever possible, check out local bus information [here](#) – the Bus Hub is only a short walk from QEC.

---

**For more information on the Queenstown Town Centre Street Upgrades program please click here**

**For more information on the Queenstown Town Centre Arterial Stage 1 please click here**

**For more information on the Lakeview Development please click here**



**For more information on the SH6/6A Frankton Intersection and Bus Hub Improvements project please click here**

**For more information on the Wakatipu Active Travel Network please click here**

---

The Kā Huanui a Tāhuna team thank you for your patience. We are listening to your feedback and working hard to minimise disruption.

Please contact us should you have any queries or concerns:



**[Click here to subscribe](#)**



Proudly Supported by  
**New Zealand Government**  
Te Kāwanatanga o Aotearoa



*Copyright (C) 2024 Kā Huanui a Tāhuna. All rights reserved.*

To [unsubscribe](#) please click here