



## Puhoi to Wellsford



Update

Newsletter 06 - April 2012

# The preferred route for Puhoi to Warkworth

## NZTA to progress with consents and designation applications



The new highway from Puhoi to Warkworth will be a safer, more reliable route and improve journey times for freight and motorists.

The NZ Transport Agency now has a preferred route for the extension of the Northern Motorway (SH1) from the Johnstone's Hill tunnels to just north of Warkworth.

Since January last year, detailed work has taken place to refine the indicative route in response to further investigation of engineering and environmental issues. This was combined with feedback received during the two-phase consultation process. The preferred route is similar to the indicative route announced in 2010.

Turn the page for a graphic of the preferred route and key points where it has been refined compared to the indicative route.

Members of the Puhoi to Wellsford project

team have been contacting individual property owners affected by the preferred route. We will ensure everyone has the information they need about the next steps with regard to the property purchase process.

To find out more about the preferred route, the process ahead and the Warkworth to Wellsford section of the RoNS, we are holding public information days on Tuesday 1, Thursday 3 & Saturday 5 May.

If you're unable to attend an information day, a map of the preferred route, displays from the information days, this newsletter and further information will be available on the project website:

[www.nzta.govt.nz/puhoi-wellsford](http://www.nzta.govt.nz/puhoi-wellsford)

### What's inside?

Page 2

Where has the route been refined?

Page 3

Moving forward-where to next?

Page 4

Frequently asked questions

### Public information days:

**Tuesday 1 May, 4pm - 7.30pm**

Old Masonic Hall, Baxter Street, Warkworth

**Thursday 3 May, 4pm - 7.30pm**

Puhoi Sports Club, Puhoi Domain

**Saturday 5 May, 10am - 2pm**

Shoesmith Hall, Shoesmith Street, Warkworth

The project team and property specialists will be on site to answer your questions.

## Project goals

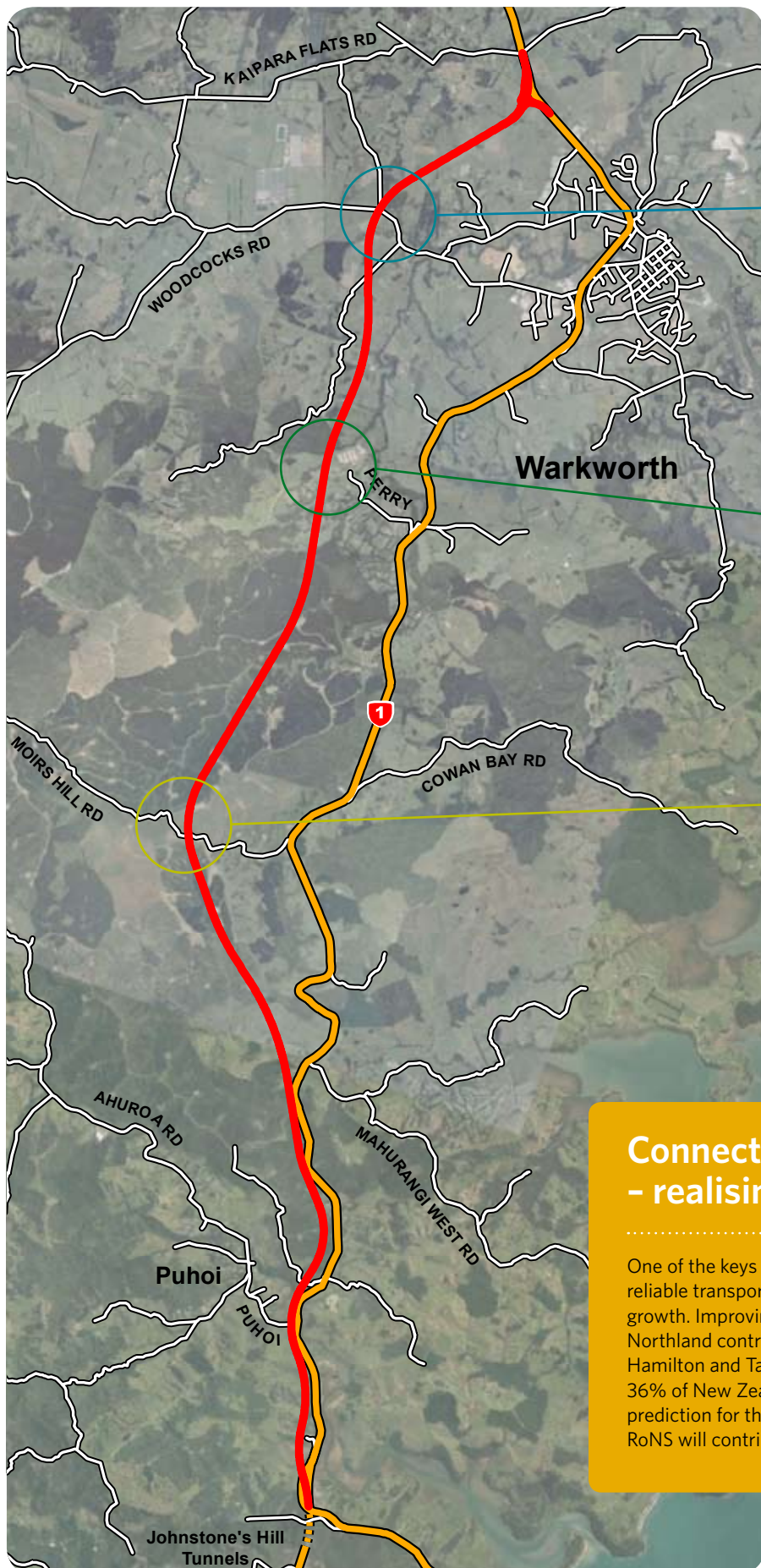
As a road of national significance, the Puhoi to Wellsford project will:

- Enhance inter-regional and national economic growth and productivity
- Improve movement of freight and people between Auckland and Northland
- Improve the connectivity between the medium to long term growth areas in the northern Rodney area
- Improve the reliability of the transport network through a more robust and safer road between Auckland and Northland.

Find out more online:

[www.nzta.govt.nz/puhoi-wellsford](http://www.nzta.govt.nz/puhoi-wellsford)

## Puhoi to Warkworth: Preferred route



### Updated areas on the preferred route

#### Mahurangi River/Carran Road:

We have investigated further the potential construction effects on the Mahurangi River environment and associated engineering issues. The preferred route has moved south-east to cross the river further south of where the indicative route did previously.

#### Perry Road:

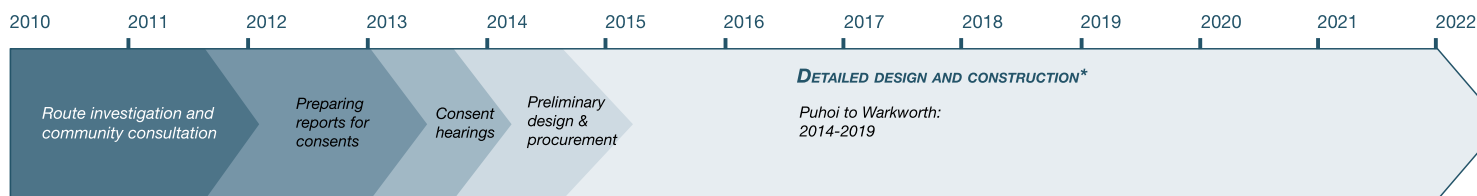
In response to community feedback and further engineering and geotechnical information, the preferred route is located west of the indicative route.

#### Moirs Hill Road:

We have refined the route here following further information about the level of earthworks required to construct the highway. As a result, the preferred route has moved to the west of the indicative route.

### Connecting Auckland to Northland - realising the economic potential

One of the keys to unlocking Northland's potential is to create safe, reliable transport links that support and encourage economic growth. Improving the northern state highway network will help Northland contribute to the so-called 'golden triangle' of Auckland, Hamilton and Tauranga. Together these three centres generate 36% of New Zealand's Gross Domestic Product (GDP) with a prediction for this to rise to 47% by 2026. The Puhoi to Wellsford RoNS will contribute significantly to this.



\* NZTA will seek to accelerate the programme wherever possible.

## Moving forward - where to next?

The public consultation process for Puhoi to Warkworth has now been completed. We thank you for your feedback and local knowledge which has contributed and informed our planning to date and will continue to do so as we move forward.

Now that we have a preferred route, our next step is to protect the 'footprint' or area needed to construct the road by lodging a Notice of Requirement (NOR) and applying for the necessary resource consents.

We have to obtain legal consent for the project - as set out in the 1991 Resource Management Act (RMA) - before any construction can take place. The RMA is the cornerstone piece of legislation that sets out how New Zealand manages development and its actual and potential effects on the human and physical environment.

### 12 - 18 months to develop the necessary planning documents and supporting information

In the next stage of the planning process the project team will focus on detailed investigation of the environmental footprint needed to construct the 18 kilometre route between Puhoi and Warkworth.

It will take the project team significant time and effort to prepare the reports required to support the application for designation and consents. We expect to lodge the application with either the Environmental Protection Agency (EPA) or the Auckland Council in mid to late 2013.

It may be that detailed planning shows the need to further refine parts of the route. Consequently, the footprint may change slightly during this next planning phase. Owners will be kept up to date with any changes affecting their properties.

The main report being produced is an Assessment of Effects on the Environment (AEE). This supports the NOR and resource consents by identifying actual or potential effects (both positive and negative) on the environment, arising from the construction and operation of the new highway. This will include an assessment of the potential effects on flora and fauna, local watercourses and the overall ecological environment, as well as social effects that have been identified in part through public feedback.

An assessment of proposed earthworks, construction methods and structures along the highway are also part of the AEE reports. The project team will also look at staging, financing and procurement options as part of preparing the report.

### Consenting process

The package of documents we lodge for the NOR and resource consents are then considered by either the EPA or Auckland Council. The community (and general public) will have the opportunity to formally make written submissions on the project and this includes the opportunity to present the contents of the submission to the appointed commissioners and/or an Environment Court Judge for their consideration.

### Property purchase

Over the next two to three years, we will continue to work closely with owners affected by the preferred route and, as funding allows,

negotiate property purchases on a case by case basis. Directly affected property owners have now been contacted and informed of the process from this point forward.

### Ready to begin construction

Our goal is to lodge and secure consents by the end of 2014 so that we are ready to begin organising a contractor for construction of the highway. This timeframe is subject to the availability of funding from the National Land Transport Programme to:

- Purchase sufficient property to start construction
- Undertake construction, even if it takes place in stages

## Warkworth to Wellsford

Options to progress the Warkworth to Wellsford section of the RoNS are being considered as part of a wider strategy that identifies a long term programme of improvements for the entire SH1 between Auckland and Northland. A new highway, entirely separate to the current state highway remains our preferred option to improve the reliability and safety of the state highway network between Warkworth and Wellsford for freight, tourism and the motoring public.

At this stage it is too early to release an indicative route for this section of the RoNS project. A target start date for construction has still to be established.

### Right now on SH1

Many of the crashes on the existing state highway involve loss of control, driver fatigue and a generally poor roading environment. A divided motorway with a central median barrier, improved road surfacing and better geometry is expected to reduce crashes by 20-30% (based on forecast traffic volumes in 2051). While planning for Puhoi to Wellsford continues, we're working to improve safety on the existing state highway in the interim.

In the six months to July 2012, we're spending approximately \$1.6M widening shoulders, improving barriers and changing entrances to private properties along the state highway. Key spots include the entrance to the top of the Dome and through the Dome Valley. These improvements will make travel on the existing SH1 safer for all motorists, now and into the future.

Longer term the NZTA will investigate opportunities to address safety issues on the existing SH1 at the Brynderwyns and through Dome Valley.

## Frequently asked questions

### When will you start purchasing property?

We will be working to secure property for construction on a case-by-case basis as funding allows. This may continue up to and beyond 2014 as construction and purchases of property may be staged. However, no decision has yet been made on this.

### Why hasn't access been provided for Puhoi/Mahurangi West drivers?

We are working closely with Auckland Council and Auckland Transport about potential access for Puhoi and Mahurangi West. At this stage access is still under consideration. Both parties will keep the community updated as discussions progress.

### When do you expect to start construction?

Detailed engineering designs are prepared after the designation and consents are approved and a contractor is engaged to build the highway. Construction is the final phase of the project where you will see work in the local area. Subject to funding availability, detailed design for construction is forecast to start in 2014. Opportunities to stage construction of the section between Puhoi and Warkworth will be investigated as part of the preparation of consent documents.

### What is the cost of the project?

The current estimated cost of the Puhoi to Warkworth section is \$760M and the Warkworth to Wellsford section is in the order of \$1.03B.

### Will the Puhoi to Warkworth section be tolled?

Our ongoing investigations include considering all funding options to accelerate the progress of the highway. This includes tolls.

### Why is the Warkworth access to the north of the town centre?

A northern access point best meets the needs of traffic travelling to and from Warkworth and out to the settlements on the coast like Snells Beach, Matakana, Omaha and Leigh. The proposed access provides an easy and direct connection into Warkworth along the existing state highway and keeps motorway traffic away from both Mahurangi College on Woodcocks Road and Warkworth Primary School on Hill Street. The proposals can easily connect to the planned Auckland Council Western Collector project and do not preclude a link to Matakana Road.

### SH1 Hill Street intersection upgrade

Recent upgrades to the state highway through Warkworth town centre have improved safety, capacity and traffic flow between the Woodcocks and Whitaker intersections. In 2013/2014 funding is available to commence work on the Hill Street intersection upgrade which is a joint project between the NZTA and Auckland Transport. The upgrade will help manage the increasing volume of state highway traffic travelling through town and local traffic travelling east-west across town. Together with the planned Western Collector, it provides the local transport infrastructure needed to support Warkworth's planned growth as outlined in the Auckland Plan.



View an animation of the preferred route online at: [www.nzta.govt.nz/puhoi-wellsford](http://www.nzta.govt.nz/puhoi-wellsford).

### Want to know more about the other Roads of National Significance projects?

Visit the RoNS homepage on the NZTA website at: [www.nzta.govt.nz/rons](http://www.nzta.govt.nz/rons) to find out about other significant infrastructure projects that will encourage economic prosperity by improving reliability and trip times for people and freight.

## Our contact details

For general enquiries, or contact information about the NZ Transport Agency please check our website [www.nzta.govt.nz](http://www.nzta.govt.nz) or email us at [info@nzta.govt.nz](mailto:info@nzta.govt.nz)

Contact email: [puhoi-wellsford@nzta.govt.nz](mailto:puhoi-wellsford@nzta.govt.nz)  
Phone: 0800 P2WNZTA (0800 729698)  
[www.nzta.govt.nz/puhoi-wellsford](http://www.nzta.govt.nz/puhoi-wellsford)

Puhoi to Wellsford NZTA Project Manager: Mieszko Iwaskow

