



## Puhoi to Wellsford

Update

Newsletter 04 – November 2010



### Puhoi to Warkworth: your feedback is wanted

Consultation on an indicative route between Puhoi and Warkworth is now underway. Let us know your thoughts before 28 January 2011.

Some of the terrain to be crossed for the new Puhoi to Wellsford highway project.



The indicative route is a result of seven months of in-depth specialist work assessing environmental, social and engineering inputs which includes getting your feedback in consultation phase one. This investigation will continue to occur over the next few months as we develop the indicative route and get comments back from you and your community.

This consultation is open for your thoughts until 28 January 2011 and a series of information days are planned for you to learn more about the project.

#### Potentially affected property

As a first step in the consultation, we have notified property owners/occupiers on the indicative route between Puhoi and Warkworth to show them the proposal and how it affects their land. We will ensure they get the information they need to understand the potential effects of the indicative route on them.

Property owners in the area north of Warkworth, who have previously been asked for property access for site investigations, will also be contacted and updated about the change in the project. Our team of specialists will continue to gather information between Warkworth and Wellsford as we look to develop a suitable solution.

As this route is a large, complicated piece of national infrastructure, it will take some time to finalise and we will not be in the property purchase phase for some time yet. There is more information on page 3 about the property process.

#### Want more information?

For more comprehensive information about the project please come to one of our public information days where specialists will be available to answer your questions or visit our website: [www.nzta.govt.nz/puhoi-wellsford](http://www.nzta.govt.nz/puhoi-wellsford).

### What's inside

- Page 2 Project maps
- Page 3 Background to indicative route
- Page 4-5 Feedback form
- Page 6 More information

### Warkworth to Wellsford update

Due to the difficult terrain and geology identified through our initial work, the NZ Transport Agency has decided that the Dome Valley and Wellsford sections require further investigation to find the best value for money solution. We are therefore not in a position to consult on this section as part of this round of consultation.

### Project objectives

As one of the roads of national significance, the Puhoi to Wellsford project will:

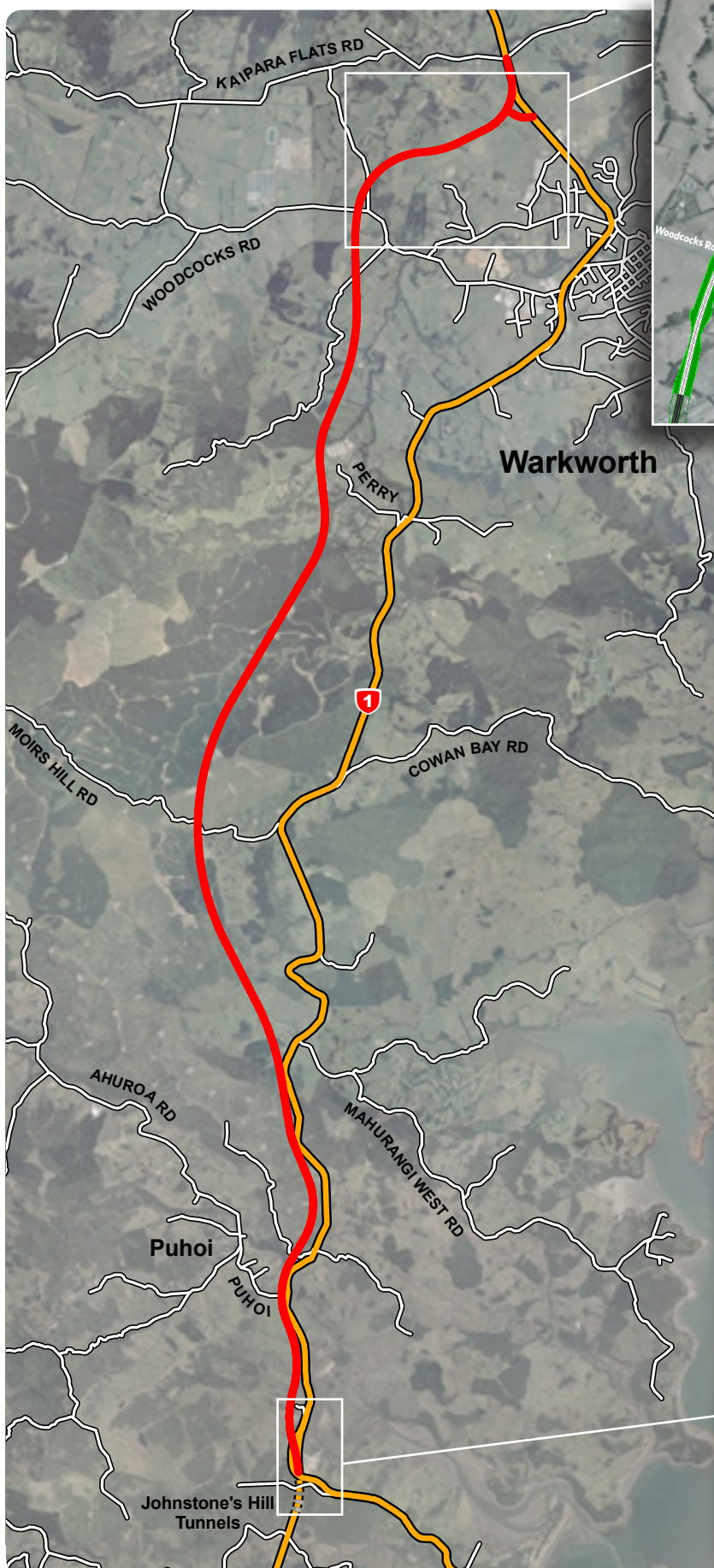
- Enhance inter-regional and national economic growth and productivity
- Improve movement of freight and people between Auckland and Northland
- Improve the connectivity between the medium to long term growth areas in the northern Rodney area
- Improve the reliability of the transport network through a more robust and safer road between Auckland and Northland.



For more information

For further information online visit:  
[www.nzta.govt.nz/puhoi-wellsford](http://www.nzta.govt.nz/puhoi-wellsford)

# Puhoi to Warkworth: Indicative route



These drawings are indicative only - more detailed designs will follow.

If you would like more detail on the route, please come to our public information days - see back page for more details.



# How we developed the indicative route

**Step one:** We prepared a “long list” of routes based on where it was possible to build a highway to meet the project’s objectives. This assessment included environment and topographical information and provided us with 6-12 options (depending on the area) mainly around the existing highway, but with some as far west as the Auckland to Northland railway line.

**Step two:** Based on a comprehensive technical assessment, we reduced this to a “short list” of options for further, more detailed evaluation.

**Step three:** The “short list” options were then assessed in more detail, taking into account technical considerations including transport, environmental, social and economic factors, and feedback from the public to determine the indicative route.

## The indicative route

The area shown on the map is described as a ‘footprint’. We have used our specialists and engineers to estimate where we will need more land for earthworks (because the ground conditions vary along the route). We have also allowed room for other features required during construction such as stormwater ponds, disposal sites, etc.

As we are consulting on an indicative footprint, it is important to remember this route may change as we gain a better understanding of the environment and complete further engineering design. We have done the best we can to show this as accurately as possible but please be aware that this may change in the future.

## Warkworth access

Access to Warkworth has been selected based on public feedback and a range of technical studies. The proposal ensures that the overall objectives of the project are met and that:

- The access is close to the town centre providing easy use for locals and visitors using the existing SH1.
- Through traffic is shifted away from Hill Street improving its operation.
- The proposed access allows for a potential Matakana link road to the eastern beaches, however, this will need to be discussed further with Auckland Council.
- There is access to the Woodcocks Road industrial and commercial areas via Auckland Council’s planned western collector. This could be enhanced with a potential new link road from the bypass to Hudson Road, however, this will need to be discussed further with Auckland Council.
- Increases in traffic on Woodcocks Road by the secondary school and on Hill Street by the primary school are avoided.

### Impact on Hill Street upgrade project

As part of the existing State Highway 1 Warkworth intersection improvements the NZTA is planning an upgrade of the Hill Street intersection. This upgrade will ensure that there is a long-term solution that meets both current needs and takes into account the construction of the bypass. This route will continue to manage the traffic through Warkworth and out to the east coast. Once the bypass opens, some minor modifications may be required to help manage changes in direction to the main traffic flows.

## Puhoi/Mahurangi West access

In the previous round of consultation we sought feedback on only providing access points to the proposed highway at Warkworth and Wellsford. We received a large amount of feedback requesting that an access point also be provided for the Puhoi/Mahurangi West area and we have been considering this feedback.

One of the key considerations is the current and future plans for the Puhoi, Mahurangi West, Ahuroa area. As such input from the newly formed Auckland Council is important to help us finalise any decision.

We will therefore be engaging with the Auckland Council in the upcoming months as they develop an Auckland Plan (spatial plan) which will provide guidance to the NZTA and help inform any final decisions on access locations along the new route. As we are still in the investigation phase there is still plenty of time before a decision is required.

We welcome any additional feedback that you may have.

The Auckland Council will also be undertaking public consultation as part of the development of the Auckland Plan next year. We encourage you to take the opportunity to contribute to the Auckland Plan consultation when this occurs.



## Property update

This indicative route currently affects about 60 property owners. This may change as consultation and project development continues.

When we get to the time of conducting purchase negotiations, the NZTA will follow a transparent and proven compensation process set out in the Public Works Act 1981 (overseen by Land Information NZ). This process provides for reimbursement of valuation and legal fees plus a contribution for moving costs.

If you believe you need to speak to someone about land you own then please call 0800 P2W NZTA (0800 729 6982) to arrange to speak to a member of the project’s property team.

## What happens next with Puhoi to Warkworth?

There are a lot of steps involved with finalising a route. Things that will affect this include feedback from consultation, further engineering design and getting a more detailed understanding of the environment in the project area including testing ground conditions. We will be continuing to undertake these investigations over the next 12 months and this will include understanding potential noise and visual effects.

Once we have gathered feedback from the public and have more details on the environment then we will be able to confirm a proposed route with you.

Developing the new route and preparing the consent applications and statutory processes will occur during 2011 and 2012. It may take up to a year to gain approval for the new highway once applications are lodged with the consenting authority.



Looking back towards Schedewy's Hill on State Highway 1 where the geology is particularly challenging.

## What are the roads of national significance?

The roads of national significance programme is one of New Zealand's biggest ever infrastructure investments. A key part of the government's National Infrastructure Plan, the \$10 billion programme aims to complete seven essential state highway projects to reduce congestion, improve safety and support economic growth.

The roads of national significance are:

- Puhoi to Wellsford
- Western Ring Route, Auckland
- Victoria Park, Auckland
- Waikato Expressway
- Tauranga Eastern Corridor
- Wellington Northern Corridor
- Christchurch motorways

These are considered the most urgent roading projects within or near New Zealand's five largest population centres. The NZ Transport Agency is on track to substantially complete all seven roads of national significance by 2020.



For more information

For further information online visit: [www.nzta.govt.nz/puhoi-wellsford](http://www.nzta.govt.nz/puhoi-wellsford)



## Puhoi to Warkworth

Public Information Days

**Saturday 20 November** 10-2pm, Warkworth Primary School, Hill Street, Warkworth

**Tuesday 23 November** 4-7.30pm, Old Masonic Hall, Baxter Street, Warkworth

**Thursday 25 November** 3.30-7.30pm, Puhoi Sports Club, Puhoi Domain, Puhoi

**Sunday 28 November** 10-2pm, Warkworth Primary School, Hill Street, Warkworth

The NZTA team and its specialists will be on-site to answer your questions.

For more information visit: [www.nzta.govt.nz/puhoi-wellsford](http://www.nzta.govt.nz/puhoi-wellsford) or call **0800 P2W NZTA (729 6982)**

## Our contact details

For general enquiries, or contact information about the NZ Transport Agency please check our website [www.nzta.govt.nz](http://www.nzta.govt.nz) or email us at [info@nzta.govt.nz](mailto:info@nzta.govt.nz)

Contact email: [puhoi-wellsford@nzta.govt.nz](mailto:puhoi-wellsford@nzta.govt.nz)  
Phone: 0800 P2WNZTA (0800 729 6982)  
[www.nzta.govt.nz/puhoi-wellsford](http://www.nzta.govt.nz/puhoi-wellsford)

Communication & Stakeholder Liaison Manager: Amanda Cosgrove  
Principal Project Manager: Brett Gliddon



NZ TRANSPORT AGENCY  
WAKA KOTAHI

New Zealand Government



# Puhoi to Wellsford

Feedback form

November 2010

We welcome your feedback on the indicative route. This could include comments on possible effects on the environment; the effects on your property, that of your neighbours or on your local community; and any other matters you may wish to raise. Your feedback will be taken into account as part of the ongoing development of the route of the new highway and access points. Feedback is open now and will run till 28th January 2011.

Lined area for providing feedback

### Ways to provide feedback during consultation include:

- Use the feedback form attached to this newsletter
- Attend an open day (more information below)
- Visit our website [www.nzta.govt.nz/puhoi-wellsford](http://www.nzta.govt.nz/puhoi-wellsford)
- Email us at [puhoi-wellsford@nzta.govt.nz](mailto:puhoi-wellsford@nzta.govt.nz)
- Call us on **0800 P2W NZTA (0800 729 6982)**
- Write to us at:
  - FreePost Authority Number 66927,
  - Puhoi to Wellsford road of national significance,
  - PO Box 9806,
  - Newmarket,
  - Auckland 1149.

Feedback on any aspect of the project is welcomed. The closing date is Friday 28 January 2011.

*(continue overleaf)*

Tear off along perforation

Feedback cont.

---



---



---



---



---



---



---



---



---



---

Your contact details:

Title: Mr/Mrs/Ms/Dr

Name: \_\_\_\_\_

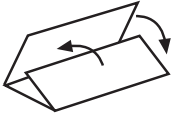
Address: \_\_\_\_\_

Email: \_\_\_\_\_

Phone: \_\_\_\_\_

To opt in for email updates, please tick box.

*All feedback needs to be returned  
by 28 January 2011.*



Fold on dotted lines and  
tape/staple ends together

FreePost Authority Number 66927



FreePost Authority Number 66927,  
Puhoi to Wellsford road of national significance,  
PO Box 9806,  
Newmarket,  
Auckland 1149.

