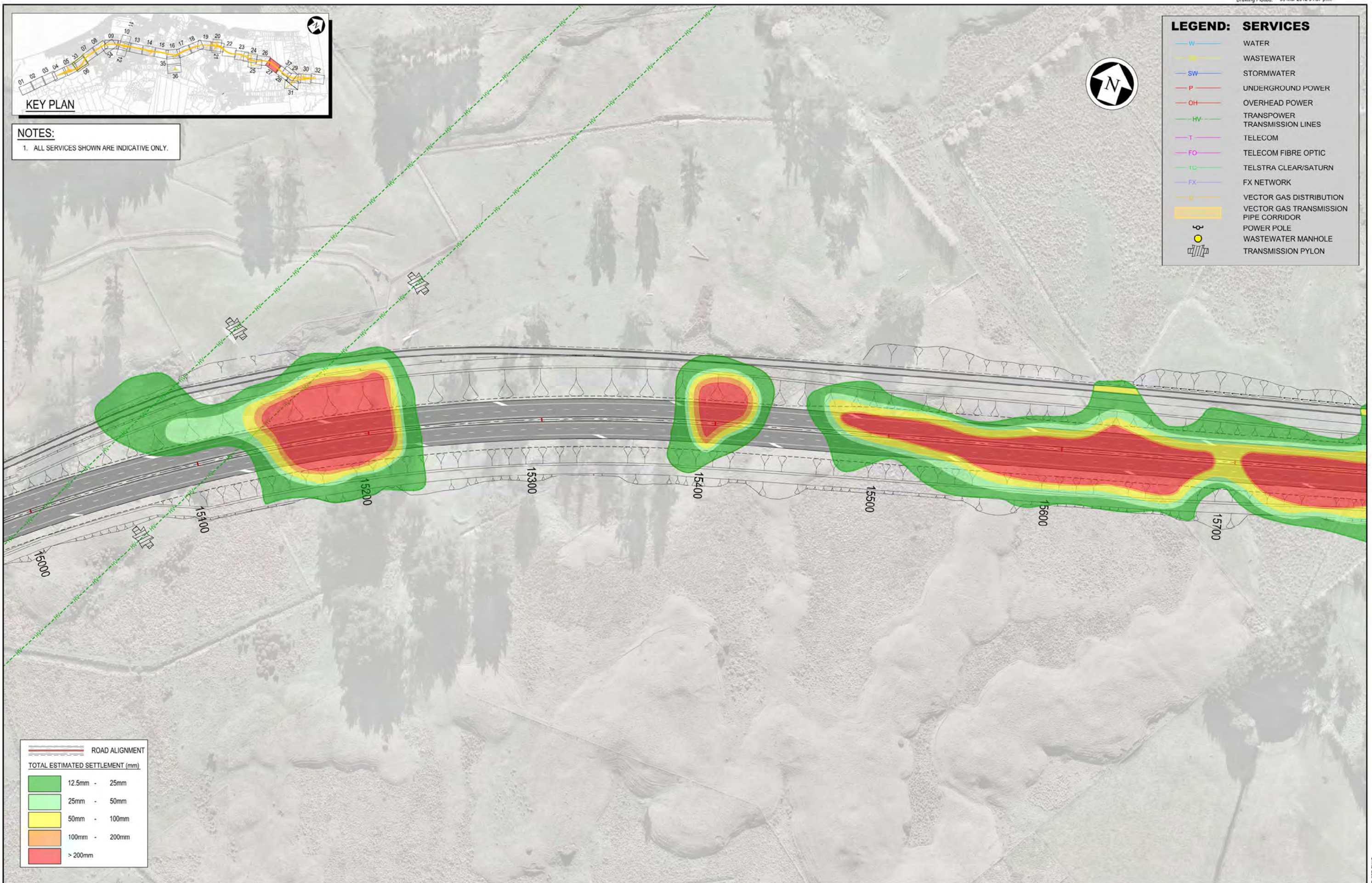




NOTES:
1. ALL SERVICES SHOWN ARE INDICATIVE ONLY.

LEGEND: SERVICES

- W WATER
- SS WASTEWATER
- SW STORMWATER
- P UNDERGROUND POWER
- OH OVERHEAD POWER
- HV TRANSPOWER TRANSMISSION LINES
- T TELECOM
- FO TELECOM FIBRE OPTIC
- TC TELSTRA CLEAR/SATURN
- FX FX NETWORK
- O VECTOR GAS DISTRIBUTION
- VECTOR GAS TRANSMISSION PIPE CORRIDOR
- POWER POLE
- WASTEWATER MANHOLE
- TRANSMISSION PYLON



ROAD ALIGNMENT

TOTAL ESTIMATED SETTLEMENT (mm)

- 12.5mm - 25mm
- 25mm - 50mm
- 50mm - 100mm
- 100mm - 200mm
- > 200mm

NOTES:

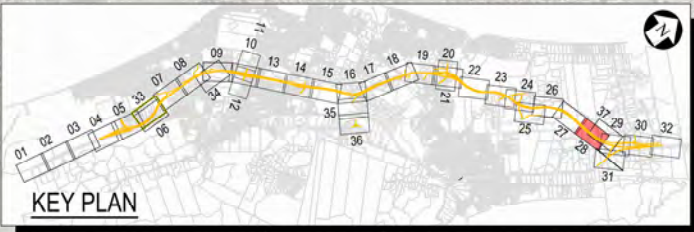
Original Scale (A3)			
1:2000			
1	AEE LODGEMENT	NRN	15.03.12
Revision:	Amendment	Approved:	Date:



Project: MACKAYS TO PEKA PEKA EXPRESSWAY

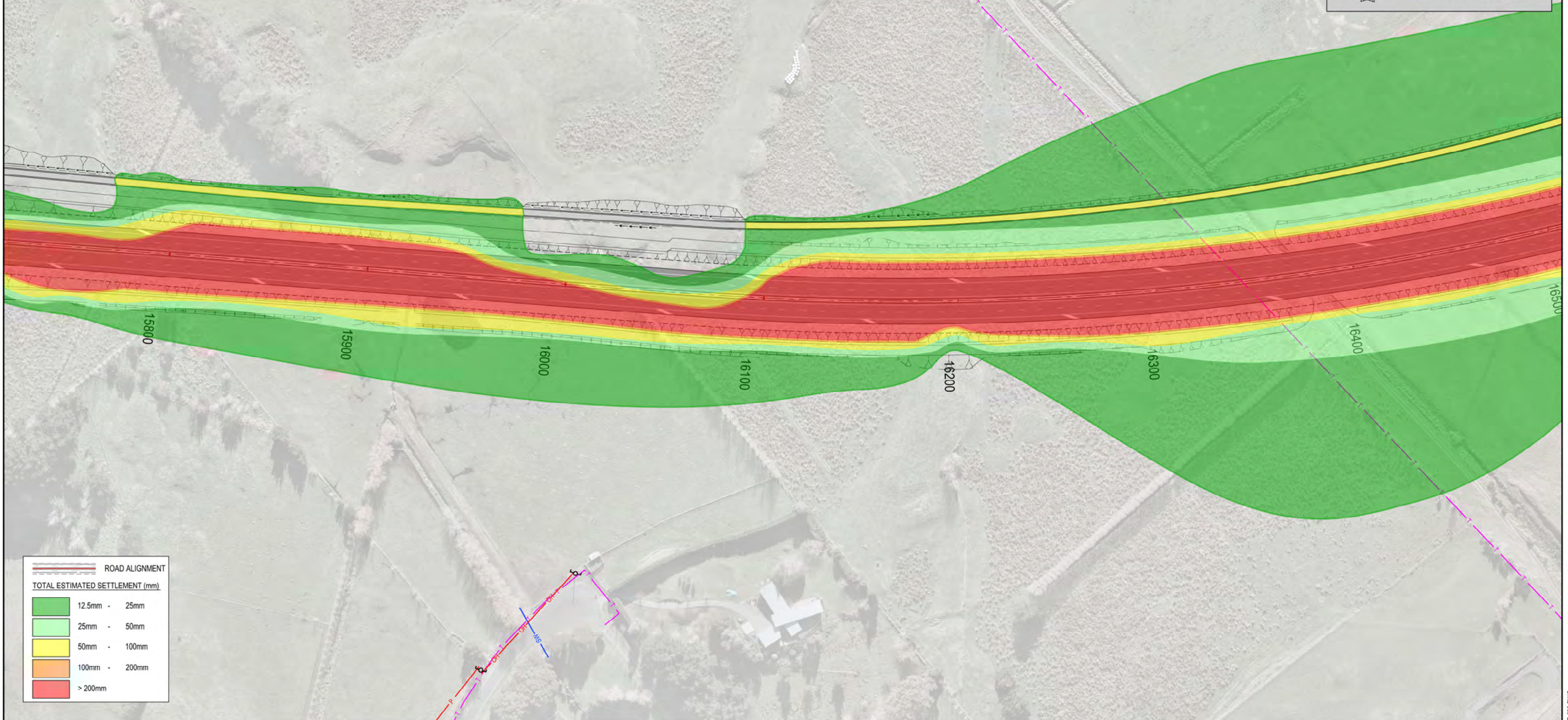
EXISTING SERVICES SETTLEMENT CONTOURS

FOR CONSENTING	
Document ID: M2PP-AEE-GWG	Rev: 1
GT-SE-227	



NOTES:
1. ALL SERVICES SHOWN ARE INDICATIVE ONLY.

LEGEND: SERVICES	
W	WATER
SS	WASTEWATER
SW	STORMWATER
P	UNDERGROUND POWER
OH	OVERHEAD POWER
HV	TRANSPOWER TRANSMISSION LINES
T	TELECOM
FO	TELECOM FIBRE OPTIC
TC	TELSTRA CLEAR/SATURN
FX	FX NETWORK
G	VECTOR GAS DISTRIBUTION
[Yellow Box]	VECTOR GAS TRANSMISSION PIPE CORRIDOR
[Circle]	POWER POLE
[Circle]	WASTEWATER MANHOLE
[Trapezoid]	TRANSMISSION PYLON



ROAD ALIGNMENT	
TOTAL ESTIMATED SETTLEMENT (mm)	
[Green Box]	12.5mm - 25mm
[Light Green Box]	25mm - 50mm
[Yellow Box]	50mm - 100mm
[Orange Box]	100mm - 200mm
[Red Box]	> 200mm

NOTES:

Original Scale (A3)	
1:2000	
1 AEE LODGEMENT	NRN 15.03.12
Revision: Amendment	Approved: Date



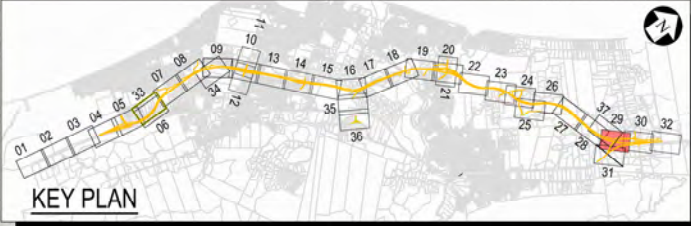
Project: **MACKAYS TO PEKA PEKA EXPRESSWAY**

FOR CONSENTING

EXISTING SERVICES SETTLEMENT CONTOURS

Document ID: M2PP-AEE-GWG Rev: 1

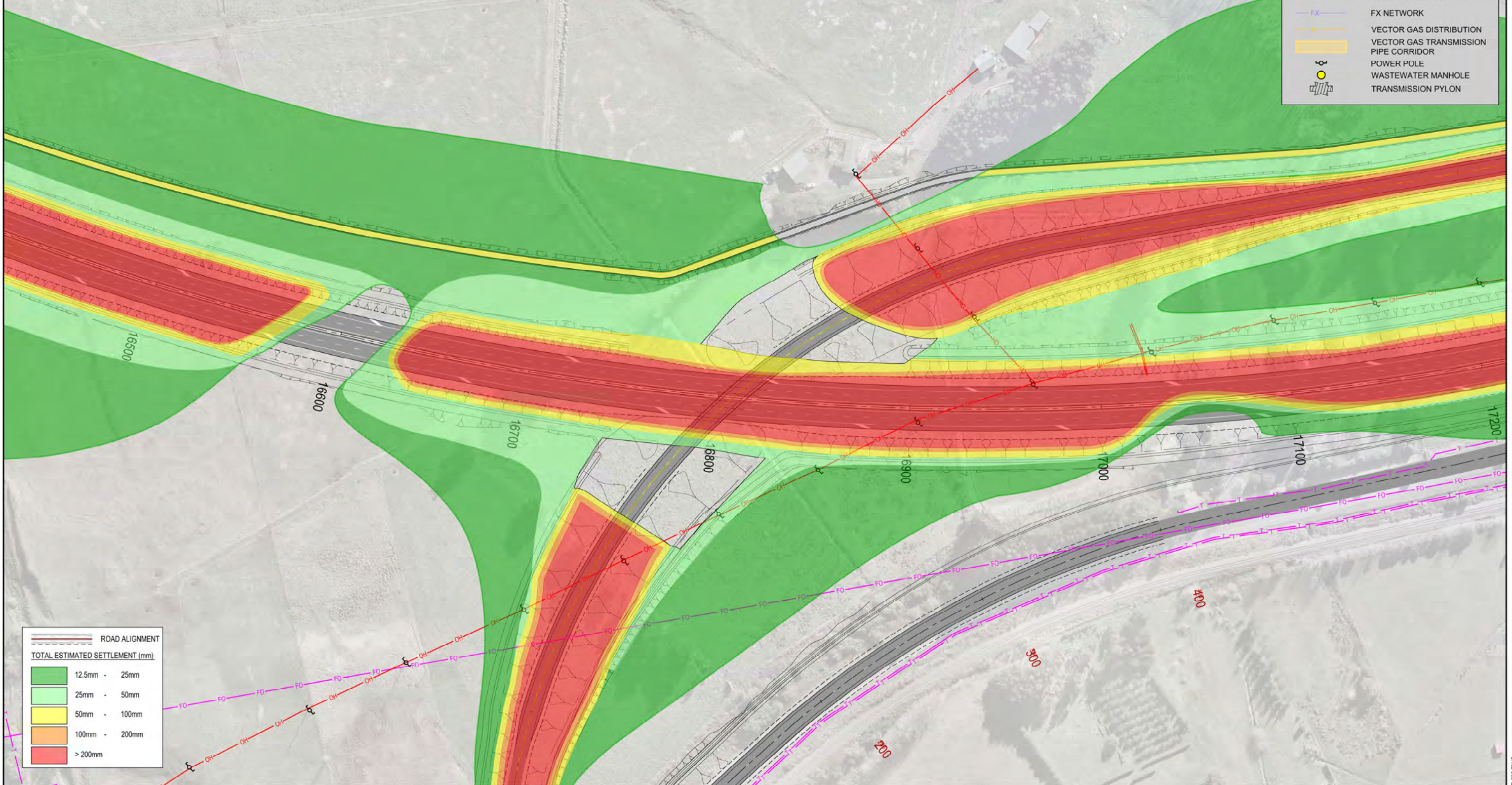
Planning No: **GT-SE-228**



NOTES:
1. ALL SERVICES SHOWN ARE INDICATIVE ONLY.

LEGEND: SERVICES

W	WATER
SS	WASTEWATER
SW	STORMWATER
P	UNDERGROUND POWER
OH	OVERHEAD POWER
HV	TRANSPOWER TRANSMISSION LINES
T	TELECOM
FO	TELECOM FIBRE OPTIC
IC	TELSTRA CLEAR/SATURN
FX	FX NETWORK
G	VECTOR GAS DISTRIBUTION
	VECTOR GAS TRANSMISSION PIPE CORRIDOR
⊕	POWER POLE
⊙	WASTEWATER MANHOLE
⊕	TRANSMISSION PYLON



ROAD ALIGNMENT

TOTAL ESTIMATED SETTLEMENT (mm)

Green	12.5mm - 25mm
Light Green	25mm - 50mm
Yellow	50mm - 100mm
Orange	100mm - 200mm
Red	> 200mm

NOTES:

Original Scale (A3)	1:2000		
1	AEE LODGEMENT	NRN	15.03.12
Revision:	Amendment	Approved:	Date:

<p>NZ TRANSPORT AGENCY WAKA KOTAHĪ</p>	
Project:	MACKAYS TO PEKA PEKA EXPRESSWAY
Date:	FOR CONSENTING
Document ID:	M2PP-AEE-GWG
Revision No:	1
Project:	GT-SE-229

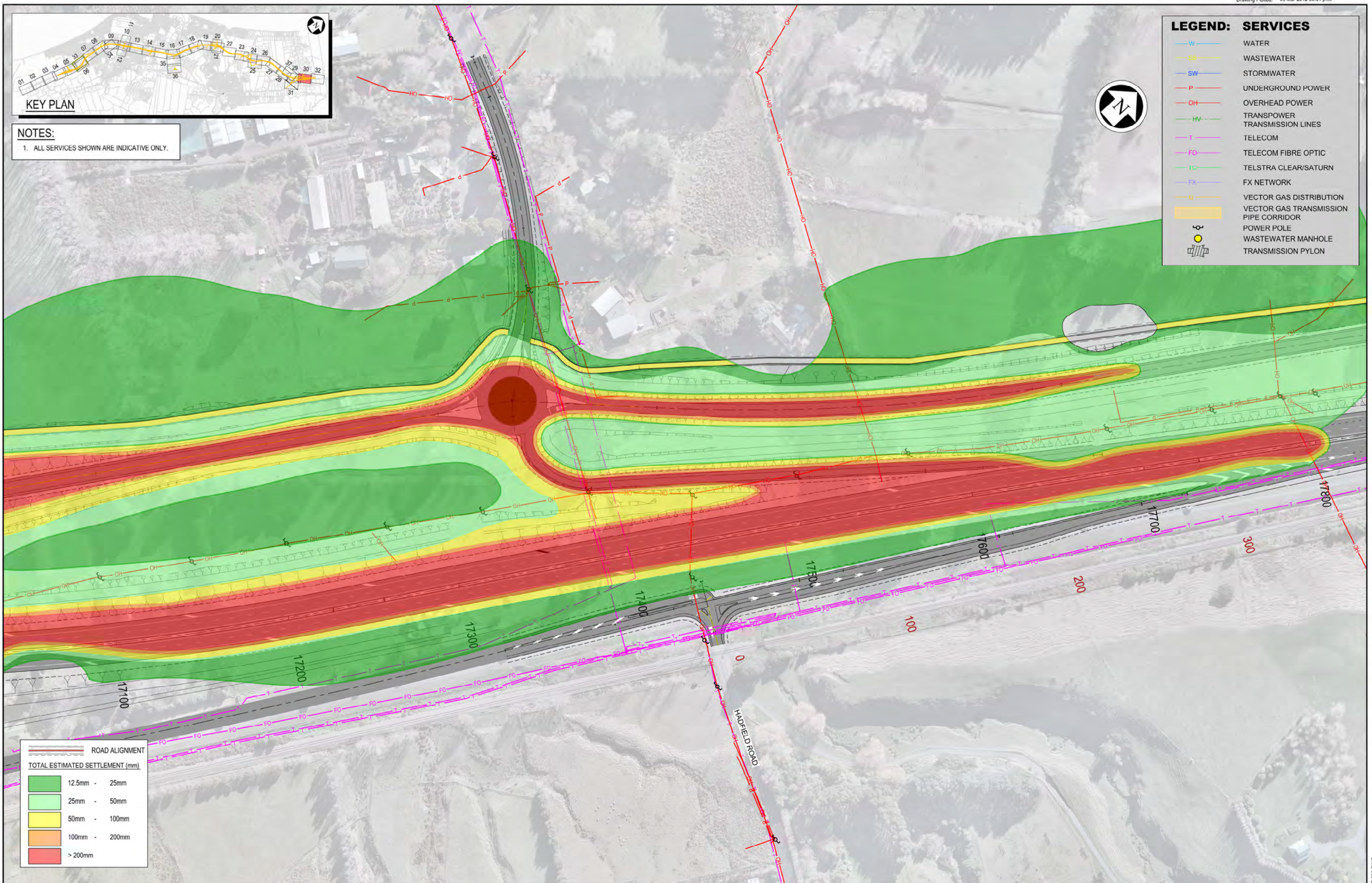
<p>NZ TRANSPORT AGENCY WAKA KOTAHĪ</p>	
Project:	MACKAYS TO PEKA PEKA EXPRESSWAY
Date:	FOR CONSENTING
Document ID:	M2PP-AEE-GWG
Revision No:	1
Project:	GT-SE-229



NOTES:
1. ALL SERVICES SHOWN ARE INDICATIVE ONLY.

LEGEND: SERVICES

W	WATER
SS	WASTEWATER
SW	STORMWATER
P	UNDERGROUND POWER
OH	OVERHEAD POWER
HV	TRANSMISSION LINES
T	TELECOM
FO	TELECOM FIBRE OPTIC
TC	TELSTRA CLEAR/SATURN
FX	FX NETWORK
G	VECTOR GAS DISTRIBUTION
GC	VECTOR GAS TRANSMISSION
CC	PIPE CORRIDOR
PP	POWER POLE
WM	WASTEWATER MANHOLE
TP	TRANSMISSION PYLON



ROAD ALIGNMENT

TOTAL ESTIMATED SETTLEMENT (mm)

Green	12.5mm - 25mm
Light Green	25mm - 50mm
Yellow	50mm - 100mm
Orange	100mm - 200mm
Red	> 200mm

NOTES:

Original Scale (A3)	1:2000
1 AEE LODGEMENT	NRN 15.03.12
Revision: Amendment	Approved: Date:



Project: **MACKAYS TO PEKA PEKA EXPRESSWAY**

Title: **EXISTING SERVICES SETTLEMENT CONTOURS**

FOR CONSENTING

Document ID: M2PP-AEE-GWG Rev: 1

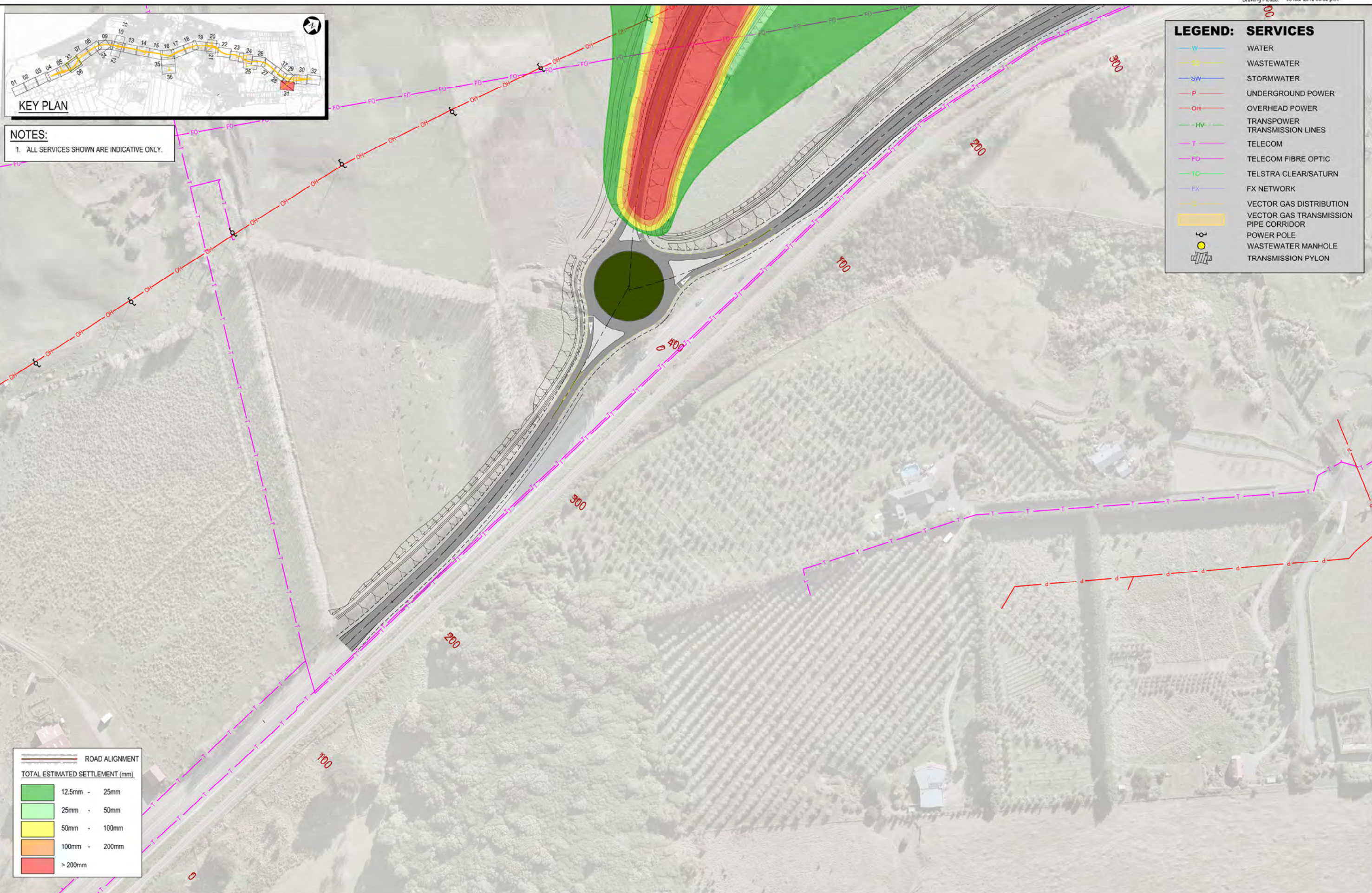
Drawing No: **GT-SE-230**



NOTES:
1. ALL SERVICES SHOWN ARE INDICATIVE ONLY.

LEGEND: SERVICES

- W WATER
- SS WASTEWATER
- SW STORMWATER
- P UNDERGROUND POWER
- OH OVERHEAD POWER
- HV TRANSPOWER TRANSMISSION LINES
- T TELECOM
- FO TELECOM FIBRE OPTIC
- TC TELSTRA CLEAR/SATURN
- FX FX NETWORK
- G VECTOR GAS DISTRIBUTION
- VECTOR GAS TRANSMISSION PIPE CORRIDOR
- POWER POLE
- WASTEWATER MANHOLE
- TRANSMISSION PYLON



ROAD ALIGNMENT

TOTAL ESTIMATED SETTLEMENT (mm)

	12.5mm - 25mm
	25mm - 50mm
	50mm - 100mm
	100mm - 200mm
	> 200mm

NOTES:

Original Scale (A3)	
1:2000	
1 AEE LODGEMENT	NRN 15.03.12
Revision: Amendment	Approved: Date:



Project: MACKAYS TO PEKA PEKA EXPRESSWAY

EXISTING SERVICES SETTLEMENT CONTOURS

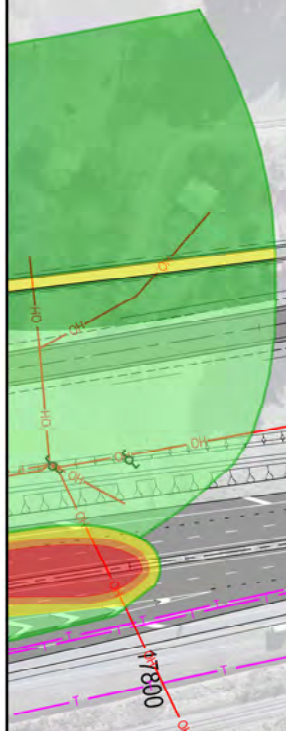
FOR CONSENTING	
Document ID: M2PP-AEE-GWG	Rev: 1
GT-SE-231	



NOTES:
1. ALL SERVICES SHOWN ARE INDICATIVE ONLY.

LEGEND: SERVICES

- W WATER
- SS WASTEWATER
- SW STORMWATER
- P UNDERGROUND POWER
- OH OVERHEAD POWER
- HV TRANSPower TRANSMISSION LINES
- T TELECOM
- FO TELECOM FIBRE OPTIC
- TC TELSTRA CLEAR/SATURN
- FX FX NETWORK
- G VECTOR GAS DISTRIBUTION
- VECTOR GAS TRANSMISSION PIPE CORRIDOR
- POWER POLE
- WASTEWATER MANHOLE
- TRANSMISSION PYLON



ROAD ALIGNMENT	
TOTAL ESTIMATED SETTLEMENT (mm)	
	12.5mm - 25mm
	25mm - 50mm
	50mm - 100mm
	100mm - 200mm
	> 200mm

NOTES:

Original Scale (A3)			
1:2000			
1 AEE LODGEMENT	NRN	15.03.12	
Revision: Amendment	Approved:	Date:	



Project: MACKAYS TO PEKA PEKA EXPRESSWAY

Title: EXISTING SERVICES SETTLEMENT CONTOURS

FOR CONSENTING	
Document ID: M2PP-AEE-GWG	Rev: 1
GT-SE-232	