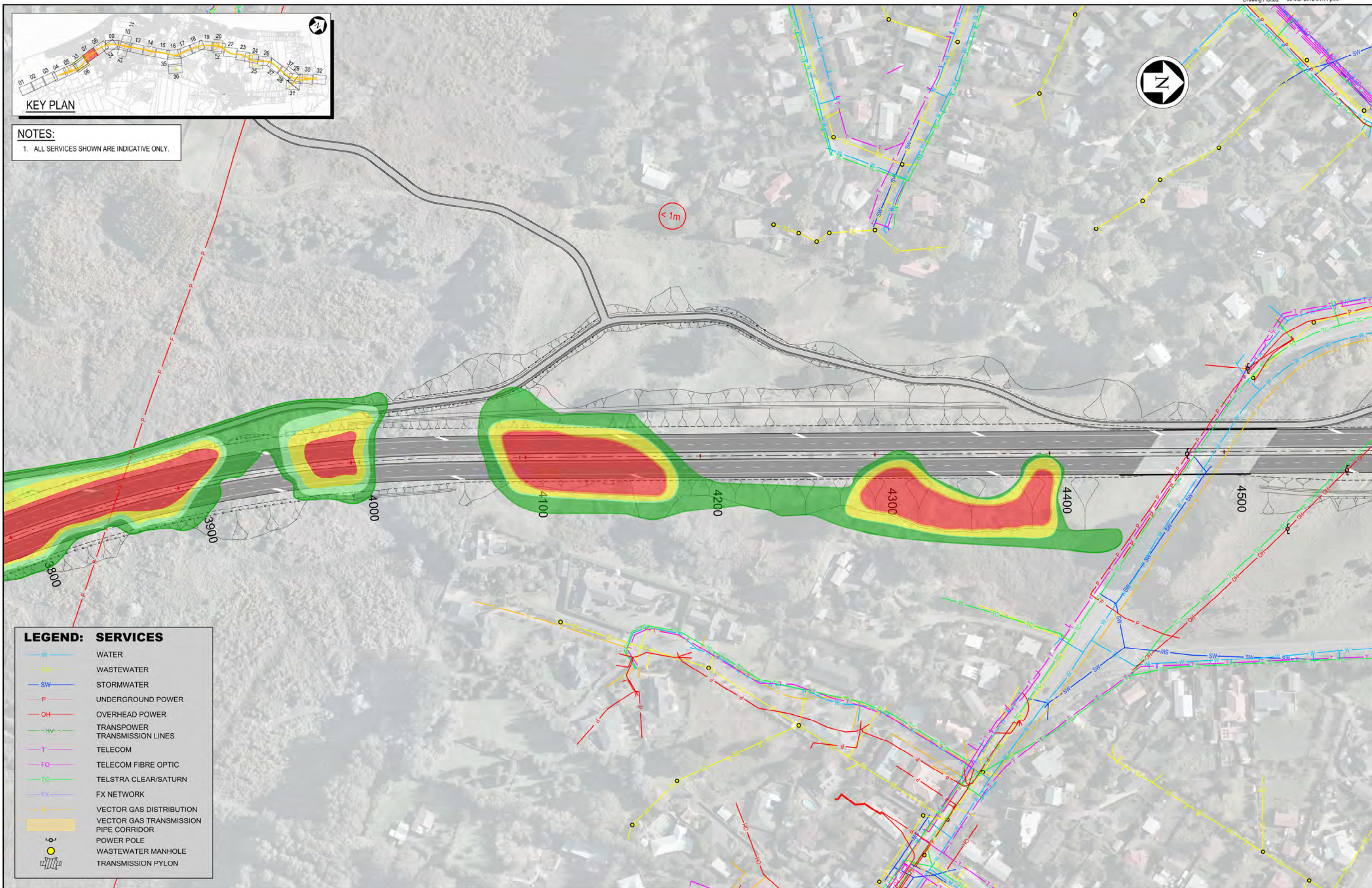




**NOTES:**  
1. ALL SERVICES SHOWN ARE INDICATIVE ONLY.



**LEGEND: SERVICES**

W	WATER
SS	WASTEWATER
SW	STORMWATER
P	UNDERGROUND POWER
OH	OVERHEAD POWER
HV	TRANSPOWER TRANSMISSION LINES
T	TELECOM
FO	TELECOM FIBRE OPTIC
TC	TELSTRA CLEAR/SATURN
FX	FX NETWORK
G	VECTOR GAS DISTRIBUTION
Yellow shaded area	VECTOR GAS TRANSMISSION PIPE CORRIDOR
Circle with dot	POWER POLE
Circle with cross	WASTEWATER MANHOLE
Vertical lines	TRANSMISSION PYLON

NOTES:

Original Scale (A3)

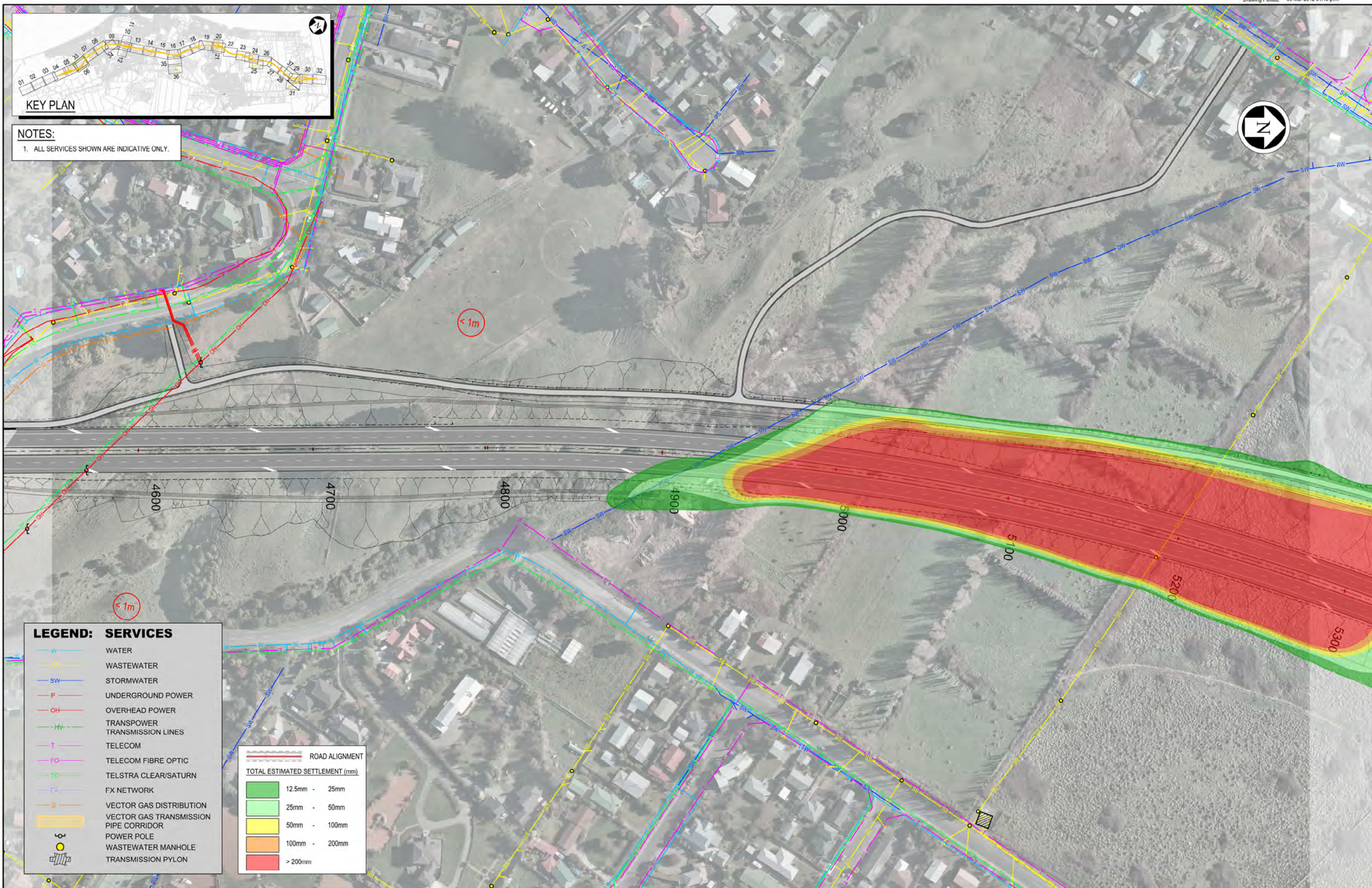
1	AEE LODGEMENT	NRN	15.03.12
Revision:	Amendment	Approved:	Date:



**MACKAYS TO PEKA PEKA EXPRESSWAY**

EXISTING SERVICES SETTLEMENT CONTOURS

Project:	FOR CONSENTING
Document ID:	M2PP-AEE-GWG
Revision No.:	1
Drawing No.:	GT-SE-207



**NOTES:**  
1. ALL SERVICES SHOWN ARE INDICATIVE ONLY.

**LEGEND: SERVICES**

- W WATER
- SS WASTEWATER
- SW STORMWATER
- P UNDERGROUND POWER
- OH OVERHEAD POWER
- HV TRANSPower TRANSMISSION LINES
- T TELECOM
- FO TELECOM FIBRE OPTIC
- TC TELSTRA CLEAR/SATURN
- FX FX NETWORK
- S VECTOR GAS DISTRIBUTION
- VECTOR GAS TRANSMISSION PIPE CORRIDOR
- POWER POLE
- WASTEWATER MANHOLE
- TRANSMISSION PYLON

ROAD ALIGNMENT	
TOTAL ESTIMATED SETTLEMENT (mm)	
	12.5mm - 25mm
	25mm - 50mm
	50mm - 100mm
	100mm - 200mm
	> 200mm

NOTES:

Original Scale (A3)			
1:2000			
1 AEE LODGEMENT	NRN	15.03.12	
Revision: Amendment	Approved:	Date:	

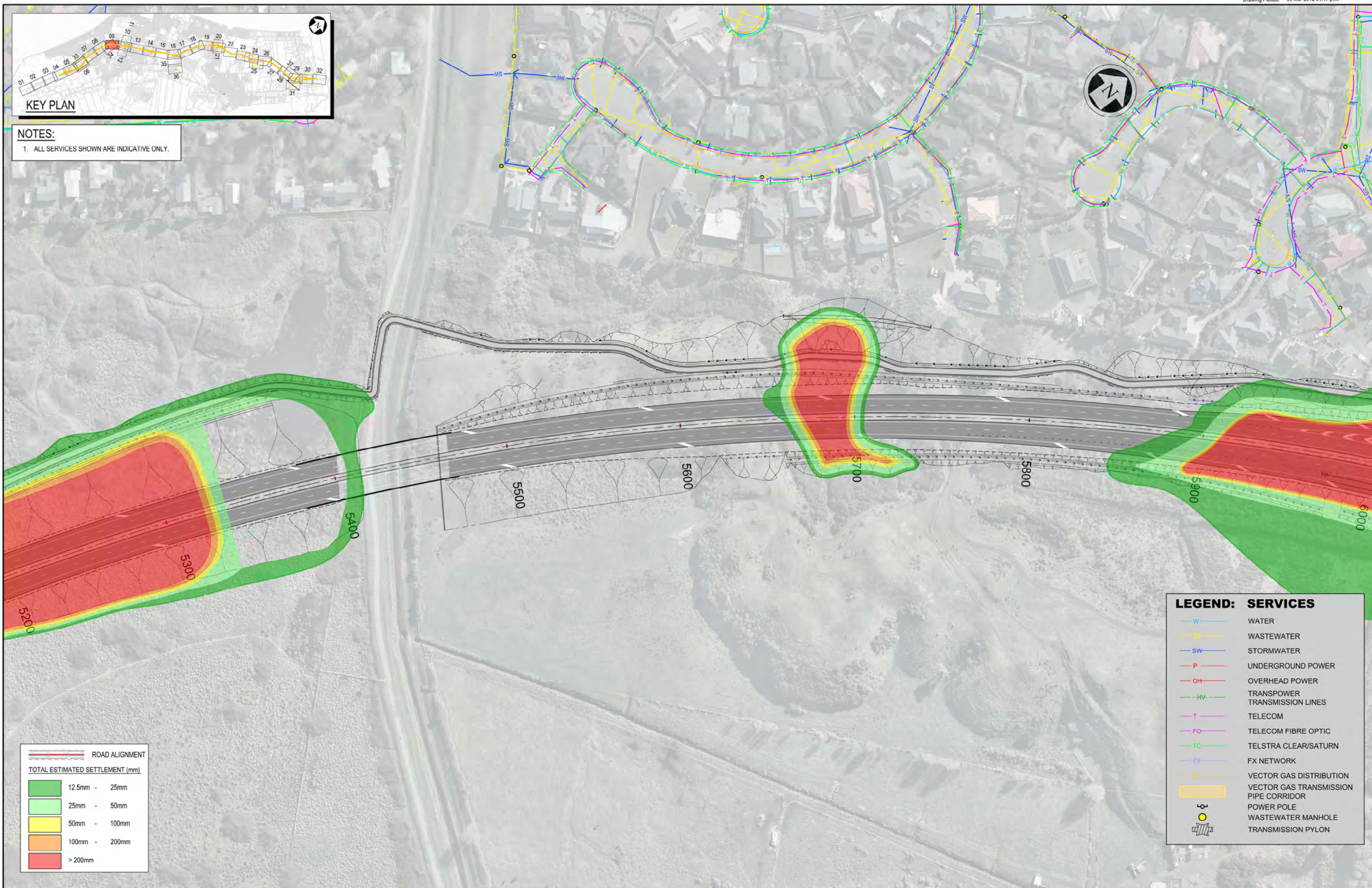


Project: **MACKAYS TO PEKA PEKA EXPRESSWAY**

FOR CONSENTING

Document ID: M2PP-AEE-GWG Rev: 1

Project No: **GT-SE-208**



**NOTES:**  
 1. ALL SERVICES SHOWN ARE INDICATIVE ONLY.

ROAD ALIGNMENT	
TOTAL ESTIMATED SETTLEMENT (mm)	
	12.5mm - 25mm
	25mm - 50mm
	50mm - 100mm
	100mm - 200mm
	> 200mm

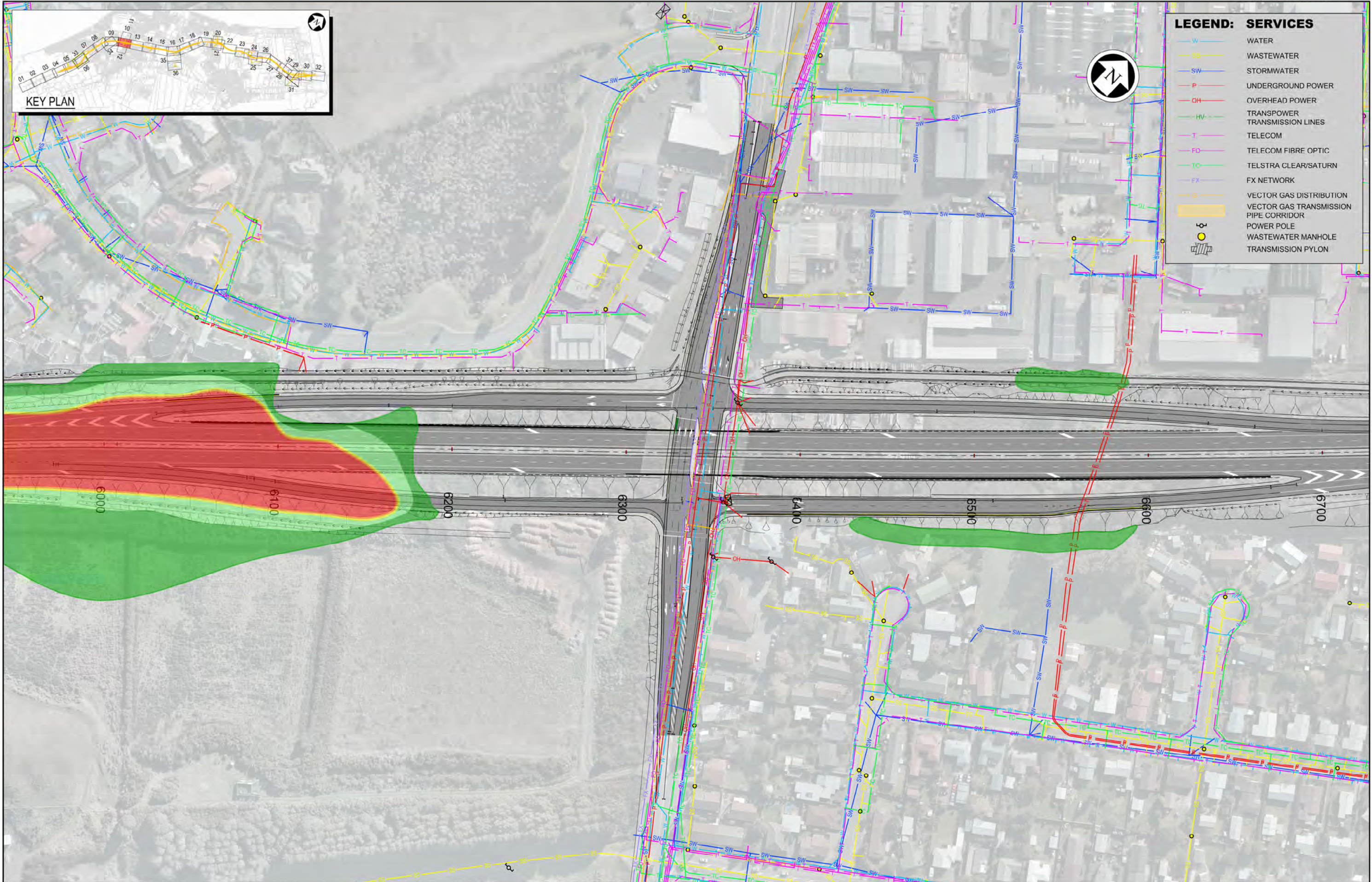
LEGEND: SERVICES	
	WATER
	WASTEWATER
	STORMWATER
	UNDERGROUND POWER
	OVERHEAD POWER
	TRANSPower TRANSMISSION LINES
	TELECOM
	TELECOM FIBRE OPTIC
	TELSTRA CLEAR/SATURN
	FX NETWORK
	VECTOR GAS DISTRIBUTION
	VECTOR GAS TRANSMISSION PIPE CORRIDOR
	POWER POLE
	WASTEWATER MANHOLE
	TRANSMISSION PYLON

NOTES:

Original Scale (A3)			
1	AEE LODGEMENT	NRN	15.03.12
Revision:	Amendment	Approved:	Date:



Project: <b>MACKAYS TO PEKA PEKA EXPRESSWAY</b>	
Title: <b>EXISTING SERVICES SETTLEMENT CONTOURS</b>	
Date: FOR CONSENTING	Rev: 1
Document ID: M2PP-AEE-GWG	Project No: <b>GT-SE-209</b>



**LEGEND: SERVICES**

- WATER
- WASTEWATER
- STORMWATER
- UNDERGROUND POWER
- OVERHEAD POWER
- TRANSMISSION LINES
- TELECOM
- TELECOM FIBRE OPTIC
- TELSTRA CLEAR/SATURN
- FX NETWORK
- VECTOR GAS DISTRIBUTION
- VECTOR GAS TRANSMISSION PIPE CORRIDOR
- POWER POLE
- WASTEWATER MANHOLE
- TRANSMISSION PYLON

NOTES:

Original Scale (A3)				
1	AEE LODGEMENT	NRN	15.03.12	
Revision:	Amendment	Approved:	Date:	



**MACKAYS TO PEKA PEKA EXPRESSWAY**

EXISTING SERVICES SETTLEMENT CONTOURS

FOR CONSENTING	
Document ID: M2PP-AEE-GWG	Rev: A
<b>GT-SE-210</b>	



**NOTES:**  
1. ALL SERVICES SHOWN ARE INDICATIVE ONLY.



**LEGEND: SERVICES**

W	WATER
SS	WASTEWATER
SW	STORMWATER
P	UNDERGROUND POWER
OH	OVERHEAD POWER
HV	TRANSPOWER TRANSMISSION LINES
T	TELECOM
FO	TELECOM FIBRE OPTIC
TC	TELSTRA CLEAR/SATURN
FX	FX NETWORK
○	VECTOR GAS DISTRIBUTION
○	VECTOR GAS TRANSMISSION PIPE CORRIDOR
●	POWER POLE
●	WASTEWATER MANHOLE
■	TRANSMISSION PYLON

NOTES:

Original Scale (A3)			
1	AEE LODGEMENT	NRN	15.03.12
Revision:	Amendment	Approved:	Date:



Project: **MACKAYS TO PEKA PEKA EXPRESSWAY**

Title: **EXISTING SERVICES SETTLEMENT CONTOURS**

FOR CONSENTING	
Document ID: M2PP-AEE-GWG	Rev: 1
Drawing No: <b>GT-SE-211</b>	