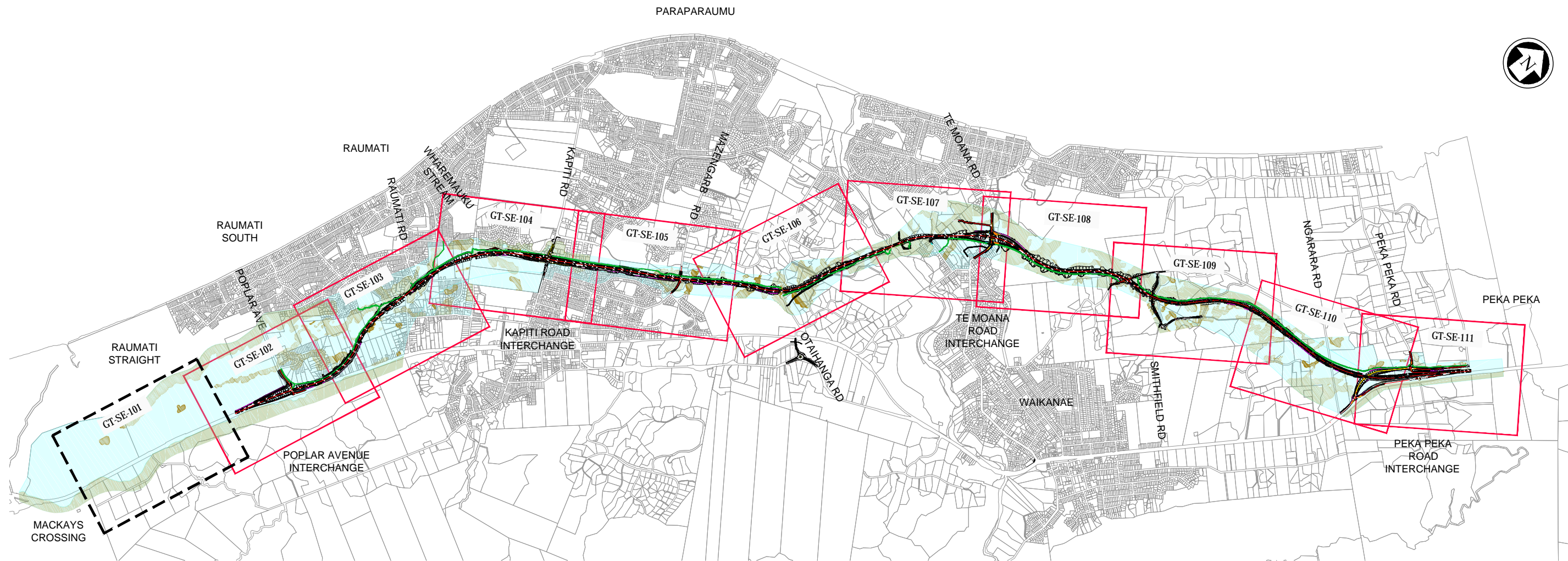


Appendix B

# Peat Contour Plans and Typical Peat Treatment Details



INDICATES SHEETS NOT USED

NOTES:

Original Scale (A3)  
NTS

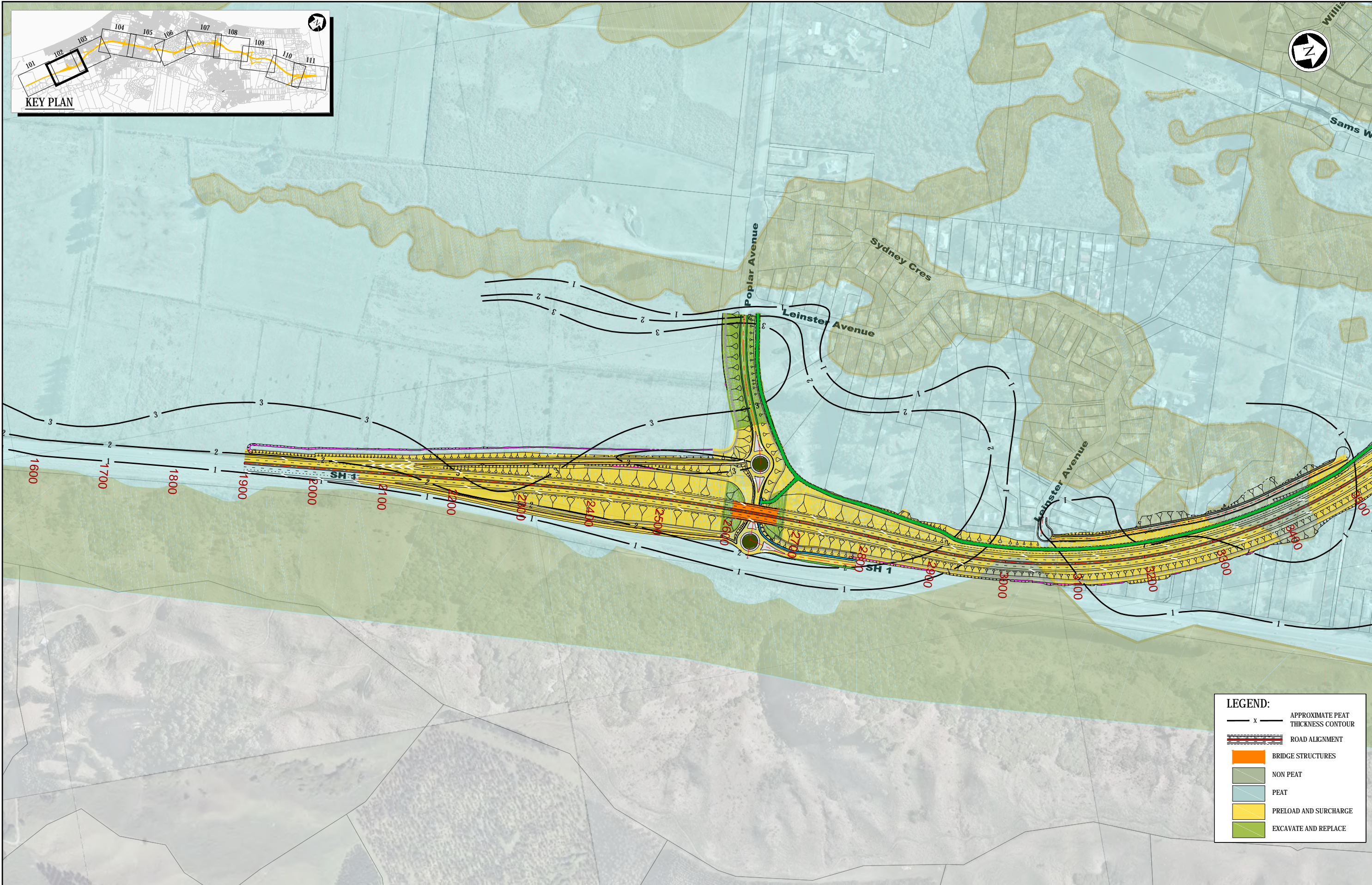
Revision	Amendment	NRN	Approved	Date
1	AEE LODGEMENT	NRN		15.03.12



Project: **MACKAYS TO PEKA PEKA EXPRESSWAY**

Title: **PEAT THICKNESS CONTOURS AND PEAT TREATMENT SHEET INDEX**

State:	FOR CONSENTING
Document ID:	M2PP-AEE-DWG
Drawing No:	<b>CV-EW-100</b>
Rev:	1



**LEGEND:**

- APPROXIMATE PEAT THICKNESS CONTOUR
- ROAD ALIGNMENT
- BRIDGE STRUCTURES
- NON PEAT
- PEAT
- PRELOAD AND SURCHARGE
- EXCAVATE AND REPLACE

NOTES:  
 1. PROPOSED PEAT TREATMENT OPTIONS SHOWN. THESE METHODS ARE INTERCHANGEABLE AND MAY VARY FROM OPTION SHOWN.

Original Scale (A3)  
 1:5000

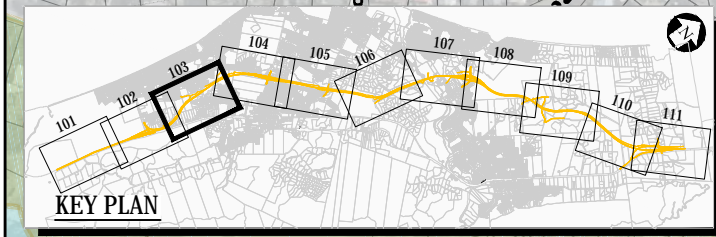
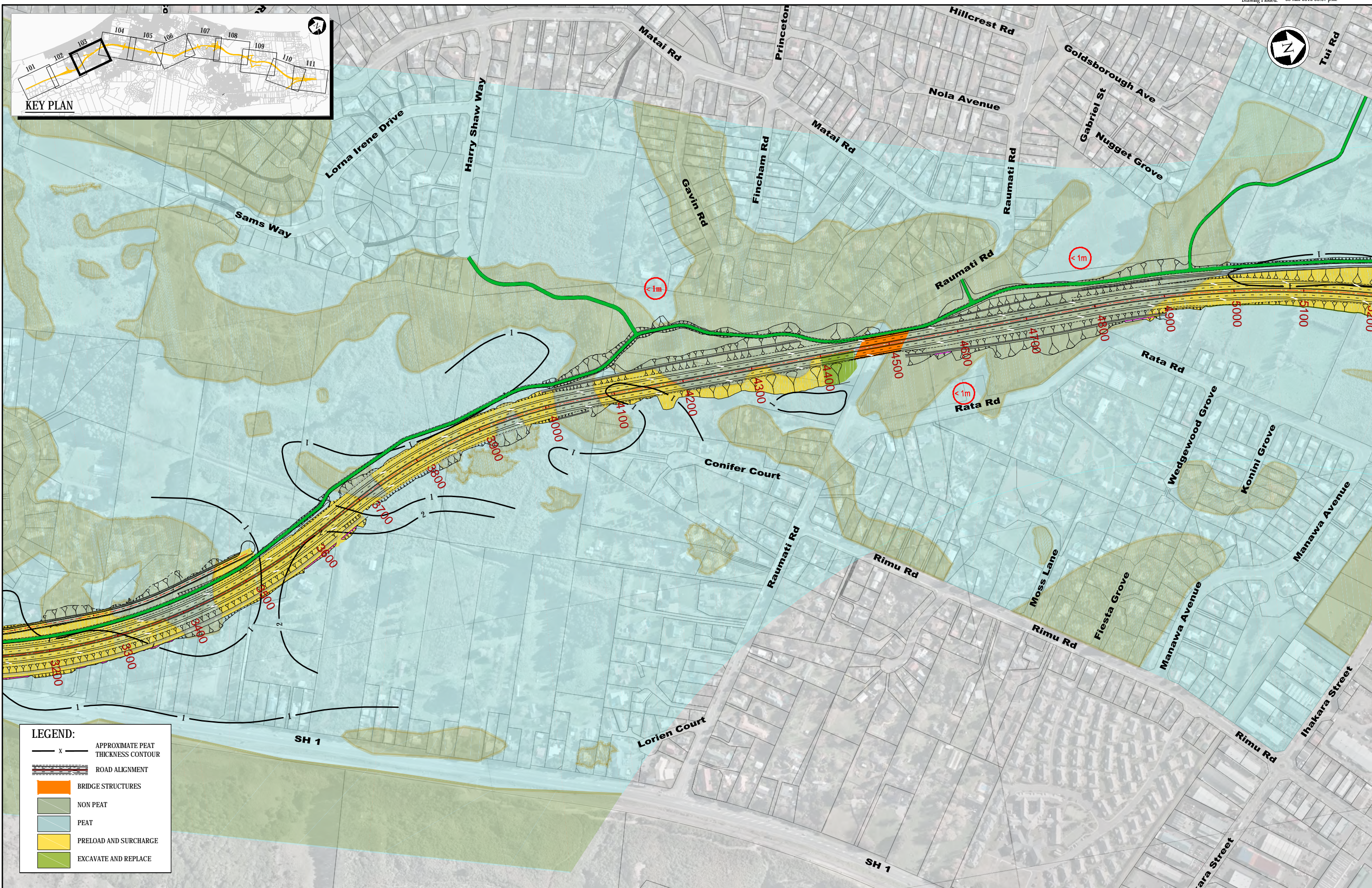
Revision	Amendment	NRN	Approved	Date
1	AEE LODGEMENT			15.03.12



Project: **MACKAYS TO PEKA PEKA EXPRESSWAY**

Title: **PEAT THICKNESS CONTOURS AND PEAT TREATMENT SHEET 2 OF 11**

State:	FOR CONSENTING
Document ID:	M2PP-AEE-DWG
Drawing No:	CV-EW-102
Rev:	1



**LEGEND:**

- APPROXIMATE PEAT THICKNESS CONTOUR
- ROAD ALIGNMENT
- BRIDGE STRUCTURES
- NON PEAT
- PEAT
- PRELOAD AND SURCHARGE
- EXCAVATE AND REPLACE

NOTES:  
 1. PROPOSED PEAT TREATMENT OPTIONS SHOWN. THESE METHODS ARE INTERCHANGEABLE AND MAY VARY FROM OPTION SHOWN.

Original Scale (A3)  
 1:5000

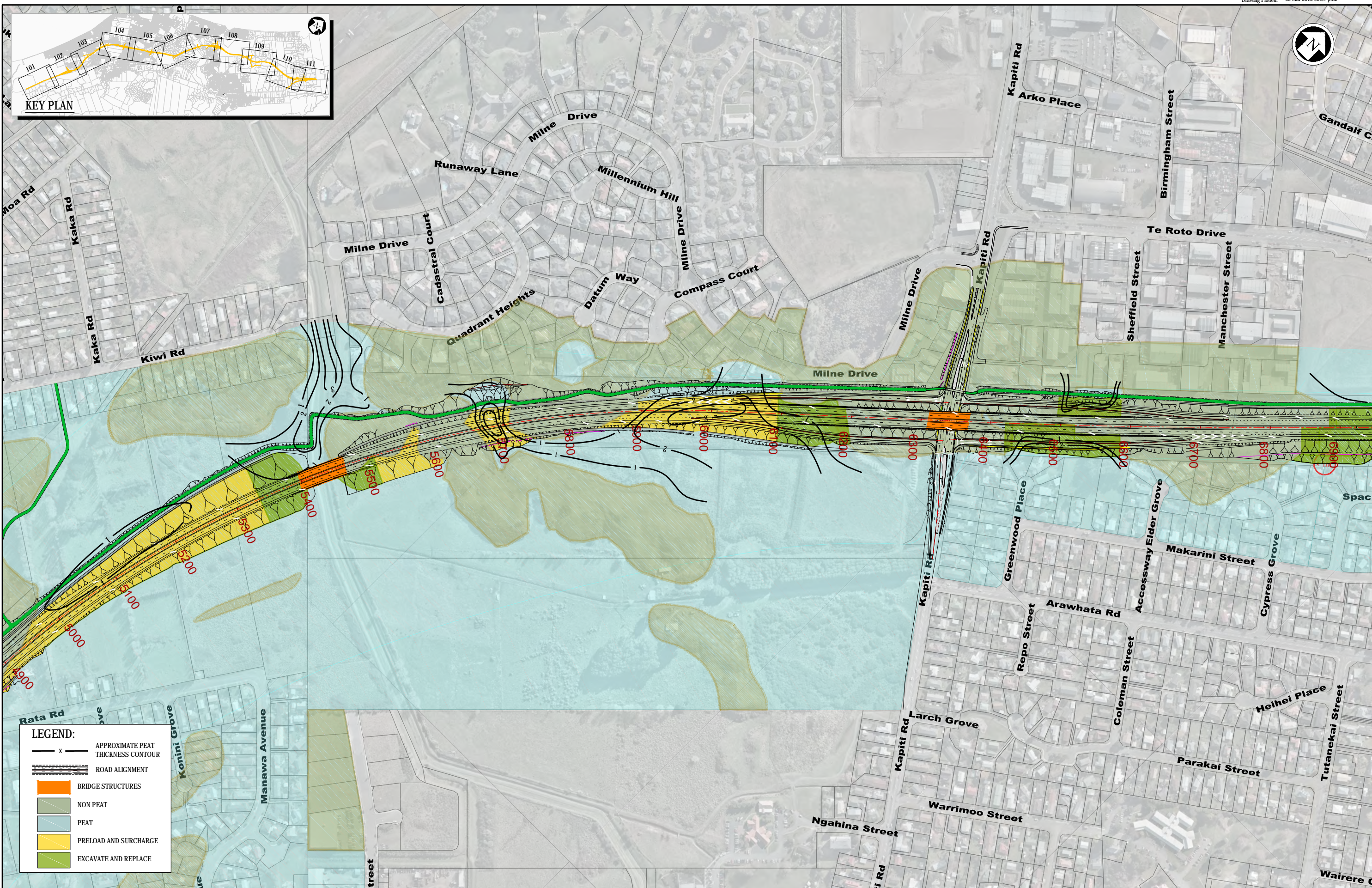
Revision	Amendment	NRN	Approved	Date
1	AEE LODGEMENT	NRN		15.03.12



**Project:** MACKAYS TO PEKA PEKA EXPRESSWAY

**Title:** PEAT THICKNESS CONTOURS AND PEAT TREATMENT SHEET 3 OF 11

State:	FOR CONSENTING
Document ID:	M2PP-AEE-DWG
Drawing No:	CV-EW-103
Rev:	1



**LEGEND:**

- APPROXIMATE PEAT THICKNESS CONTOUR
- ROAD ALIGNMENT
- BRIDGE STRUCTURES
- NON PEAT
- PEAT
- PRELOAD AND SURCHARGE
- EXCAVATE AND REPLACE

NOTES:  
 1. PROPOSED PEAT TREATMENT OPTIONS SHOWN. THESE METHODS ARE INTERCHANGEABLE AND MAY VARY FROM OPTION SHOWN.

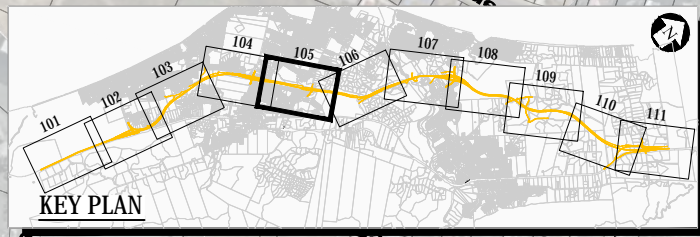
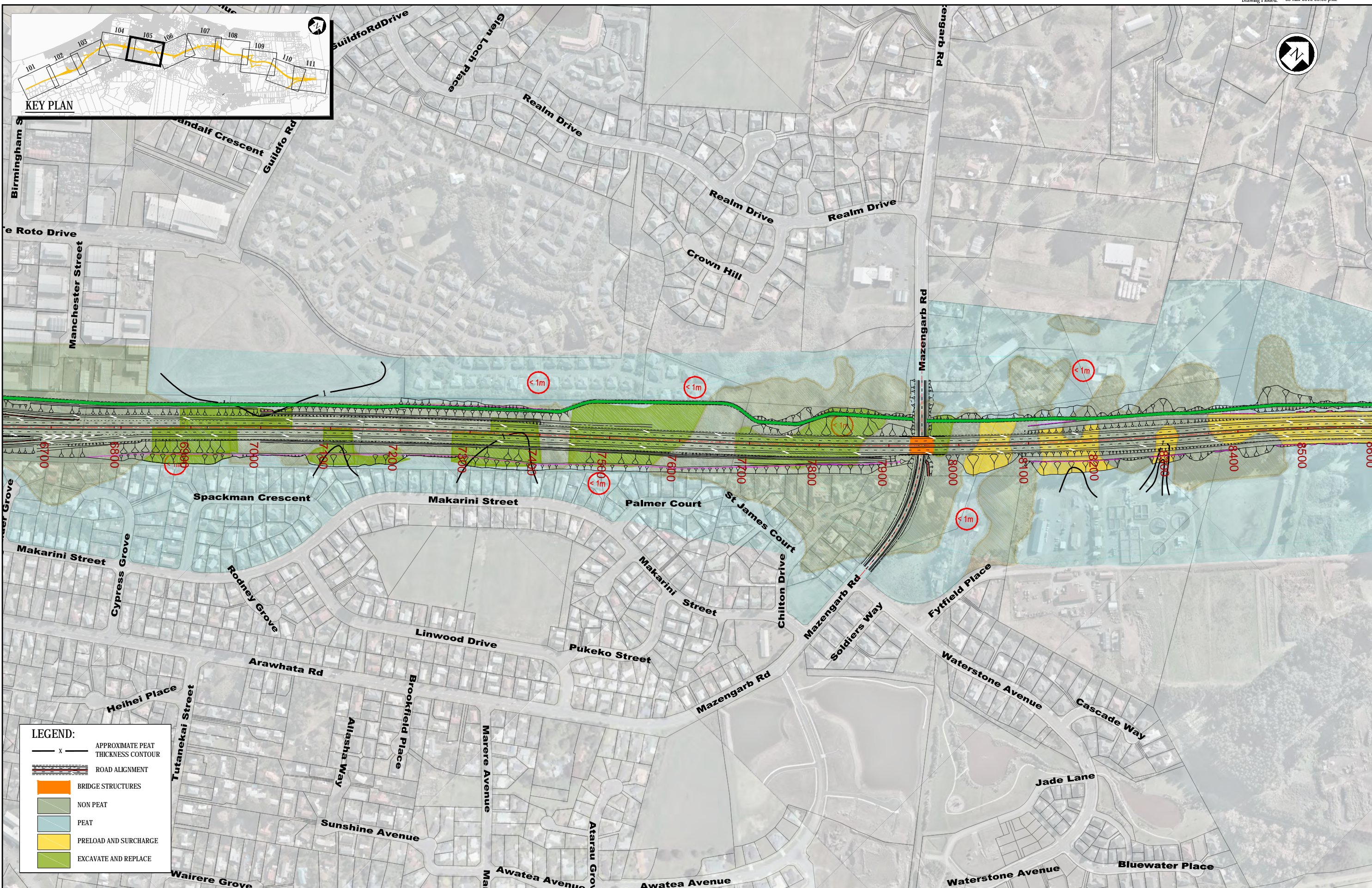
Original Scale (A3)			
1:5000			
1	AEE LODGEMENT	NRN	15.03.12
Revision	Amendment	Approved	Date



Project: **MACKAYS TO PEKA PEKA EXPRESSWAY**

Title: **PEAT THICKNESS CONTOURS AND PEAT TREATMENT SHEET 4 OF 11**

State:	FOR CONSENTING
Document ID:	M2PP-AEE-DWG
Drawing No:	CV-EW-104
Rev:	1



**LEGEND:**

- APPROXIMATE PEAT THICKNESS CONTOUR
- ROAD ALIGNMENT
- BRIDGE STRUCTURES
- NON PEAT
- PEAT
- PRELOAD AND SURCHARGE
- EXCAVATE AND REPLACE

NOTES:  
 1. PROPOSED PEAT TREATMENT OPTIONS SHOWN. THESE METHODS ARE INTERCHANGEABLE AND MAY VARY FROM OPTION SHOWN.

Original Scale (A3)			
1:5000			
1	AEE LODGEMENT	NRN	15.03.12
Revision	Amendment	Approved	Date

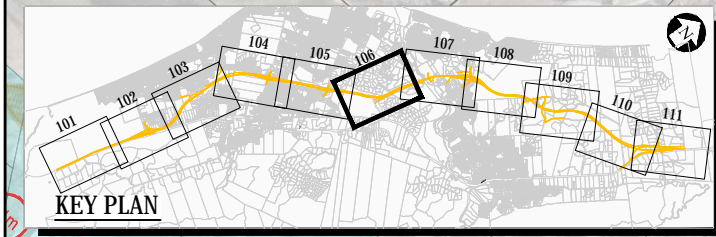
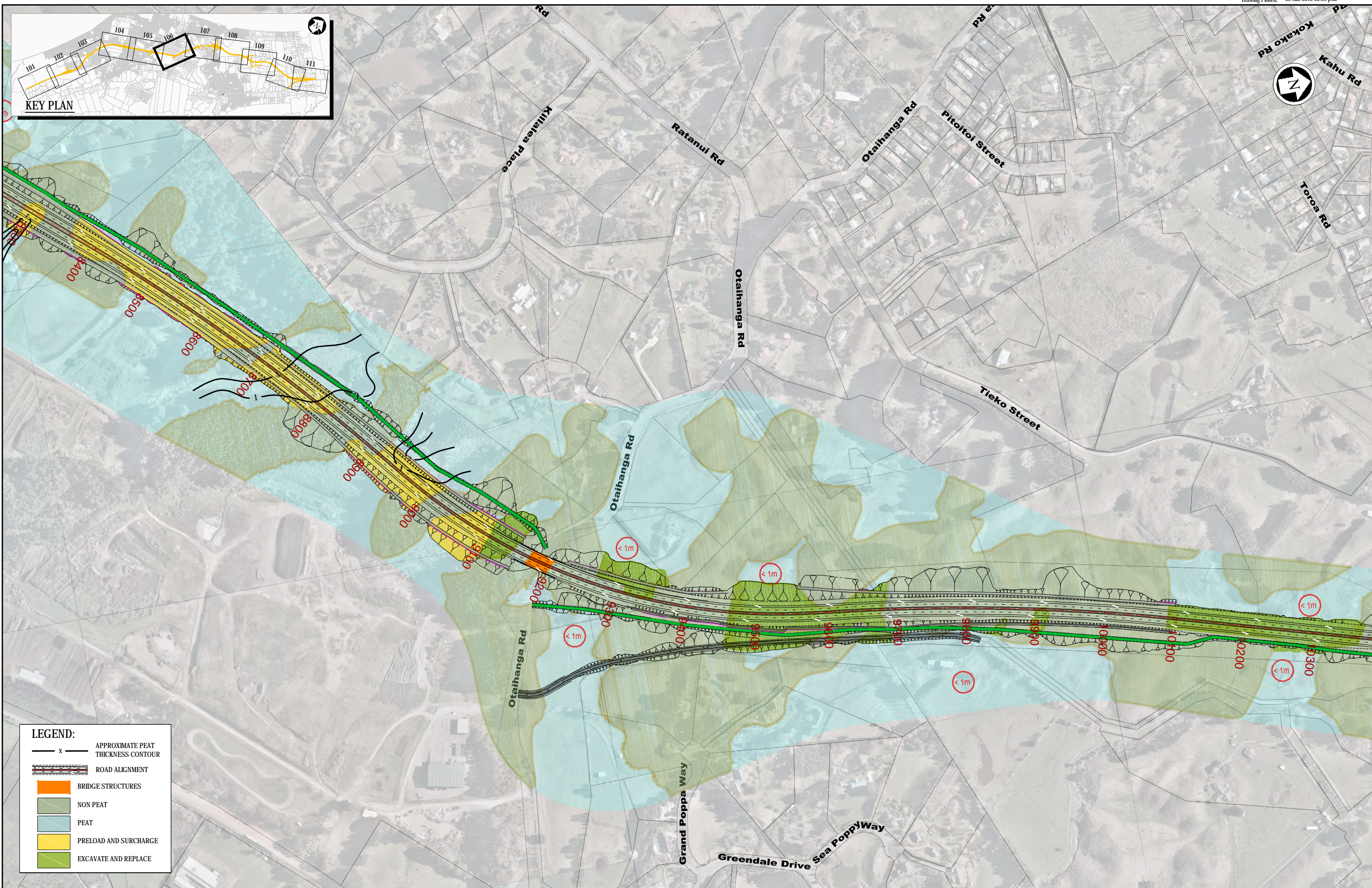


**MACKAYS TO PEKA PEKA EXPRESSWAY**

FOR CONSENTING

Document ID: M2PP-AEE-DWG  
 Drawing No: CV-EW-105

Rev. 1



**LEGEND:**

	APPROXIMATE PEAT THICKNESS CONTOUR
	ROAD ALIGNMENT
	BRIDGE STRUCTURES
	NON PEAT
	PEAT
	PRELOAD AND SURCHARGE
	EXCAVATE AND REPLACE

NOTES:  
 1. PROPOSED PEAT TREATMENT OPTIONS SHOWN. THESE METHODS ARE INTERCHANGEABLE AND MAY VARY FROM OPTION SHOWN.

Original Scale (A3)  
 1:5000

1	AEE LODGEMENT	NRN	15.03.12
Revision	Amendment	Approved	Date



Project: **MACKAYS TO PEKA PEKA EXPRESSWAY**

Title: **PEAT THICKNESS CONTOURS AND PEAT TREATMENT SHEET 6 OF 11**

State:	FOR CONSENTING
Document ID:	M2PP-AEE-DWG
Drawing No:	<b>CV-EW-106</b>
Rev:	<b>1</b>