

— Character Area Boundary

≈≈≈≈≈ Approximate Expressway Alignment

View south



View from Raumatī Escarpment

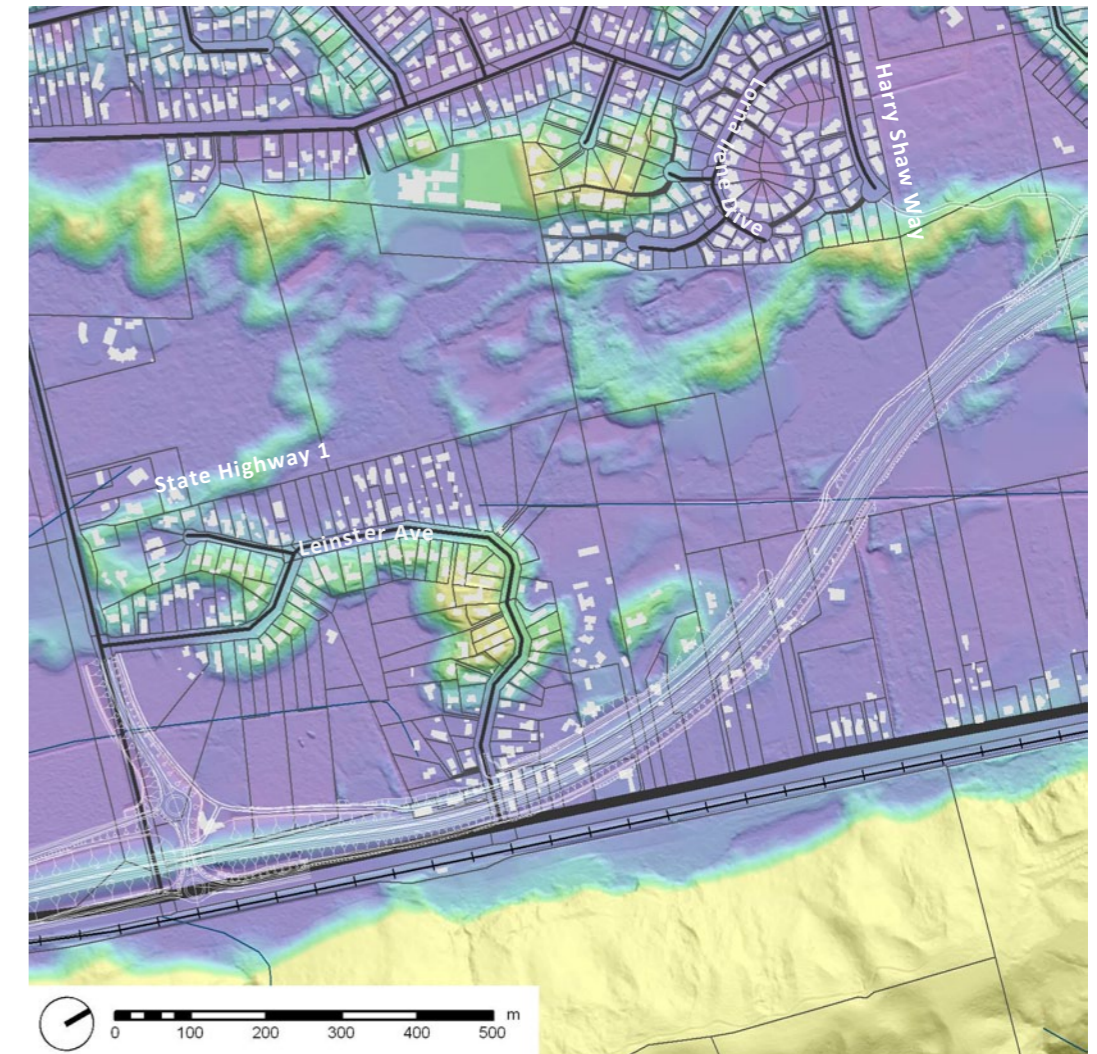
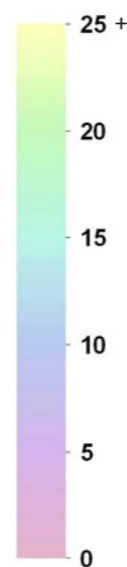
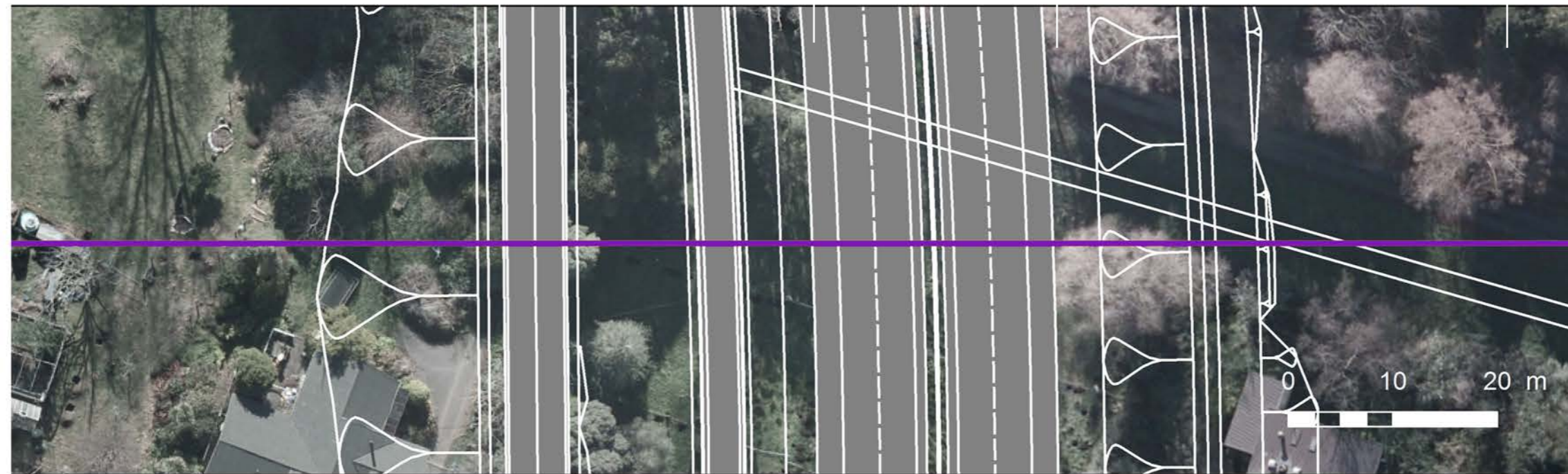
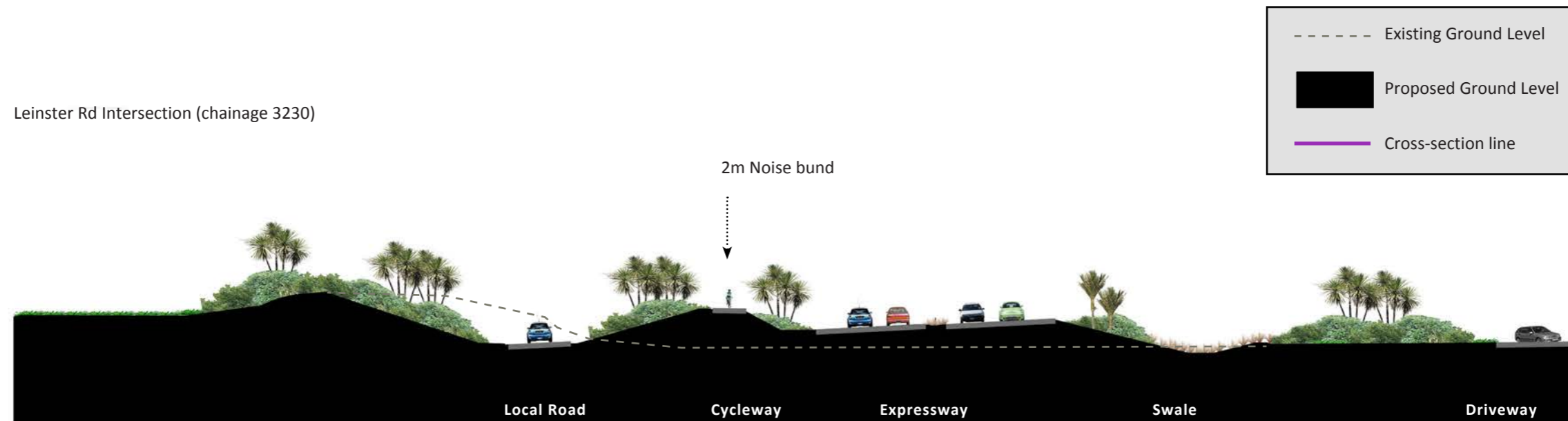


FIGURE 18 RAUMATĪ SOUTH LANDSCAPE CHARACTER DESCRIPTION

Leinster Rd Intersection (chainage 3230)





View south



View south

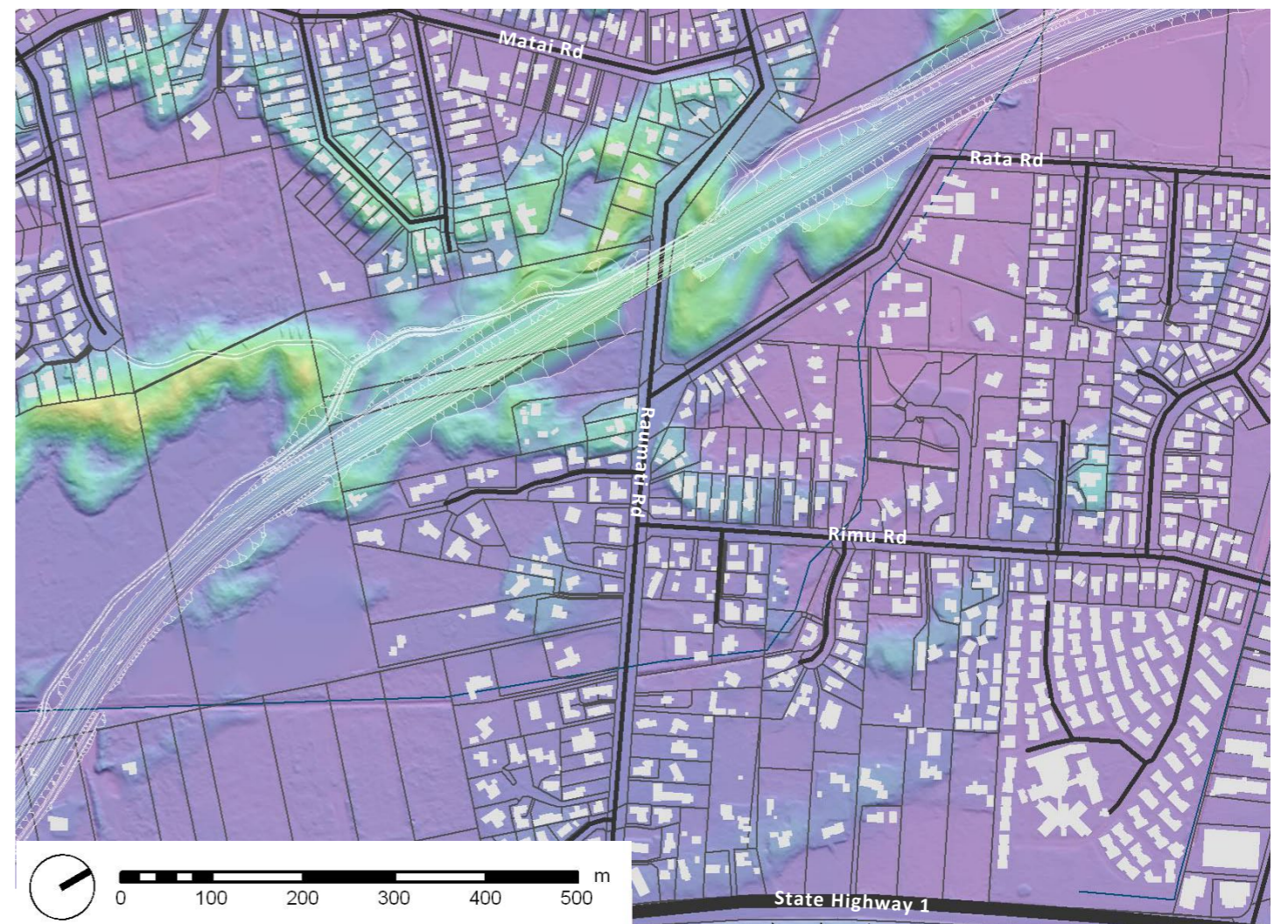
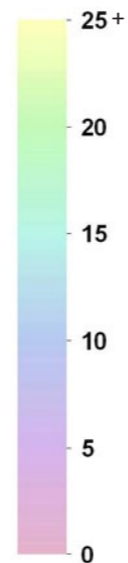
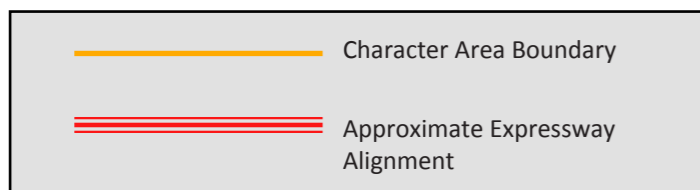


FIGURE 20 RAUMATI ROAD LANDSCAPE CHARACTER DESCRIPTION



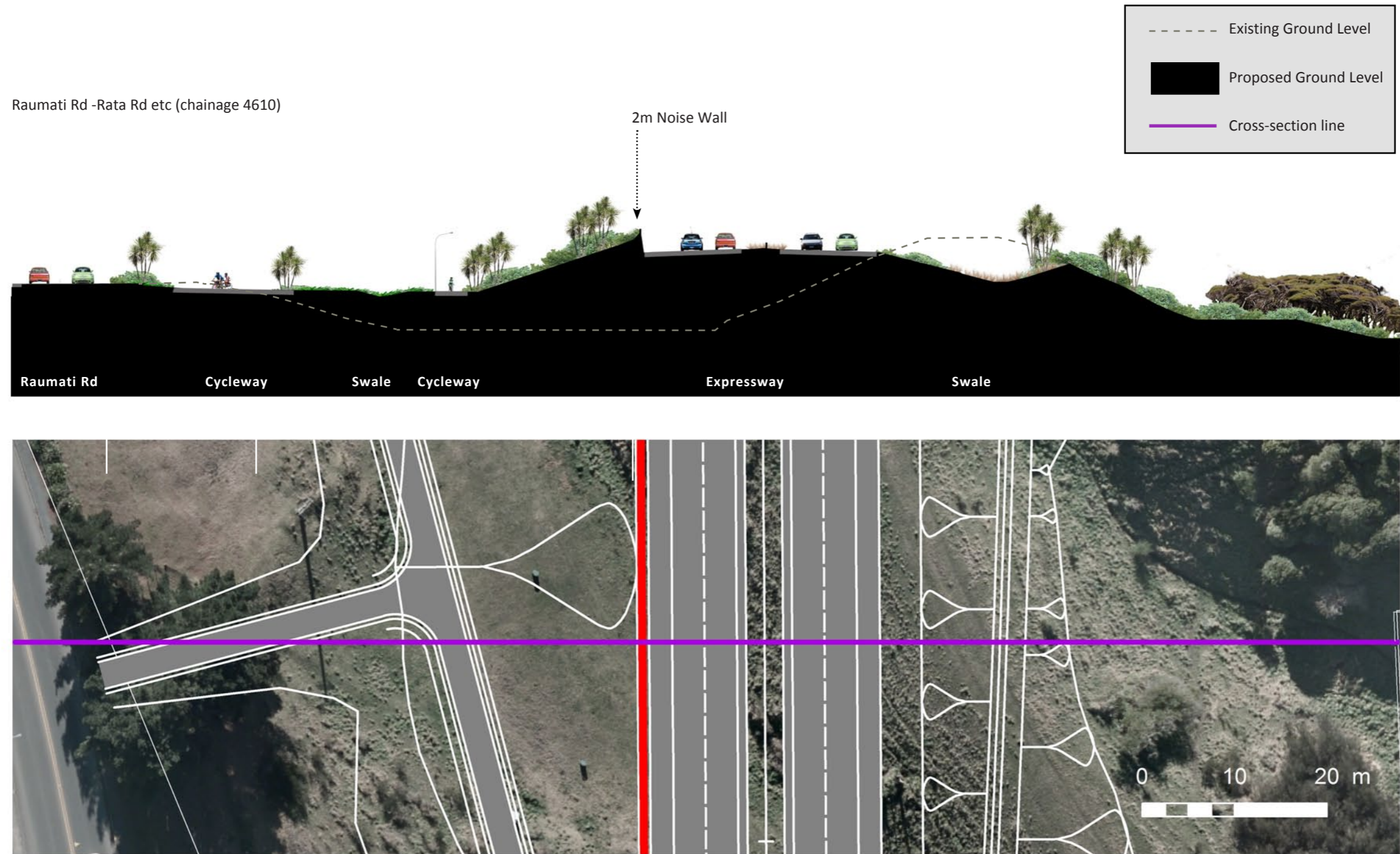
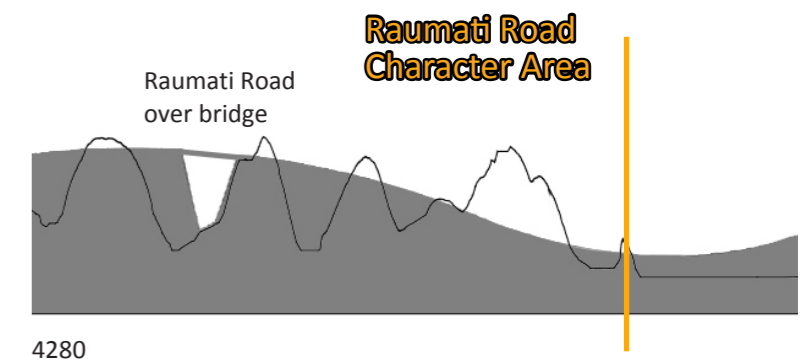
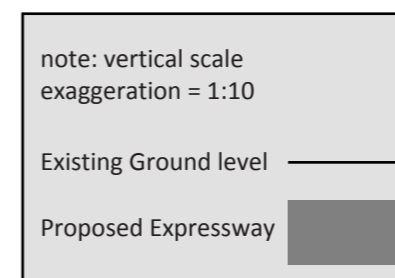
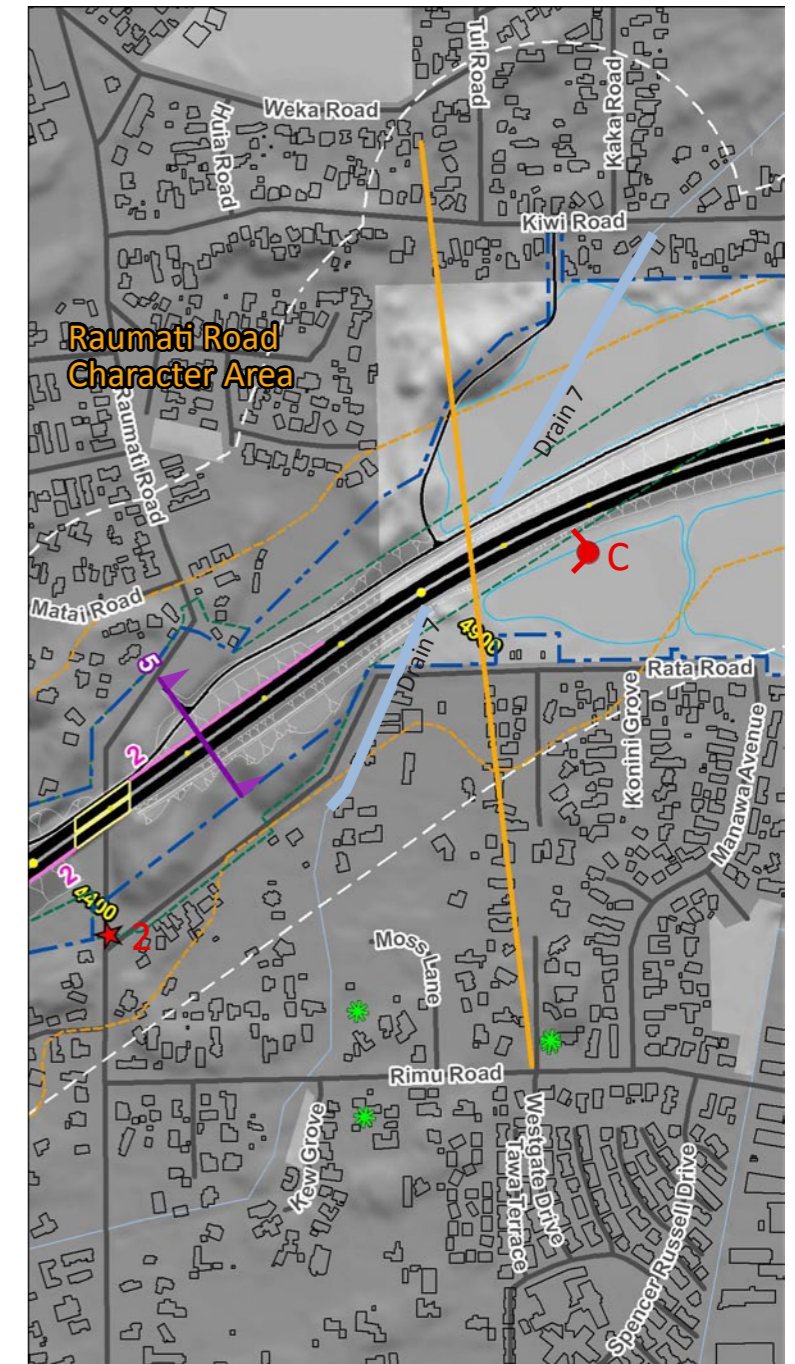


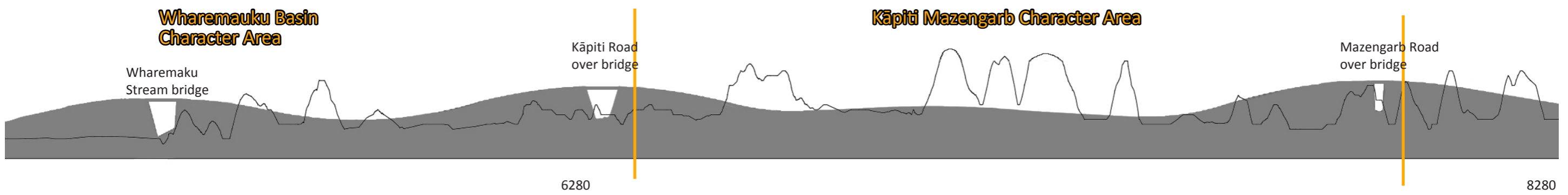
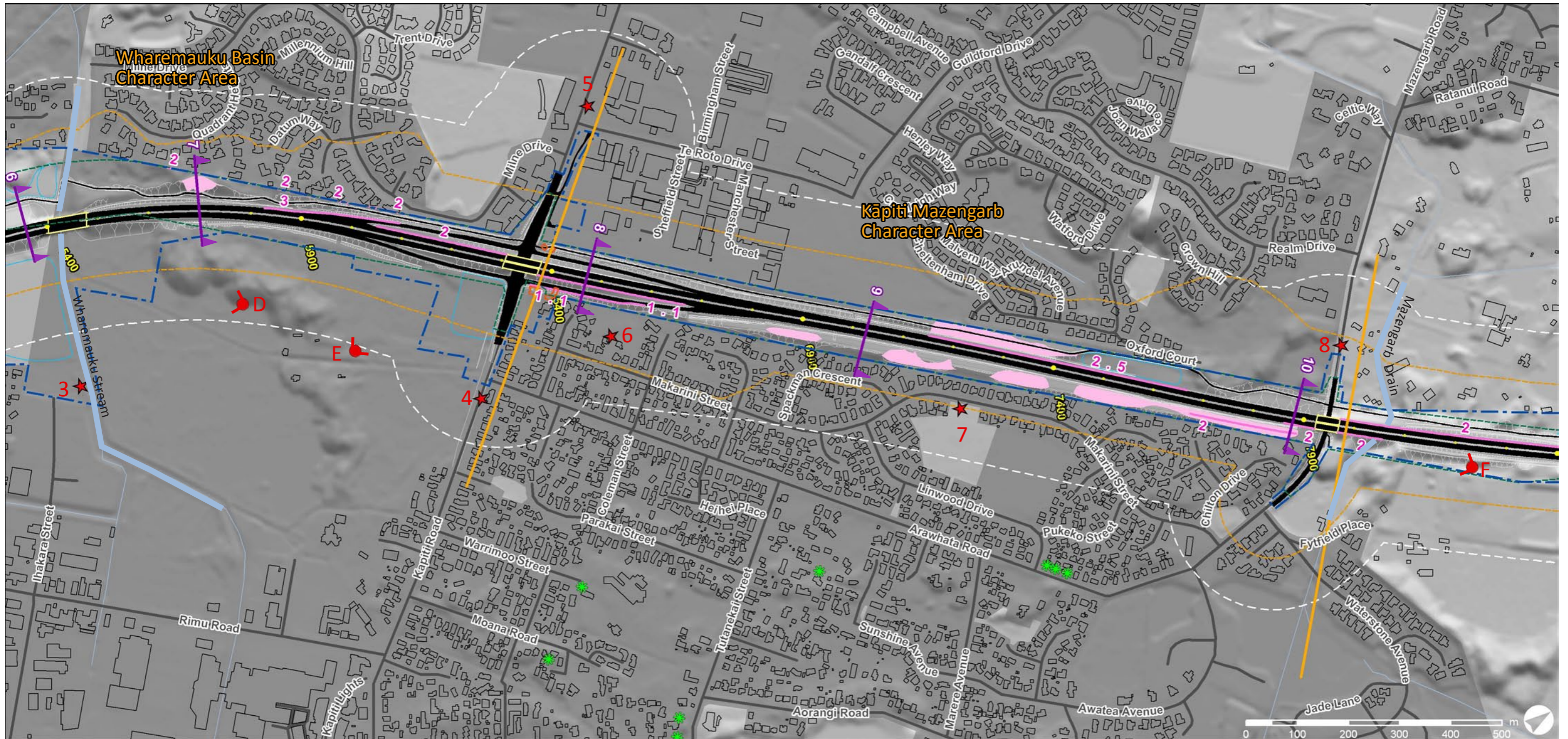
FIGURE 22 CROSS-SECTION 5

LANDSCAPE AND VISUAL ASSESSMENT BY CHARACTER AREA
SECTOR TWO - BETWEEN CHAINAGE 4500 AND 8300



Cross section 6	Figure 29	Appendix A
Cross section 7	Figure 30	Appendix A
Cross section 8	Figure 32	Appendix A
Cross section 9	Figure 33	Appendix A
Cross section 10	Figure 34	Appendix A
Aerial Oblique D	Figure 25	Appendix A
Aerial Oblique E	Figure 26	Appendix A
Aerial Oblique F	Figure 27	Appendix A
Visual Simulation 3	Figure 3	Appendix B
Visual Simulation 4	Figure 4	Appendix B
Visual Simulation 5	Figure 5	Appendix B
Visual Simulation 6	Figure 6	Appendix B
Visual Simulation 7	Figure 7	Appendix B
Visual Simulation 8	Figure 8	Appendix B





ZTV Analysis

The theoretical visibility analysis used “target” points at every 10m along the Expressway, offset 15m each side of the centre line and at a height of 3m above the ground surface. The yellow areas on the diagrams show locations from where the target points can theoretically **not be seen**. It can be thought of as an area in shadow of the line of sight from the target point.

This analysis is based on the LiDAR data including the land(terrain) and above ground features (vegetation and buildings). Further detail about the ZTV analysis can be found in the Methodology section of the report.

KEY

- Target Point
- Locations from where the target points can not be seen.

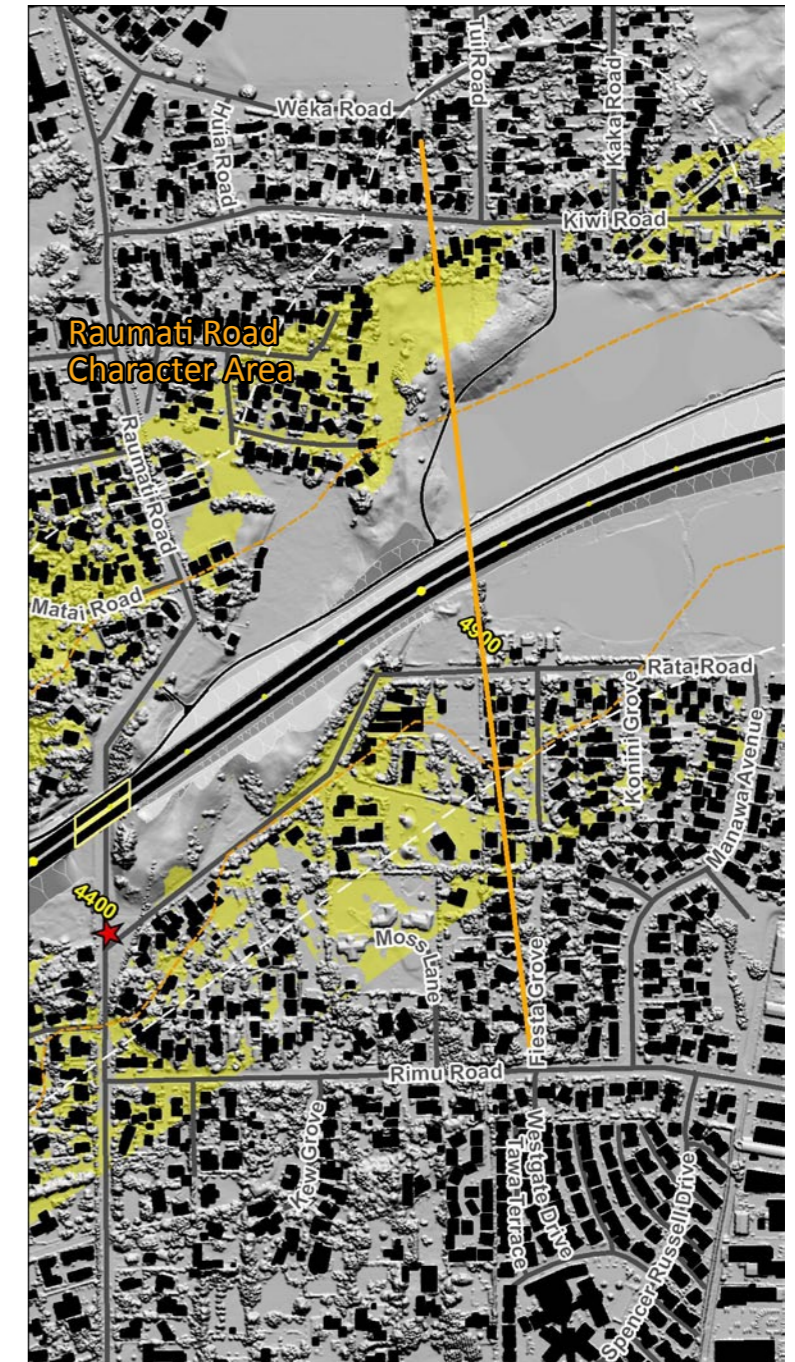
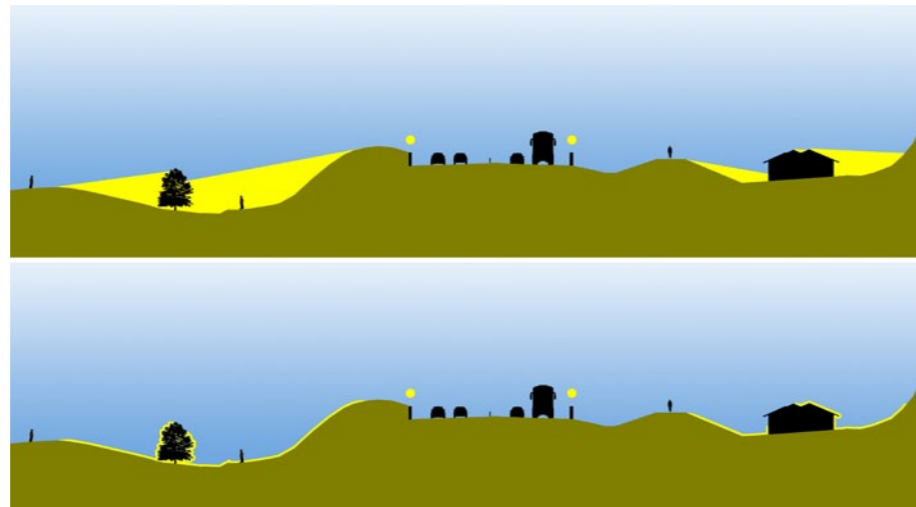


FIGURE 24 SECTOR TWO ZTV 300M EXTENT





FIGURE 25 AERIAL OBLIQUE D WHAREMAUKU STREAM

THIS PAGE HAS BEEN DELIBERATELY LEFT BLANK



FIGURE 26 KĀPITI ROAD AERIAL OBLIQUE E



- (A) Wetland stormwater area
- (B) Traffic signals
- (C) Dense planting on embankment
- (D) Open grassed areas
- (E) Shared cycle / walking path
- (F) Upright native trees
- (G) Noise barrier



FIGURE 27 AERIAL OBLIQUE F MAZENGARB ROAD



View south-west



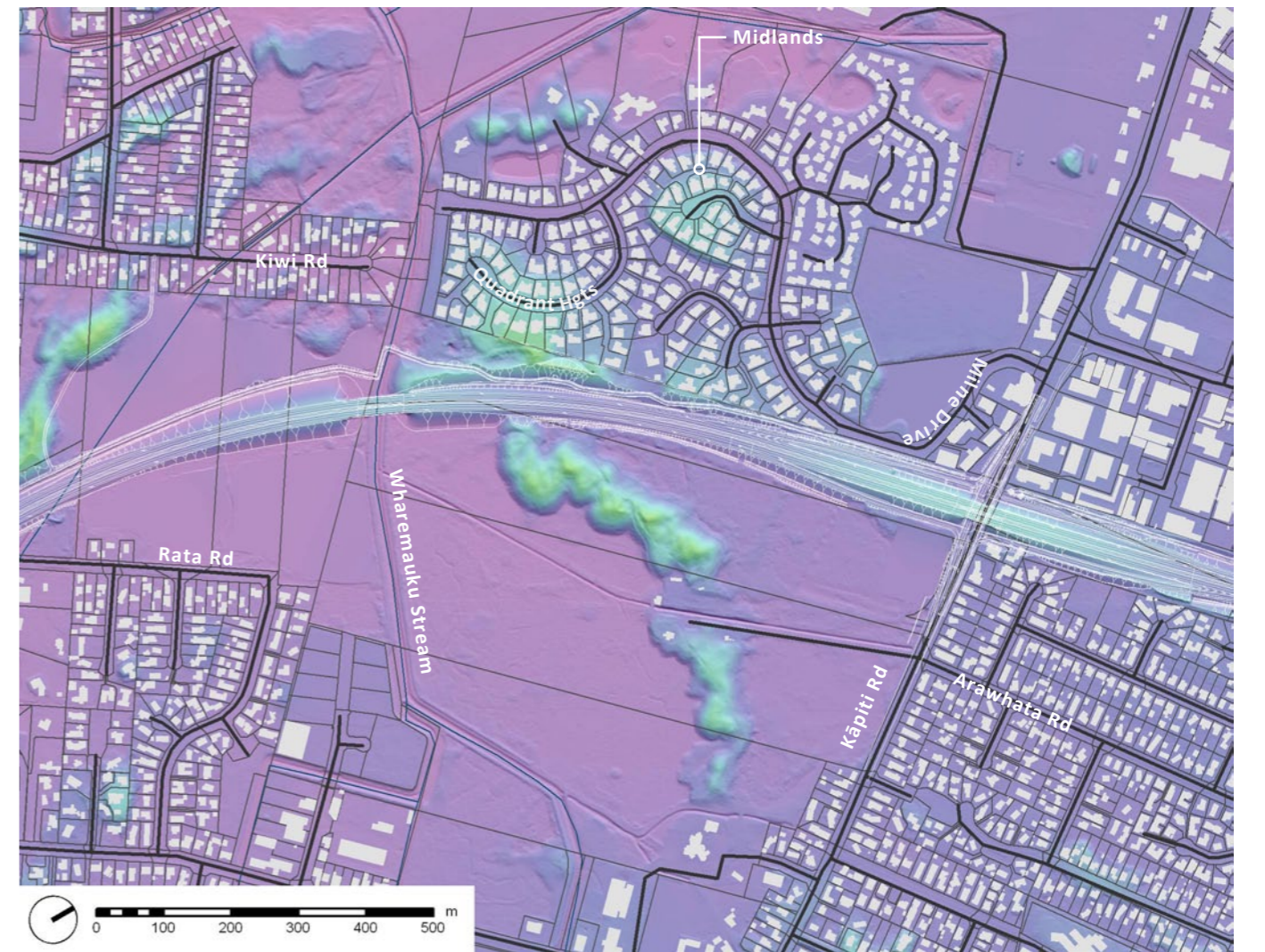
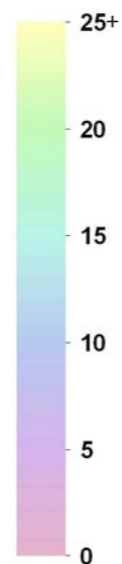
View west



View south

Legend:

- Character Area Boundary (Yellow line)
- Approximate Expressway Alignment (Red double line)



South of Ihakara St (chainage 5340)

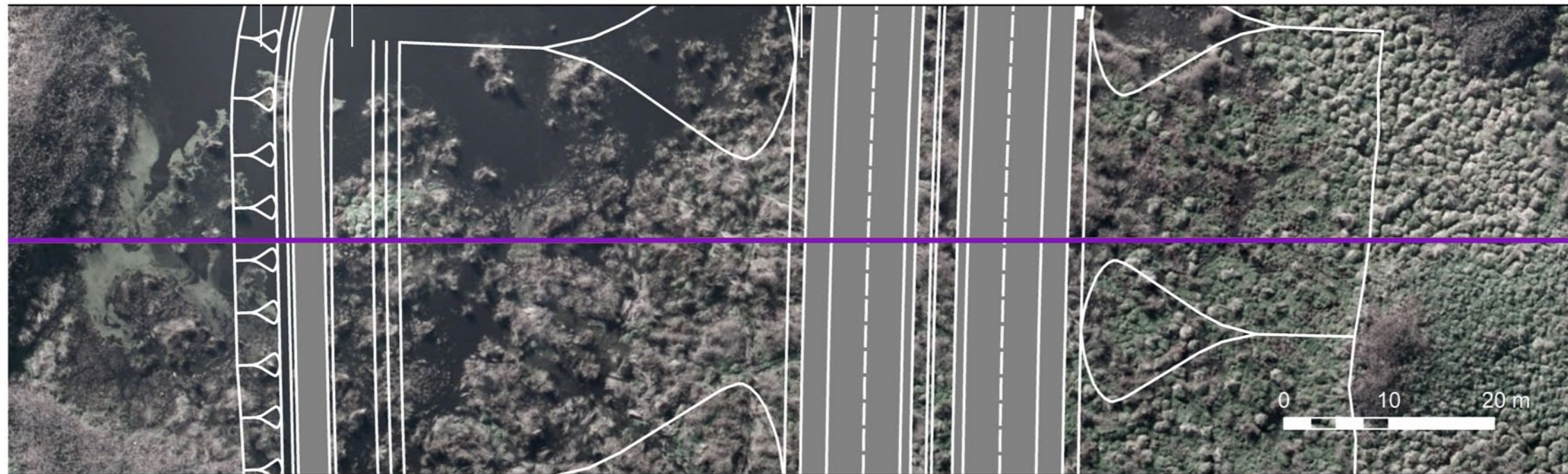
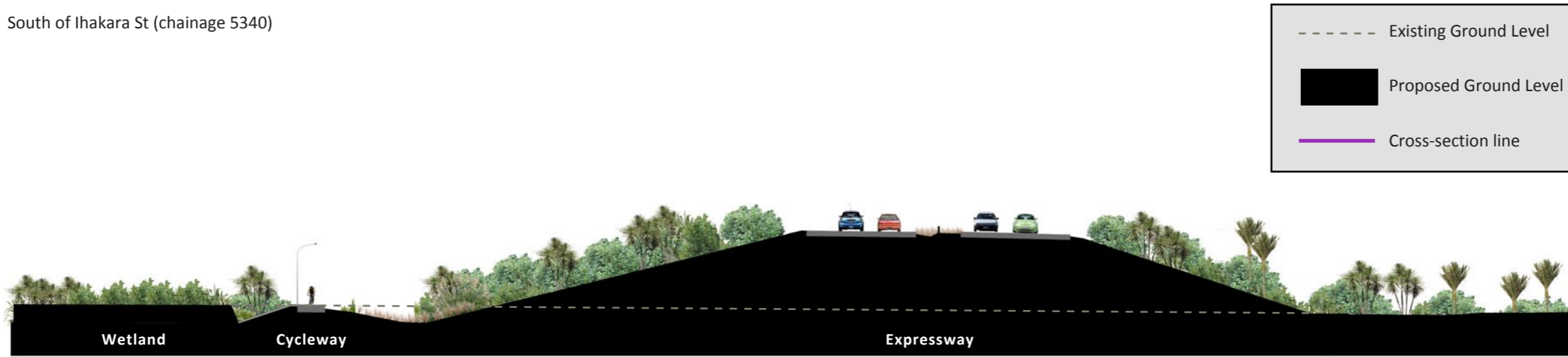
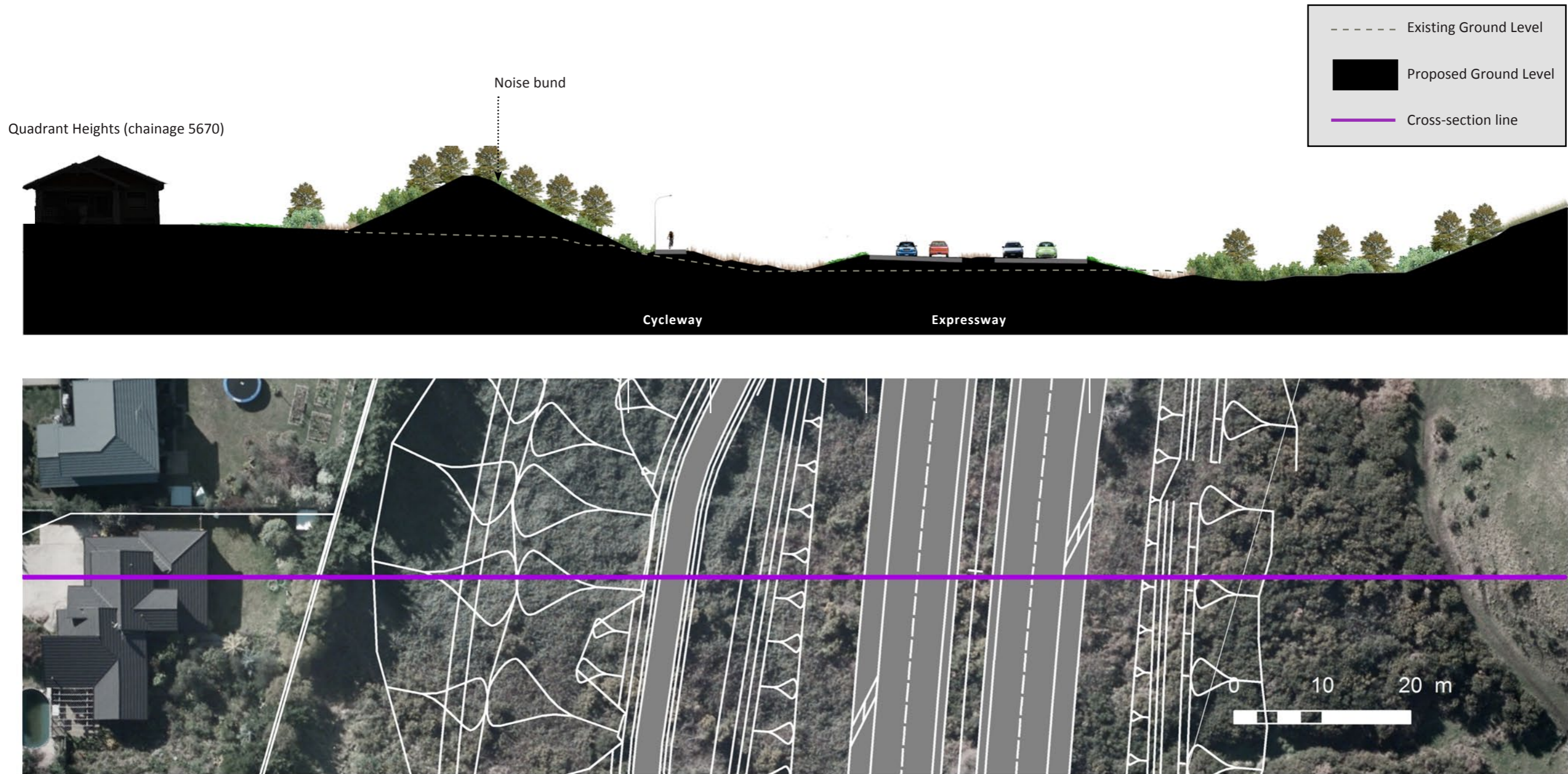


FIGURE 29 CROSS-SECTION 6

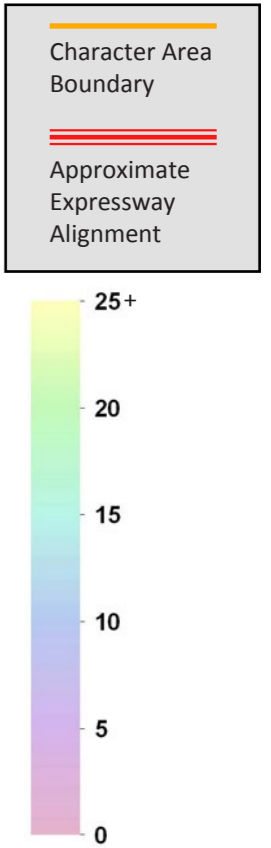




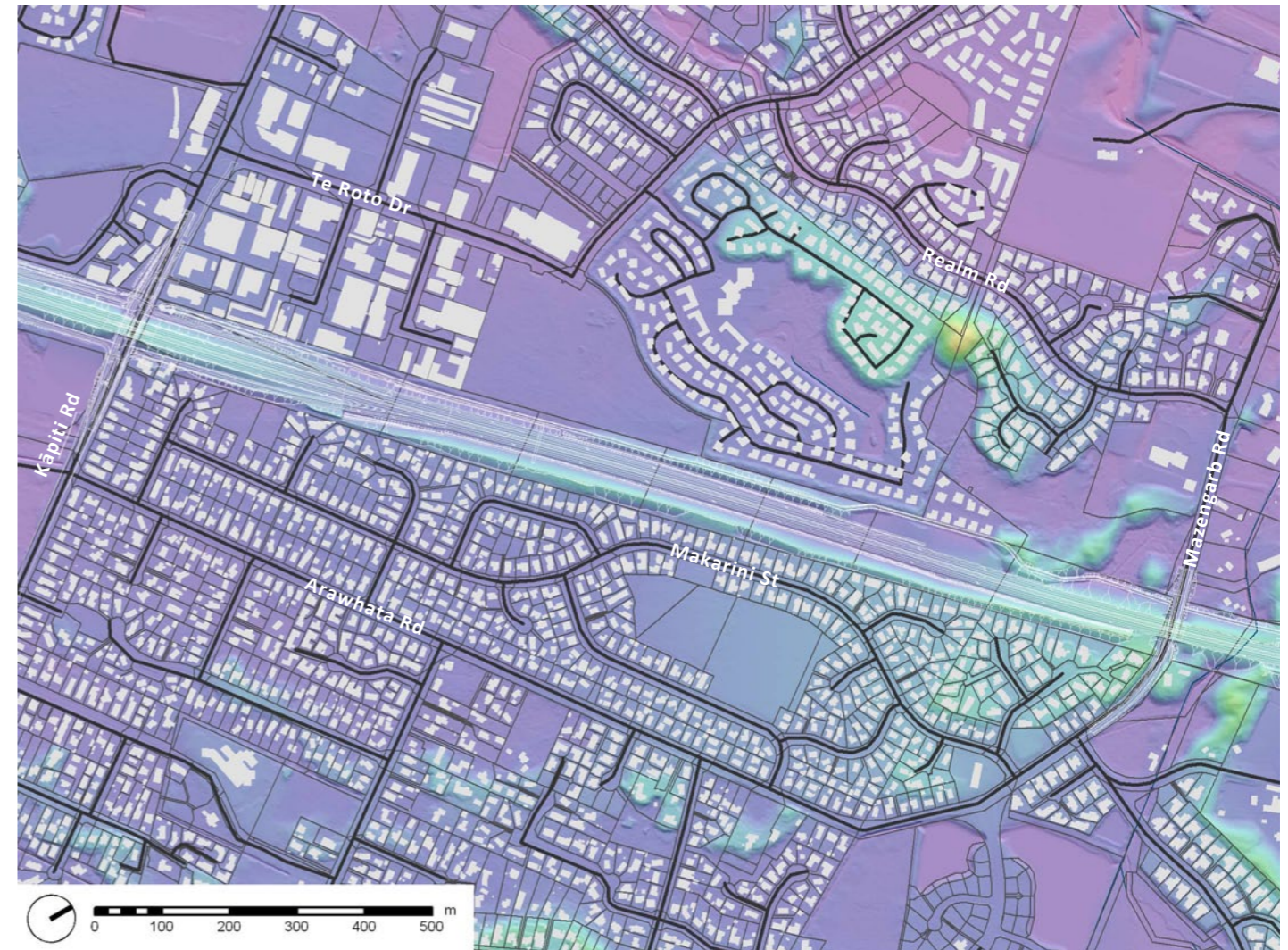
View west



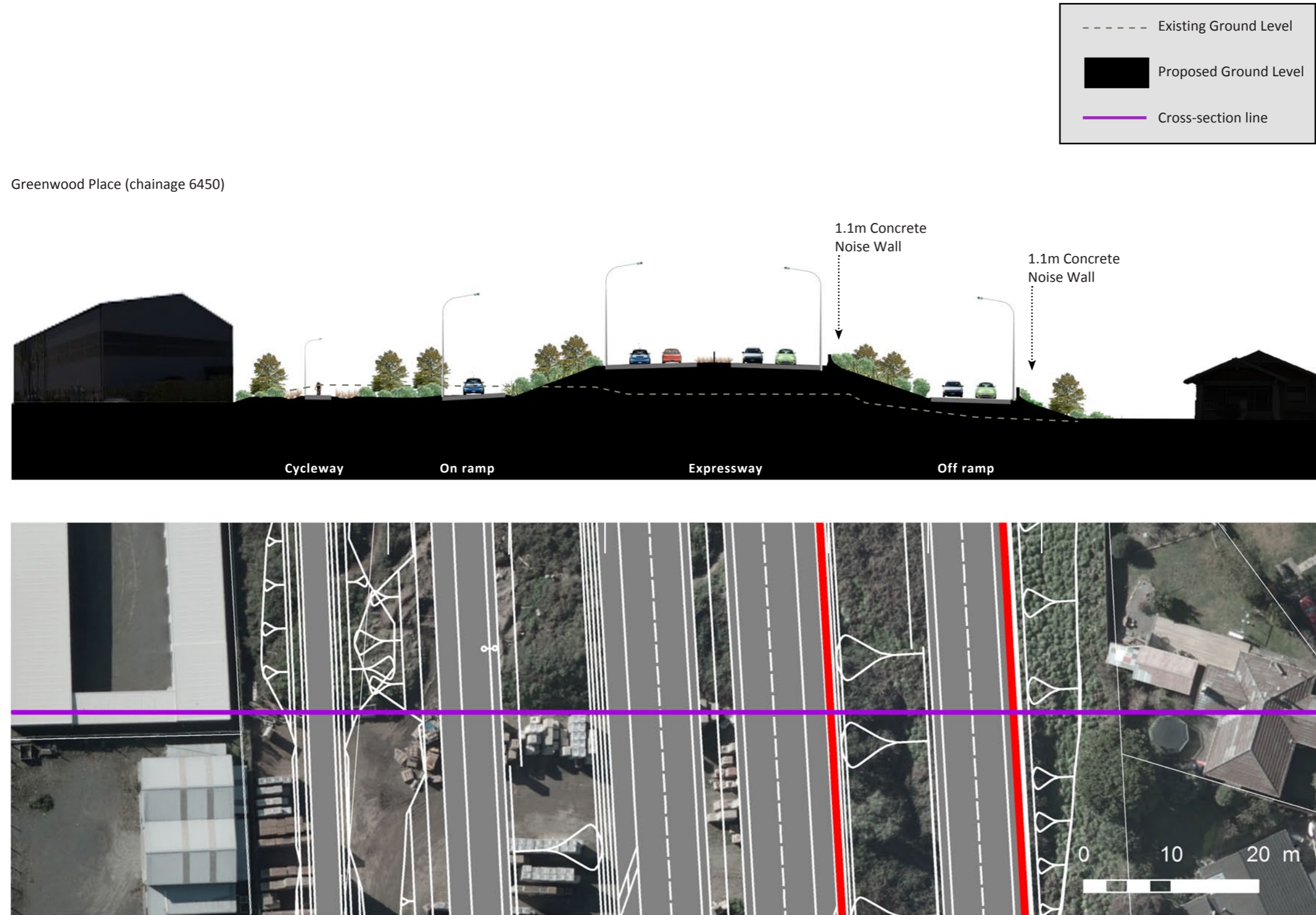
View south-west



View west



Greenwood Place (chainage 6450)



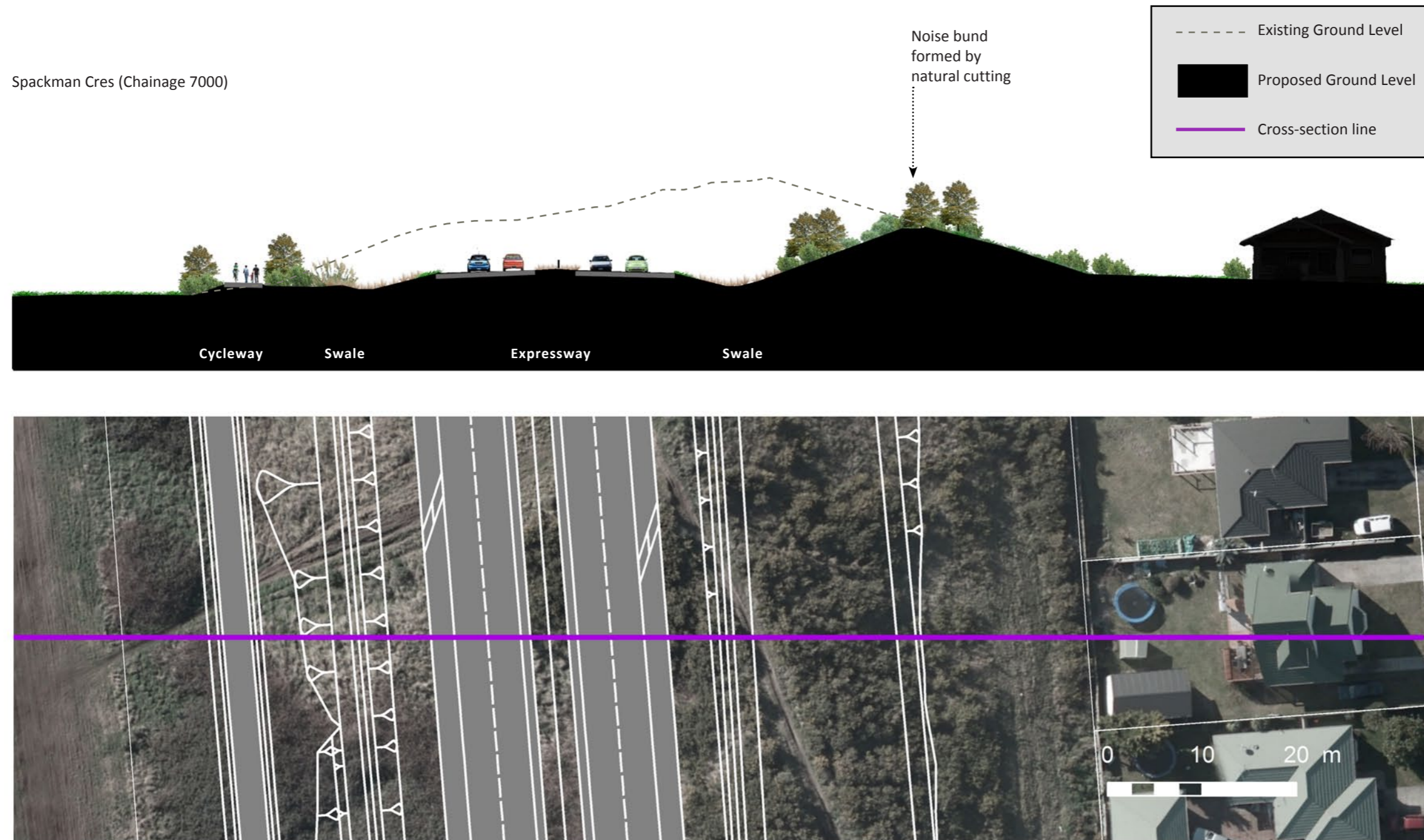
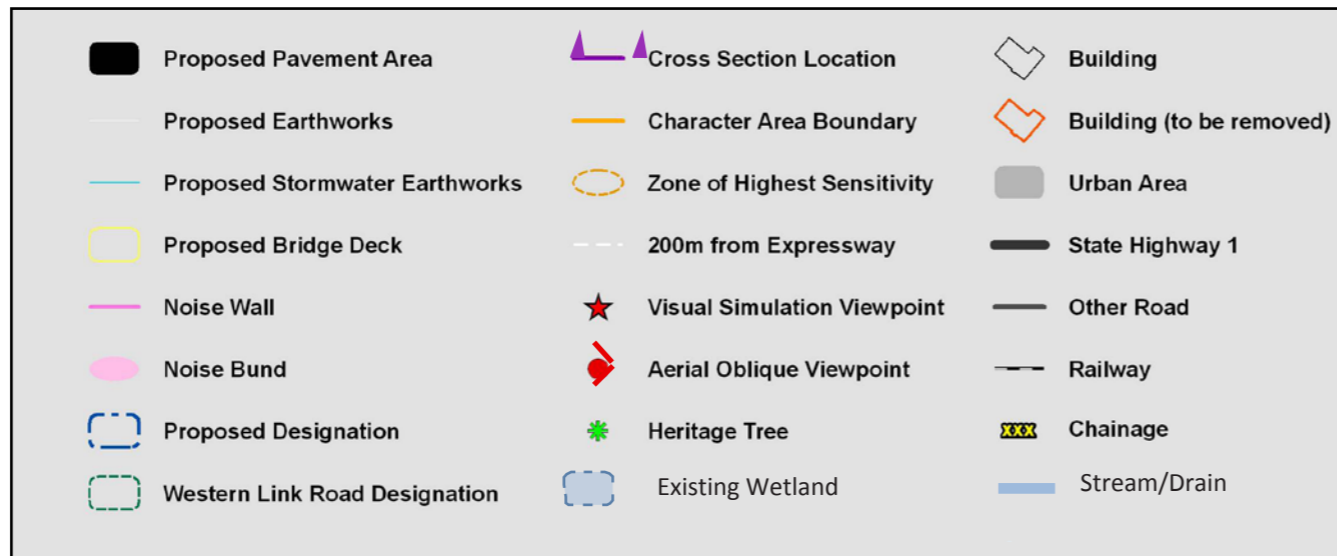


FIGURE 33 CROSS-SECTION 9

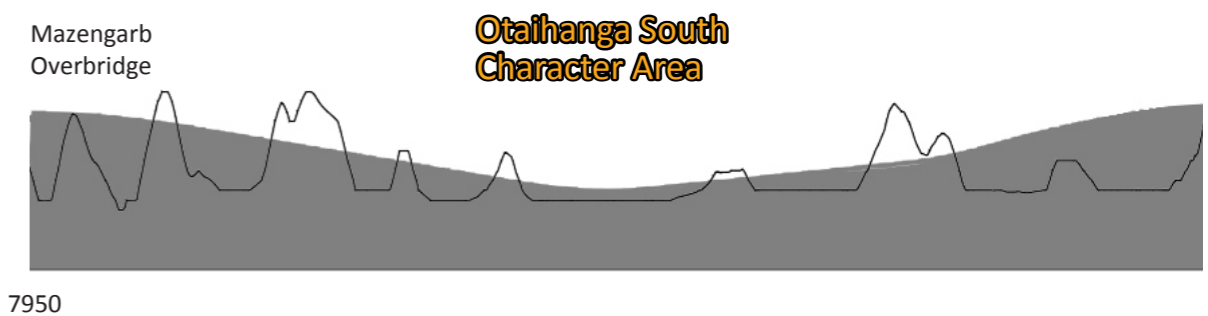
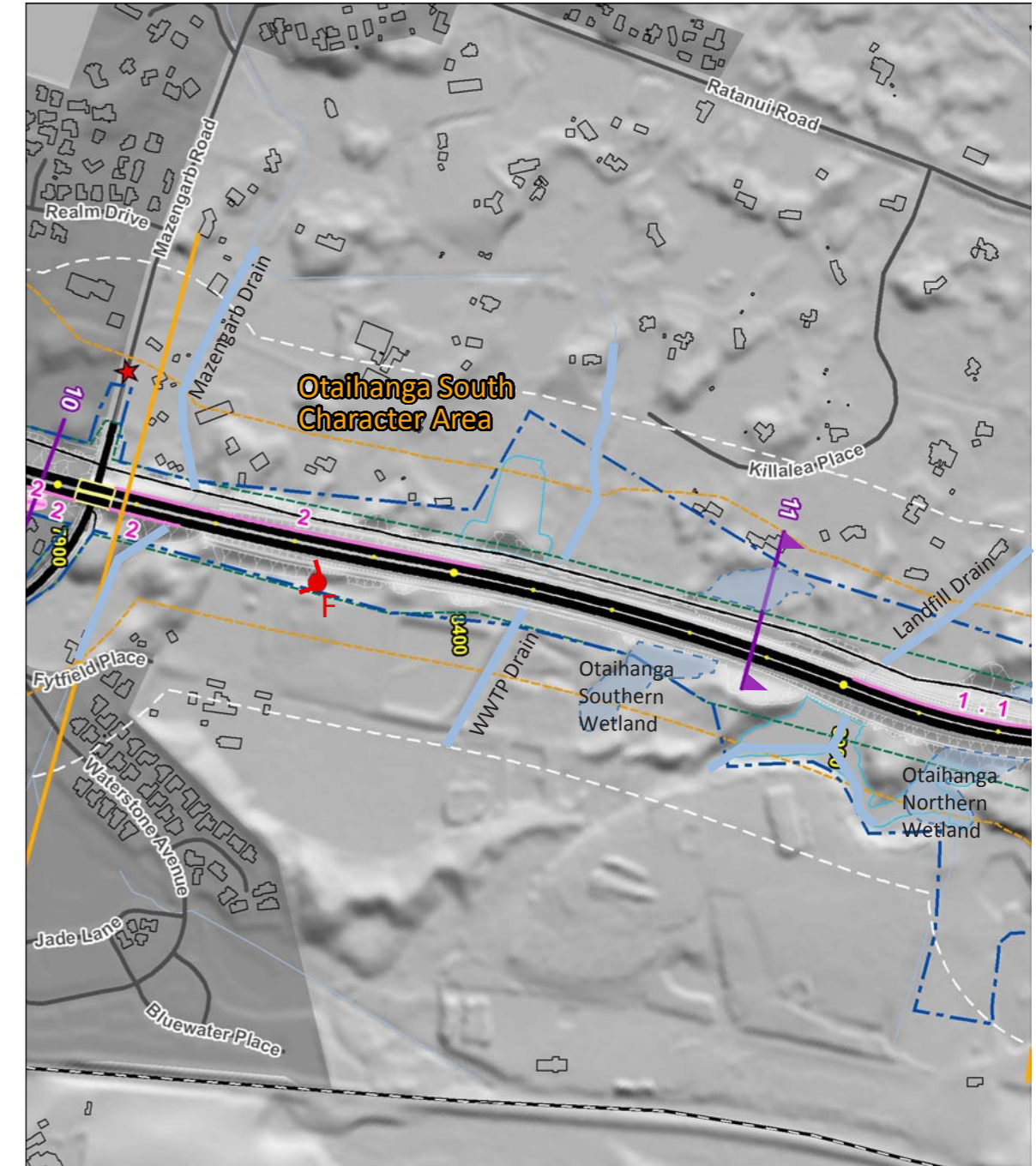
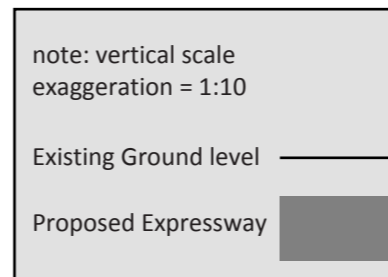


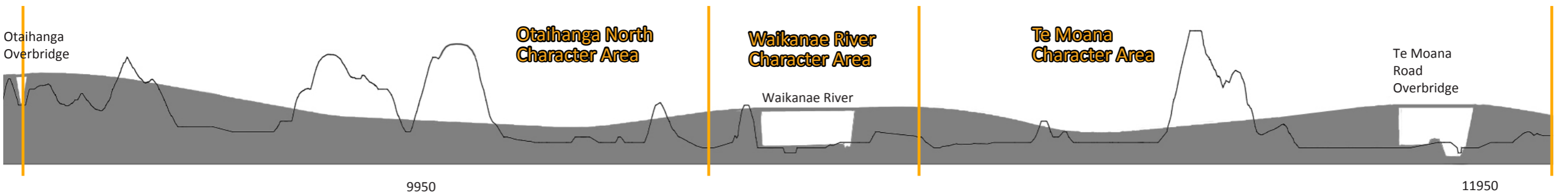
LANDSCAPE AND VISUAL ASSESSMENT BY CHARACTER AREA

SECTOR THREE - BETWEEN CHAINAGE 8300 AND 12400



Cross section 11	Figure 41	Appendix A
Cross section 12	Figure 43	Appendix A
Cross section 13	Figure 45	Appendix A
Cross section 14	Figure 47	Appendix A
Cross section 15	Figure 48	Appendix A
Aerial Oblique G	Figure 37	Appendix A
Aerial Oblique H	Figure 38	Appendix A
Aerial Oblique I	Figure 39	Appendix A
Visual Simulation 9	Figure 9	Appendix B
Visual Simulation 10	Figure 10	Appendix B
Visual Simulation 11	Figure 11	Appendix B
Visual Simulation 12	Figure 12	Appendix B
Visual Simulation 13	Figure 13	Appendix B





ZTV Analysis

The theoretical visibility analysis used “target” points at every 10m along the Expressway, offset 15m each side of the centre line and at a height of 3m above the ground surface. The yellow areas on the diagrams show locations from where the target points can theoretically *not be seen*. It can be thought of as an area in shadow of the line of sight from the target point.

This analysis is based on the LiDAR data including the land(terrain) and above ground features (vegetation and buildings). Further detail about the ZTV analysis can be found in the Methodology section of the report.

KEY

- Target Point
- Locations from where the target points can not be seen.

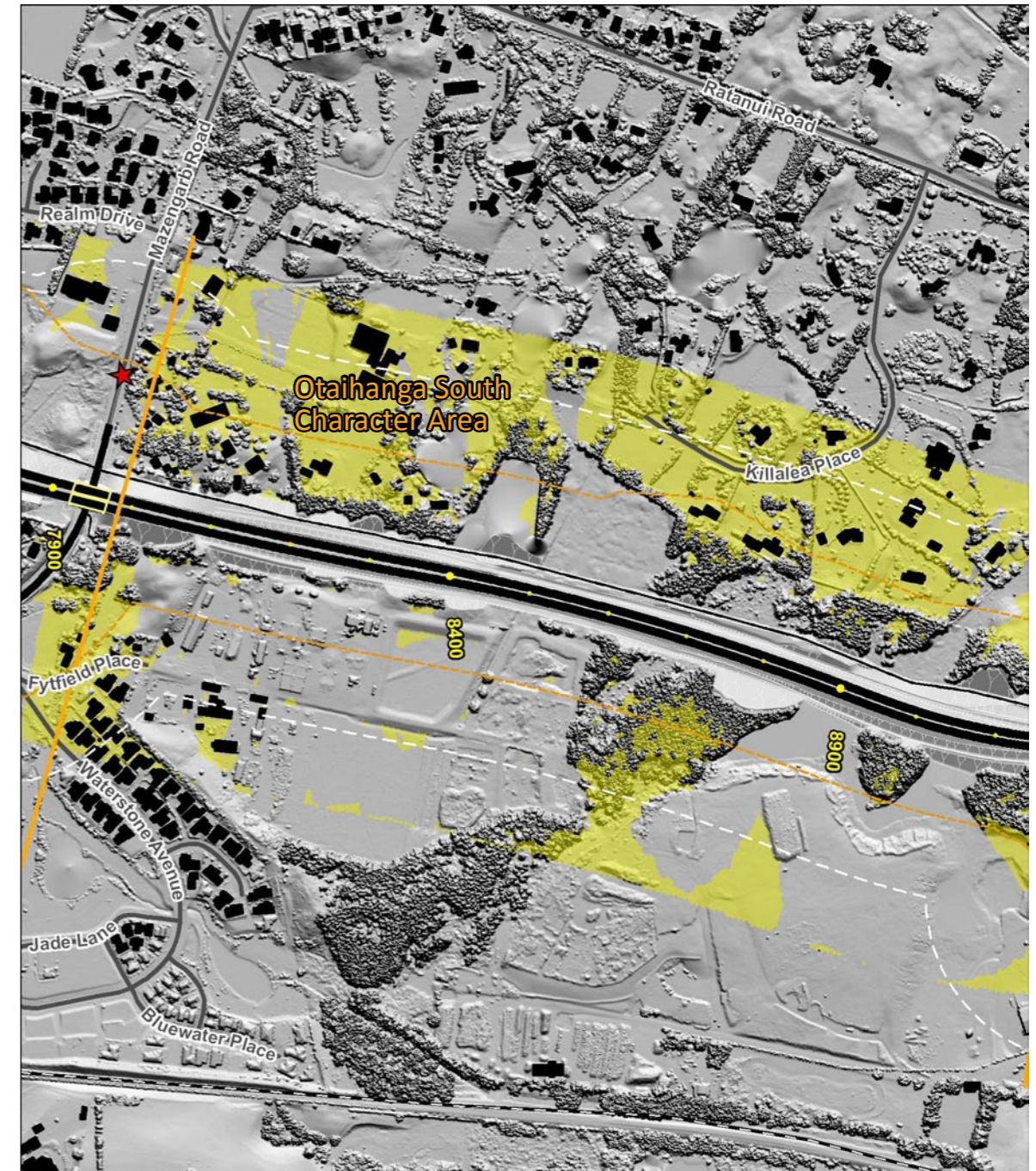
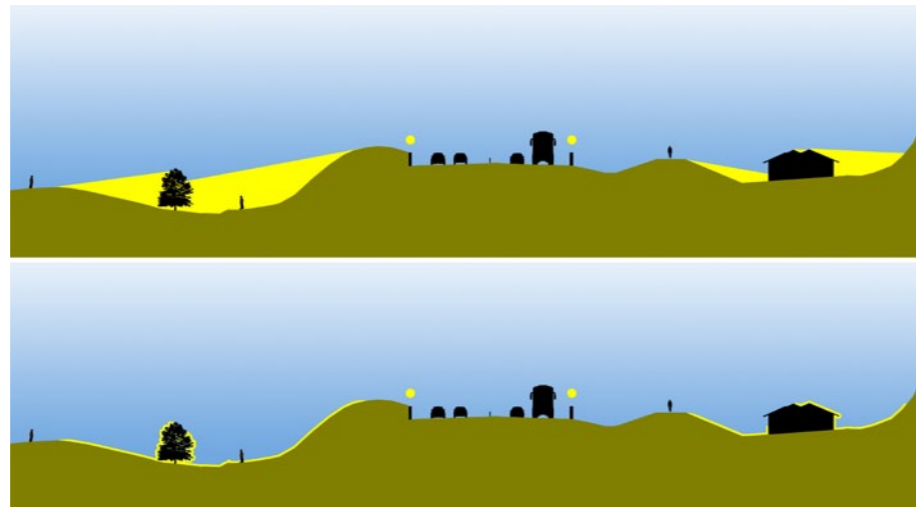


FIGURE 36 SECTOR THREE ZTV 300M EXTENT

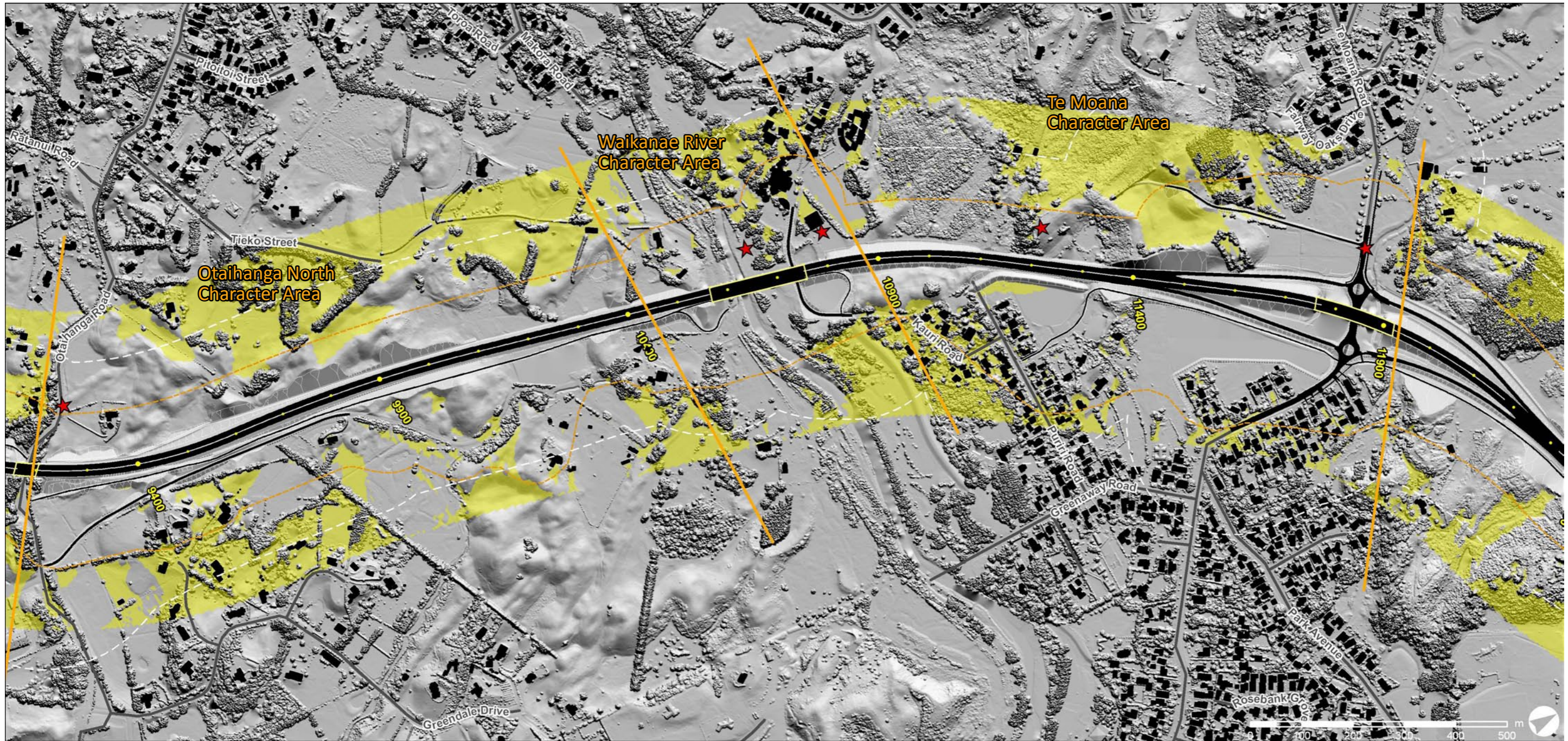




FIGURE 37 AERIAL OBLIQUE G OTAIHANGA ROAD

THIS PAGE HAS BEEN DELIBERATELY LEFT BLANK