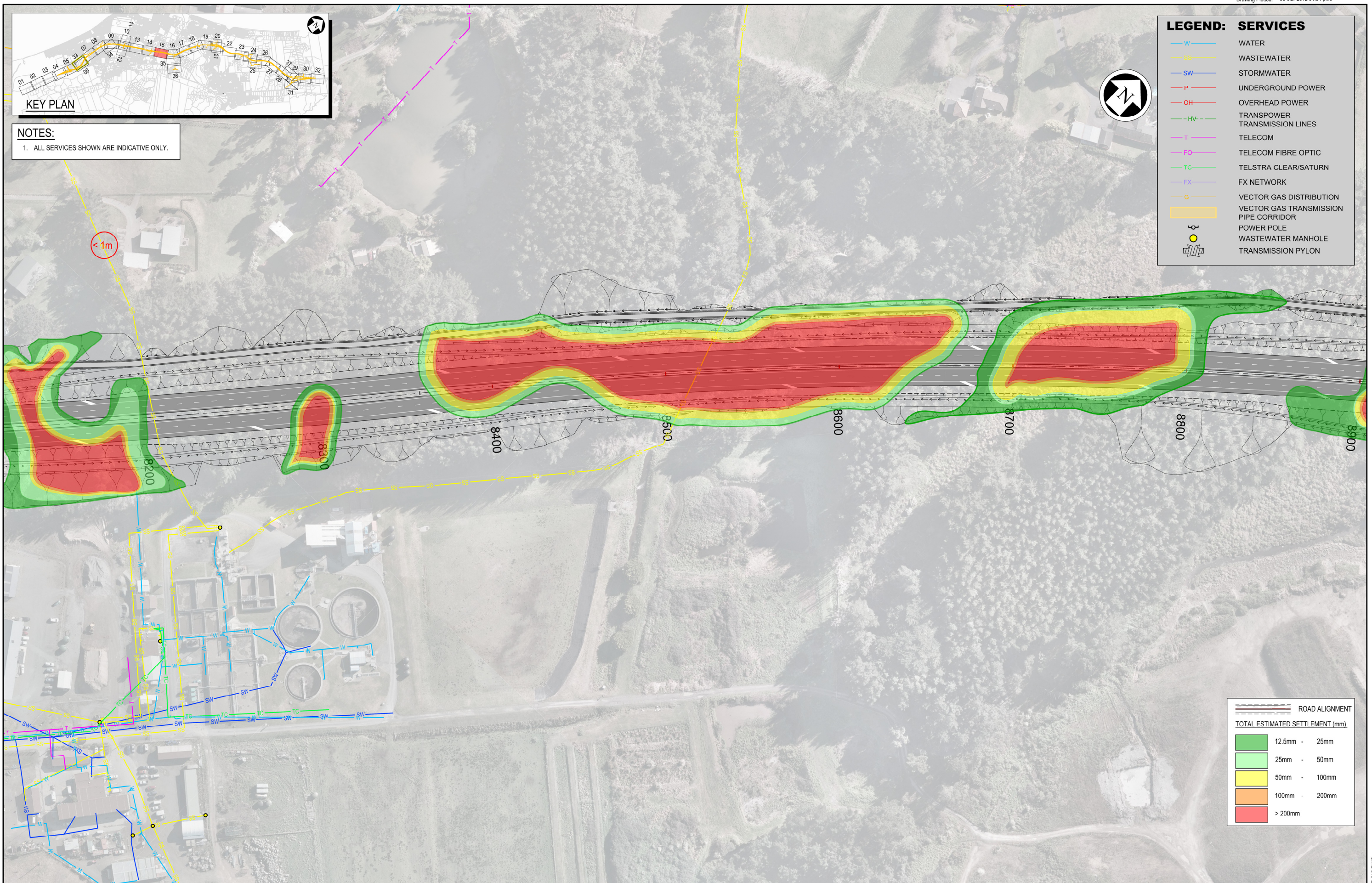




**NOTES:**  
1. ALL SERVICES SHOWN ARE INDICATIVE ONLY.

**LEGEND: SERVICES**

W	WATER
SS	WASTEWATER
SW	STORMWATER
P	UNDERGROUND POWER
OH	OVERHEAD POWER
HV	TRANSPOWER TRANSMISSION LINES
T	TELECOM
FO	TELECOM FIBRE OPTIC
TC	TELSTRA CLEAR/SATURN
FX	FX NETWORK
G	VECTOR GAS DISTRIBUTION
[Yellow Box]	VECTOR GAS TRANSMISSION PIPE CORRIDOR
[Symbol]	POWER POLE
[Symbol]	WASTEWATER MANHOLE
[Symbol]	TRANSMISSION PYLON



**ROAD ALIGNMENT**

**TOTAL ESTIMATED SETTLEMENT (mm)**

[Green Box]	12.5mm - 25mm
[Light Green Box]	25mm - 50mm
[Yellow Box]	50mm - 100mm
[Orange Box]	100mm - 200mm
[Red Box]	> 200mm

NOTES:

Original Scale (A3)	
1:2000	
1 AEE LODGEMENT	NRN 15.03.12
Revision: Amendment	Approved: Date:



**Project: MACKAYS TO PEKA PEKA EXPRESSWAY**

**Title: EXISTING SERVICES SETTLEMENT CONTOURS**

Status: FOR CONSENTING

Document ID: M2PP-AEE-DWG

Drawing No: **GT-SE-215**

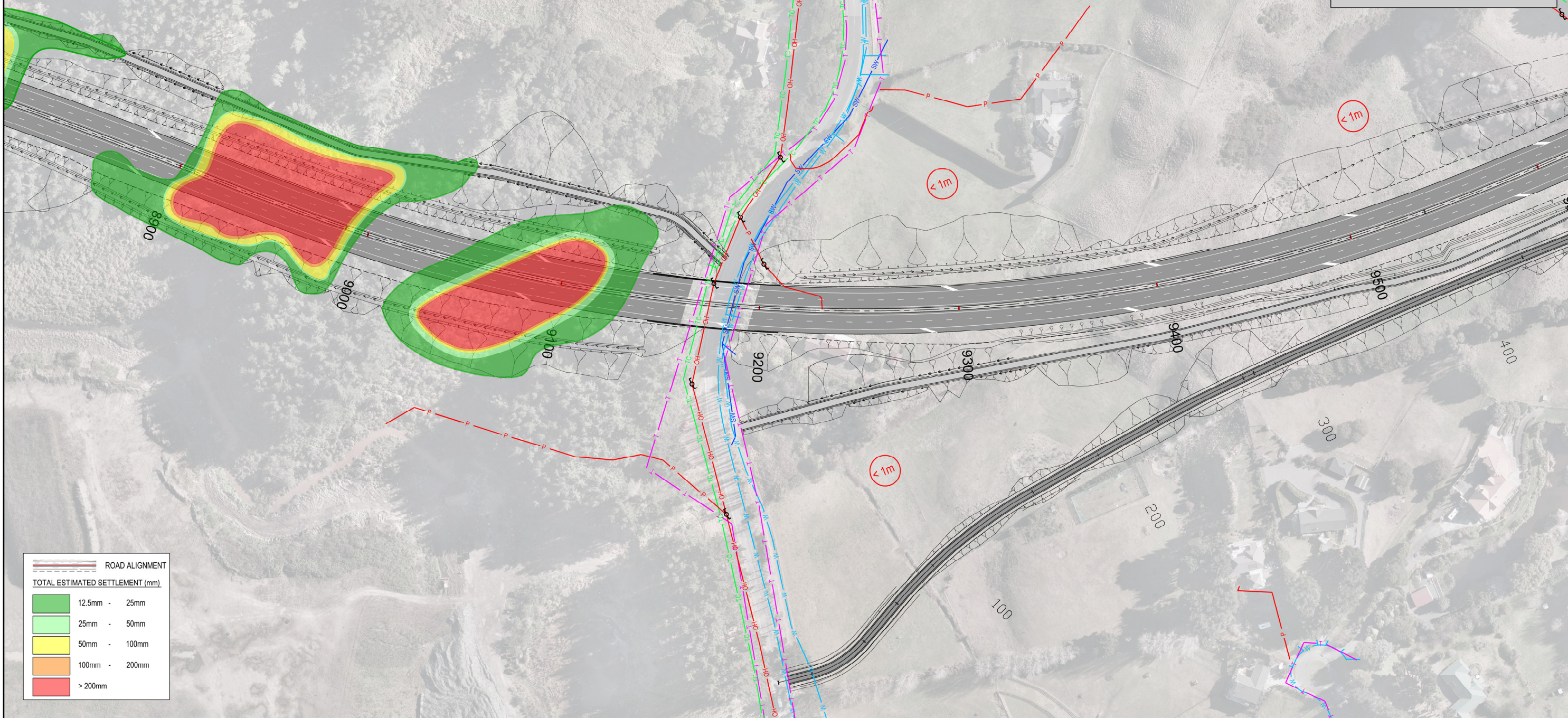
Rev: 1



**NOTES:**  
1. ALL SERVICES SHOWN ARE INDICATIVE ONLY.

**LEGEND: SERVICES**

W	WATER
SS	WASTEWATER
SW	STORMWATER
P	UNDERGROUND POWER
OH	OVERHEAD POWER
HV	TRANSPOWER TRANSMISSION LINES
T	TELECOM
FO	TELECOM FIBRE OPTIC
TC	TELSTRA CLEAR/SATURN
FX	FX NETWORK
G	VECTOR GAS DISTRIBUTION
[Yellow Box]	VECTOR GAS TRANSMISSION PIPE CORRIDOR
[Circle with dot]	POWER POLE
[Circle with cross]	WASTEWATER MANHOLE
[Tall rectangle]	TRANSMISSION PYLON



**ROAD ALIGNMENT**

**TOTAL ESTIMATED SETTLEMENT (mm)**

[Green Box]	12.5mm - 25mm
[Light Green Box]	25mm - 50mm
[Yellow Box]	50mm - 100mm
[Orange Box]	100mm - 200mm
[Red Box]	> 200mm

NOTES:

Original Scale (A3)			
1:2000			
1 AEE LODGEMENT	NRN	15.03.12	
Revision: Amendment	Approved:	Date:	



**Project: MACKAYS TO PEKA PEKA EXPRESSWAY**

**Title: EXISTING SERVICES SETTLEMENT CONTOURS**

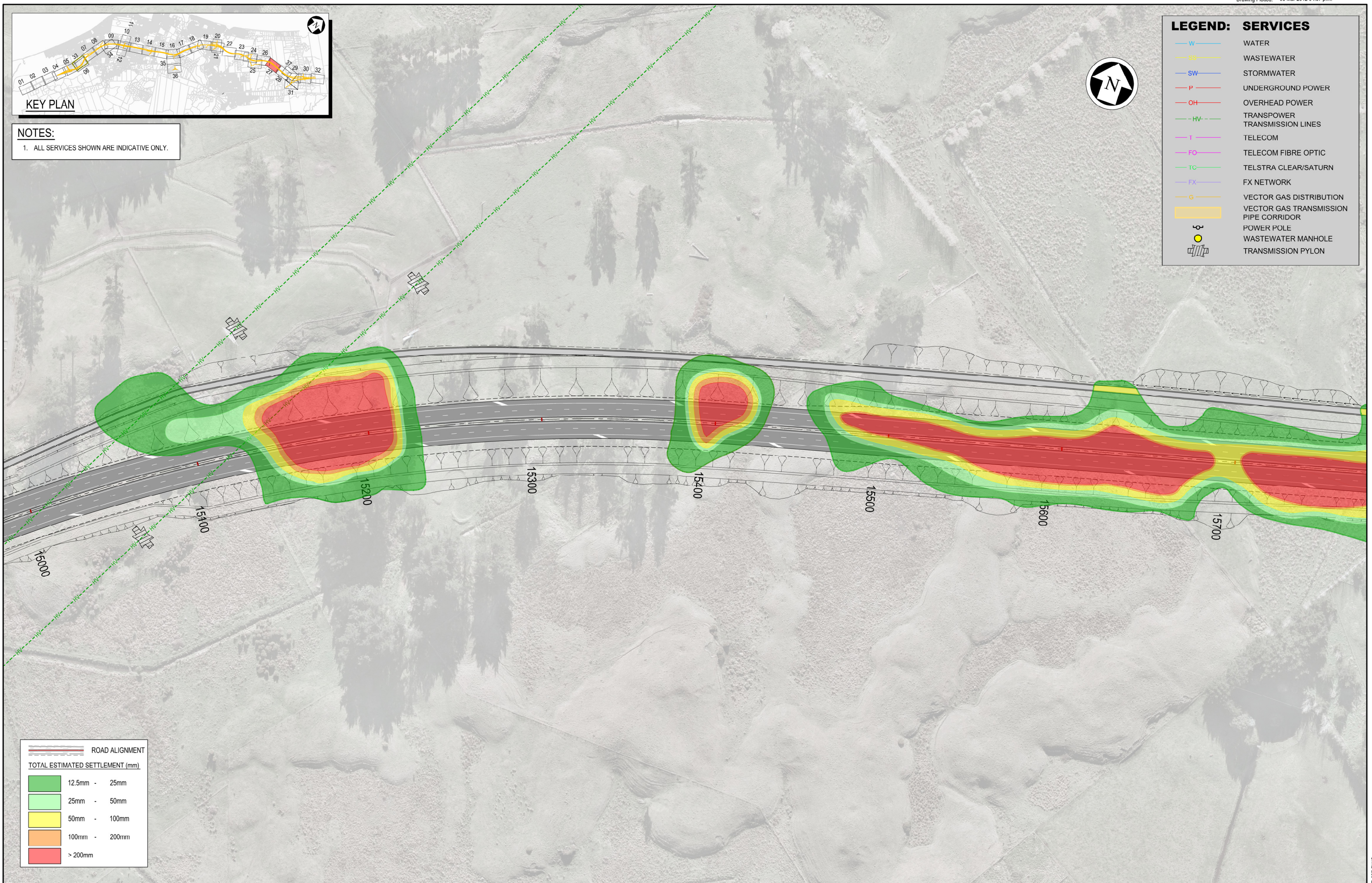
Status: FOR CONSENTING
Document ID: M2PP-AEE-DWG
Drawing No: GT-SE-216
Rev: 1



**NOTES:**  
1. ALL SERVICES SHOWN ARE INDICATIVE ONLY.

**LEGEND: SERVICES**

- W WATER
- SS WASTEWATER
- SW STORMWATER
- P UNDERGROUND POWER
- OH OVERHEAD POWER
- HV TRANSPOWER TRANSMISSION LINES
- T TELECOM
- FO TELECOM FIBRE OPTIC
- TC TELSTRA CLEAR/SATURN
- FX FX NETWORK
- G VECTOR GAS DISTRIBUTION
- PIPE CORRIDOR
- POWER POLE
- WASTEWATER MANHOLE
- TRANSMISSION PYLON



ROAD ALIGNMENT	
TOTAL ESTIMATED SETTLEMENT (mm)	
	12.5mm - 25mm
	25mm - 50mm
	50mm - 100mm
	100mm - 200mm
	> 200mm

NOTES:

Original Scale (A3)			
1:2000			
1 AEE LODGEMENT	NRN	15.03.12	
Revision: Amendment	Approved:	Date:	



Project: <b>MACKAYS TO PEKA PEKA EXPRESSWAY</b>	
Title: <b>EXISTING SERVICES SETTLEMENT CONTOURS</b>	
Status: FOR CONSENTING	
Document ID: M2PP-AEE-DWG	Rev:
Drawing No: <b>GT-SE-227</b>	1



**NOTES:**  
1. ALL SERVICES SHOWN ARE INDICATIVE ONLY.

LEGEND: SERVICES	
	WATER
	WASTEWATER
	STORMWATER
	UNDERGROUND POWER
	OVERHEAD POWER
	TRANSPOWER TRANSMISSION LINES
	TELECOM
	TELECOM FIBRE OPTIC
	TELSTRA CLEAR/SATURN
	FX NETWORK
	VECTOR GAS DISTRIBUTION
	VECTOR GAS TRANSMISSION PIPE CORRIDOR
	POWER POLE
	WASTEWATER MANHOLE
	TRANSMISSION PYLON



ROAD ALIGNMENT	
TOTAL ESTIMATED SETTLEMENT (mm)	
	12.5mm - 25mm
	25mm - 50mm
	50mm - 100mm
	100mm - 200mm
	> 200mm

NOTES:

Original Scale (A3)			
1:2000			
1	AEE LODGEMENT	NRN	15.03.12
Revision:	Amendment	Approved:	Date:



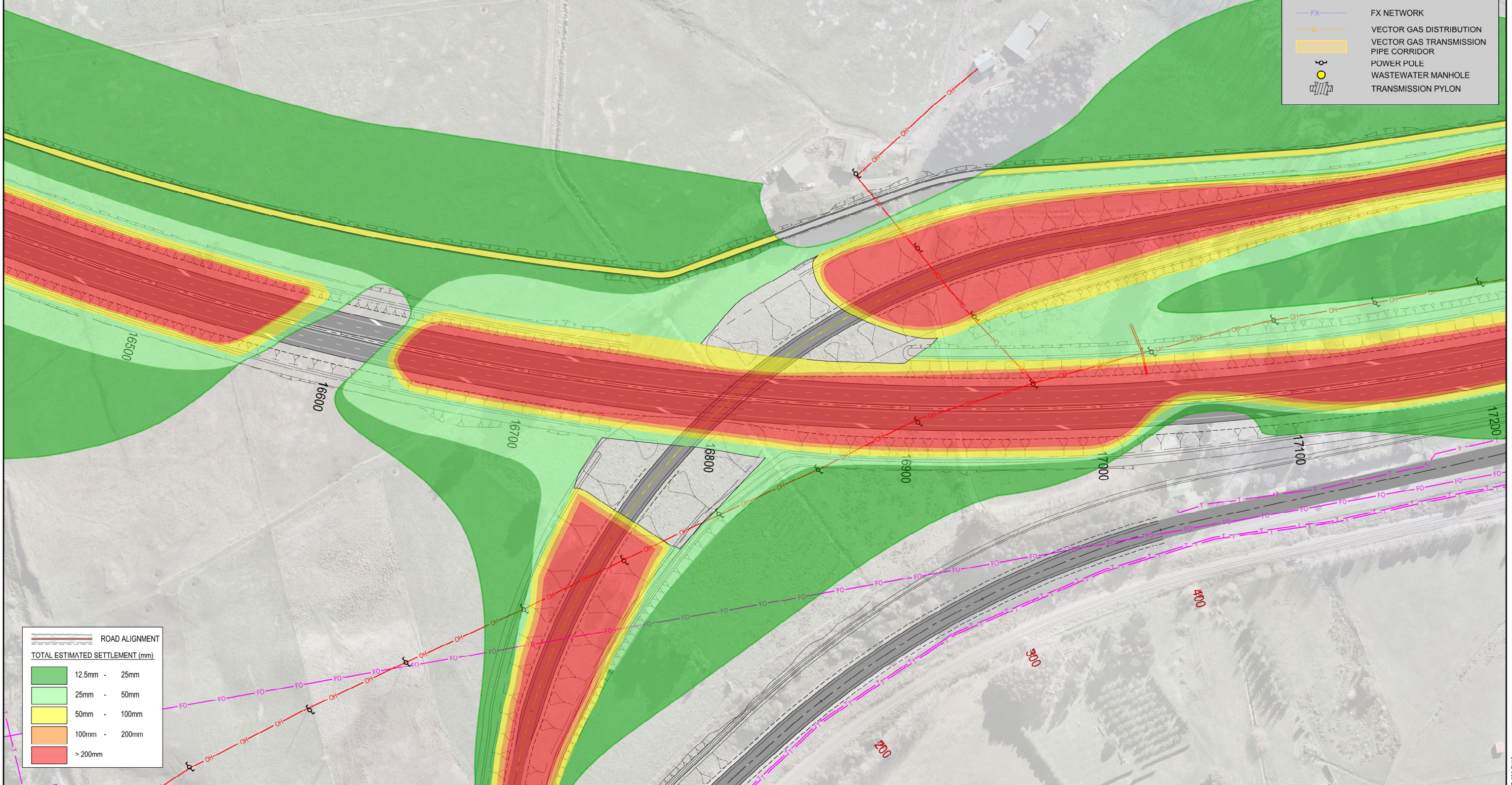
Project: <b>MACKAYS TO PEKA PEKA EXPRESSWAY</b>	
Title: <b>EXISTING SERVICES SETTLEMENT CONTOURS</b>	
Status: FOR CONSENTING	
Document ID: M2PP-AEE-DWG	Rev:
Drawing No: <b>GT-SE-228</b>	<b>1</b>



**NOTES:**  
1. ALL SERVICES SHOWN ARE INDICATIVE ONLY.

**LEGEND: SERVICES**

W	WATER
SS	WASTEWATER
SW	STORMWATER
P	UNDERGROUND POWER
OH	OVERHEAD POWER
HV	TRANSPOWER TRANSMISSION LINES
T	TELECOM
FO	TELECOM FIBRE OPTIC
TC	TELSTRA CLEAR/SATURN
FX	FX NETWORK
G	VECTOR GAS DISTRIBUTION
	VECTOR GAS TRANSMISSION PIPE CORRIDOR
⊕	POWER POLE
⊙	WASTEWATER MANHOLE
⊕	TRANSMISSION PYLON



**ROAD ALIGNMENT**

**TOTAL ESTIMATED SETTLEMENT (mm)**

Green	12.5mm - 25mm
Light Green	25mm - 50mm
Yellow	50mm - 100mm
Orange	100mm - 200mm
Red	> 200mm

**NOTES:**

Original Scale (A3)	
1:2000	

1	AEE LODGEMENT	NRN	15.03.12
Revision:	Amendment	Approved:	Date:



**Project:** MACKAYS TO PEKA PEKA EXPRESSWAY

**Title:** EXISTING SERVICES SETTLEMENT CONTOURS

Status: FOR CONSENTING

Document ID: M2PP-AEE-DWG Rev:

Drawing No: GT-SE-229 1