

**LEGEND: SERVICES**

- W WATER
- SS WASTEWATER
- SW STORMWATER
- P UNDERGROUND POWER
- OH OVERHEAD POWER
- HV TRANSPOWER TRANSMISSION LINES
- T TELECOM
- FO TELECOM FIBRE OPTIC
- TC TELSTRA CLEAR/SATURN
- FX FX NETWORK
- G VECTOR GAS DISTRIBUTION
- VECTOR GAS TRANSMISSION PIPE CORRIDOR
- POWER POLE
- WASTEWATER MANHOLE
- ⊕ TRANSMISSION PYLON

NOTES:

Original Scale (A3)		
1 AEE LODGEMENT	NRN	15.03.12
Revision: Amendment	Approved:	Date:



**Project: MACKAYS TO PEKA PEKA EXPRESSWAY**

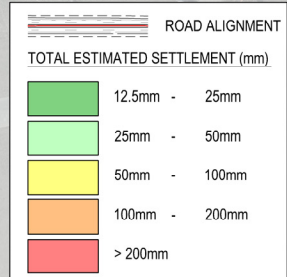
**Title: EXISTING SERVICES SETTLEMENT CONTOURS**

Status: FOR CONSENTING	Rev:
Document ID: M2PP-AEE-DWG	Rev:
Drawing No: <b>GT-SE-210</b>	<b>A</b>





**NOTES:**  
1. ALL SERVICES SHOWN ARE INDICATIVE ONLY.



**LEGEND: SERVICES**

W	WATER
SS	WASTEWATER
SW	STORMWATER
P	UNDERGROUND POWER
OH	OVERHEAD POWER
HV	TRANSPOWER TRANSMISSION LINES
T	TELECOM
FO	TELECOM FIBRE OPTIC
TC	TELSTRA CLEAR/SATURN
FX	FX NETWORK
G	VECTOR GAS DISTRIBUTION
G	VECTOR GAS TRANSMISSION
G	PIPE CORRIDOR
⊙	POWER POLE
⊙	WASTEWATER MANHOLE
⊙	TRANSMISSION PYLON

NOTES:

Original Scale (A3)			
1	AEE LODGEMENT	NRN	15.03.12
Revision:	Amendment	Approved:	Date:



**MACKAYS TO PEKA PEKA EXPRESSWAY**

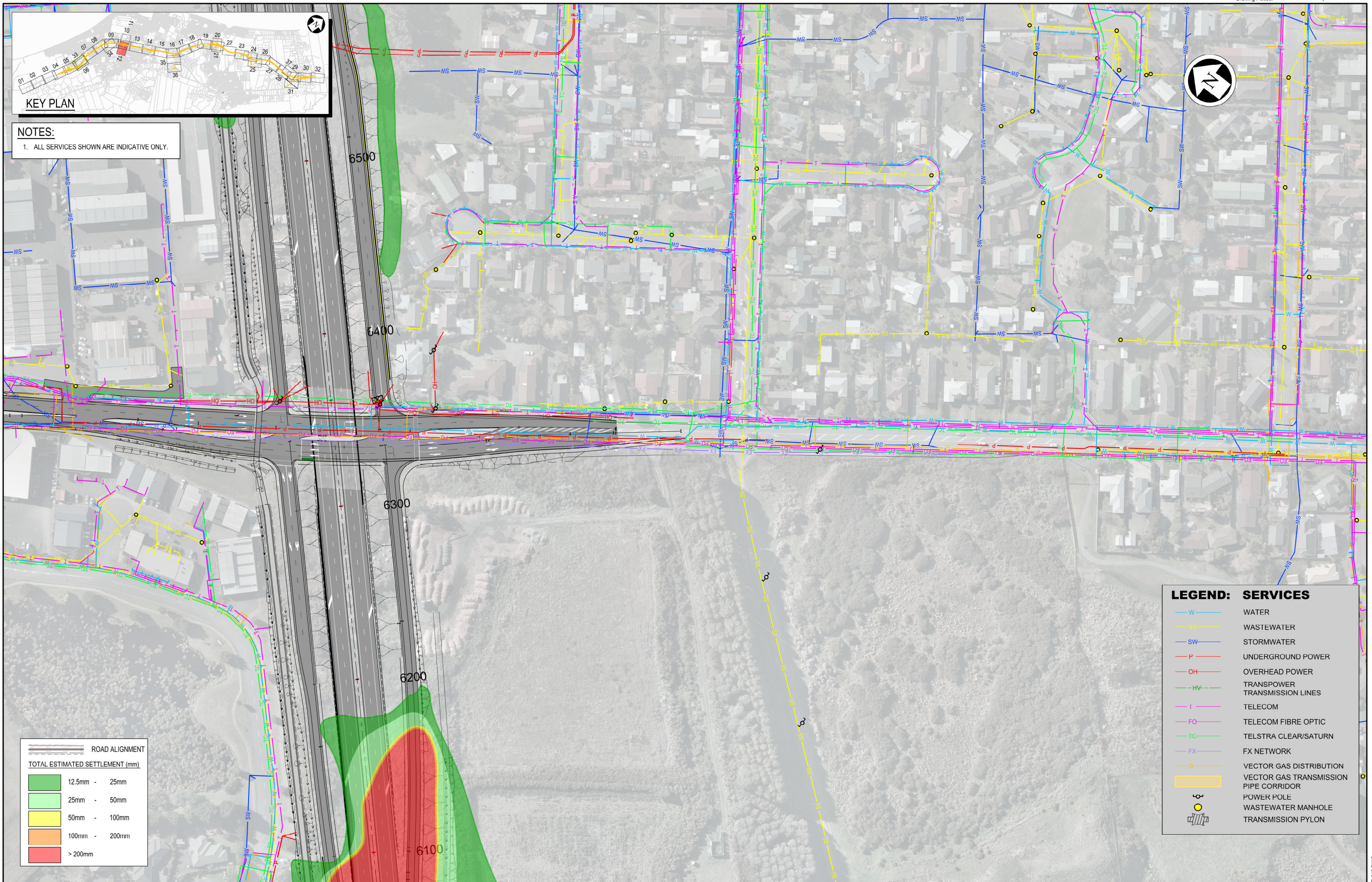
EXISTING SERVICES SETTLEMENT CONTOURS

Status: FOR CONSENTING

Document ID: M2PP-AEE-DWG Rev. 1

Drawing No: GT-SE-211





**NOTES:**  
1. ALL SERVICES SHOWN ARE INDICATIVE ONLY.

ROAD ALIGNMENT	
TOTAL ESTIMATED SETTLEMENT (mm)	
	12.5mm - 25mm
	25mm - 50mm
	50mm - 100mm
	100mm - 200mm
	> 200mm

LEGEND: SERVICES	
— W —	WATER
— SS —	WASTEWATER
— SW —	STORMWATER
— P —	UNDERGROUND POWER
— OH —	OVERHEAD POWER
— HV —	TRANSPOWER TRANSMISSION LINES
— T —	TELECOM
— FO —	TELECOM FIBRE OPTIC
— TC —	TELSTRA CLEAR/SATURN
— FX —	FX NETWORK
— G —	VECTOR GAS DISTRIBUTION
— G —	VECTOR GAS TRANSMISSION PIPE CORRIDOR
	POWER POLE
	WASTEWATER MANHOLE
	TRANSMISSION PYLON

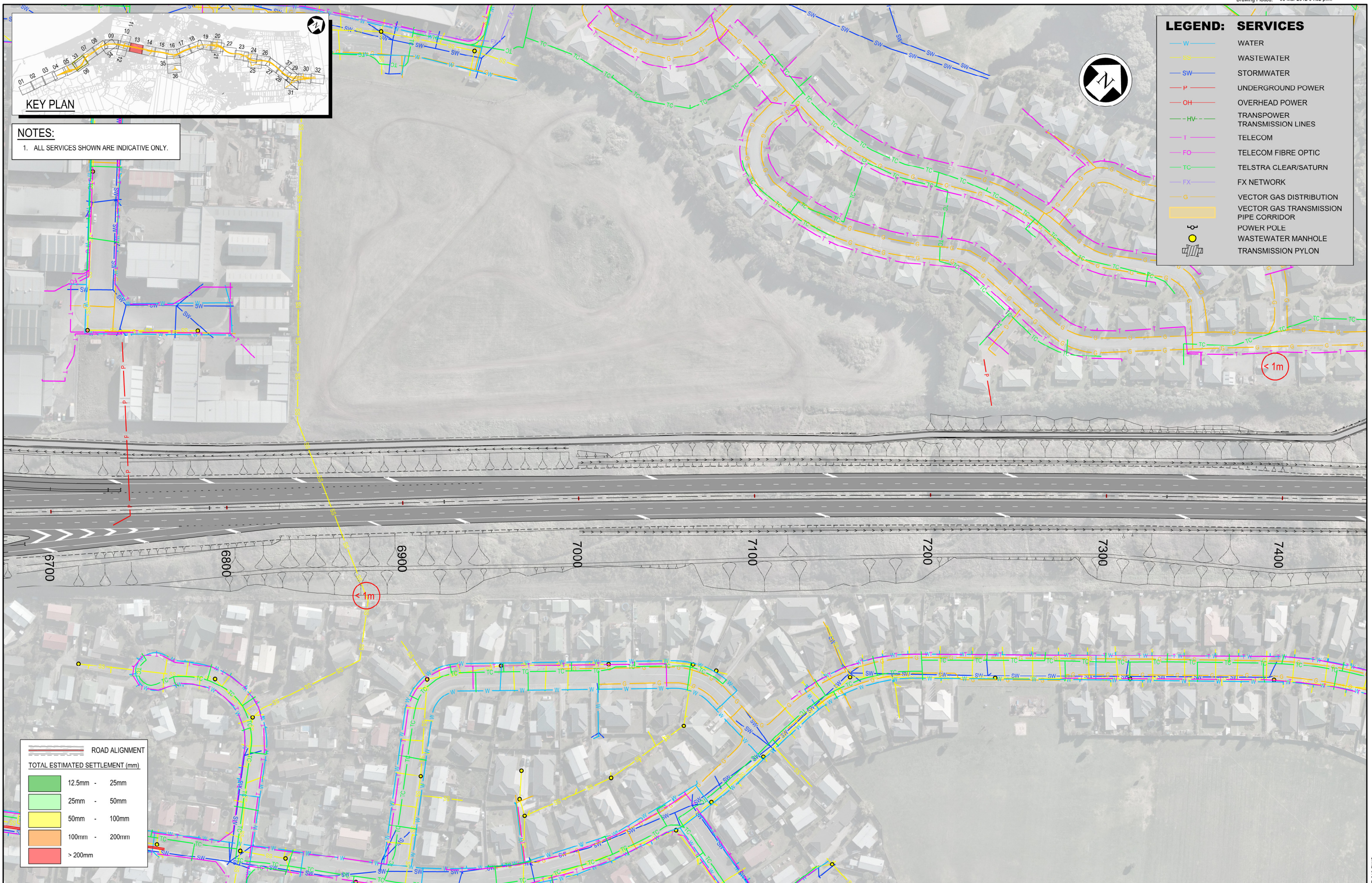
NOTES:

Original Scale (A3)			
1	AEE LODGEMENT	NRN	15.03.12
Revision:	Amendment	Approved:	Date:



Project: <b>MACKAYS TO PEKA PEKA EXPRESSWAY</b>	
Title: <b>EXISTING SERVICES SETTLEMENT CONTOURS</b>	
Status: FOR CONSENTING	
Document ID: M2PP-AEE-DWG	Rev:
Drawing No: <b>GT-SE-212</b>	1





**LEGEND: SERVICES**

- W WATER
- SS WASTEWATER
- SW STORMWATER
- P UNDERGROUND POWER
- OH OVERHEAD POWER
- HV TRANSPOWER TRANSMISSION LINES
- T TELECOM
- FO TELECOM FIBRE OPTIC
- TC TELSTRA CLEAR/SATURN
- FX FX NETWORK
- G VECTOR GAS DISTRIBUTION
- G VECTOR GAS TRANSMISSION PIPE CORRIDOR
- POWER POLE
- WASTEWATER MANHOLE
- TRANSMISSION PYLON

**NOTES:**  
1. ALL SERVICES SHOWN ARE INDICATIVE ONLY.

ROAD ALIGNMENT	
TOTAL ESTIMATED SETTLEMENT (mm)	
	12.5mm - 25mm
	25mm - 50mm
	50mm - 100mm
	100mm - 200mm
	> 200mm

NOTES:

Original Scale (A3)			
1:2000			
1 AEE LODGEMENT	NRN	15.03.12	
Revision: Amendment	Approved:	Date:	

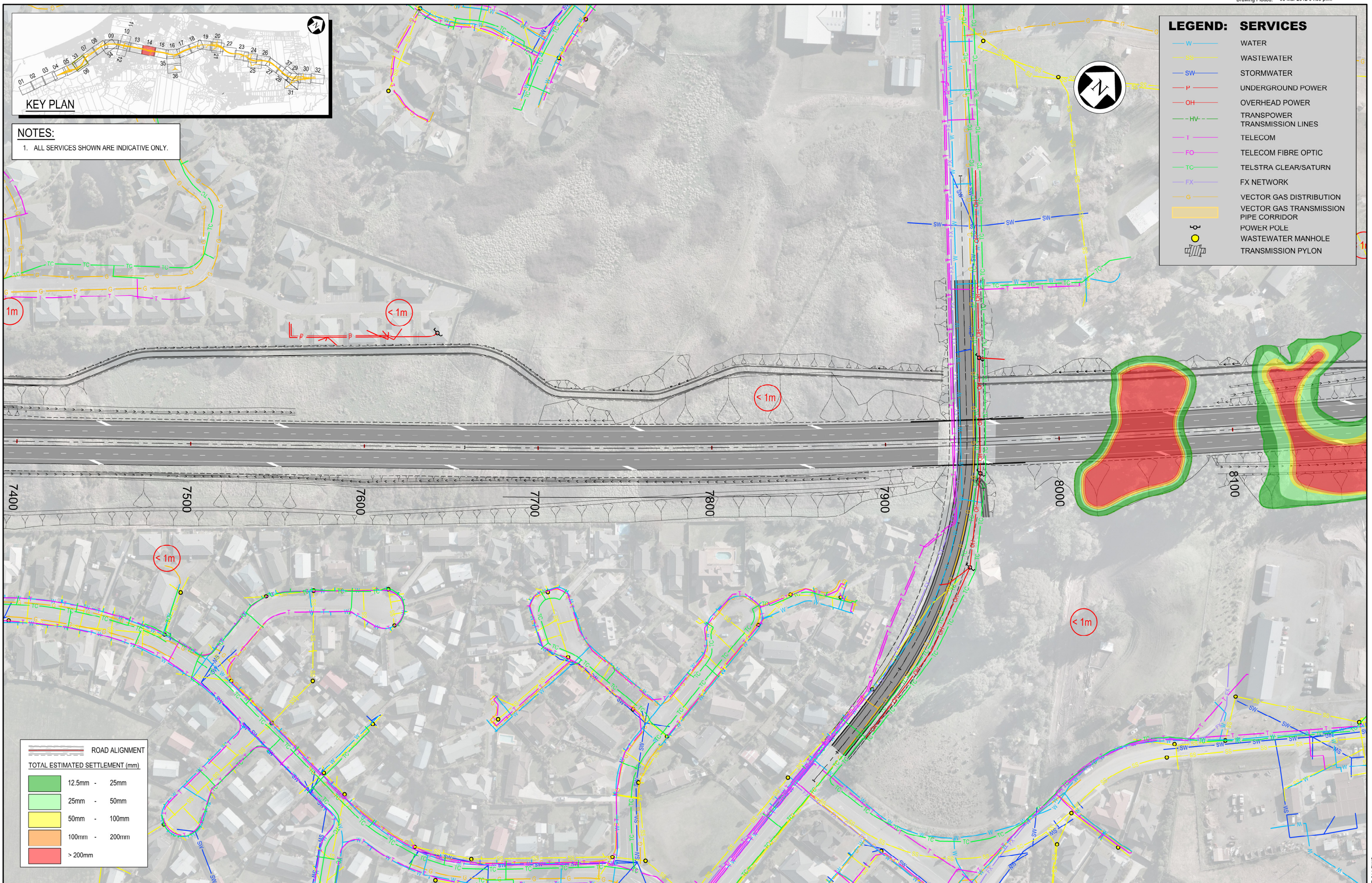


**Project: MACKAYS TO PEKA PEKA EXPRESSWAY**

**Title: EXISTING SERVICES SETTLEMENT CONTOURS**

Status: FOR CONSENTING
Document ID: M2PP-AEE-DWG
Drawing No: GT-SE-213
Rev: 1





**NOTES:**  
 1. ALL SERVICES SHOWN ARE INDICATIVE ONLY.

**LEGEND: SERVICES**

W	WATER
SS	WASTEWATER
SW	STORMWATER
P	UNDERGROUND POWER
OH	OVERHEAD POWER
HV	TRANSPOWER TRANSMISSION LINES
T	TELECOM
FO	TELECOM FIBRE OPTIC
TC	TELSTRA CLEAR/SATURN
FX	FX NETWORK
G	VECTOR GAS DISTRIBUTION
(Yellow box)	VECTOR GAS TRANSMISSION PIPE CORRIDOR
(Circle with dot)	POWER POLE
(Circle with cross)	WASTEWATER MANHOLE
(Square with cross)	TRANSMISSION PYLON

**ROAD ALIGNMENT**

**TOTAL ESTIMATED SETTLEMENT (mm)**

(Green)	12.5mm - 25mm
(Light Green)	25mm - 50mm
(Yellow)	50mm - 100mm
(Orange)	100mm - 200mm
(Red)	> 200mm

NOTES:

Original Scale (A3)	1:2000
1 AEE LODGEMENT	NRN 15.03.12
Revision: Amendment	Approved: Date:



**Project: MACKAYS TO PEKA PEKA EXPRESSWAY**

**Title: EXISTING SERVICES SETTLEMENT CONTOURS**

Status: FOR CONSENTING

Document ID: M2PP-AEE-DWG Rev:

Drawing No: **GT-SE-214**

1