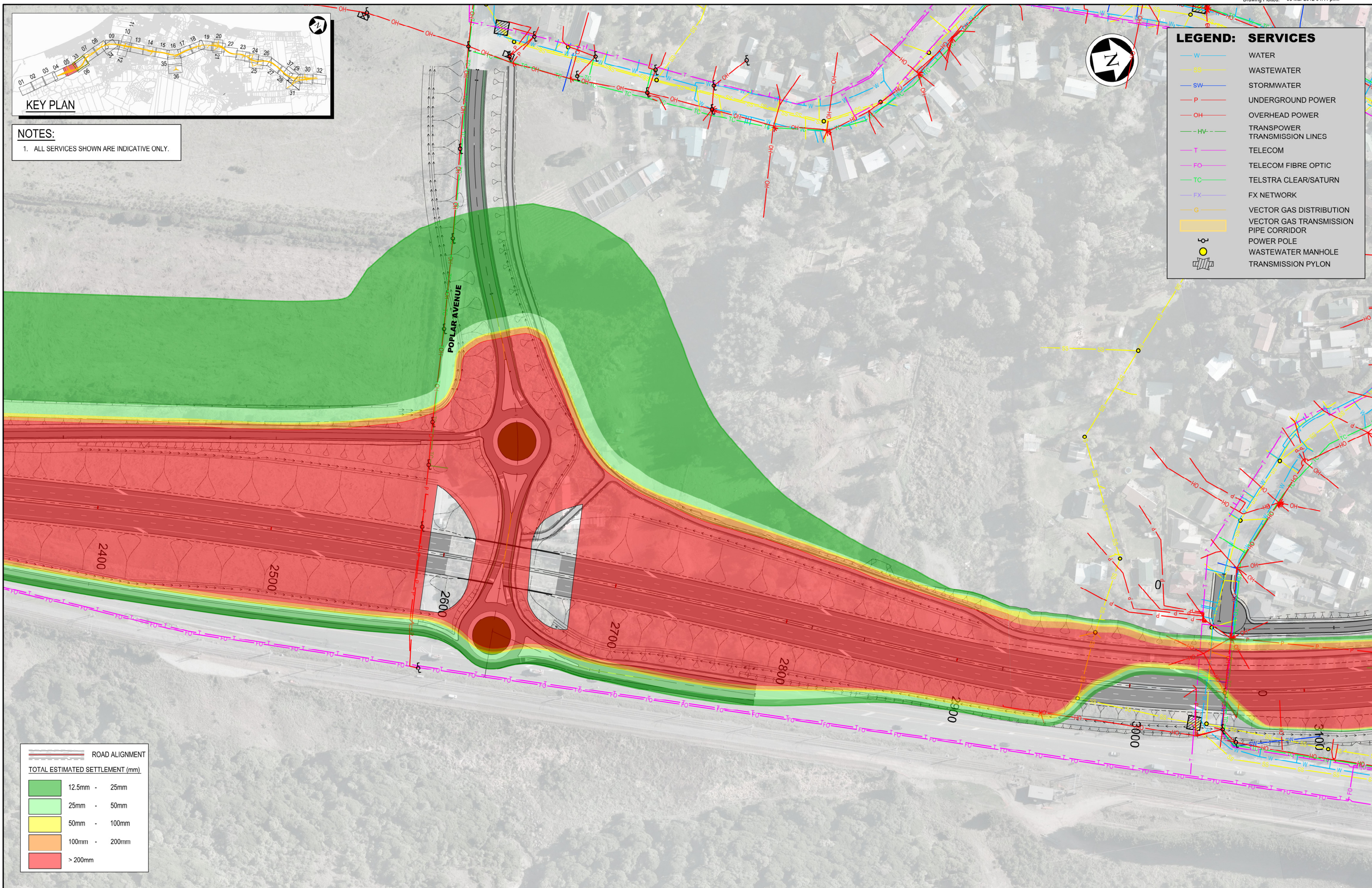




**NOTES:**  
1. ALL SERVICES SHOWN ARE INDICATIVE ONLY.

**LEGEND: SERVICES**

W	WATER
SS	WASTEWATER
SW	STORMWATER
P	UNDERGROUND POWER
OH	OVERHEAD POWER
HV	TRANSPOWER TRANSMISSION LINES
T	TELECOM
FO	TELECOM FIBRE OPTIC
TC	TELSTRA CLEAR/SATURN
FX	FX NETWORK
G	VECTOR GAS DISTRIBUTION
(Yellow Box)	VECTOR GAS TRANSMISSION PIPE CORRIDOR
(Pole Symbol)	POWER POLE
(Circle Symbol)	WASTEWATER MANHOLE
(Pylon Symbol)	TRANSMISSION PYLON



**ROAD ALIGNMENT**

**TOTAL ESTIMATED SETTLEMENT (mm)**

(Green)	12.5mm - 25mm
(Light Green)	25mm - 50mm
(Yellow)	50mm - 100mm
(Orange)	100mm - 200mm
(Red)	> 200mm

NOTES:

Original Scale (A3)			
1	AEE LODGEMENT	NRN	15.03.12
Revision:	Amendment	Approved:	Date:



**Project:** MACKAYS TO PEKA PEKA EXPRESSWAY

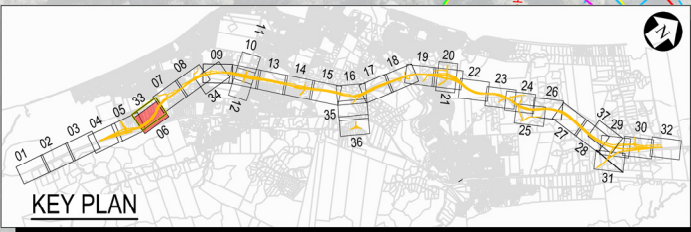
**Title:** EXISTING SERVICES SETTLEMENT CONTOURS

Status: FOR CONSENTING

Document ID: M2PP-AEE-DWG Rev: 1

Drawing No: GT-SE-205





**NOTES:**  
1. ALL SERVICES SHOWN ARE INDICATIVE ONLY.



ROAD ALIGNMENT	
TOTAL ESTIMATED SETTLEMENT (mm)	
Green	12.5mm - 25mm
Light Green	25mm - 50mm
Yellow	50mm - 100mm
Orange	100mm - 200mm
Red	> 200mm

LEGEND: SERVICES	
Blue line	WATER
Yellow line	WASTEWATER
Light blue line	STORMWATER
Red line	UNDERGROUND POWER
Orange line	OVERHEAD POWER
Green line	TRANSPOWER TRANSMISSION LINES
Purple line	TELECOM
Pink line	TELECOM FIBRE OPTIC
Light green line	TELSTRA CLEAR/SATURN
Light blue line	FX NETWORK
Brown line	VECTOR GAS DISTRIBUTION
Yellow line	VECTOR GAS TRANSMISSION PIPE CORRIDOR
Circle with dot	POWER POLE
Circle with cross	WASTEWATER MANHOLE
Triangle	TRANSMISSION PYLON

NOTES:

Original Scale (A3)			
A	AEE LODGEMENT	NRN	56/2812
Revision:	Amendment	Approved:	Date:

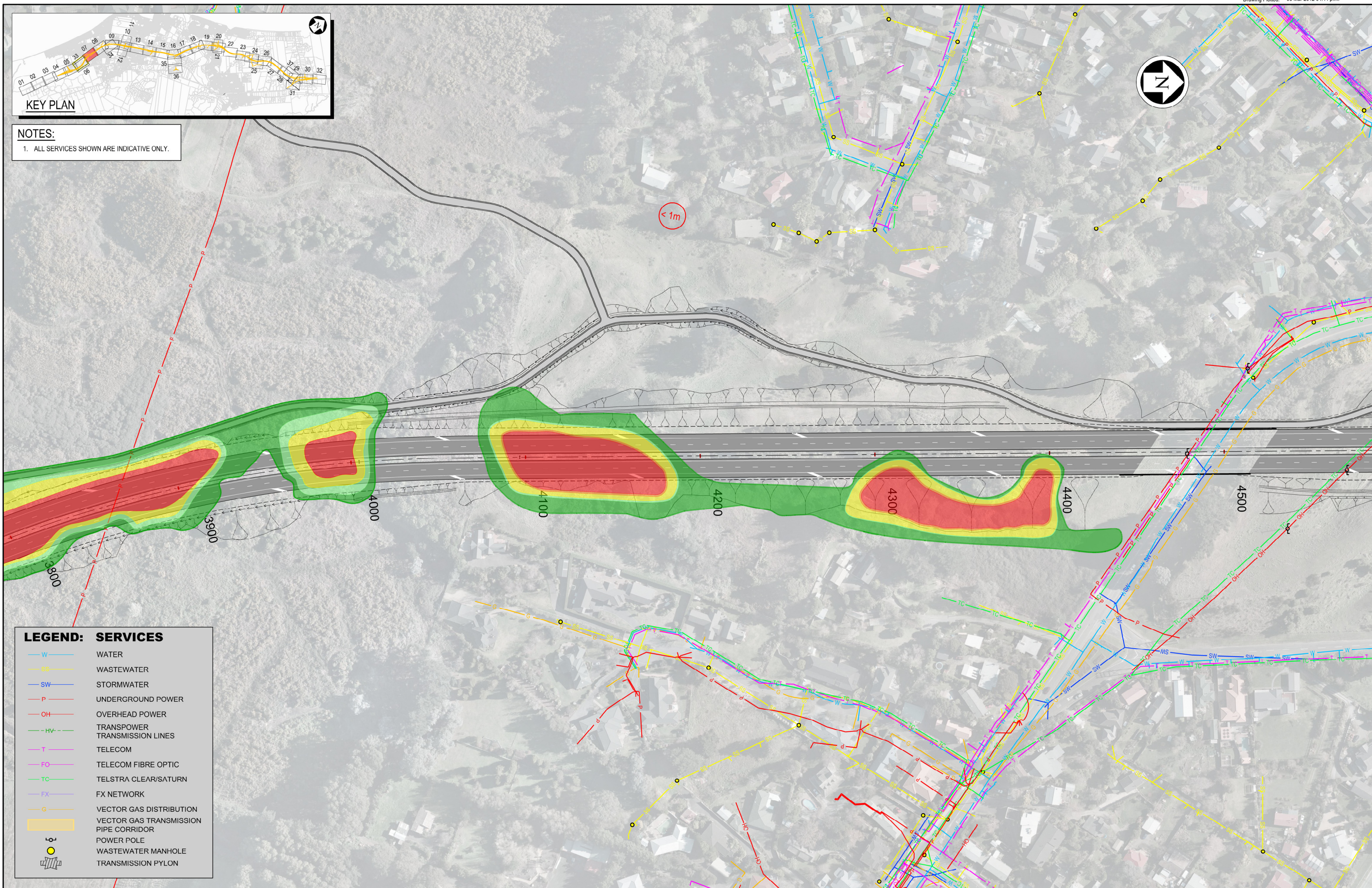


Project: <b>MACKAYS TO PEKA PEKA EXPRESSWAY</b>	
Title: <b>EXISTING SERVICES SETTLEMENT CONTOURS</b>	
Status: FOR CONSENTING	Rev:
Document ID: M2PP-AEE-DWG	Rev:
Drawing No: <b>GT-SE-206</b>	1





**NOTES:**  
1. ALL SERVICES SHOWN ARE INDICATIVE ONLY.



**LEGEND: SERVICES**

W	WATER
SS	WASTEWATER
SW	STORMWATER
P	UNDERGROUND POWER
OH	OVERHEAD POWER
HV	TRANSPOWER TRANSMISSION LINES
T	TELECOM
FO	TELECOM FIBRE OPTIC
TC	TELSTRA CLEAR/SATURN
FX	FX NETWORK
G	VECTOR GAS DISTRIBUTION
[Yellow Shaded Area]	VECTOR GAS TRANSMISSION PIPE CORRIDOR
[Pole Symbol]	POWER POLE
[Manhole Symbol]	WASTEWATER MANHOLE
[Pylon Symbol]	TRANSMISSION PYLON

NOTES:

Original Scale (A3)			
1	AEE LODGEMENT	NRN	15.03.12
Revision:	Amendment	Approved:	Date:



**MACKAYS TO PEKA PEKA EXPRESSWAY**

EXISTING SERVICES SETTLEMENT CONTOURS

Status:	FOR CONSENTING
Document ID:	M2PP-AEE-DWG
Drawing No:	GT-SE-207
Rev:	1





**NOTES:**  
1. ALL SERVICES SHOWN ARE INDICATIVE ONLY.

**LEGEND: SERVICES**

- W WATER
- SS WASTEWATER
- SW STORMWATER
- P UNDERGROUND POWER
- OH OVERHEAD POWER
- HV TRANSPOWER TRANSMISSION LINES
- T TELECOM
- FO TELECOM FIBRE OPTIC
- TC TELSTRA CLEAR/SATURN
- FX FX NETWORK
- G VECTOR GAS DISTRIBUTION
- VECTOR GAS TRANSMISSION PIPE CORRIDOR
- P POWER POLE
- WASTEWATER MANHOLE
- TRANSMISSION PYLON

**ROAD ALIGNMENT**

**TOTAL ESTIMATED SETTLEMENT (mm)**

- 12.5mm - 25mm
- 25mm - 50mm
- 50mm - 100mm
- 100mm - 200mm
- > 200mm

NOTES:

Original Scale (A3)			
1:2000			
1 AEE LODGEMENT	NRN	15.03.12	
Revision: Amendment	Approved:	Date:	



**Project: MACKAYS TO PEKA PEKA EXPRESSWAY**

**Title: EXISTING SERVICES SETTLEMENT CONTOURS**

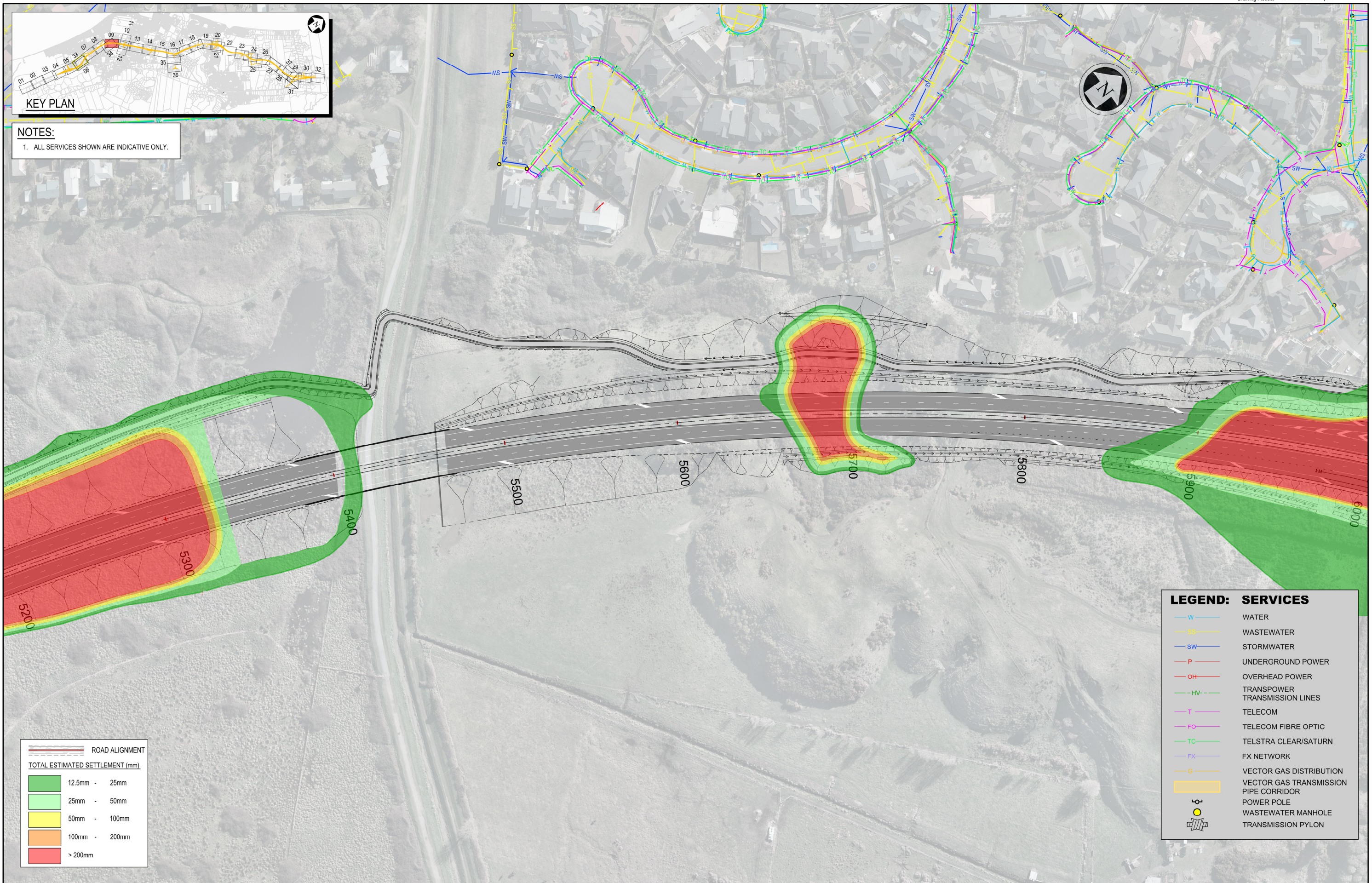
Status: FOR CONSENTING

Document ID: M2PP-AEE-DWG Rev:

Drawing No: **GT-SE-208**

1





**NOTES:**  
1. ALL SERVICES SHOWN ARE INDICATIVE ONLY.

ROAD ALIGNMENT	
TOTAL ESTIMATED SETTLEMENT (mm)	
	12.5mm - 25mm
	25mm - 50mm
	50mm - 100mm
	100mm - 200mm
	> 200mm

LEGEND: SERVICES	
— W —	WATER
— SS —	WASTEWATER
— SW —	STORMWATER
— P —	UNDERGROUND POWER
— OH —	OVERHEAD POWER
— HV —	TRANSPOWER TRANSMISSION LINES
— T —	TELECOM
— FO —	TELECOM FIBRE OPTIC
— TC —	TELSTRA CLEAR/SATURN
— FX —	FX NETWORK
— G —	VECTOR GAS DISTRIBUTION
—	VECTOR GAS TRANSMISSION PIPE CORRIDOR
⊕	POWER POLE
○	WASTEWATER MANHOLE
⊕	TRANSMISSION PYLON

NOTES:

Original Scale (A3)			
1	AEE LODGEMENT	NRN	15.03.12
Revision:	Amendment	Approved:	Date:



Project: <b>MACKAYS TO PEKA PEKA EXPRESSWAY</b>	
Title: <b>EXISTING SERVICES SETTLEMENT CONTOURS</b>	
Status: FOR CONSENTING	
Document ID: M2PP-AEE-DWG	Rev:
Drawing No: <b>GT-SE-209</b>	<b>1</b>