

KEY PLAN

LEGEND:

- SETTLEMENT ANALYSES
- CROSS SECTIONS
- ROAD ALIGNMENT
- CONSTRUCTION DESIGNATION LINE
- NON PEAT
- PEAT
- OFFSET FLOOD STORAGE AREA
- STORMWATER WETLAND

TOTAL ESTIMATED SETTLEMENT (mm)

- 12.5mm - 25mm
- 25mm - 50mm
- 50mm - 100mm
- 100mm - 200mm
- > 200mm

NOTES:

Original Scale (A3)
1:5000

1	AEE LODGEMENT	NRN	15.03.12
Revision:	Amendment	Approved:	Date:



MACKAYS TO PEKA PEKA EXPRESSWAY

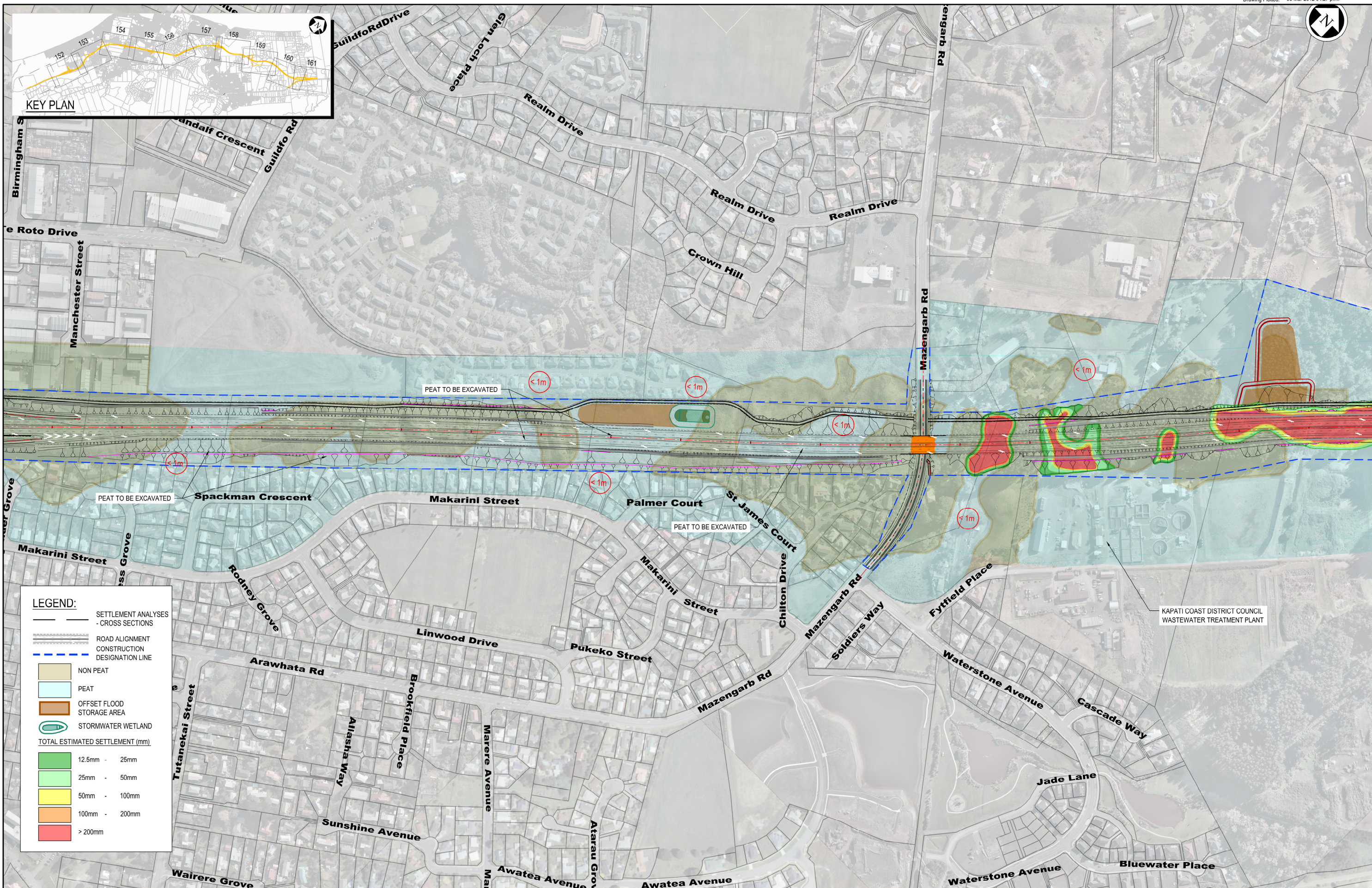
TITLE: TOTAL ESTIMATED SETTLEMENTS SHEET 4 OF 11

STATUS: FOR CONSENTING

DOCUMENT ID: M2PP-AEE-DWG

DRAWING NO: GT-SE-154

REV: 1



LEGEND:

- SETTLEMENT ANALYSES - CROSS SECTIONS
- ROAD ALIGNMENT CONSTRUCTION DESIGNATION LINE
- NON PEAT
- PEAT
- OFFSET FLOOD STORAGE AREA
- STORMWATER WETLAND
- TOTAL ESTIMATED SETTLEMENT (mm)
 - 12.5mm - 25mm
 - 25mm - 50mm
 - 50mm - 100mm
 - 100mm - 200mm
 - > 200mm

NOTES:

Original Scale (A3)		1:5000	
1	AEE LODGEMENT	NRN	15.03.12
Revision:	Amendment	Approved:	Date:



MACKAYS TO PEKA PEKA EXPRESSWAY

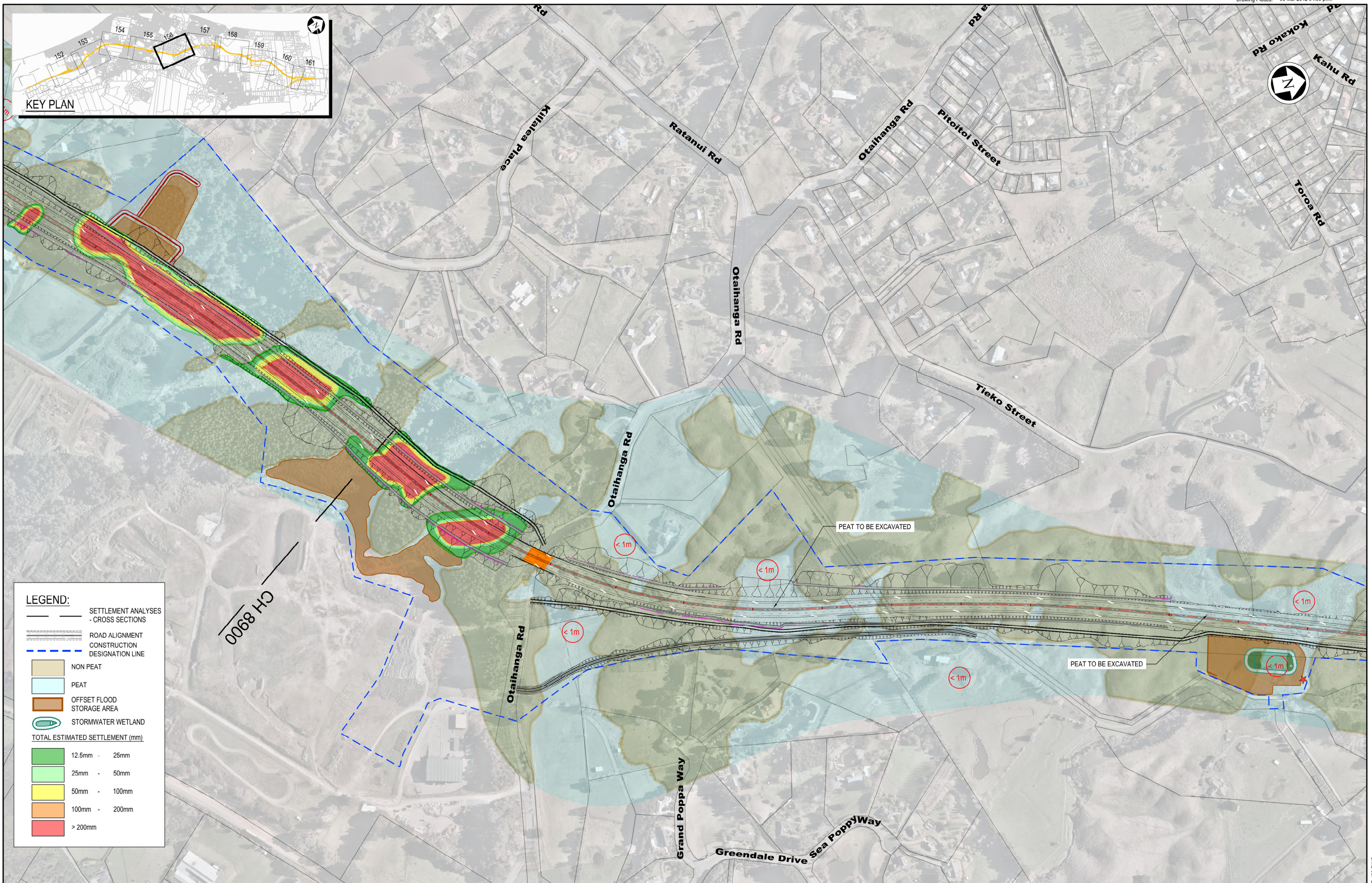
TITLE: TOTAL ESTIMATED SETTLEMENTS SHEET 5 OF 11

STATUS: FOR CONSENTING

DOCUMENT ID: M2PP-AEE-DWG

DRAWING NO: GT-SE-155

REV: 1



LEGEND:

- SETTLEMENT ANALYSES - CROSS SECTIONS
- ROAD ALIGNMENT
- CONSTRUCTION
- DESIGNATION LINE
- NON PEAT
- PEAT
- OFFSET FLOOD STORAGE AREA
- STORMWATER WETLAND

TOTAL ESTIMATED SETTLEMENT (mm)

- 12.5mm - 25mm
- 25mm - 50mm
- 50mm - 100mm
- 100mm - 200mm
- >200mm

NOTES:

Original Scale (A3)	
1:5000	

1	AEE LODGEMENT	NRN	15.03.12
Revision:	Amendment	Approved:	Date:



Project: **MACKAYS TO PEKA PEKA EXPRESSWAY**

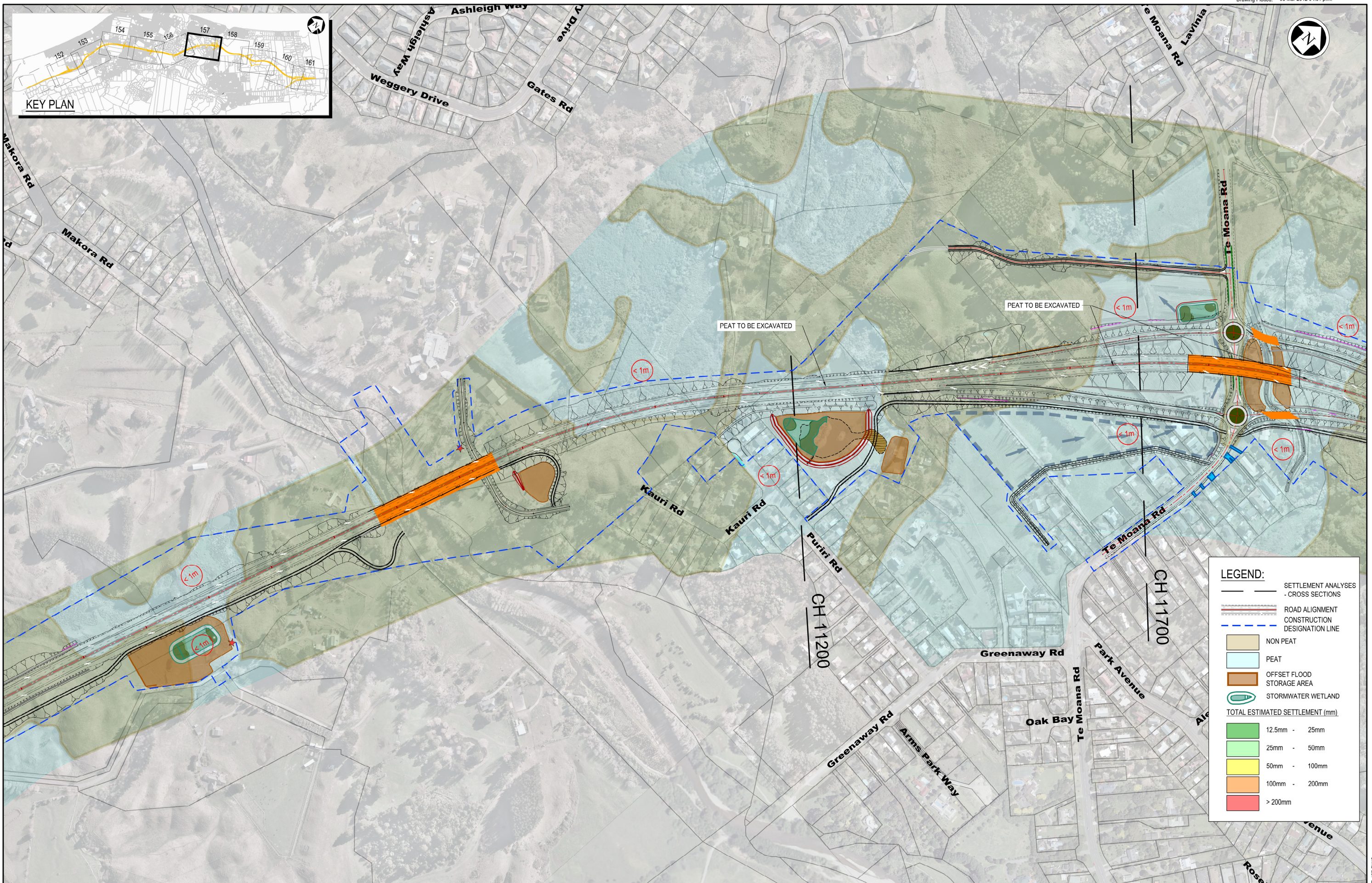
Title: **TOTAL ESTIMATED SETTLEMENTS SHEET 6 OF 11**

Status: FOR CONSENTING

Document ID: M2PP-AEE-DWG

Drawing No: **GT-SE-156**

Rev: 1



KEY PLAN

LEGEND:

- SETTLEMENT ANALYSES - CROSS SECTIONS
- ROAD ALIGNMENT
- CONSTRUCTION DESIGNATION LINE
- NON PEAT
- PEAT
- OFFSET FLOOD STORAGE AREA
- STORMWATER WETLAND

TOTAL ESTIMATED SETTLEMENT (mm)

- 12.5mm - 25mm
- 25mm - 50mm
- 50mm - 100mm
- 100mm - 200mm
- > 200mm

NOTES:

Original Scale (A3)
1:5000

1	AEE LODGEMENT	NRN	15.03.12
Revision:	Amendment	Approved:	Date:



MACKAYS TO PEKA PEKA EXPRESSWAY

Project: MACKAYS TO PEKA PEKA EXPRESSWAY

Title: TOTAL ESTIMATED SETTLEMENTS SHEET 7 OF 11

Status: FOR CONSENTING

Document ID: M2PP-AEE-DWG

Drawing No: GT-SE-157

Rev: 1

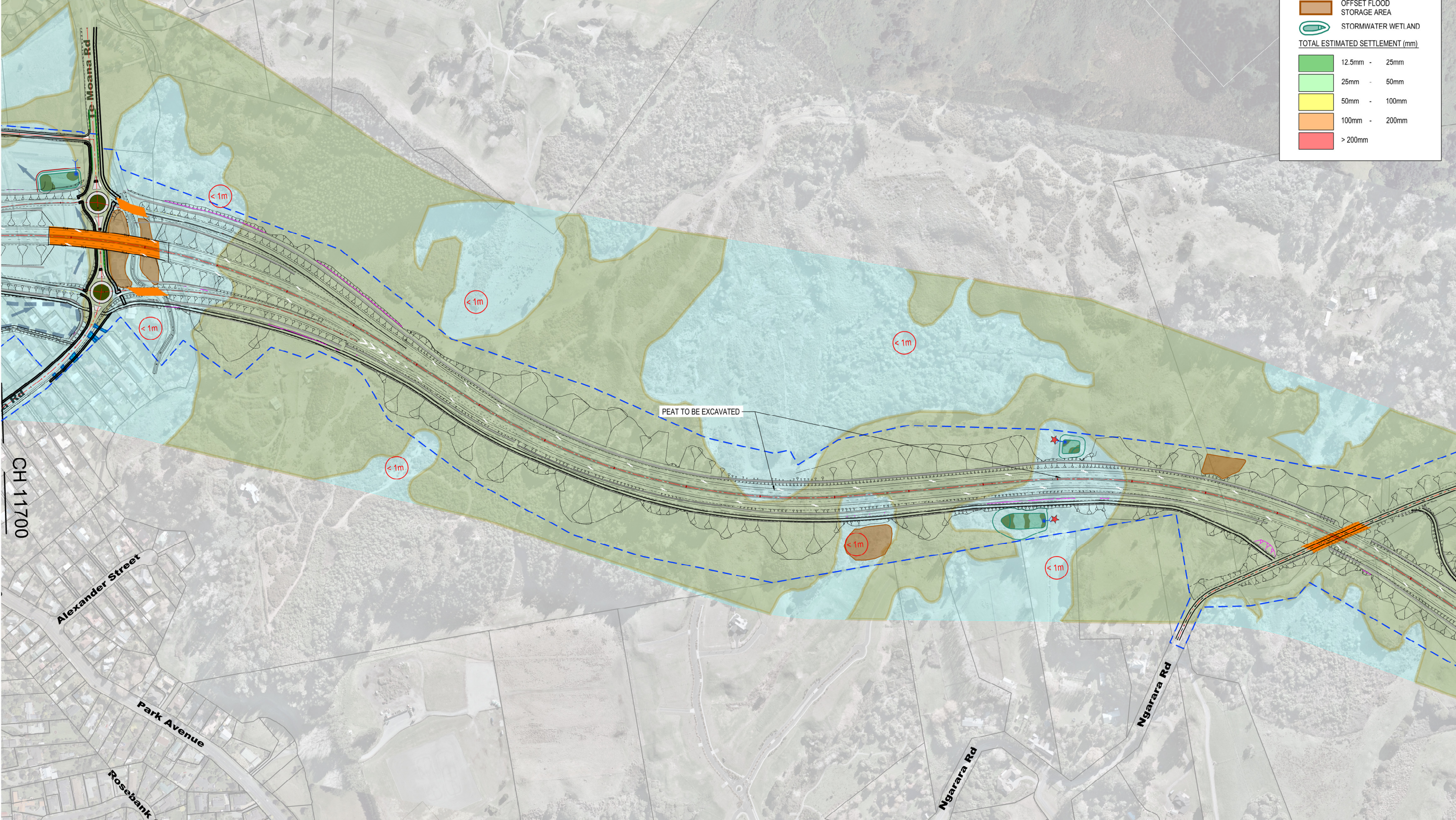


LEGEND:

- SETTLEMENT ANALYSES - CROSS SECTIONS
- ROAD ALIGNMENT CONSTRUCTION DESIGNATION LINE
- NON PEAT
- PEAT
- OFFSET FLOOD STORAGE AREA
- STORMWATER WETLAND

TOTAL ESTIMATED SETTLEMENT (mm)

- 12.5mm - 25mm
- 25mm - 50mm
- 50mm - 100mm
- 100mm - 200mm
- > 200mm



NOTES:

Original Scale (A3)			
1:5000			
1	AEE LODGEMENT	NRN	15.03.12
Revision:	Amendment	Approved:	Date:



MACKAYS TO PEKA PEKA EXPRESSWAY

Project: MACKAYS TO PEKA PEKA EXPRESSWAY

Title: TOTAL ESTIMATED SETTLEMENTS SHEET 8 OF 11

Status:	FOR CONSENTING
Document ID:	M2PP-AEE-DWG
Drawing No:	GT-SE-158
Rev:	1