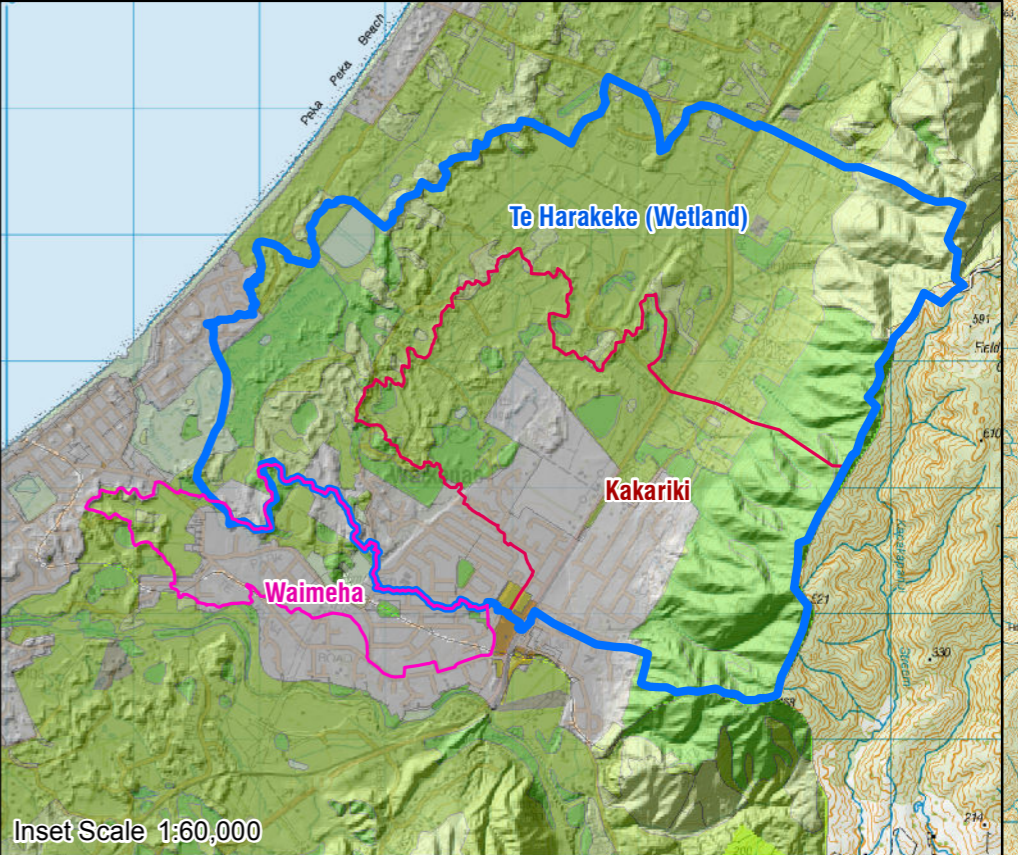
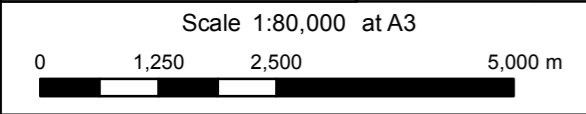


**Legend**

- Catchment Boundaries
- State Highway 1 (SH1)
- Proposed Expressway
- Land Use Overlay**
- Residential
- Commercial
- Industrial
- Urban Grasslands
- Airport Zone
- Exotic Production Forest
- Stable Bush
- Farmed Pasture
- Horticulture



Notes:

1	AEE LODGEMENT	AH	15.03.2012
Revision	Amendment	Approved	Date



Project: <b>MACKAYS TO PEKA PEKA EXPRESSWAY</b>	
Title: <b>Figure 2: Existing Land Use Across the Project Extent</b>	
Status:	
Document ID: M2PP-AEE-DWG	Rev.
Drawing No: EN-WQ-004	1