



**Legend**

- Surface Water Sample Locations
- Environmental Test Pits
- Watercourse
- Proposed Alignment

This map contains data derived in part or wholly from sources other than Beca, and therefore, no representations or warranties are made by Beca as to the accuracy or completeness of this information.

Map intended for distribution as a PDF document.  
Scale may be incorrect when printed.

Contains Crown Copyright Data. Crown Copyright Reserved.

N

0 12.5 25 50

Metres

Scale 1:1,000 at A3

Notes:

Drawing No: M2PP-AEE-DWG-EN-CL-001

A	Revision/Amendment	AH4	15/09/11




Project: <b>MACKAYS TO PEKA PEKA EXPRESSWAY</b>			
Title: Contamination Assessment: Sector 2		Status:	
55 Rata Road		Document ID: GIS-3320901-51	Rev. A

Path: P:\3181318-AKL\3320901\GIS\55\_Workspaces\01\_mxd\GIS-3320901-51\_Contaminated\_Land\_investigation\_sites\_RataRD.mxd



**Legend**

- Environmental Test Pits
- Proposed Alignment

This map contains data derived in part or wholly from sources other than Beca, and therefore, no representations or warranties are made by Beca as to the accuracy or completeness of this information.

Map intended for distribution as a PDF document.  
Scale may be incorrect when printed.

Contains Crown Copyright Data. Crown Copyright Reserved.

N

0 20 40 80  
Metres

Scale 1:1,500 at A3

Notes:

Drawing No: M2PP-AEE-DWG-EN-CL-002

A	Revision/Amendment	AH4	15/09/11




Project: <b>MACKAYS TO PEKA PEKA EXPRESSWAY</b>			
Title: <b>Contamination Assessment: Sector 2</b>		Status: <b>A</b>	
Kāpiti Road Intersection		Document ID: GIS-3320901-52	Rev.:
		Drawing No:	

Path: P:\181816-AKL\3320901\GIS\52\_Workspaces\01\_mxd\GIS-3320901-52\_Contaminated\_land\_investigation\_sites\_KapitiRD.mxd



Notes:

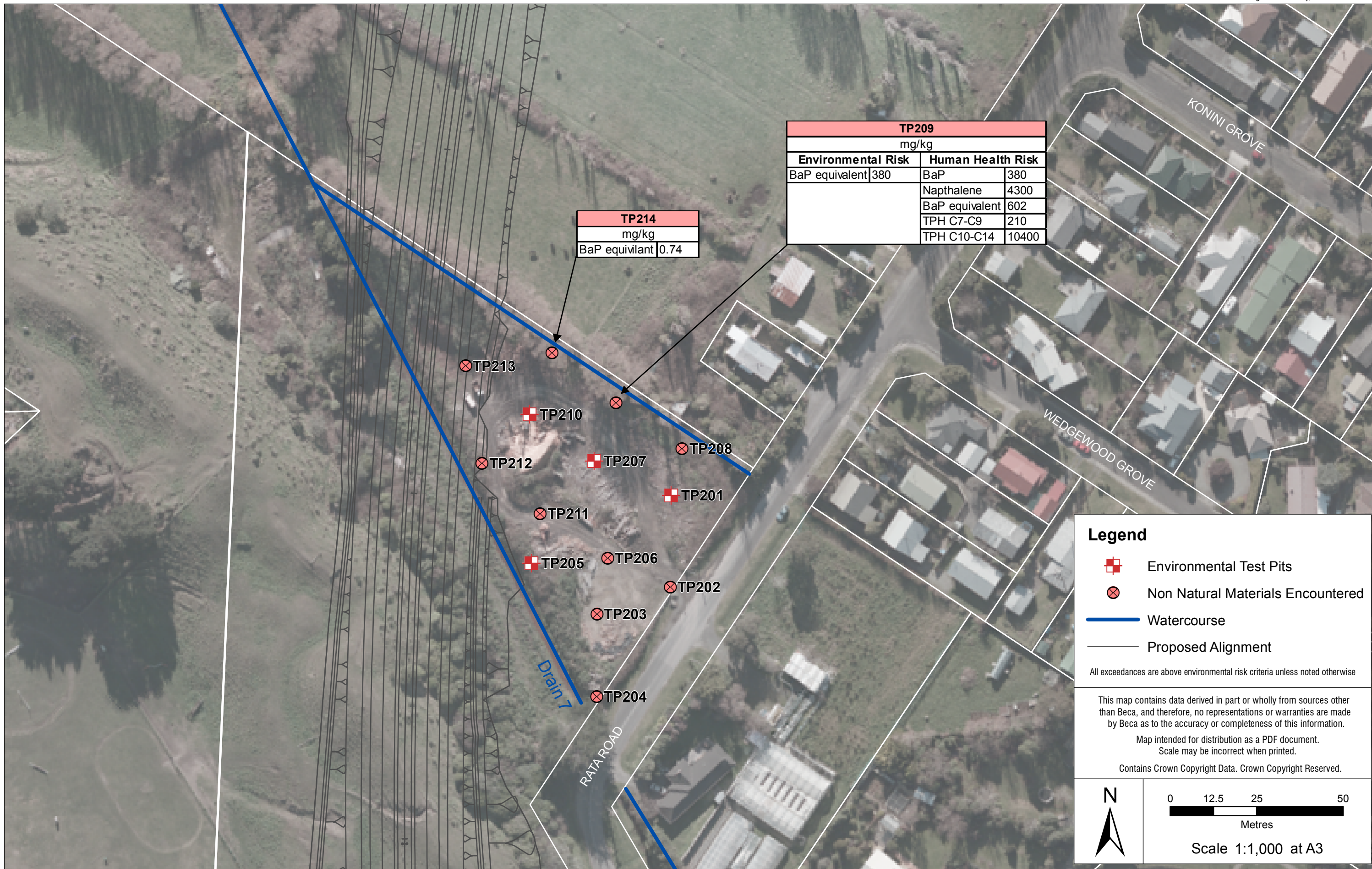
Drawing No: M2PP-AEE-DWG-EN-CL-004

Revision	Amendment	Approved	Date
A		AH4	15/09/11




Project:		<b>MACKAYS TO PEKA PEKA EXPRESSWAY</b>	
Title:		Contamination Assessment: Sector 3 124-154 Te Moana Road	
Status:	Document ID:	Rev.	
	Drawing No:		A
	GIS-3320901-55		

Path: P:\3181318-AKL\3320901\GIS55\_Workspaces\01\_mxd\GIS-3320901-55\_Contaminated\_land\_investigation\_sites\_TeMoanaRd.mxd



**Legend**

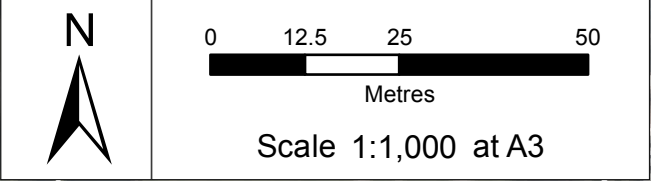
- Environmental Test Pits
- Non Natural Materials Encountered
- Watercourse
- Proposed Alignment

All exceedances are above environmental risk criteria unless noted otherwise

This map contains data derived in part or wholly from sources other than Beca, and therefore, no representations or warranties are made by Beca as to the accuracy or completeness of this information.

Map intended for distribution as a PDF document.  
Scale may be incorrect when printed.

Contains Crown Copyright Data. Crown Copyright Reserved.



Notes:  
Drawing No: M2PP-AEE-DWG-EN-CL-005

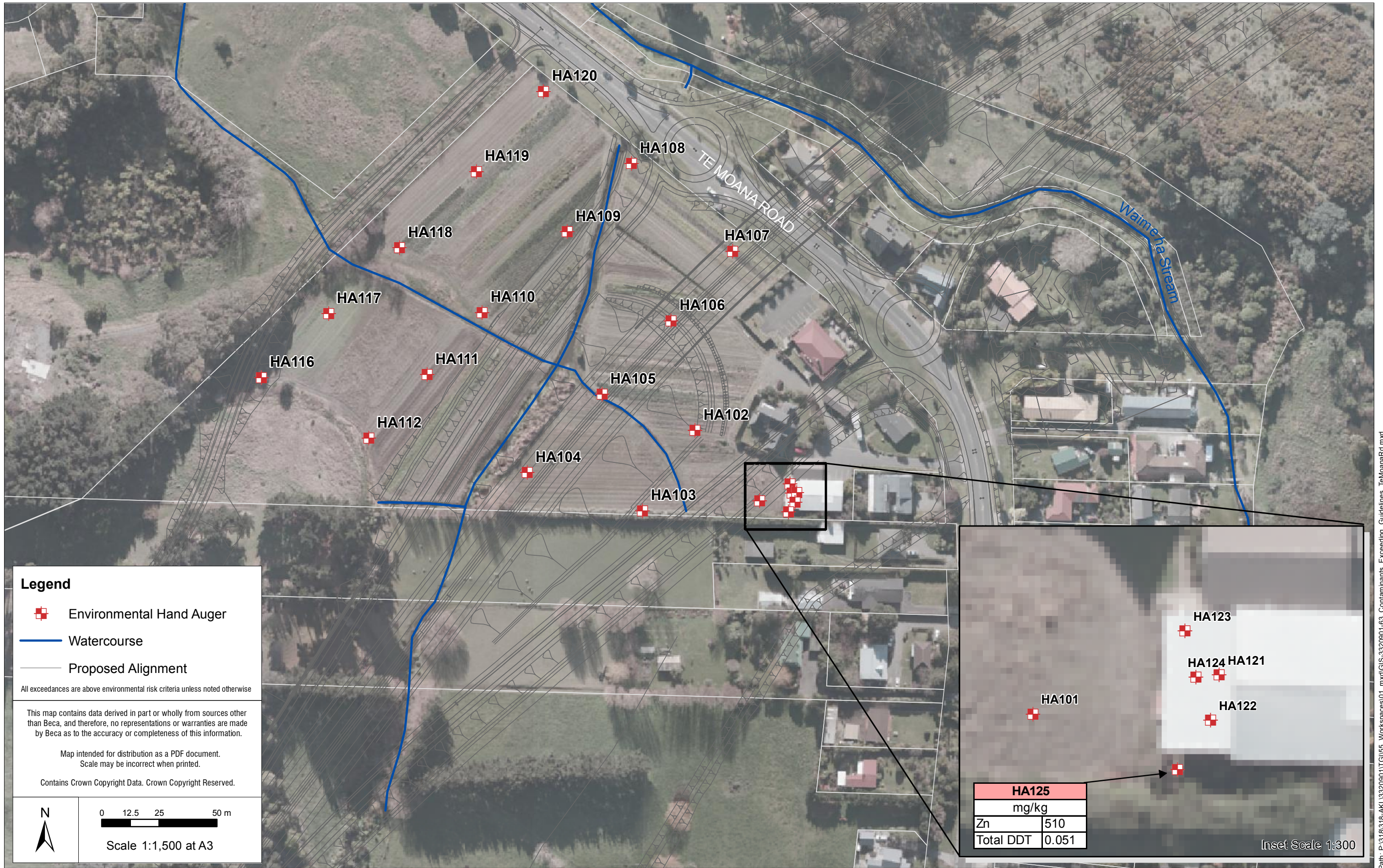
Revision	Amendment	Approved	Date
A		AH4	15/09/11



Project: <b>MACKAYS TO PEKA PEKA EXPRESSWAY</b>	
Title: Contaminants Exceeding Guideline Values Sector 2: 55 Rata Road	Status: Document ID: Drawing No: GIS-3320901-61
	Rev: A

Path: P:\318\318-AKL\3320901\TGI\55\_Workspaces\01\_mxd\GIS-3320901-61\_Contaminants\_Exceeding\_Guidelines\_RataRd.mxd





Notes:  
 Drawing No: M2PP-AEE-DWG-EN-CL-007


Revision	Amendment	Approved	Date
A		AH4	15/09/11




Project: <b>MACKAYS TO PEKA PEKA EXPRESSWAY</b>	
Title: Contaminants Exceeding Guideline Values Sector 3: 124-154 Te Moana Road	Status: Document ID: Drawing No: GIS-3320901-63
	Rev: A



**Legend**

 Areas Not Assessed

 Proposed Alignment

This map contains data derived in part or wholly from sources other than Beca, and therefore, no representations or warranties are made by Beca as to the accuracy or completeness of this information.

Map intended for distribution as a PDF document.  
Scale may be incorrect when printed.

Contains Crown Copyright Data. Crown Copyright Reserved.

N

0 25 50 100 m

Scale 1:3,000 at A3

Notes:  
Drawing No: M2PP-AEE-DWG-EN-CL-008



A		AH4	15/09/11
Revision	Amendment	Approved	Date



Project: <b>MACKAYS TO PEKA PEKA EXPRESSWAY</b>	
Title: <b>Areas Not Assessed Sector 3</b>	Status: Document ID: Drawing No: GIS-3320901-64
	Rev. A



**Legend**

-  Hydrogeological Boreholes
-  Proposed Alignment

This map contains data derived in part or wholly from sources other than Beca, and therefore, no representations or warranties are made by Beca as to the accuracy or completeness of this information.

Map intended for distribution as a PDF document.  
Scale may be incorrect when printed.

Contains Crown Copyright Data. Crown Copyright Reserved.

**N**

0 25 50 100  
Metres  
Scale 1:2,000 at A3

Notes:  
Drawing No: M2PP-AEE-DWG-EN-CL-003

A	Initial plotting of boreholes	AH4	18/11/11
Revision	Amendment	Approved	Date



Project: <b>MACKAYS TO PEKA PEKA EXPRESSWAY</b>	
Title: Contamination Assessment: Sector 3 Otaihanga Mountain Bike Park	
Status:	Rev.
Document ID:	
Drawing No:	A
GIS-3320901-67	

Path: P:\3181318-AKL\3320901\GIS\Workspaces\01\_mxd\GIS-3320901-51\_Contaminated\_land\_investigation\_sites\_RataRc.mxd