

ABOVE GROUND STORAGE AREA

OPEN CHANNEL TO WETLAND

ALTERNATIVE WETLAND 5 LOCATION AND/OR OUTLET LOCATION COMBINED WITH LAND OWNER'S WETLAND WITH THEIR AGREEMENT

REPLACE EXISTING KCDC DRAIN WITH NEW

WETLAND 5	
PURPOSE	= TREATMENT AND ATTENUATION
TOTAL AREA	= 6,000m ²
1% AEP VOLUME	= 6,234m ³
1% AEP WSL	= 7.7m
WQV	= 180m ³
- WETLAND AREA	= 900m ²
- UPPER IL	= 5.35m
- LOWER IL	= 5.2m
- PERMANENT WSL	= 5.5m
- REC WC WSL	≈ 4.5m
- NEW GL	= 6.74m

CULVERT- 13
DIM= 7500
LENGTH= 30m

CULVERT- 14
DIM= 5 X 3m
LENGTH= 111m

CATCHMENT CULVERT 14
AREA = 378.83 ha

- NOTES:
- REFER DRAWING CV-SW-100 FOR INDEX SHEET AND STORMWATER LEGEND
 - EXISTING DRAINAGE FROM KCDC GIS, GWRC GIS, NZTA RECORDS AND KIWI RAIL RECORDS.
 - GL = GROUND LEVEL
WQV = WATER QUALITY VOLUME
WSL = WATER SURFACE LEVEL
IL = INVERT LEVEL
REC WC WSL = RECEIVING WATER COURSE WATER SURFACE LEVEL.

Original Scale (A3)
1:2000

1	AEE LODGEMENT	NRN	15.03.12
Revision:	Amendment	Approved:	Date:



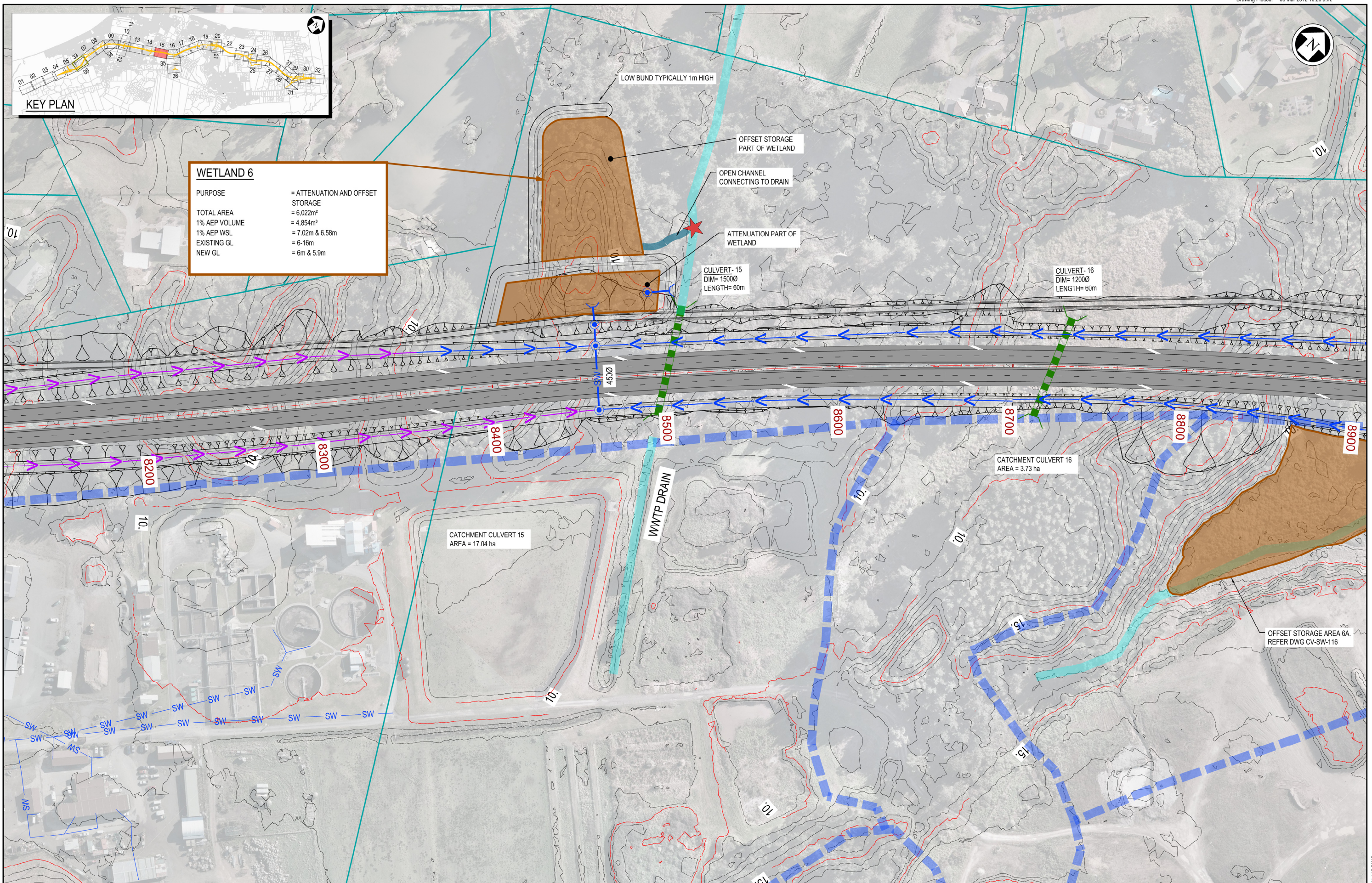
Project: **MACKAYS TO PEKA PEKA EXPRESSWAY**

Title: **DRAINAGE LAYOUT SHEET 14 OF 37**

Status: FOR CONSENTING

Document ID: M2PP-AEE-DWG Rev: 1

Drawing No: **CV-SW-114**



WETLAND 6

PURPOSE	= ATTENUATION AND OFFSET STORAGE
TOTAL AREA	= 6,022m ²
1% AEP VOLUME	= 4,854m ³
1% AEP WSL	= 7.02m & 6.58m
EXISTING GL	= 6-16m
NEW GL	= 6m & 5.9m

NOTES:

- REFER DRAWING CV-SW-100 FOR INDEX SHEET AND STORMWATER LEGEND
- EXISTING DRAINAGE FROM KCDC GIS, GWRC GIS, NZTA RECORDS AND KIWI RAIL RECORDS.
- GL = GROUND LEVEL
WQV = WATER QUALITY VOLUME
WSL = WATER SURFACE LEVEL
IL = INVERT LEVEL
REC WC WSL = RECEIVING WATER COURSE WATER SURFACE LEVEL.

Original Scale (A3)
1:2000

1	AEE LODGEMENT	NRN	15.03.12
Revision:	Amendment	Approved:	Date:



Project: **MACKAYS TO PEKA PEKA EXPRESSWAY**

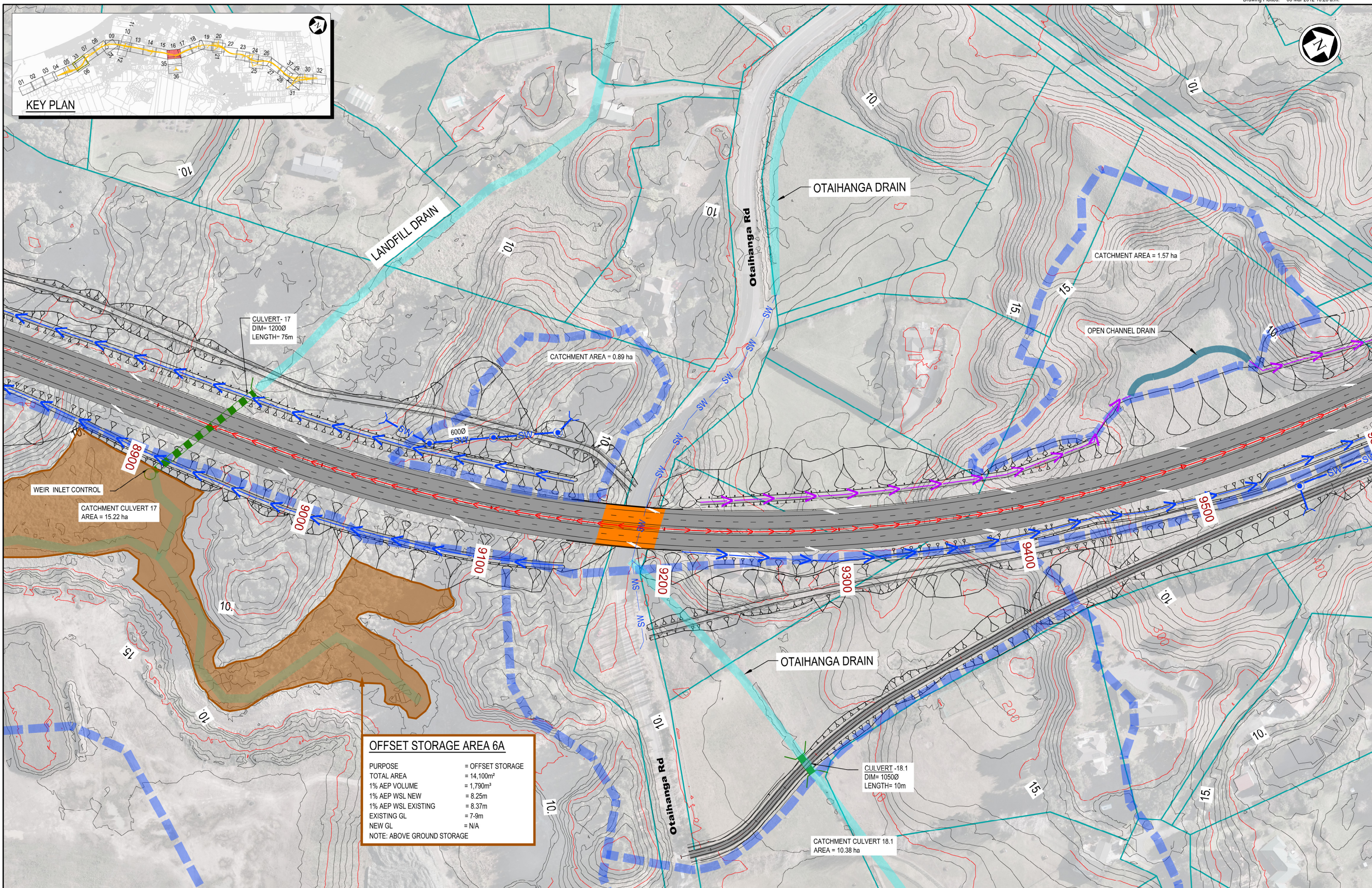
Title: **DRAINAGE LAYOUT SHEET 15 OF 37**

Status: FOR CONSENTING

Document ID: M2PP-AEE-DWG

Drawing No: **CV-SW-115**

Rev: 1



OFFSET STORAGE AREA 6A	
PURPOSE	= OFFSET STORAGE
TOTAL AREA	= 14,100m ²
1% AEP VOLUME	= 1,790m ³
1% AEP WSL NEW	= 8.25m
1% AEP WSL EXISTING	= 8.37m
EXISTING GL	= 7.9m
NEW GL	= N/A
NOTE: ABOVE GROUND STORAGE	

- NOTES:
- REFER DRAWING CV-SW-100 FOR INDEX SHEET AND STORMWATER LEGEND
 - EXISTING DRAINAGE FROM KCDC GIS, GWRC GIS, NZTA RECORDS AND KIWI RAIL RECORDS.
 - GL = GROUND LEVEL
WQV = WATER QUALITY VOLUME
WSL = WATER SURFACE LEVEL
IL = INVERT LEVEL
REC WC WSL = RECEIVING WATER COURSE WATER SURFACE LEVEL.

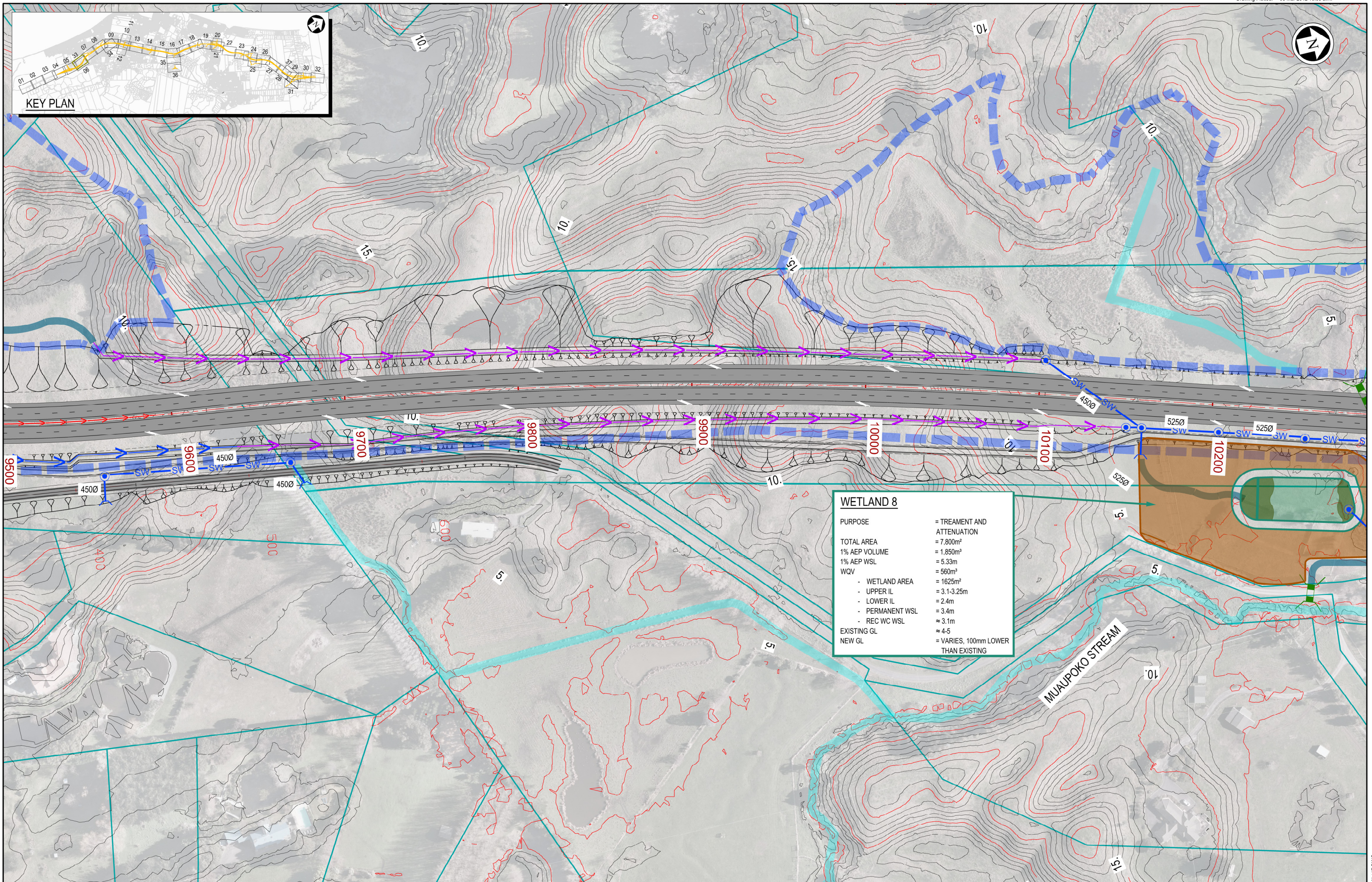
Original Scale (A3)
1:2000

1	AEE LODGEMENT	NRN	15.03.12
Revision:	Amendment	Approved:	Date:



Project: **MACKAYS TO PEKA PEKA EXPRESSWAY**

Title: DRAINAGE LAOUT SHEET 16 OF 37		Status: FOR CONSENTING
Document ID: M2PP-AEE-DWG	Rev:	
Drawing No: CV-SW-116		1



WETLAND 8	
PURPOSE	= TREATMENT AND ATTENUATION
TOTAL AREA	= 7,800m ²
1% AEP VOLUME	= 1,850m ³
1% AEP WSL	= 5.33m
WQV	= 560m ³
- WETLAND AREA	= 1625m ²
- UPPER IL	= 3.1-3.25m
- LOWER IL	= 2.4m
- PERMANENT WSL	= 3.4m
- REC WC WSL	= 3.1m
EXISTING GL	= 4.5
NEW GL	= VARIES, 100mm LOWER THAN EXISTING

NOTES:

- REFER DRAWING CV-SW-100 FOR INDEX SHEET AND STORMWATER LEGEND
- EXISTING DRAINAGE FROM KCDC GIS, GWRC GIS, NZTA RECORDS AND KIWI RAIL RECORDS.
- GL = GROUND LEVEL
WQV = WATER QUALITY VOLUME
WSL = WATER SURFACE LEVEL
IL = INVERT LEVEL
REC WC WSL = RECEIVING WATER COURSE WATER SURFACE LEVEL.

Original Scale (A3)		1:2000	
1	AEE LODGEMENT	NRN	15.03.12
Revision:	Amendment	Approved:	Date:



Project: **MACKAYS TO PEKA PEKA EXPRESSWAY**

Title: **DRAINAGE LAYOUT SHEET 17 OF 37**

Status: **FOR CONSENTING**

Document ID: M2PP-AEE-DWG
Drawing No: **CV-SW-117**

Rev: 1